

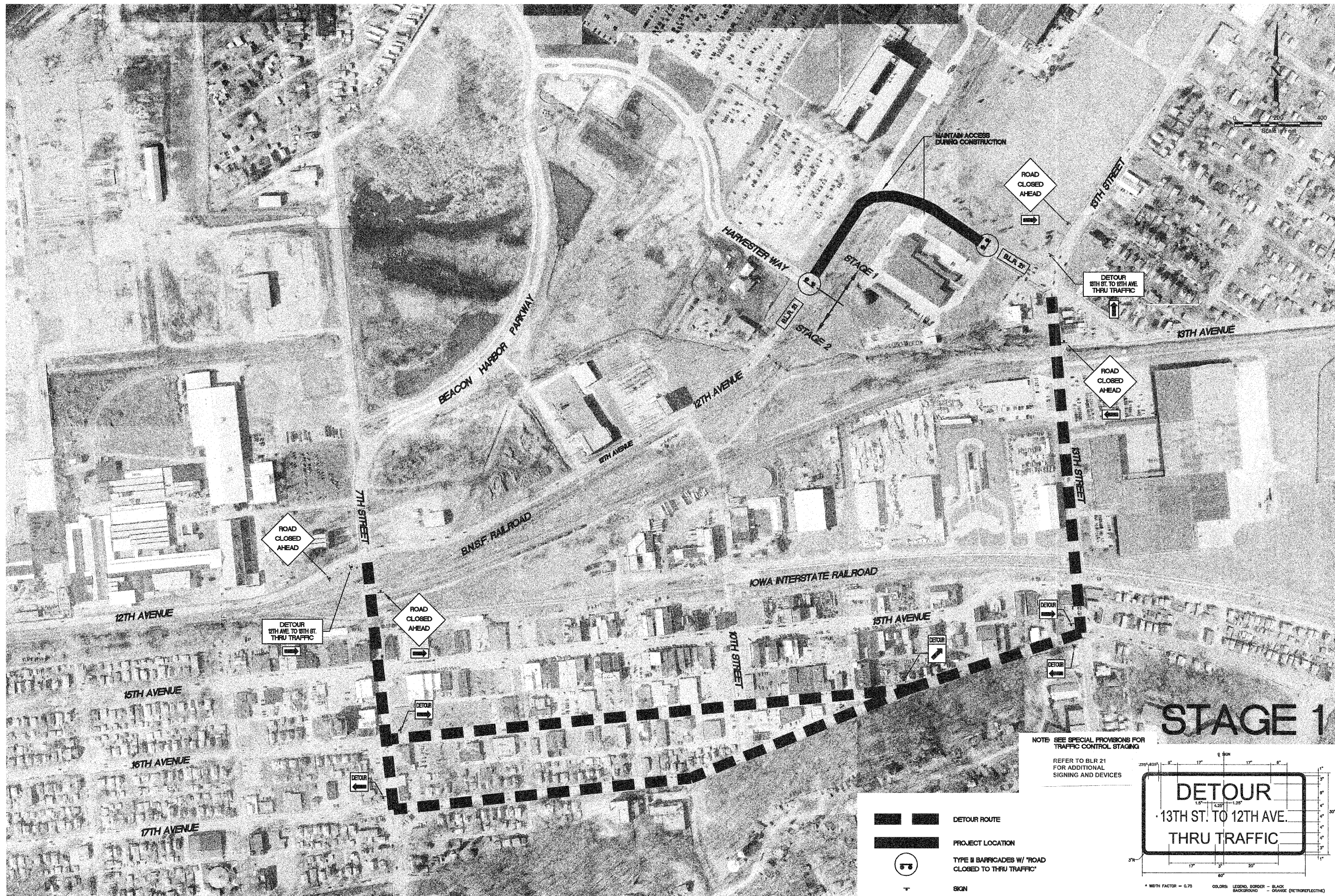
REVISIONS



12th Avenue Resurfacing Project  
7th Street to 13th Street  
Traffic Control and Detour Plan

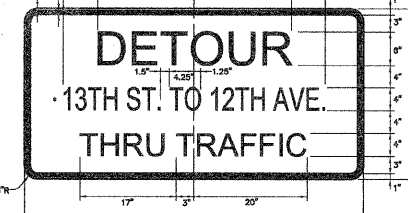
Sheet No.

5



- DETOUR ROUTE
- PROJECT LOCATION
- TYPE II BARRICADES W/ 'ROAD CLOSED TO THRU TRAFFIC'
- SIGN

NOTE: SEE SPECIAL PROVISIONS FOR TRAFFIC CONTROL STAGING  
REFER TO BLR 21 FOR ADDITIONAL SIGNING AND DEVICES



SIGN LAYOUT DETAIL