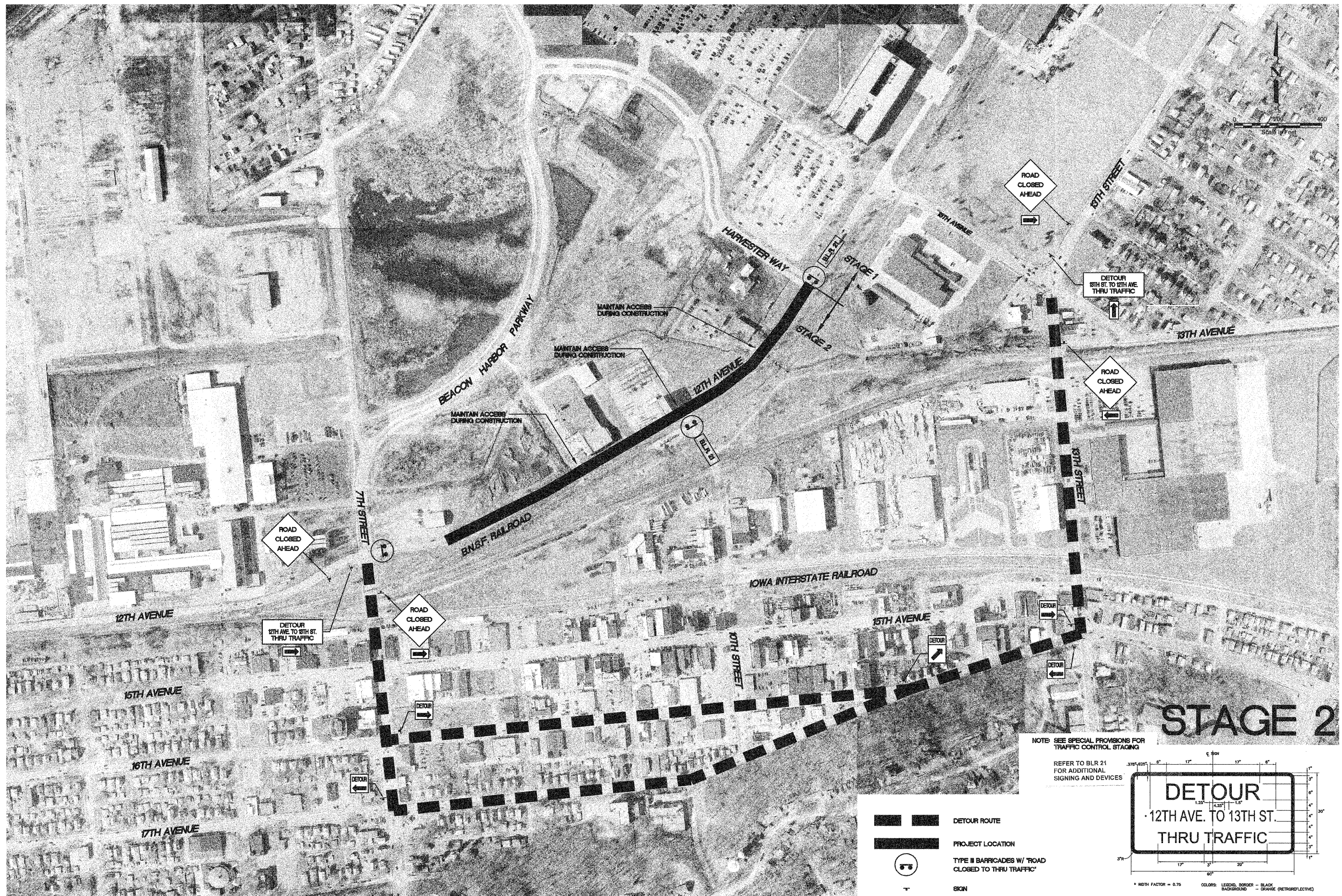






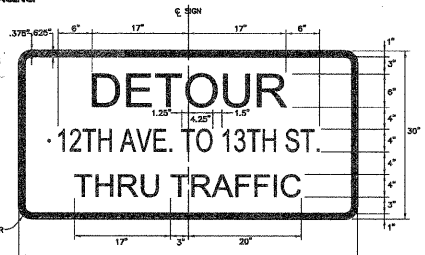
REVISIONS



NOTE: SEE SPECIAL PROVISIONS FOR TRAFFIC CONTROL STAGING

REFER TO BLR 21 FOR ADDITIONAL SIGNING AND DEVICES

-  DETOUR ROUTE
-  PROJECT LOCATION
-  TYPE II BARRICADES W/ "ROAD CLOSED TO THRU TRAFFIC"
-  SIGN



SIGN LAYOUT DETAIL