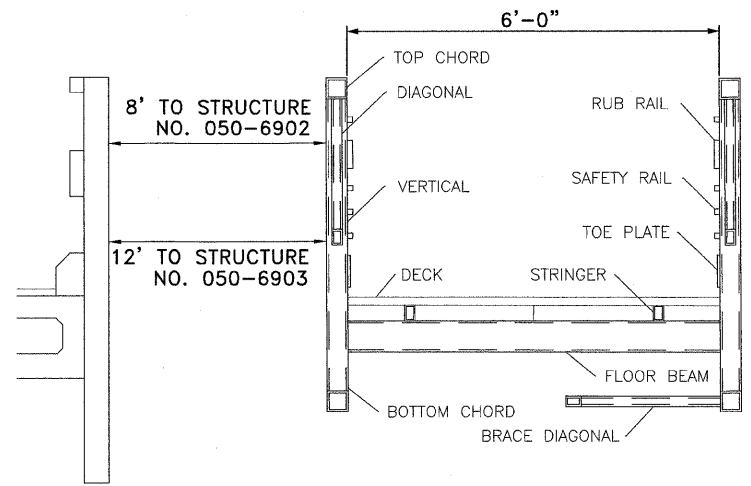


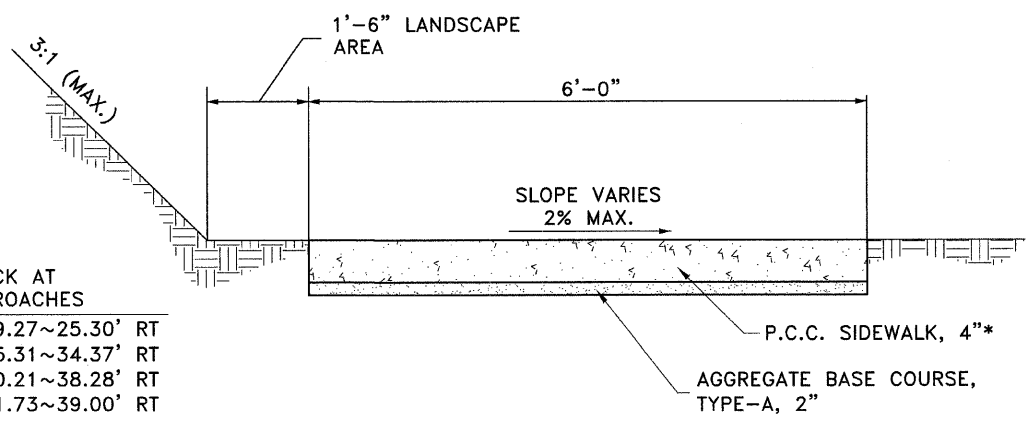
**F.A.S. 268 - MAIN STREET**  
**SECTION 06-00173-00-SW**  
**CITY OF MARSEILLES, LASALLE COUNTY**



**TYPICAL PEDESTRIAN TRUSS SUPERSTRUCTURE SECTION**  
 STA 16+70.32~25.38' RT TO STA 17+75.16~33.02' RT  
 AND  
 STA 19+41.29~38.33' RT TO STA. 20+49.29~38.88' RT

**BORING LOG #1**  
 STA 17+40.19 ~ 23.32' LT.  
 ELEVATION = 487.3

DEPTH (FEET)	DESCRIPTION OF MATERIALS	TEST NO.	WATER CONTENT (%)	LIQUID LIMIT (PL)	PLASTICITY INDEX (PI)	GROUP SYMBOL	REMARKS
0-1	Medium Brown Fine to Coarse Sand	1	55	6	1	SW	
1-4	Loose Brown Fine to Coarse Sand	2	55	6	1	SW	
4-11	Medium Brown and Black Sandy Loam To Silt	3	55	9	1	SM	
11-12	Medium Brown and Black Sandy Loam To Silt	4	55	9	1	SM	
12-13	Medium Brown and Black Sandy Loam To Silt	5	55	9	1	SM	
13-14	Medium Brown and Black Sandy Loam To Silt	6	55	9	1	SM	
14-15	Medium Brown and Black Sandy Loam To Silt	7	55	9	1	SM	
15-16	Medium Brown and Black Sandy Loam To Silt	8	55	9	1	SM	
16-17	Medium Brown and Black Sandy Loam To Silt	9	55	9	1	SM	
17-18	Medium Brown and Black Sandy Loam To Silt	10	55	9	1	SM	
18-19	Medium Brown and Black Sandy Loam To Silt	11	55	9	1	SM	
19-20	Medium Brown and Black Sandy Loam To Silt	12	55	9	1	SM	



\*SIDEWALK SHALL BE 5" THICK AT ALL PEDESTRIAN BRIDGE APPROACHES

STA 16+59.67~24.52' RT TO STA 16+69.27~25.30' RT  
 STA 17+76.16~33.09' RT TO STA 17+95.31~34.37' RT  
 STA 19+30.89~36.82' RT TO STA 19+40.21~38.28' RT  
 STA 20+50.38~38.89' RT TO STA 20+71.73~39.00' RT

**TYPICAL SIDEWALK SECTION**

**BORING LOG #2**  
 STA 16+70.94 ~ 29.00' RT.  
 ELEVATION = 487.4

DEPTH (FEET)	DESCRIPTION OF MATERIALS	TEST NO.	WATER CONTENT (%)	LIQUID LIMIT (PL)	PLASTICITY INDEX (PI)	GROUP SYMBOL	REMARKS
0-1	Loose Brown Fine to Coarse Sand	1	55	6	1	SW	
1-4	Loose Brown Fine to Coarse Sand	2	55	6	1	SW	
4-11	Medium Brown Fine Coarse Sand With Lenticular Fragments	3	55	6	1	SW	
11-12	Medium Brown Fine Coarse Sand With Lenticular Fragments	4	55	6	1	SW	
12-13	Loose Brown and Black Sand	5	55	6	1	SW	
13-14	Loose Brown and Black Sand	6	55	6	1	SW	
14-15	Loose Brown and Black Sand	7	55	6	1	SW	
15-16	Loose Brown and Black Sand	8	55	6	1	SW	
16-17	Loose Brown and Black Sand	9	55	6	1	SW	
17-18	Loose Brown and Black Sand	10	55	6	1	SW	
18-19	Loose Brown and Black Sand	11	55	6	1	SW	
19-20	Loose Brown and Black Sand	12	55	6	1	SW	

1304 GEMINI CIRCLE  
 OTTAWA, IL 61350-1692  
 TEL: 815-434-9025  
 FAX: 815-434-9023

**ETSCHEID DUTTLINGER & ASSOCIATES**  
 Professional Engineers & Land Surveyors

PROFESSIONAL DESIGN FIRM # 184-000711  
 DATE PLOTTED: OCTOBER 21, 2009  
 DRAWN BY: A.R.G.  
 CHECKED BY:  
 PROJECT NUMBER: 2057.92  
 DRAWING FILE: 205792\_NOTES  
**SHEET NO. 3 OF 15**