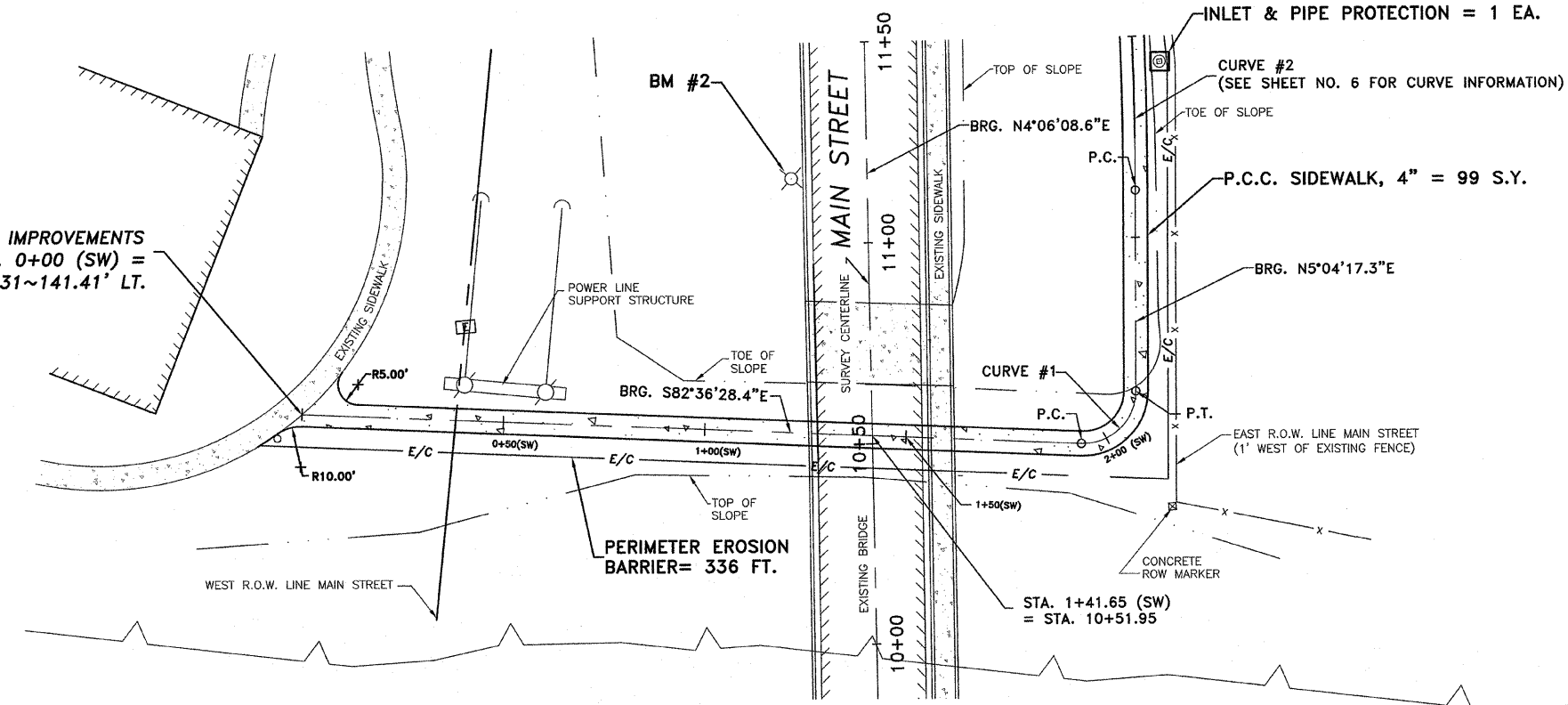


SEE SHEET NO. 6

F.A.S. ROUTE NO.	SECTION	ILLINOIS PROJECT NO.	CONTRACT NO.	COUNTY	TOTAL SHEETS	SHEET NUMBER
268	06-00173-00-SW		87359	LASALLE	15	5

BEGIN SIDEWALK IMPROVEMENTS
STA. 0+00 (SW) =
STA. 10+60.31~141.41' LT.



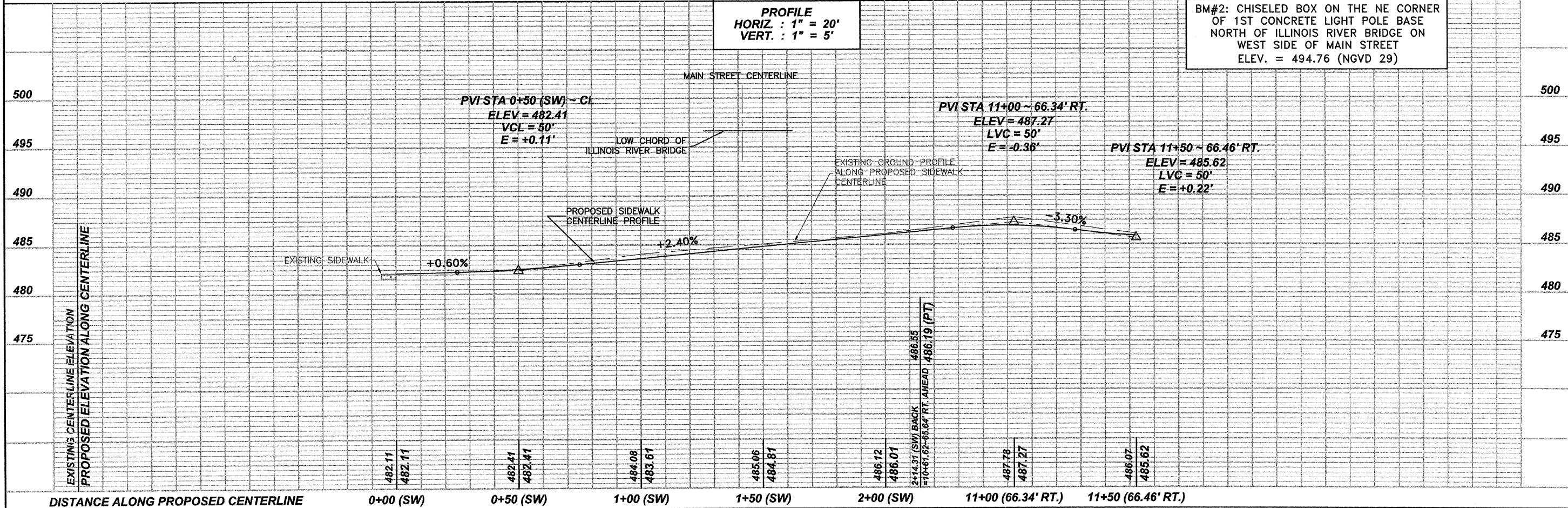
CURVE #1 DATA
P.C. STA. 1+93.37 (SW)
P.T. STA. 2+14.31 (SW)
P.I. STA. 2+06.94 (SW)
D = 92°19'14"
R = 13.00'
L = 20.95'
T = 13.54'
L.C. = 18.75'
CH. BRG. = N51°13'54.45"E

ILLINOIS RIVER
NWL = 467±
BFE = 481.5

(SW) INDICATES STATIONING ALONG THE
CENTERLINE OF THE PROPOSED SIDEWALK

SCALES
PLAN
HORIZ. : 1" = 20'
PROFILE
HORIZ. : 1" = 20'
VERT. : 1" = 5'

BM#2: CHISELED BOX ON THE NE CORNER
OF 1ST CONCRETE LIGHT POLE BASE
NORTH OF ILLINOIS RIVER BRIDGE ON
WEST SIDE OF MAIN STREET
ELEV. = 494.76 (NGVD 29)



13M GEMINI CIRCLE
OTTAWA, IL 61854-3925
TEL: 815-834-3925
FAX: 815-834-3933

E TSCHIED
DUTTLINGER
& ASSOCIATES INC.
Professional Engineers & Land Surveyors

PROFESSIONAL DESIGN
FIRM # 184-000711
DATE PLOTTED:
OCTOBER 21, 2009
DRAWN BY:
R.M.S.
CHECKED BY:
PROJECT NUMBER:
2057.92
DRAWING FILE:
J:\205792_BASE2.DWG
SHEET NO.

5 OF 15

SIDEWALK IMPROVEMENTS ~ 0+00 (SW) TO 11+50