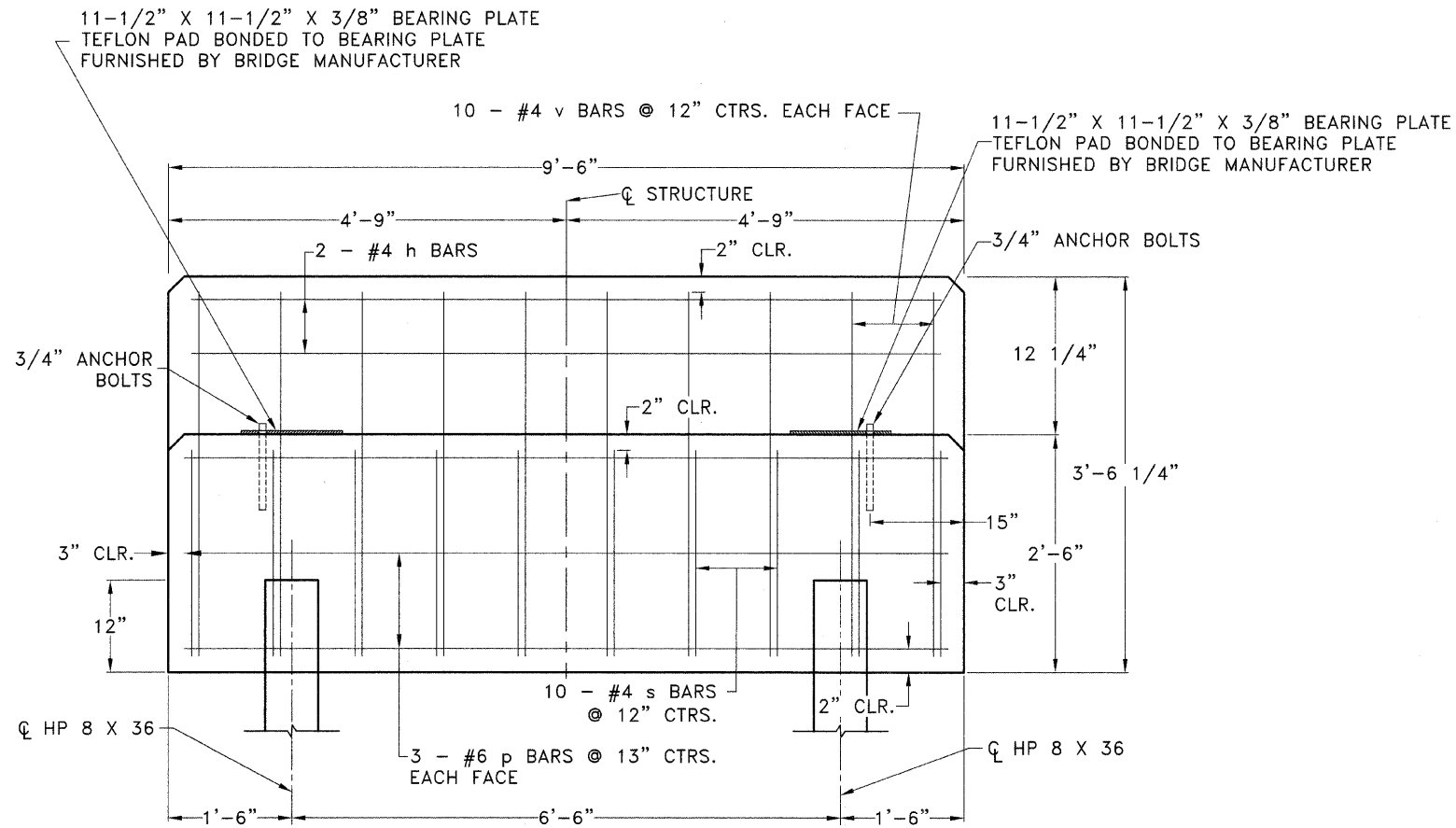


F.A.S. ROUTE NO.	SECTION	ILLINOIS PROJECT	CONTRACT NO.	COUNTY	TOTAL SHEETS	SHEET NUMBER
268	06-00173-00-SW	TE-0003(58)	87359	LASALLE	15	10

F.A.S. 268 - MAIN STREET
SECTION 06-00173-00-SW
CITY OF MARSEILLES, LASALLE COUNTY



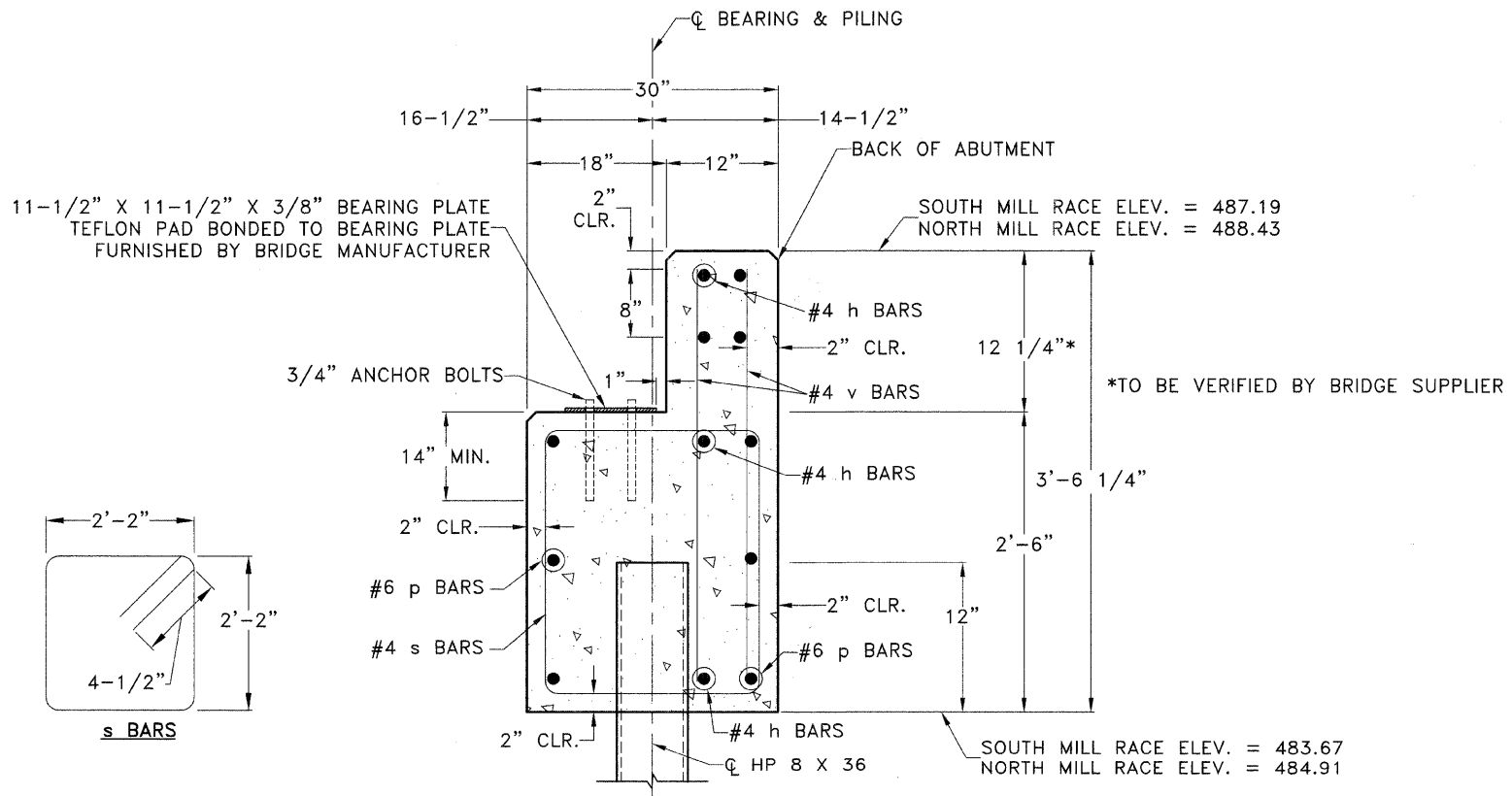
ABUTMENT - FRONT ELEVATION DETAIL
NOT TO SCALE

DESIGN STRESSES
 $f'_c = 50$ KSI (CONCRETE)
 $F_y = 60,000$ PSI (REINFORCEMENT)

SOUTH MILL RACE PILE DATA
NORTH ABUTMENT
 TYPE: HP 8X36
 CAPACITY: EAST PILING DRIVEN TO TOP OF EX. WING WALL FOOTING
 WEST PILING DRIVEN TO TOP OF BEDROCK
 ESTIMATED LENGTH: EAST=21' WEST=19'
 NUMBER REQUIRED: 2

SOUTH ABUTMENT
 TYPE: HP 8X36
 CAPACITY: PILING DRIVEN TO TOP OF EX. WINGWALL FOOTING
 ESTIMATED LENGTH: 19'
 NUMBER REQUIRED: 2

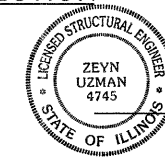
NORTH MILL RACE PILE DATA
EACH ABUTMENT
 TYPE: HP 8X36
 CAPACITY: PILING DRIVEN TO TOP OF BEDROCK
 ESTIMATED LENGTH: 20'
 TOTAL NUMBER REQUIRED: 2



ABUTMENT - CROSS SECTION
NOT TO SCALE

BILL OF MATERIAL				
EACH ABUTMENT - 4 REQUIRED				
BAR	NO.	SIZE	LENGTH	SHAPE
h	6	#4	9'-2"	—
p	6	#6	9'-0"	—
s	10	#4	9'-5"	□
v	20	#4	3'-4"	—
CONCRETE STRUCTURES			C.Y.	2.6
REINFORCEMENT BARS			POUND	230
FURNISHING HP 8X36 PILES			FOOT	*
DRIVING PILES			FOOT	*

*SEE PILE DATA TABLES FOR LENGTHS



DATE: 12/5/09
 ZEYN B. UZMAN
 S.E. NO. 081-004745
 EXPIRES NOVEMBER 30, 2010

1304 GEMINI CIRCLE
 OTTAWA, IL 61350-1692
 TEL: 815-484-9025
 FAX: 815-484-9033

ETSCHIED DUTTLINGER & ASSOCIATES INC.
 Professional Engineers & Land Surveyors

PROFESSIONAL DESIGN
 FIRM # 184-000711
 DATE PLOTTED:
 OCTOBER 21, 2009
 DRAWN BY:
 R.M.S.
 CHECKED BY:
 PROJECT NUMBER:
 2057.92
 DRAWING FILE:
 J:\205792_ABUT.DWG

SHEET NO.
10 OF 15