

ROUTE NO.	SECTION	COUNTY	TOTAL SHEETS	SHEET NO.
F.A.S. 287	05-00039-03-BR	GRUNDY	33	4
FED. ROAD DIST. NO. 7	ILLINOIS	FED. AID PROJECT-		

Contract #87376

CURVE DATA
 Δ = 21'-02'
 D = 4'-12"
 R = 1364.69'
 T = 253.30'
 L = 500.79'
 E = 23.32'
 P.C. STA. 128+75.30
 P.I. STA. 131+28.60
 P.T. STA. 133+76.09
 S.E. = 0.038 FT./FT. ATTAINED IN 150'
 STA. 127+75 TO STA. 129+25
 AND STA. 133+01 TO STA. 134+51



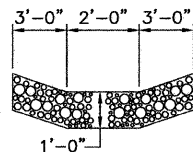
SCALE IN FEET

LEGEND

- SET IRON PIN
- △ SET MAG NAIL
- MANHOLE
- ⊠ ROW MARKER
- ⊙ FENCE POST
- ⊕ POWER POLE
- ⊥ SIGN
- GUY WIRE
- STREAM
- GUARD RAIL
- FENCE
- EDGE OF TIMBER
- 4" GAS MAIN
- BURIED TELEPHONE LINE

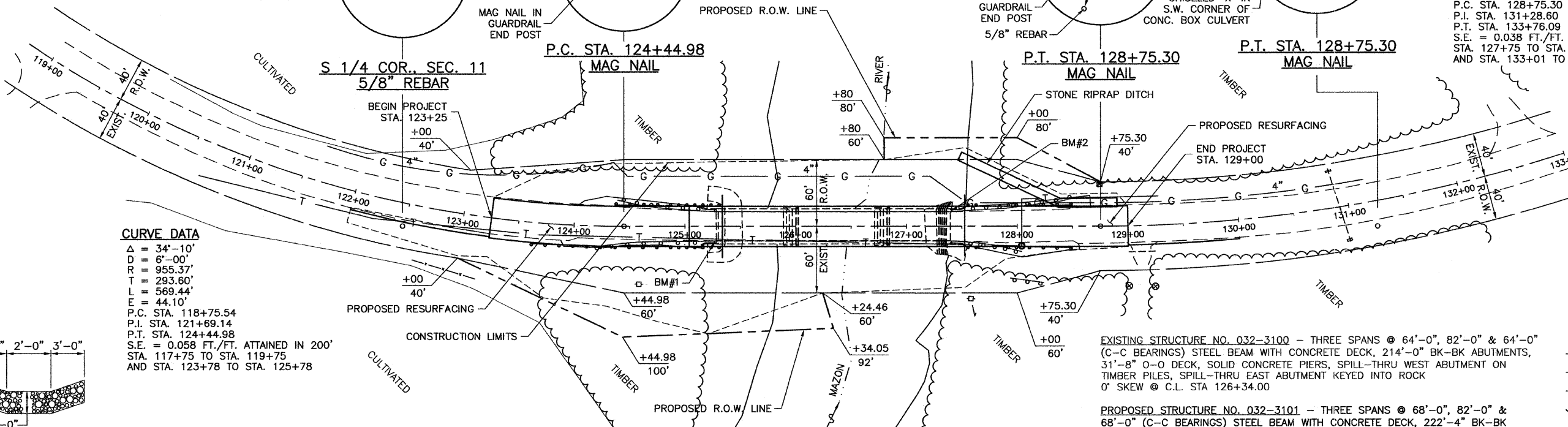
CURVE DATA

Δ = 34'-10'
 D = 6'-00"
 R = 955.37'
 T = 293.60'
 L = 569.44'
 E = 44.10'
 P.C. STA. 118+75.54
 P.I. STA. 121+69.14
 P.T. STA. 124+44.98
 S.E. = 0.058 FT./FT. ATTAINED IN 200'
 STA. 117+75 TO STA. 119+75
 AND STA. 123+78 TO STA. 125+78



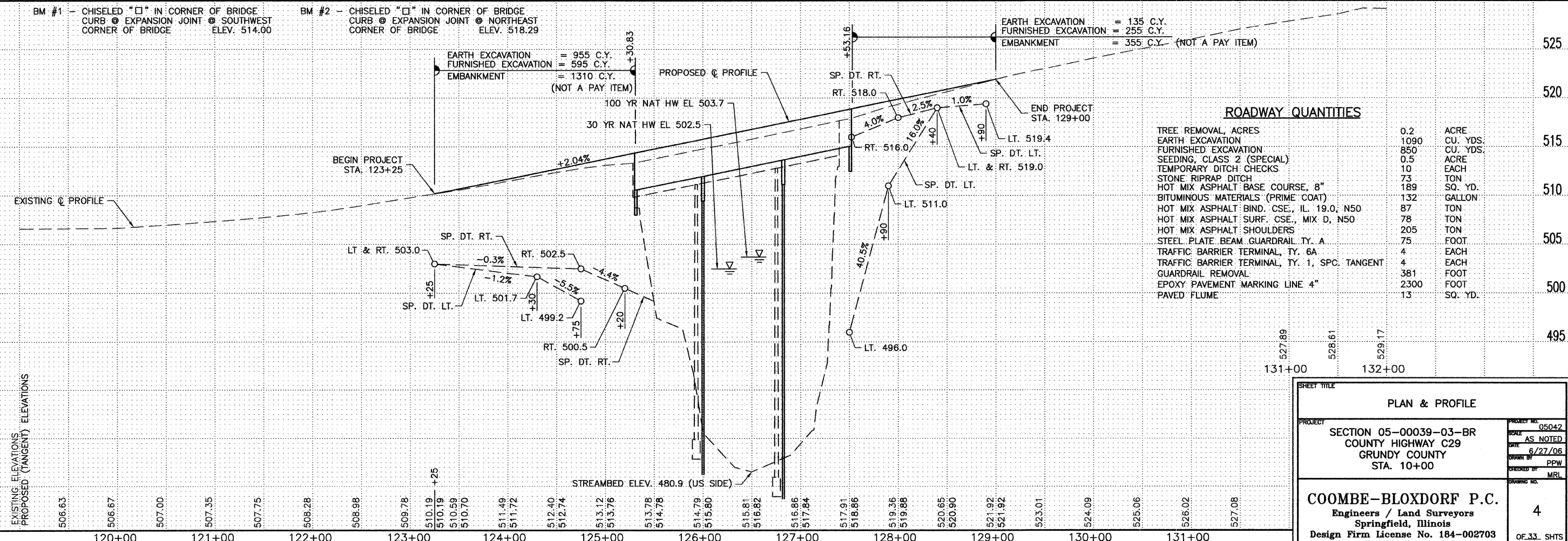
STONE RIPRAP DITCH

LT. STA. 127+50 TO 128+90
 ESTIMATED QUANTITY = 73 TON



EXISTING STRUCTURE NO. 032-3100 - THREE SPANS @ 64'-0", 82'-0" & 64'-0" (C-C BEARINGS) STEEL BEAM WITH CONCRETE DECK, 214'-0" BK-BK ABUTMENTS, 31'-8" O-O DECK, SOLID CONCRETE PIERS, SPILL-THRU WEST ABUTMENT ON TIMBER PILES, SPILL-THRU EAST ABUTMENT KEYED INTO ROCK 0' SKEW @ C.L. STA 126+34.00

PROPOSED STRUCTURE NO. 032-3101 - THREE SPANS @ 68'-0", 82'-0" & 68'-0" (C-C BEARINGS) STEEL BEAM WITH CONCRETE DECK, 222'-4" BK-BK ABUTMENTS, 36'-0" CL ROADWAY ON PROPOSED SOLID CONCRETE WALL ENCASED H-PILE PIERS, PROPOSED SEMI-INTEGRAL WEST ABUTMENT ON PILES, PROPOSED SEMI-INTEGRAL EAST ABUTMENT KEYED INTO ROCK 0' SKEW @ C.L. STA 126+42.00



ROADWAY QUANTITIES

TREE REMOVAL, ACRES	0.2	ACRE
EARTH EXCAVATION	1090	CU. YDS.
FURNISHED EXCAVATION	850	CU. YDS.
SEEDING, CLASS 2 (SPECIAL)	0.5	ACRE
TEMPORARY DITCH CHECKS	10	EACH
STONE RIPRAP DITCH	73	TON
HOT MIX ASPHALT BASE COURSE, 8"	189	SQ. YD.
BITUMINOUS MATERIALS (PRIME COAT)	132	GALLON
HOT MIX ASPHALT BIND. CSE., IL. 19.0, N50	87	TON
HOT MIX ASPHALT SURF. CSE., MIX D, N50	78	TON
HOT MIX ASPHALT SHOULDERS	205	TON
STEEL PLATE BEAM GUARDRAIL TY. A	75	FOOT
TRAFFIC BARRIER TERMINAL, TY. 6A	4	EACH
TRAFFIC BARRIER TERMINAL, TY. 1, SPC. TANGENT	4	EACH
GUARDRAIL REMOVAL	381	FOOT
EPOXY PAVEMENT MARKING LINE 4"	2300	FOOT
PAVED FLUME	13	SQ. YD.

SHEET TITLE

PLAN & PROFILE

PROJECT: SECTION 05-00039-03-BR
 COUNTY HIGHWAY C29
 GRUNDY COUNTY
 STA. 10+00

PROJECT NO. 05042
 SCALE AS NOTED
 DATE 6/27/06
 DRAWN BY PFW
 CHECKED BY MRL
 DRAWING NO. 4

COOMBE-BLOXDORF P.C.
 Engineers / Land Surveyors
 Springfield, Illinois
 Design Firm License No. 184-002703

OF 33 SHTS