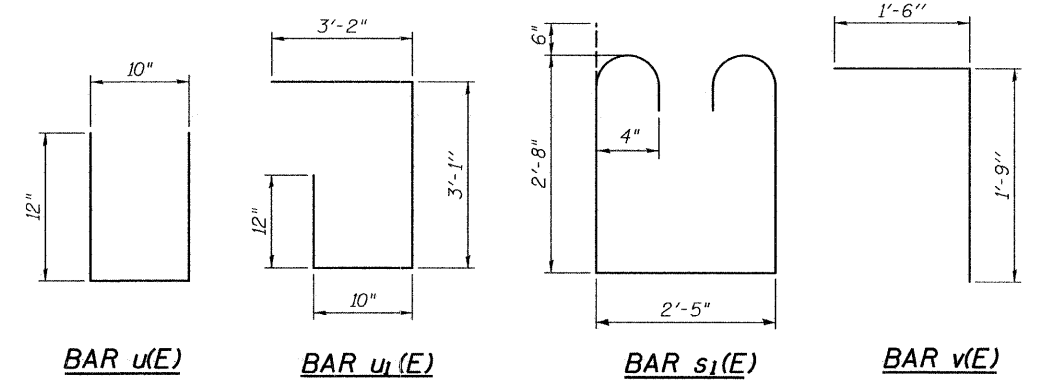
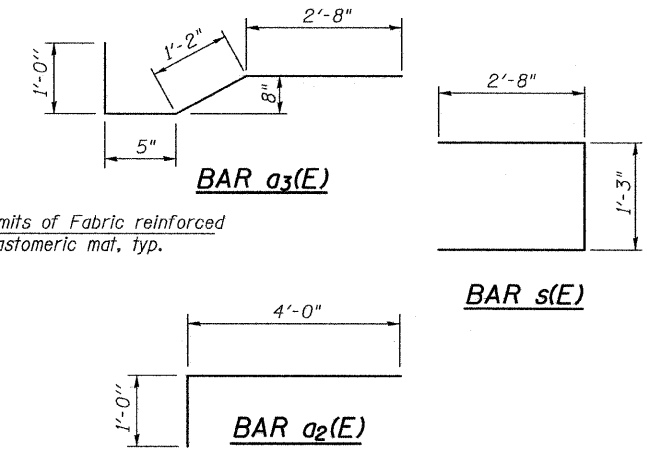
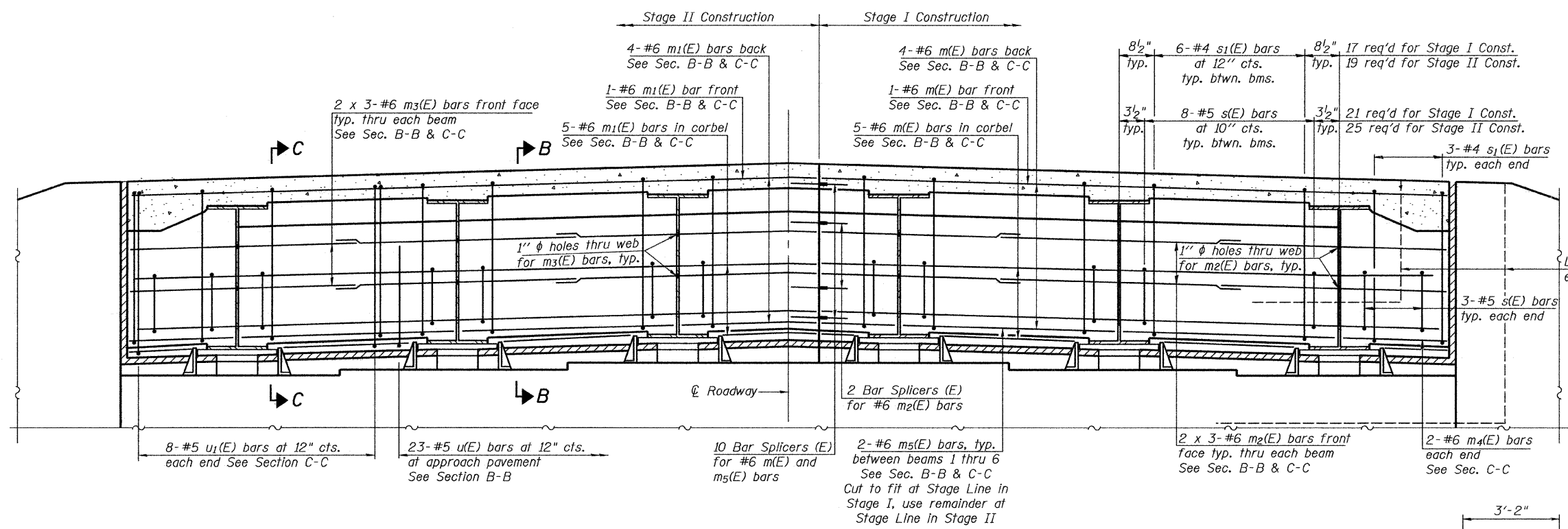
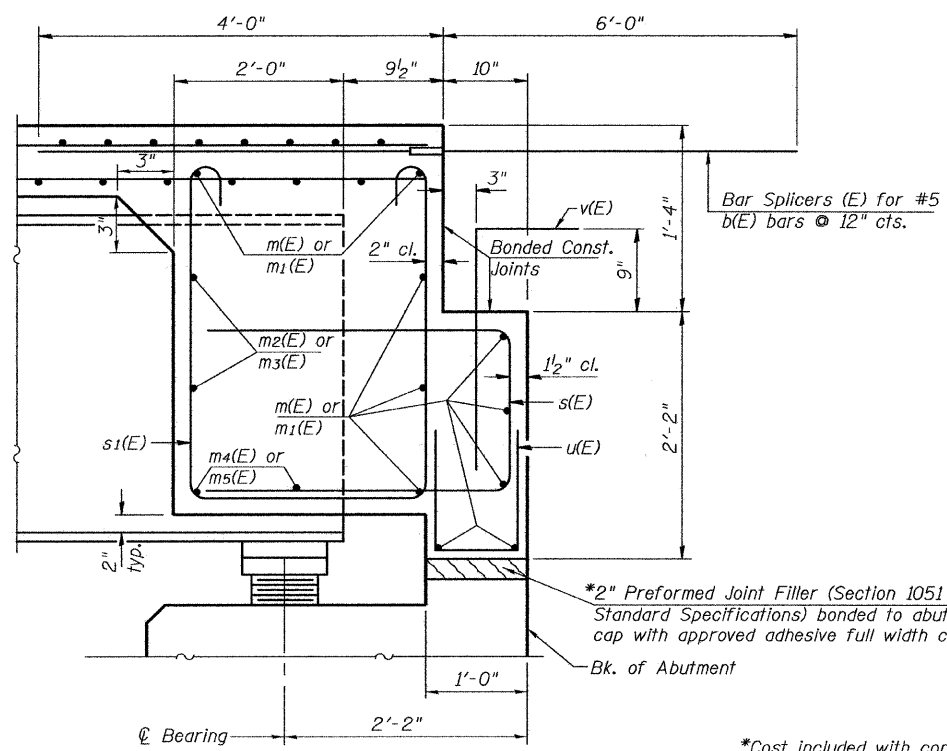


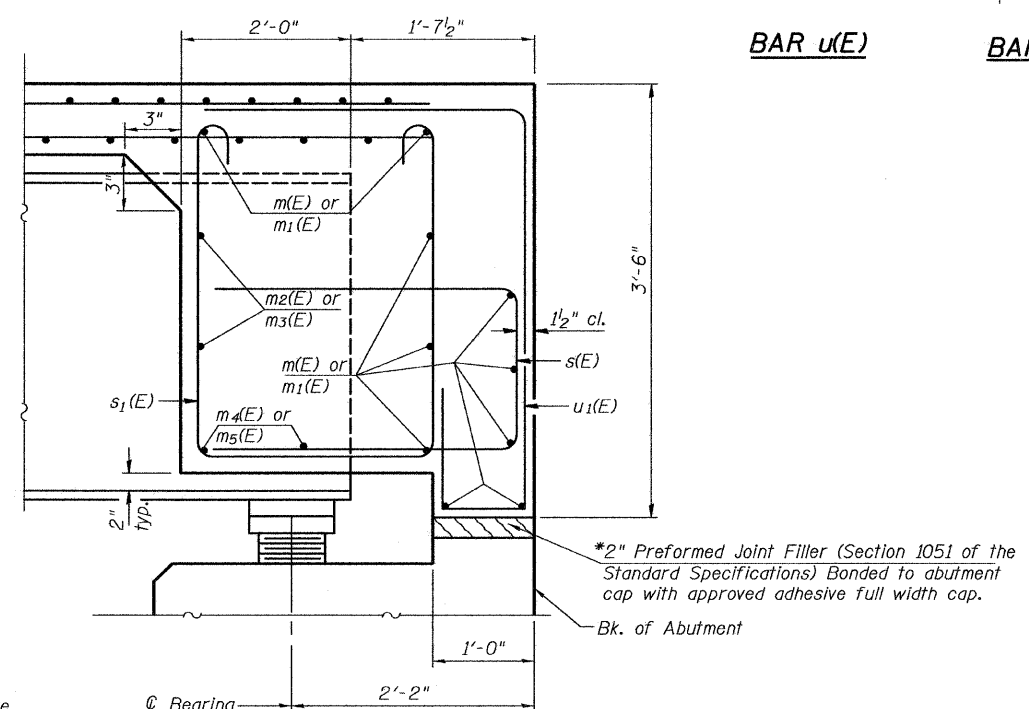
ROUTE NO.	SECTION	COUNTY	STATE	SHEET	SHEET NO. 13 25 SHEETS
F.A.S. 287	#	GRUNDY	33	18	
FED. ROAD DIST. NO. 7		ILLINOIS		FED. AID PROJECT-	
Contract #87376 *05-00039-03-BR					



DIAPHRAGM ELEVATION AT EAST ABUTMENT
Looking East



SECTION B-B
within approach pavement limits



SECTION C-C
beyond approach pavement limits

NOTES

- Reinforcement bars in diaphragm are billed with superstructure on sheet 12 of 25.
- Concrete in diaphragms is included with Concrete Superstructure on sheet 12 of 25.
- Bars indicated thus 1 x 2-#5 etc. indicates 1 line of bars with 2 lengths per line.
- See sheet 22 of 25 for bar splicer details.
- Provide utility conduit thru diaphragm and hanger locations similar to existing conditions. Coordinate with utility Engineer.

ILLINOIS DEPARTMENT OF TRANSPORTATION	
SHEET TITLE SUPERSTRUCTURE DETAILS	
PROJECT F.A.S. RT. 287 (C.H. 29) SECTION 05-00039-03-BR GRUNDY COUNTY STATION 126+42.00 STRUCTURE NO. 032-3101	PROJECT NO. 05042 SCALE DATE 10/21/09 DRAWN BY TFG CHECKED BY CME/MCB DRAWING NO.
COOMBE-BLOXDORF P.C. Engineers / Land Surveyors Springfield, Illinois Design Firm License No. 184-002703	13 OF 25 SHTS

MIN. BAR LAP
#6 bar = 2'-9"

PLOT DATE = 10/21/09
FILE NAME = \\sbs\p1000-plot\p1000-13.dgn
PLOT SCALE = 0.1000 1/16"
USER NAME = CFC