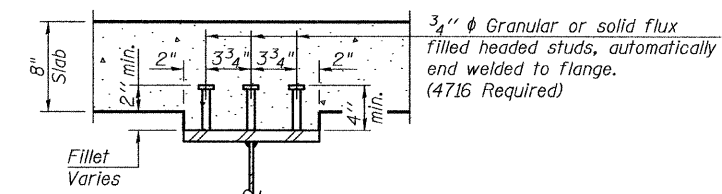


PLAN



SECTION A-A

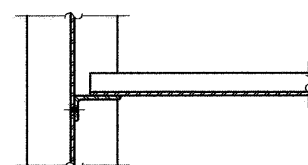
TOP OF BEAM ELEVATIONS

Location	Beam 1	Beam 2	Beam 3	Beam 4	Beam 5	Beam 6
⊕ Brg. W. Abut.	513.48	513.58	513.68	513.73	513.74	513.73
⊕ Pier 1	514.82	514.91	515.01	515.02	514.94	514.84
⊕ Splice 1	515.09	515.19	515.28	515.28	515.19	515.07
⊕ Splice 2	516.19	516.29	516.39	516.39	516.29	516.19
⊕ Pier 2	516.49	516.59	516.68	516.68	516.59	516.49
⊕ Brg. E. Abut.	517.93	518.03	518.12	518.12	518.03	517.93

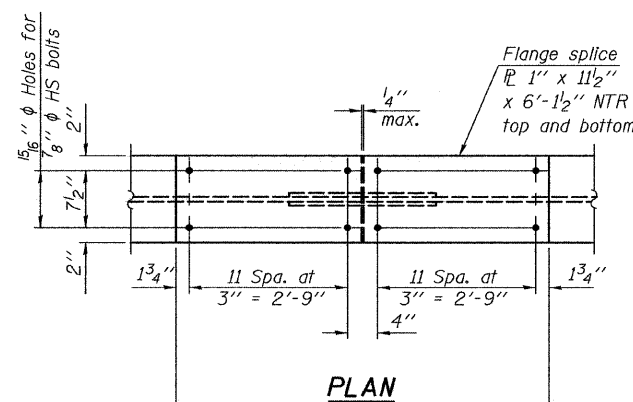
For Fabrication only

NOTES

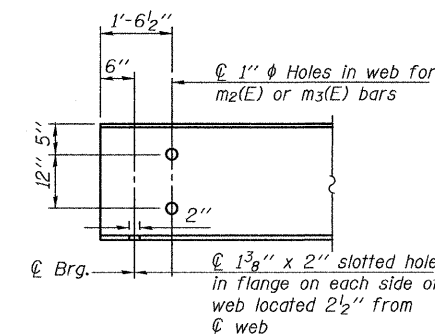
All beams and splice plates shall be M223 Grade 50. Load carrying components designated "NTR" shall conform to the Supplemental Requirements for Notch Toughness, Zone 2. All diaphragms between beams shall be installed with erection pins and bolts in accordance with the erection plan approved by the Engineer. Individual diaphragms at supports may be temporarily disconnected to install bearing anchor rods.



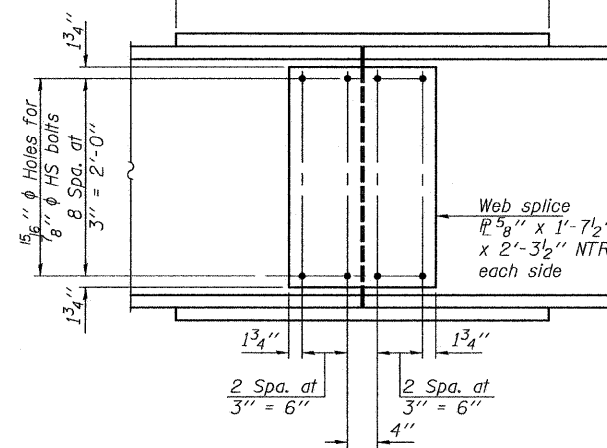
SECTION B-B



PLAN

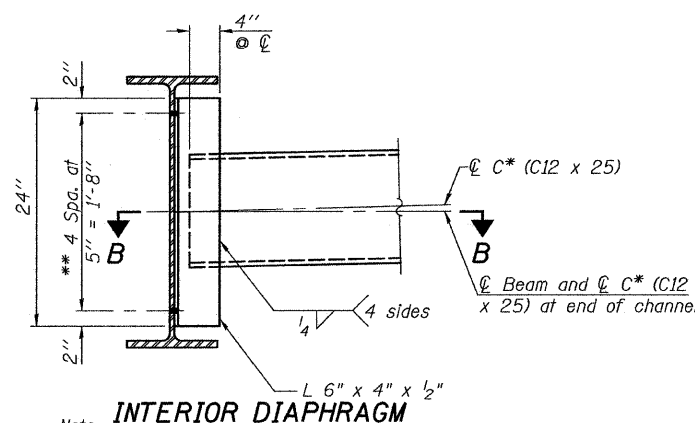


END OF BEAM DETAIL
(Showing Hole Locations)



ELEVATION

TYPICAL SPLICE DETAIL
(12 Required)



INTERIOR DIAPHRAGM

Note: Two hardened washers required for each set of oversized holes.

*Alternate channel C12 x 30 is permitted to facilitate material acquisition. Calculated weight of structural steel is based on the lighter section. Alternate, if utilized, shall be provided at no extra cost to the Department.
**3/4 inch HS bolts, 15/16 inch holes.

PLOT DATE = 10/21/2009
FILE NAME = \\smbp1\cpg-plans\gnt-15.dgn
PLOT SCALE = 1/8" = 1'-0" / IN.
USER NAME = CFC

ILLINOIS DEPARTMENT OF TRANSPORTATION	
SHEET TITLE STRUCTURAL STEEL	
PROJECT F.A.S. RT. 287 (C.H. 29) SECTION 05-00039-03-BR GRUNDY COUNTY STATION 126+42.00 STRUCTURE NO. 032-3101	PROJECT NO. 05042 SCALE DATE 10/21/09 DRAWN BY TFC CHECKED BY GME/MCB DRAWING NO.
COOMBE-BLOXDORF P.C. Engineers / Land Surveyors Springfield, Illinois Design Firm License No. 184-002703	15 OF 25 SHTS