



BASELINES COORDINATE TABLE			
STATION		NORTHING	EASTING
PLANK RD	295+08.47		
= EX.LINDGREN RD	24+13.29	1,949,072.04	894,494.49
PLANK RD	300+74.23		
= PR.LINDGREN RD	35+57.43	1,949,579.08	894,745.48
PLANK RD	300+74.39		
= NORTH GROVE RD	35+57.43	1,949,579.23	894,745.54
NORTH GROVE RD	POT 32+00.00	1,949,737.79	894,425.21
PR.LINDGREN RD	40+94.93		
= PR.NATIONAL ST	5+00	1,949,340.40	895,227.07
NATIONAL ST	2+29.06		
= EX.LINDGREN RD	31+04.32	1,949,078.28	895,185.49
NATIONAL ST	PT 4+38.49	1,949,217.25	895,184.16
NATIONAL ST	POT 4+03.26	1,949,253.14	895,183.82
NATIONAL ST	PC 3+68.04	1,949,285.29	895,199.76

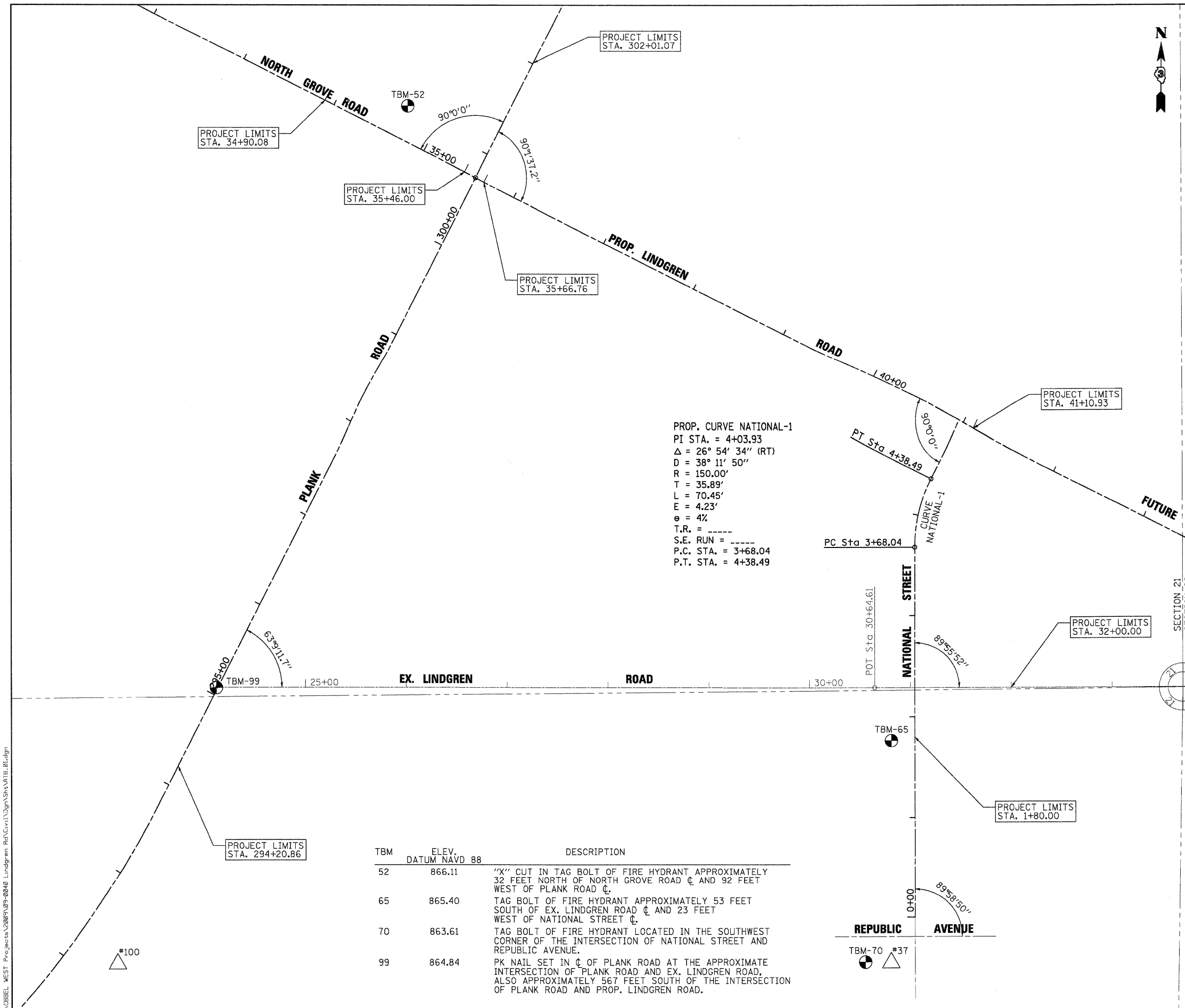
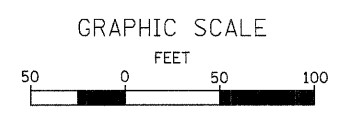
CONTROL POINTS COORDINATE TABLE				
POINT NO.	NORTHING	EASTING	STATION	OFFSET
22	1,949,079.97	895,658.13	35+76.95	3.43' RT.
37	1,948,804.64	895,164.17	0-44.36	23.93' LT.
100	1,948,796.42	894,397.27	292+25.35	48.05' RT.

PROP. CURVE NATIONAL-1
 PI STA. = 4+03.93
 $\Delta = 26^\circ 54' 34''$ (RT)
 D = 38' 11" 50"
 R = 150.00'
 T = 35.89'
 L = 70.45'
 E = 4.23'
 $e = 4\%$
 T.R. = -----
 S.E. RUN = -----
 P.C. STA. = 3+68.04
 P.T. STA. = 4+38.49

PROP. CURVE LINDGREN-1
 PI STA. = 46+71.16
 $\Delta = 27^\circ 00' 06''$ (LT)
 D = 5' 43' 46"
 R = 1,000.00'
 T = 240.10'
 L = 471.27'
 E = 28.42'
 $e = 4\%$
 T.R. = 52'
 S.E. RUN = 104'
 P.C. STA. = 44+31.07
 P.T. STA. = 49+02.34

TBM	ELEV. DATUM NAVD 88	DESCRIPTION
52	866.11	"X" CUT IN TAG BOLT OF FIRE HYDRANT APPROXIMATELY 32 FEET NORTH OF NORTH GROVE ROAD ϕ AND 92 FEET WEST OF PLANK ROAD ϕ .
65	865.40	TAG BOLT OF FIRE HYDRANT APPROXIMATELY 53 FEET SOUTH OF EX. LINDGREN ROAD ϕ AND 23 FEET WEST OF NATIONAL STREET ϕ .
70	863.61	TAG BOLT OF FIRE HYDRANT LOCATED IN THE SOUTHWEST CORNER OF THE INTERSECTION OF NATIONAL STREET AND REPUBLIC AVENUE.
99	864.84	PK NAIL SET IN ϕ OF PLANK ROAD AT THE APPROXIMATE INTERSECTION OF PLANK ROAD AND EX. LINDGREN ROAD, ALSO APPROXIMATELY 567 FEET SOUTH OF THE INTERSECTION OF PLANK ROAD AND PROP. LINDGREN ROAD.

LEGEND
 = TEMPORARY BENCHMARK LOCATION
 = HORIZONTAL CONTROL POINT LOCATION



FILE NAME = P:\CIBEL\WEST Projects\2009\09-0840 Lindgren Ref.Civil\Drawings\11B.dwg

WBK WILLS BURKE KELSEY ASSOCIATES LTD.
 118 West Main Street, Suite 201
 St. Charles, Illinois 60174
 (630) 443-7755

USER NAME = #USER#	DESIGNED - KMA	REVISED -
PLOT SCALE = 1"=50'	DRAWN - NDP	REVISED -
PLOT DATE = 10/28/2009	CHECKED - SBP	REVISED -
	DATE - 10/1/09	REVISED -

**STATE OF ILLINOIS
 DEPARTMENT OF TRANSPORTATION**

ALIGNMENT, TIES & BENCHMARKS

SCALE: 1"=50' SHEET NO. 12 OF 54 SHEETS STA. TO STA.

F.A.U. RTE.	SECTION	COUNTY	TOTAL SHEETS	SHEET NO.
5369	09-00068-00-FP	DEKALB	54	12
FED. ROAD DIST. NO. 3 [ILLINOIS] FED. AID PROJECT			CONTRACT NO. 87406	