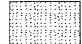
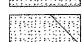

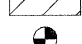
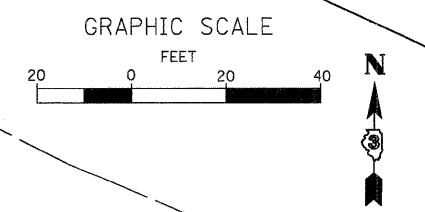
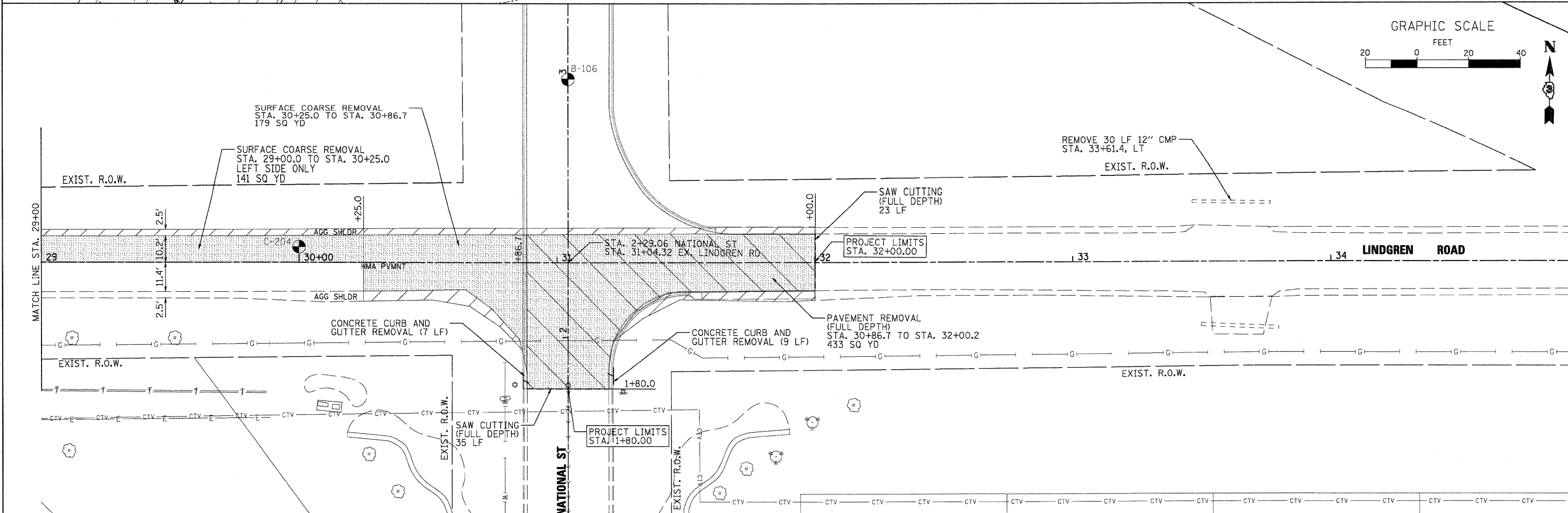
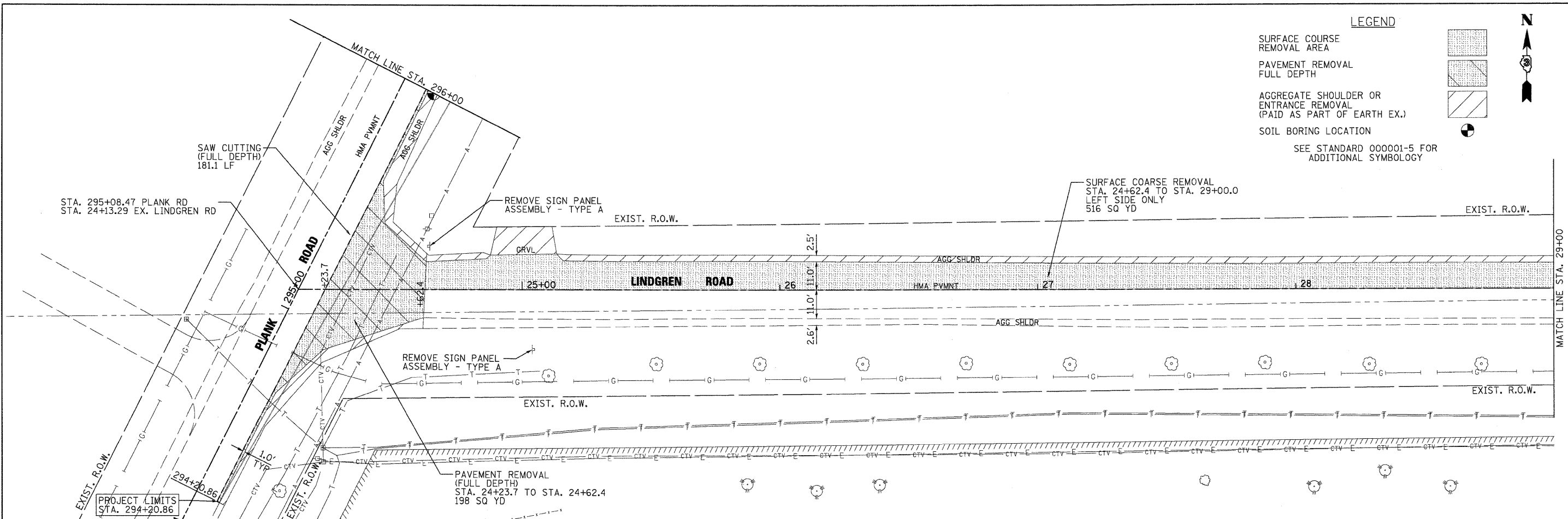


LEGEND

- SURFACE COURSE REMOVAL AREA 
 - PAVEMENT REMOVAL FULL DEPTH 
 - AGGREGATE SHOULDER OR ENTRANCE REMOVAL (PAID AS PART OF EARTH EX.) 
 - SOIL BORING LOCATION 
- SEE STANDARD 00001-5 FOR ADDITIONAL SYMBOLLOGY



FILE NAME = P:\CIBBEL WEST Projects\2009\09-20040 Lindgren Rd\Civil\Drawings\DEMO.dwg

WILLS BURKE KELSEY ASSOCIATES LTD.
 116 West Main Street, Suite 201
 St. Charles, Illinois 60174
 (630) 443-7755

USER NAME = #USER#	DESIGNED - KMA	REVISED -
PLOT SCALE = 1"=20'	DRAWN - NDP	REVISED -
PLOT DATE = 10/27/2009	CHECKED - SBP	REVISED -
	DATE - 10/1/09	REVISED -

**STATE OF ILLINOIS
DEPARTMENT OF TRANSPORTATION**

REMOVAL PLANS LINDGREN ROAD	
SCALE: 1"=20'	SHEET NO. 13 OF 54 SHEETS STA. TO STA.

F.A.U. RTE. 5369	SECTION 09-00068-00-FP	COUNTY DEKALB	TOTAL SHEETS 54	SHEET NO. 13
FED. ROAD DIST. NO. 3 ILLINOIS FED. AID PROJECT CONTRACT NO. 87406				