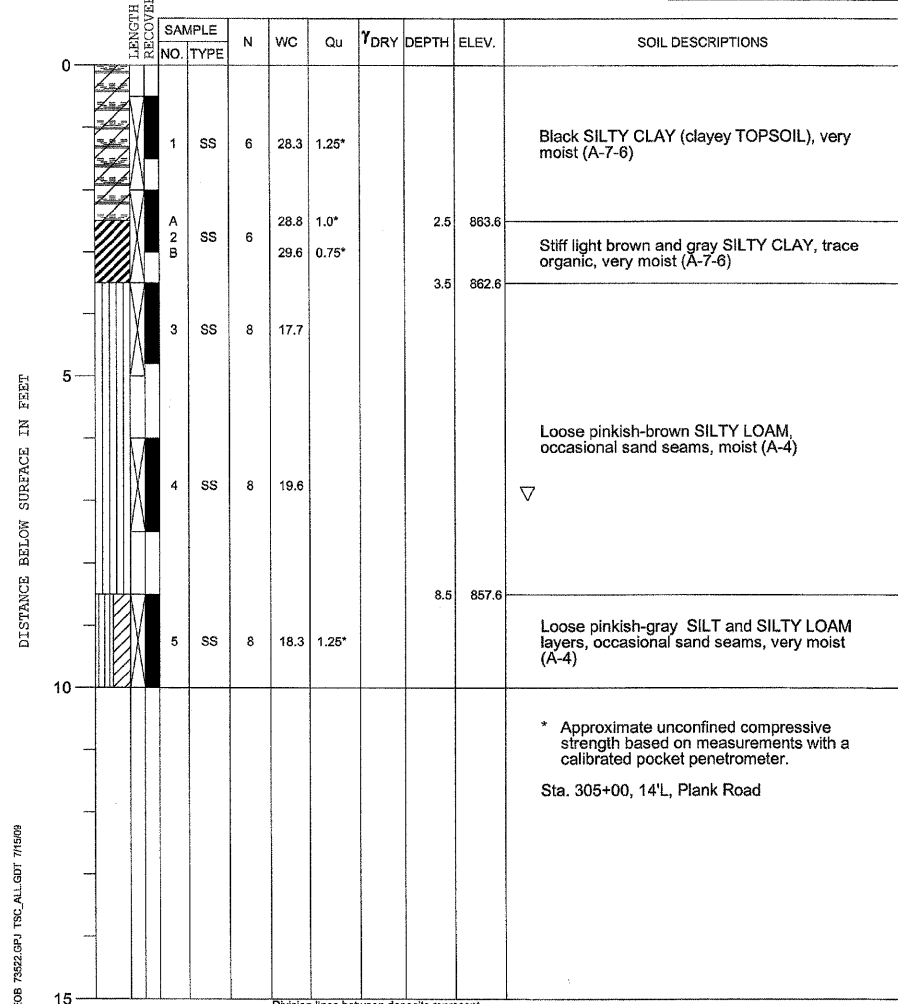


PROJECT Lindgren Road Realignment, Sycamore, Illinois
 CLIENT Wills Burke Kelsey Associates, Ltd., St. Charles, Illinois
 BORING 110 DATE STARTED 6-12-09 DATE COMPLETED 6-12-09 JOB L-73,522
 ELEVATIONS WATER LEVEL OBSERVATIONS
 GROUND SURFACE 866.1 WHILE DRILLING Dry
 END OF BORING 856.1 AT END OF BORING 7.0'
 24 HOURS



TSC JOB 73522.09U TSC ALL GDT 7/14/09
 DRILL RIG NO. 334 Division lines between deposits represent approximate boundaries between soil types; in-situ, the transition may be gradual. End of Boring at 10.0'

FILE NAME = P:\DBEEL WEST Projects\2009\09-0000 Lindgren Rd\Civil\Drawings\SOIL BORING.03.dgn

WILLS BURKE KELSEY ASSOCIATES LTD.
 116 West Main Street, Suite 201
 St. Charles, Illinois 60174
 (630) 443-7755

USER NAME = #USER#	DESIGNED - KMA	REVISED -
PLOT SCALE = NONE	DRAWN - NDP	REVISED -
PLOT DATE = 10/26/2009	CHECKED - SBP	REVISED -
	DATE - 10/1/09	REVISED -

**STATE OF ILLINOIS
 DEPARTMENT OF TRANSPORTATION**

SOIL BORING LOG

SCALE: NONE SHEET NO. 36 OF 54 SHEETS STA. TO STA.

F.A. RTE.	SECTION	COUNTY	TOTAL SHEETS	SHEET NO.
5369	09-00068-00-FP	DEKALB	54	36
FED. ROAD DIST. NO. 3 ILLINOIS FED. AID PROJECT				

CONTRACT NO. 87406