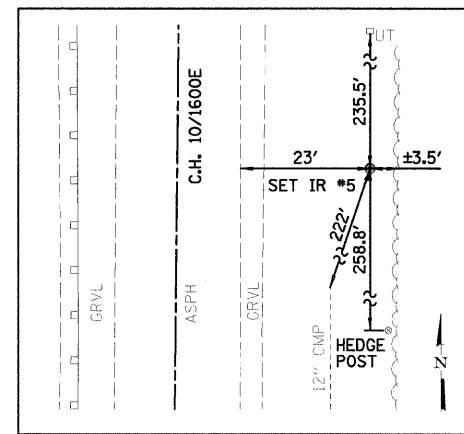
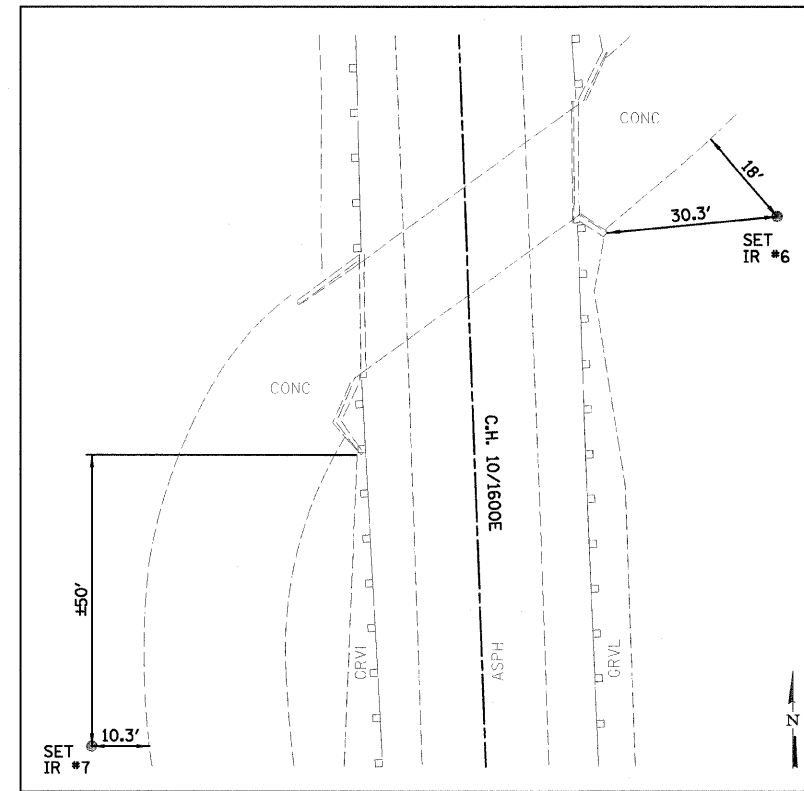


SET IR #3
STA. 23+93.18/37.55' LT.
N = 20000.000
E = 20000.000

SET IR #4
STA. 23+21.76/61.56' RT.
N = 19928.124
E = 20098.953

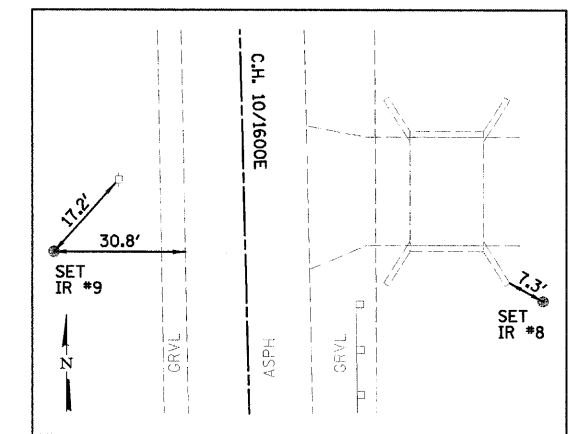


SET IR #5
STA. 29+12.67/34.12' RT.
N = 20518.761
E = 20076.811



SET IR #7
STA. 114+13.34/69.49' LT.
N = 29004.690
E = 19904.260

SET IR #6
STA. 115+02.92/55.05' RT.
N = 29098.758
E = 20025.446



SET IR #9
STA. 121+31.72/40.79' LT.
N = 29724.276
E = 19911.647

SET IR #8
STA. 121+20.64/52.39' RT.
N = 29715.496
E = 20005.068

BENCHMARK:
*641, SET CPS EAST SIDE OF POWER POLE,
1ST NORTH OF BRIDGE, ±60' NORTH, WEST
SIDE OF C.H. 10, STA. 115+56/35' LT.
ELEVATION = 93.78

BENCHMARK:
*645, SET CPS WEST SIDE OF POWER POLE,
4TH NORTH OF BRIDGE, WEST SIDE OF C.H. 10,
STA. 121+45/30' LT.
ELEVATION = 92.20

BENCHMARK:
*926, SET PK NAIL SOUTHWEST CORNER HEDGE
POST AT EAST-WEST CROP LINE, ±150' NORTH
OF NORTH END OF EAST GUARDRAIL ON EAST
SIDE OF C.H. 10, STA. 26+54/40' RT.
ELEVATION = 101.51

BENCHMARK:
*1232, CUT "X" ON TOP EAST-MOST SIDE OF
SOUTH-MOST I-BEAM FOR GUARDRAIL, EAST
SIDE OF C.H. 10, ±50' NORTH OF SOUTH END
OF GUARDRAIL, STA. 22+17/17' RT.
ELEVATION = 105.15

DESIGNED - JML	REVISED -
DRAWN - DJM	REVISED -
CHECKED - MSW	REVISED -
DATE - 10/21/09	REVISED -

LIVINGSTON COUNTY DEPARTMENT OF HIGHWAYS

SURVEY TIES AND BENCHMARKS

WESTON ROAD (C.H. 10) OVER HICKORY CREEK
SECTION 09-00120-03-BR
LIVINGSTON, COUNTY

F.A.S.	SECTION	COUNTY	TOTAL SHEETS	SHEET NO.
349	09-00120-03-BR	LIVINGSTON	34	6
CONTRACT NO. 87412				
FED. ROAD DIST. NO. [ILLINOIS] FED. AID PROJECT				

FARNSWORTH GROUP, INC.

CONSULTING ENGINEERS - 2709 MCGRAW DRIVE BLOOMINGTON, ILLINOIS 61704 (309) 663-8435 / (309) 663-1571 FAX

24-8255