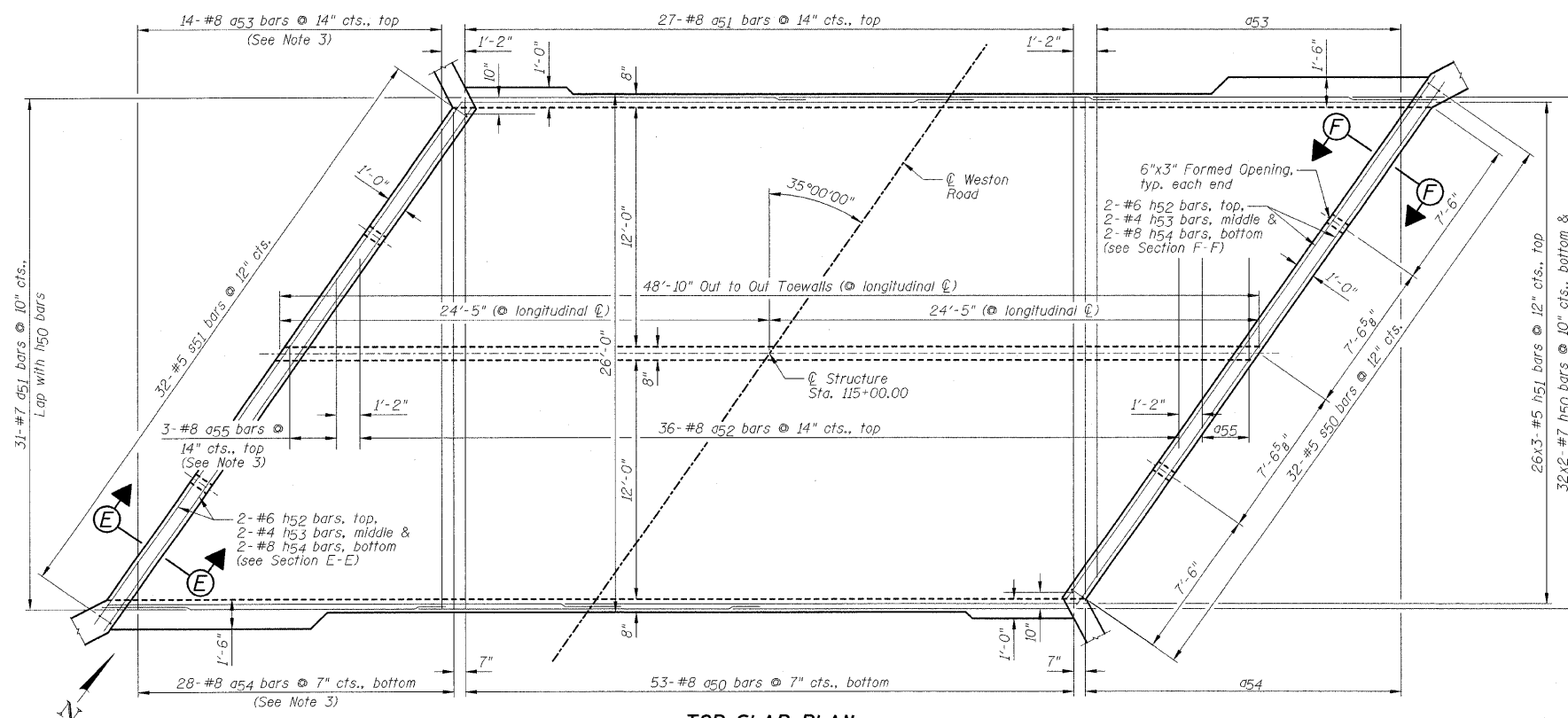
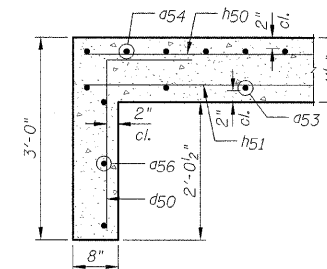


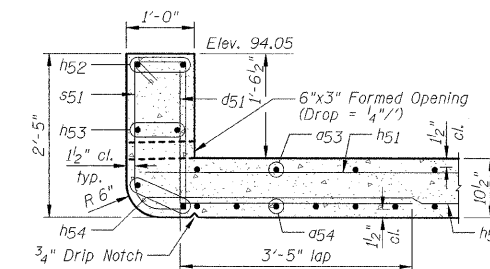
BOTTOM SLAB PLAN



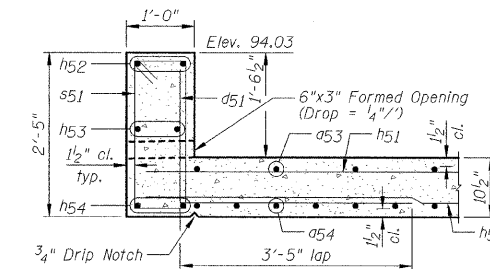
TOP SLAB PLAN



SECTION A-A



SECTION E-E



SECTION F-F

NOTES:

- 1.) For Bill of Material, see Sheet B2.
- 2.) For bar lap length, see the General Notes on Sheet B2.
- 3.) Order #53, #54 and #55 bars full length. Cut according to the Bar Cutting Diagram on Sheet B2. Use remainder of bars in opposite end of slab.
- 4.) For View B-B thru View D-D, see Sheet B4.

DESIGNED - JML	REVISED -
DRAWN - DJM	REVISED -
CHECKED - MSW	REVISED -
DATE - 10/21/09	REVISED -

LIVINGSTON COUNTY DEPARTMENT OF HIGHWAYS

BOTTOM & TOP SLAB REINFORCEMENT PLANS

**WESTON ROAD (C.H.10) OVER HICKORY CREEK
SECTION 09-00120-03-BR
LIVINGSTON, COUNTY
STATION 115+00.00**

F.A.S.	SECTION	COUNTY	TOTAL SHEETS	SHEET NO.
349	09-00120-03-BR	LIVINGSTON	34	25
S.N. 053-5015		CONTRACT NO. 87412		
FED. ROAD DIST. NO.		ILLINOIS FED. AID PROJECT		

SCALE: SHEET NO. B3 OF 8 SHEETS STA. TO STA.