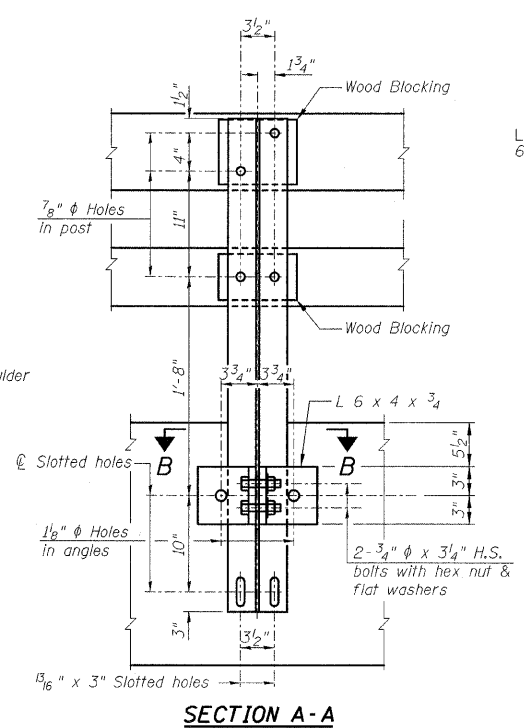
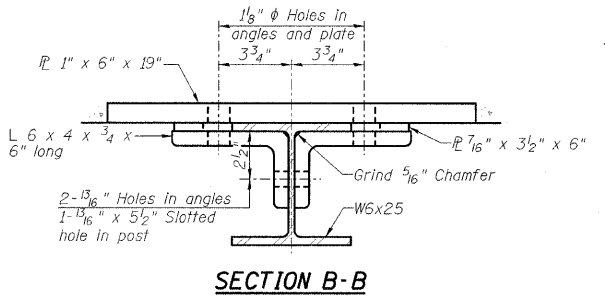


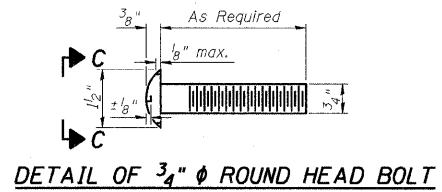
SECTION AT RAIL POST



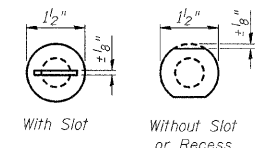
SECTION A-A



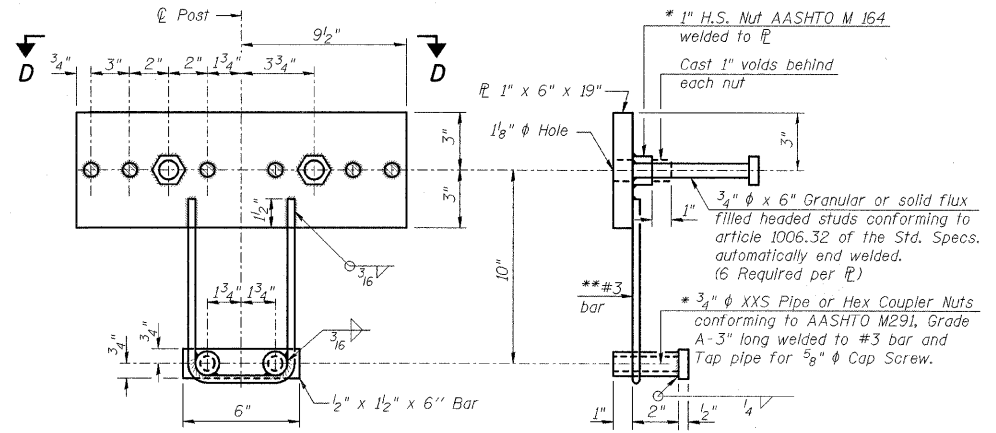
SECTION B-B



DETAIL OF 3/4" ROUND HEAD BOLT

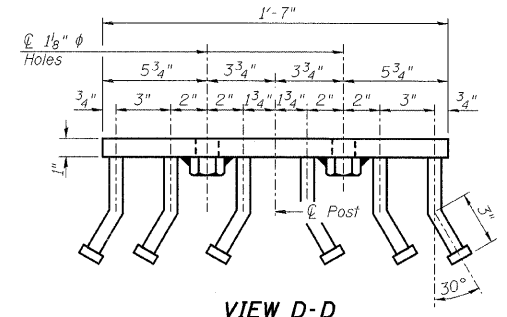


VIEW C-C

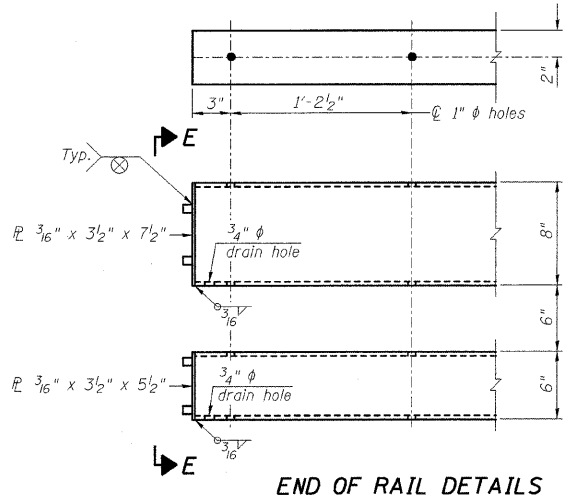


ANCHOR DEVICE

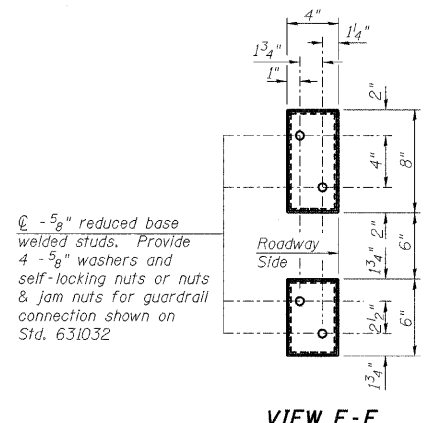
\*Threaded areas shall be plugged or blocked off during casting of the headwall. Galvanized after concrete placement.  
 \*\*Whenever the lower insert assemblies interfere with reinforcement locations, the #3 bars shall be cut and adjusted in order to allow raising or lowering of the lower inserts. Maximum adjustment not to exceed 1/2 inch.



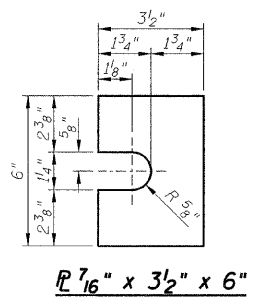
VIEW D-D



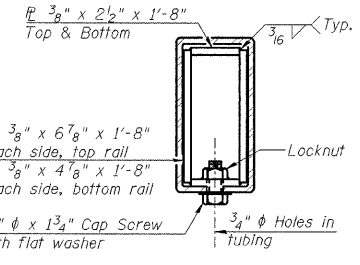
END OF RAIL DETAILS



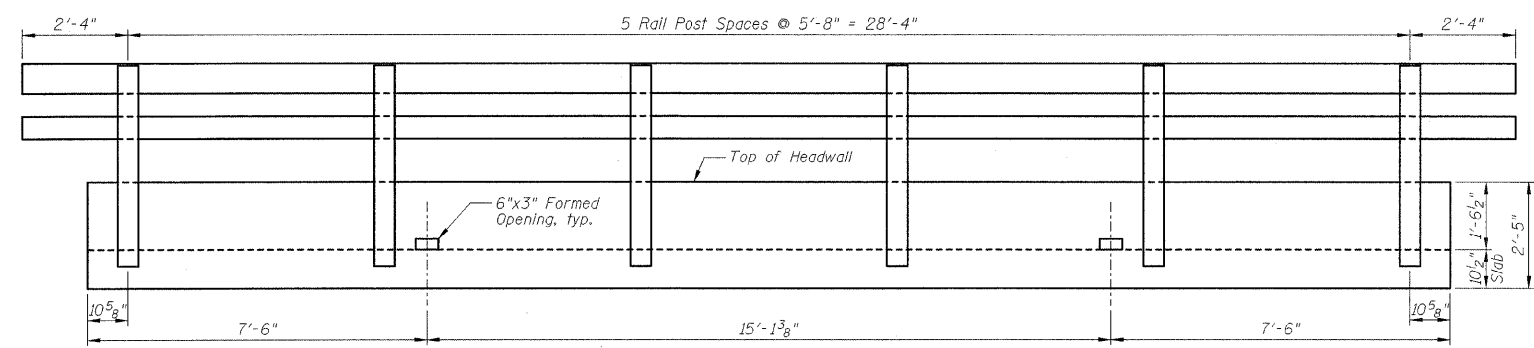
VIEW E-E



PLAN-BOTT. SPLICE P TYPICAL



SECTION AT RAIL SPLICE



RAIL POST SPACING DETAIL

BILL OF MATERIAL

Item	Unit	Quantity
Steel Railing, Type SM	Foot	66

NOTES:

- All field drilled holes shall be coated with an approved zinc rich paint before erection.
- All steel rail members shall be galvanized according to Article 509.05 of the Standard Specifications.

DESIGNED - JML	REVISED -
DRAWN - DJM	REVISED -
CHECKED - MSW	REVISED -
DATE - 10/21/09	REVISED -

LIVINGSTON COUNTY DEPARTMENT OF HIGHWAYS

STEEL RAILING, TYPE SM

WESTON ROAD (C.H. 10) OVER HICKORY CREEK  
 SECTION 09-00120-03-BR  
 LIVINGSTON, COUNTY  
 STATION 115+00.00

F.A.S.	SECTION	COUNTY	TOTAL SHEETS	SHEET NO.
349	09-00120-03-BR	LIVINGSTON	34	28
S.N. 053-5015		CONTRACT NO. 87412		
FED. ROAD DIST. NO.		ILLINOIS FED. AID PROJECT		

FARNSWORTH GROUP, INC.

CONSULTING ENGINEERS - 2709 MCGRAW DRIVE BLOOMINGTON, ILLINOIS 61704 (309) 663-8435 / (309) 663-1571 FAX

24-8255