

F. A. U. NO.	SECTION	COUNTY	TOTAL SHEETS	SHEET NO.
09-00059-00-RS	09-00059-00-RS	IROQUOIS	4	1
STA.	TO STA.			
FED. ROAD DIST. NO. 3	ILLINOIS	FED. AID PROJECT	ARA 5069(005)	

CONTRACT #87436

INDEX OF SHEETS

1. COVER SHEET
2. SUMMARY OF QUANTITIES AND GENERAL NOTES
3. TYPICAL CROSS SECTIONS
4. SCHEDULE OF QUANTITIES

STATE STANDARDS

- 000001-05 STANDARD SYMBOLS, ABBREVIATIONS AND PATTERNS
- 424001-05 CURB RAMPS FOR SIDEWALKS
- 442201-03 FRAME AND LIDS, TYPE 1
- 604001-03 CONCRETE CURB & COMBINATION CONCRETE CURB & GUTTER
- 701006-03 OFF-RD OPERATIONS, 2L, 2W, 15' TO 24" FROM PAVEMENT EDGE
- 701501-05 URBAN LANE CLOSURE, 2L, 2W, UNDIVIDED
- 701701-06 URBAN LANE CLOSURE, MULTILANE INTERSECTION
- 701801-04 LANE CLOSURE, MULTILANE, 1W OR 2W, CROSSWALK OR SIDEWALK CLOSURE
- 701901-01 TRAFFIC CONTROL DEVICES
- 780001-02 TYPICAL PAVEMENT MARKINGS

**STATE OF ILLINOIS
DEPARTMENT OF TRANSPORTATION
DIVISION OF HIGHWAYS**

**PLANS FOR PROPOSED
FEDERAL AID HIGHWAY**

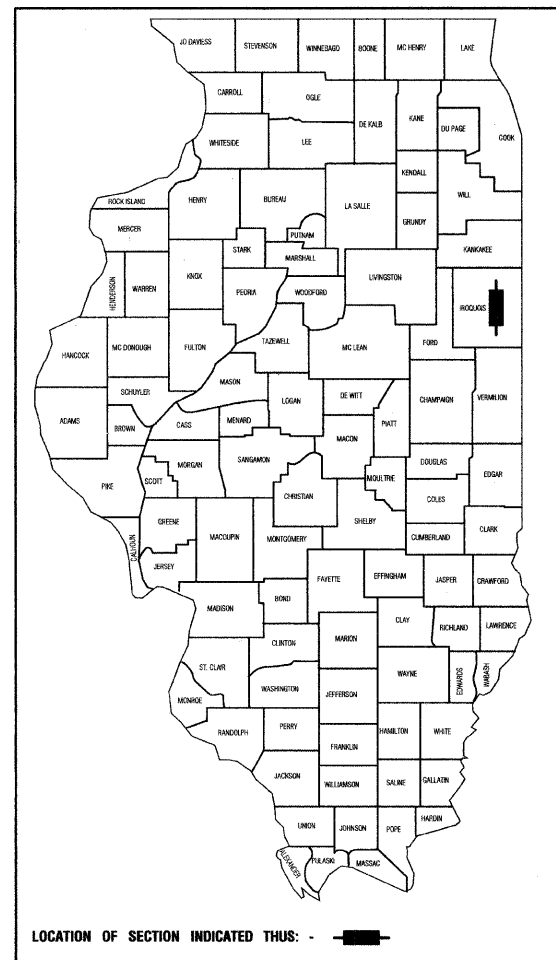
**ARRA - AMERICAN RECOVERY AND REINVESTMENT ACT
FAU 6288 (5TH STREET), FAU6290 (8TH STREET) AND FAU 6278 (ELM STREET)**

LOCAL AGENCY PAVEMENT PRESERVATION (LAPP)

**PROJECT: ARA 5069(005)
SECTION NO.: 09-00059-00-RS**

JOB NO.: C-93-012-10

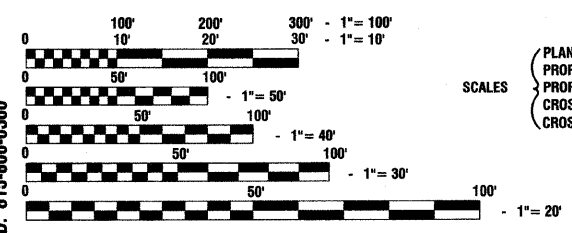
**CITY OF WATSEKA
IROQUOIS COUNTY**



TRAFFIC DATA - 5TH STREET, 8TH STREET AND ELM STREET

2009 ADT - 1,450-ELM STREET (COLLECTOR)
950-8TH STREET (COLLECTOR)
900-5TH STREET (COLLECTOR)

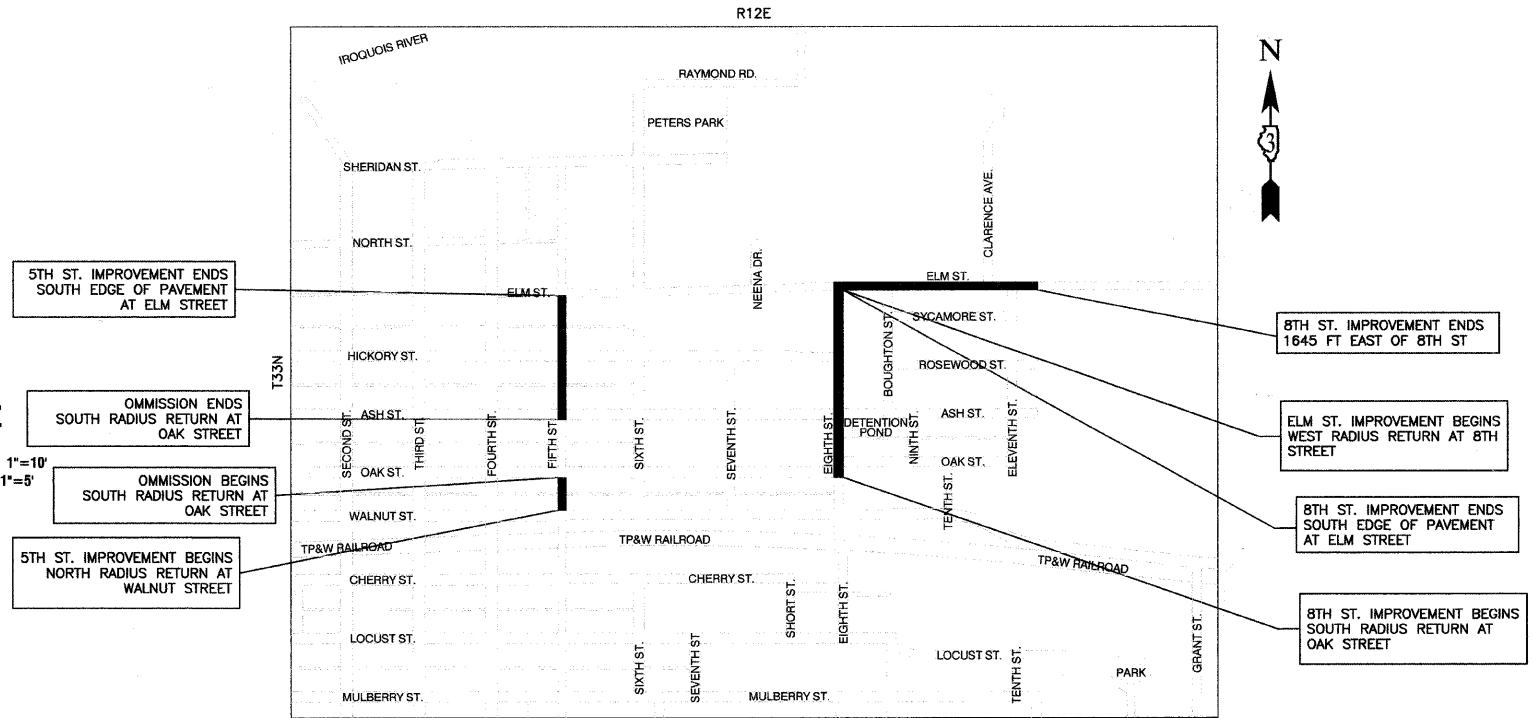
POSTED SPEED LIMIT - 30 MPH
DESIGNED SPEED LIMIT - 30 MPH



FULL SIZE PLANS HAVE BEEN PREPARED USING STANDARD ENGINEERING SCALES, REDUCED SIZED PLANS WILL NOT CONFORM TO STANDARD SCALES. IN MAKING MEASUREMENTS ON REDUCED PLANS, THE ABOVE SCALES MAY BE USED.

J. U. L. I. E.
JOINT UTILITY LOCATION INFORMATION FOR EXCAVATION
1-800-892-0123 or 811

CONTRACT NO. 87436



PROJECT LOCATION

GROSS LENGTH= 4,296 FEET = 0.81 MILES
NET LENGTH= 3,907 FEET = 0.74 MILES

PRINTED BY THE AUTHORITY OF THE STATE OF ILLINOIS

STATE OF ILLINOIS DEPARTMENT OF TRANSPORTATION
DIVISION OF HIGHWAYS

Approved 10-15-09
[Signature]
Mayor, City of Watseka

Passed 10-23-09
[Signature]
District 3, Region 2 Engineer of Local Roads & Streets

Released for Bid Based on Limited Review 10-23-09
[Signature]
Deputy Director of Highways, District 3, Region 2 Engineer

DESCRIPTION OF IMPROVEMENT
THIS IMPROVEMENT CONSISTS OF EARTH EXCAVATION, HMA SURFACE REMOVAL, HOT-MIX ASPHALT, CURB AND GUTTER, SIDEWALK, LANDSCAPING, AND ALL INCIDENTAL WORK AS NECESSARY TO COMPLETE THE IMPROVEMENT SHOWN HEREIN AND AS DESCRIBED IN THE SPECIFICATIONS.

PREPARED BY OR UNDER THE DIRECT SUPERVISION OF:

[Signature]
10/15/09



FIELD ENGINEER: KELLY VLASTNIK
CONSULTANTS: ROBINSON ENGINEERING, LTD. 815-906-0300