

F. A. U. NO.	SECTION	COUNTY	TOTAL SHEETS	SHEET NO.
09-00059-00-RS	09-00059-00-RS	IROQUOIS	4	1
STA.	TO STA.			
FED. ROAD DIST. NO. 3	ILLINOIS	FED. AID PROJECT	ARA 5069(005)	

CONTRACT #87436

INDEX OF SHEETS

1. COVER SHEET
2. SUMMARY OF QUANTITIES AND GENERAL NOTES
3. TYPICAL CROSS SECTIONS
4. SCHEDULE OF QUANTITIES

STATE STANDARDS

- 000001-05 STANDARD SYMBOLS, ABBREVIATIONS AND PATTERNS
- 424001-05 CURB RAMPS FOR SIDEWALKS
- 442201-03 FRAME AND LIDS, TYPE 1
- 604001-03 CONCRETE CURB & COMBINATION CONCRETE CURB & GUTTER
- 701006-03 OFF-RD OPERATIONS, 2L, 2W, 15' TO 24" FROM PAVEMENT EDGE
- 701501-05 URBAN LANE CLOSURE, 2L, 2W, UNDIVIDED
- 701701-06 URBAN LANE CLOSURE, MULTILANE INTERSECTION
- 701801-04 LANE CLOSURE, MULTILANE, 1W OR 2W, CROSSWALK OR SIDEWALK CLOSURE
- 701901-01 TRAFFIC CONTROL DEVICES
- 780001-02 TYPICAL PAVEMENT MARKINGS

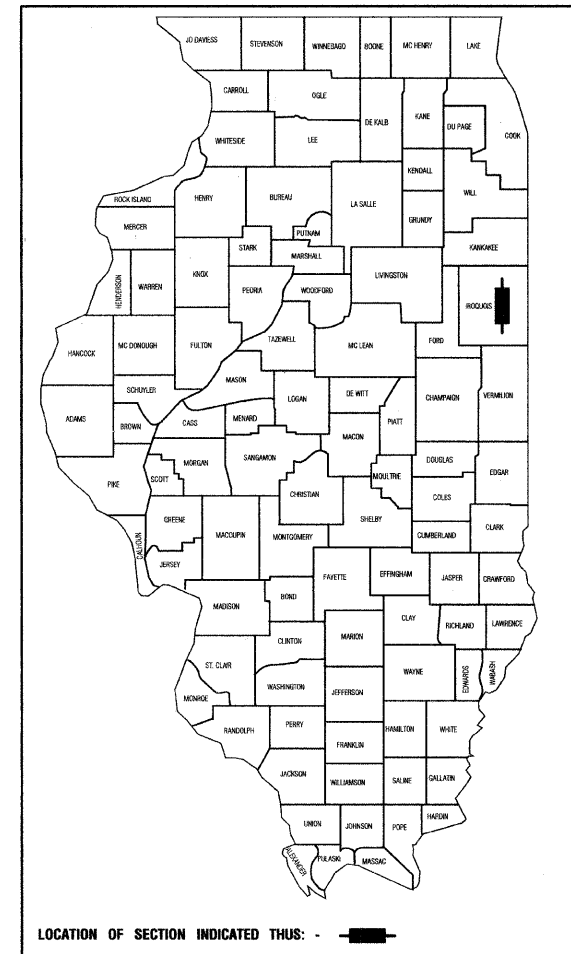
STATE OF ILLINOIS
DEPARTMENT OF TRANSPORTATION
DIVISION OF HIGHWAYS

**PLANS FOR PROPOSED
FEDERAL AID HIGHWAY**

ARRA - AMERICAN RECOVERY AND REINVESTMENT ACT
FAU 6288 (5TH STREET), FAU6290 (8TH STREET) AND FAU 6278 (ELM STREET)

LOCAL AGENCY PAVEMENT PRESERVATION (LAPP)

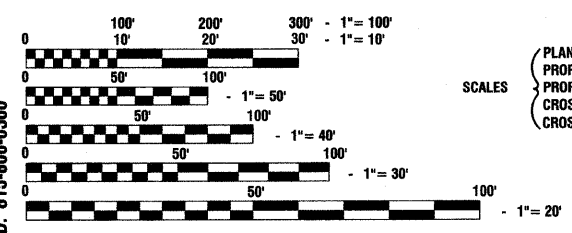
PROJECT: ARA 5069(005)
SECTION NO.: 09-00059-00-RS
JOB NO.: C-93-012-10
CITY OF WATSEKA
IROQUOIS COUNTY



TRAFFIC DATA - 5TH STREET, 8TH STREET AND ELM STREET

2009 ADT - 1,450-ELM STREET (COLLECTOR)
950-8TH STREET (COLLECTOR)
900-5TH STREET (COLLECTOR)

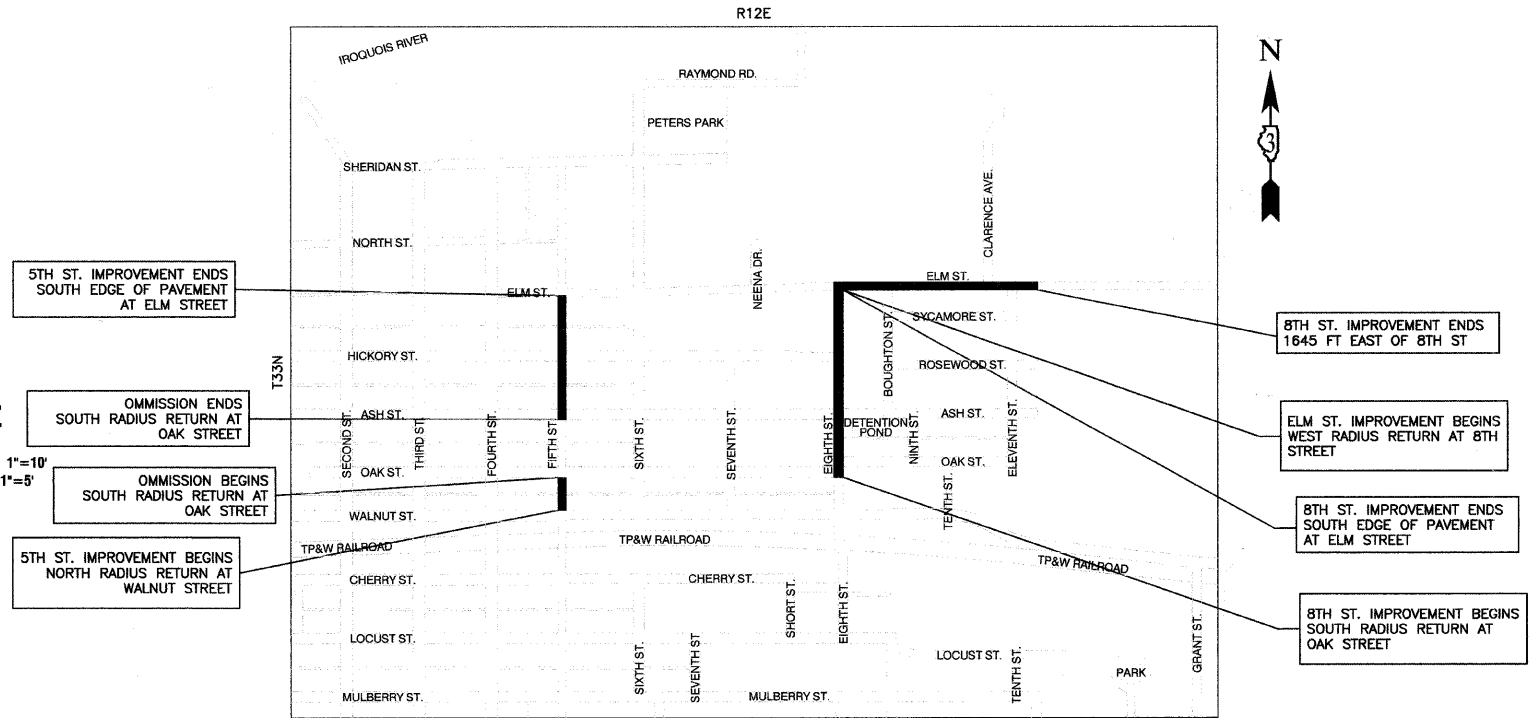
POSTED SPEED LIMIT - 30 MPH
DESIGNED SPEED LIMIT - 30 MPH



FULL SIZE PLANS HAVE BEEN PREPARED USING STANDARD ENGINEERING SCALES, REDUCED SIZED PLANS WILL NOT CONFORM TO STANDARD SCALES. IN MAKING MEASUREMENTS ON REDUCED PLANS, THE ABOVE SCALES MAY BE USED.

J. U. L. I. E.
JOINT UTILITY LOCATION INFORMATION FOR EXCAVATION
1-800-892-0123 or 811

CONTRACT NO. 87436



PROJECT LOCATION

GROSS LENGTH= 4,296 FEET = 0.81 MILES
NET LENGTH= 3,907 FEET = 0.74 MILES

PRINTED BY THE AUTHORITY OF THE STATE OF ILLINOIS

STATE OF ILLINOIS DEPARTMENT OF TRANSPORTATION
DIVISION OF HIGHWAYS

Approved: 10-15-09
[Signature]
Mayor, City of Watseka

Passed: 10-23-09
[Signature]
District 3, Region 2 Engineer of Local Roads & Streets

Released for Bid Based on Limited Review: 10-23-09
[Signature]
Deputy Director of Highways, District 3, Region 2 Engineer

DESCRIPTION OF IMPROVEMENT
THIS IMPROVEMENT CONSISTS OF EARTH EXCAVATION, HMA SURFACE REMOVAL, HOT-MIX ASPHALT, CURB AND GUTTER, SIDEWALK, LANDSCAPING, AND ALL INCIDENTAL WORK AS NECESSARY TO COMPLETE THE IMPROVEMENT SHOWN HEREIN AND AS DESCRIBED IN THE SPECIFICATIONS.

PREPARED BY OR UNDER THE DIRECT SUPERVISION OF:

[Signature]
10/15/09



FIELD ENGINEER: KELLY VLASTNIK
CONSULTANTS: ROBINSON ENGINEERING, LTD. 815-906-0300

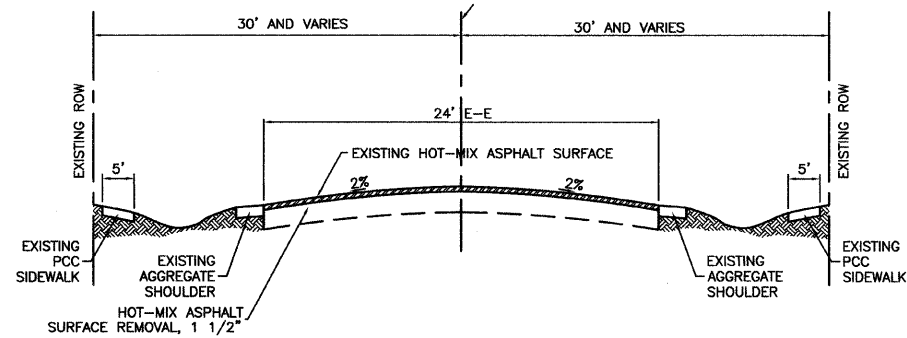
SUMMARY OF QUANTITIES						PAVEMENT	MARKINGS	SIGNS	LANDSCAPE	LIGHTS	SIGNALS	TRAINING
S.I.	CODE NO.	PAY ITEM	UNIT	QUAN	CONSTRUCTION TYPE CODE							
					1000	SFTY-1D	Y002-1C	Y003	Y030-1E	Y031	Y080	
	21101625	TOPSOIL FURNISH AND PLACE, 6"	SQ YD	100	100							
	25200650	SODDING, SALT TOLERANT (SPECIAL)	SQ YD	100	100							
	40600100	BITUMINOUS MATERIALS (PRIME COAT)	GALLON	1140	1140							
	40600300	AGGREGATE (PRIME COAT)	TON	30	30							
	40600625	LEVELING BINDER (MACHINE METHOD), N50	TON	360	360							
	40600982	HOT-MIX ASPHALT SURFACE REMOVAL - BUTT JOINT	SQ YD	200	200							
	40603310	HOT-MIX ASPHALT SURFACE COURSE, MIX "C", N50	TON	1054	1054							
	42400800	DETECTABLE WARNINGS	SQ FT	88	88							
	44000155	HOT-MIX ASPHALT SURFACE REMOVAL, 1 1/2"	SQ YD	11391	11391							
	44001700	COMBINATION CURB AND GUTTER REMOVAL AND REPLACEMENT	FOOT	335	335							
	44201729	CLASS D PATCHES, TYPE II, 7 INCH	SQ YD	49	49							
	44201733	CLASS D PATCHES, TYPE III, 7 INCH	SQ YD	100	100							
	44201735	CLASS D PATCHES, TYPE IV, 7 INCH	SQ YD	202	202							
	48102100	AGGREGATE WEDGE SHOULDER, TYPE B	TON	220	220							
	60250200	CATCH BASINS TO BE ADJUSTED	EACH	3	3							
	60250400	CATCH BASINS TO BE ADJUSTED WITH NEW TYPE 1 FRAME, OPEN LID	EACH	1	1							
	60255500	MANHOLES TO BE ADJUSTED	EACH	6	6							
	60266600	VALVE BOXES TO BE ADJUSTED	EACH	4	4							
	67100100	MOBILIZATION	L SUM	1	1							
	70101800	TRAFFIC CONTROL AND PROTECTION (SPECIAL)	L SUM	1	1							
	XX001306	SIDEWALK REMOVAL AND REPLACEMENT	SQ FT	299	299							

* - INDICATES SPECIALTY ITEMS

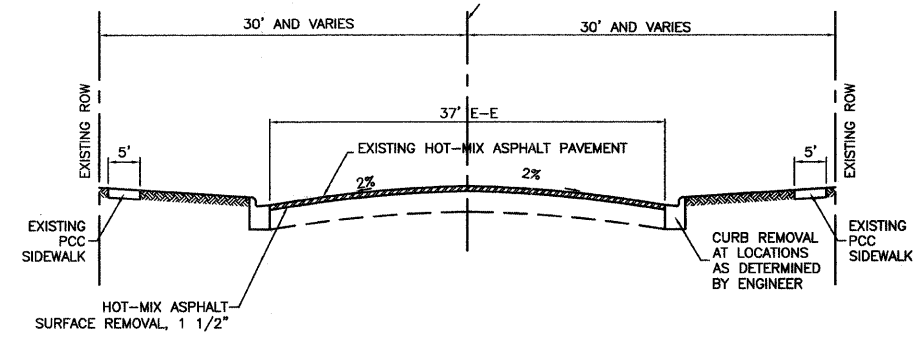
GENERAL NOTES

- BEFORE STARTING ANY EXCAVATION, THE CONTRACTOR SHALL CALL "J.U.L.I.E." AT (800) 892-0123 FOR FIELD LOCATIONS OF BURIED ELECTRIC, TELEPHONE AND GAS UTILITIES. (48 HOUR NOTIFICATION IS REQUIRED).
- UTILITIES INDICATED ON THE PLANS ARE PROVIDED FOR THE CONTRACTORS USE AND ARE BASED UPON INFORMATION AVAILABLE AT THE TIME OF THE ADVERTISEMENT FOR BIDS. THE OWNER AND ENGINEER DO NOT GUARANTEE THE ACCURACY OF UTILITIES INFORMATION.
- IT SHALL BE THE CONTRACTOR'S RESPONSIBILITY TO VERIFY ALL DIMENSIONS AND CONDITIONS EXISTING IN THE FIELD PRIOR TO CONSTRUCTION AND ORDERING OF MATERIALS.
- SCHEDULES INCLUDED IN THE PLANS HAVE BEEN PREPARED FROM FIELD NOTES. EXACT LOCATIONS FOR PATCHING SHALL BE DETERMINED IN THE FIELD BY THE ENGINEER.
- ANY REFERENCE TO STANDARDS THROUGHOUT THE PLANS OR SPECIAL PROVISIONS SHALL BE INTERPRETED TO BE THE LATEST STANDARDS OF THE ILLINOIS DEPARTMENT OF TRANSPORTATION.
- THE THICKNESS OF HOT-MIX ASPHALT MIXTURE STATED IN THE SPECIFICATIONS IS THE NOMINAL THICKNESS. DEVIATIONS FROM THE NOMINAL THICKNESS WILL BE PERMITTED WHEN SUCH DEVIATIONS OCCUR DUE TO IRREGULARITIES IN THE EXISTING SURFACE OR BASE ON WHICH THE HOT-MIX ASPHALT SURFACE IS PLACED.
- ROBINSON ENGINEERING FIELD OFFICE SHALL BE NOTIFIED TWO (2) WORKING DAYS PRIOR TO CONSTRUCTION. CALL (708) 331-6700.
- WHEN, IN THE CONSTRUCTION OPERATION, ANY LOOSE MATERIAL IS DEPOSITED IN THE FLOW LINE OF DITCHES, GUTTERS OR OTHER DRAINAGE STRUCTURES SO THAT THE NATURAL FLOW OF WATER IS OBSTRUCTED, IT SHALL BE REMOVED AT THE CLOSE OF EACH DAY BY THE CONTRACTOR AT HIS EXPENSE. AT THE CONCLUSION OF THE CONSTRUCTION OPERATIONS, ALL DRAINAGE STRUCTURES SHALL BE FREE FROM ALL DIRT AND DEBRIS. THIS WORK SHALL NOT BE PAID FOR SEPARATELY BUT SHALL BE CONSIDERED INCIDENTAL TO THE CONTRACT.
- BACKFILLING AND RESTORATION OF AREAS ADJACENT TO SIDEWALK REMOVAL AND REPLACEMENT WILL NOT BE PAID FOR SEPARATELY BUT CONSIDERED INCIDENTAL TO THE CONTRACT.

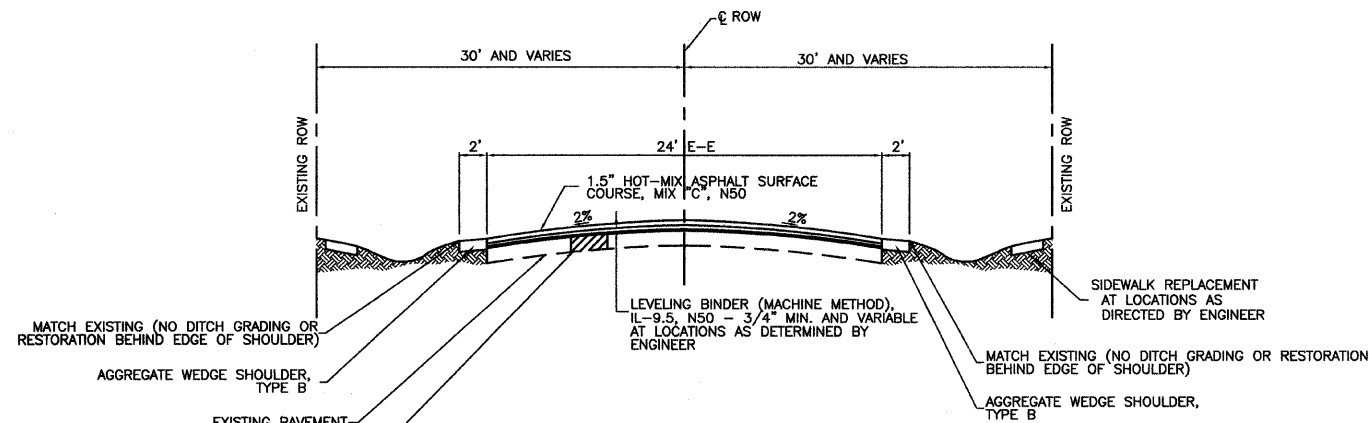
FILE NAME - 0923-QUAN-01 - 001	USER NAME =	DESIGNED - CMK	REVISED -	STATE OF ILLINOIS DEPARTMENT OF TRANSPORTATION	FAU 6288 (5TH STREET), FAU6290 (8TH STREET) AND FAU 6278 (ELM STREET) LOCAL AGENCY PAVEMENT PRESERVATION (LAPP) SUMMARY OF QUANTITIES & GENERAL NOTES	F.A.U. RTE.	SECTION	COUNTY	TOTAL SHEETS	SHEET NO.
		CHECKED - CMK	REVISED -			09-00059-00-RS	IRROUOIS	4	2	
	PLOT SCALE =	DRAWN - RG	REVISED -			CONTRACT NO. 87436				
	PLOT DATE = 07-13-09	CHECKED - RG	REVISED -			SCALE: NA	SHEET NO. 2 OF 4 SHEETS	STA. TO STA.	FED. ROAD DIST. NO. 3 ILLINOIS	FED. AID PROJECT ARA 9089(005)



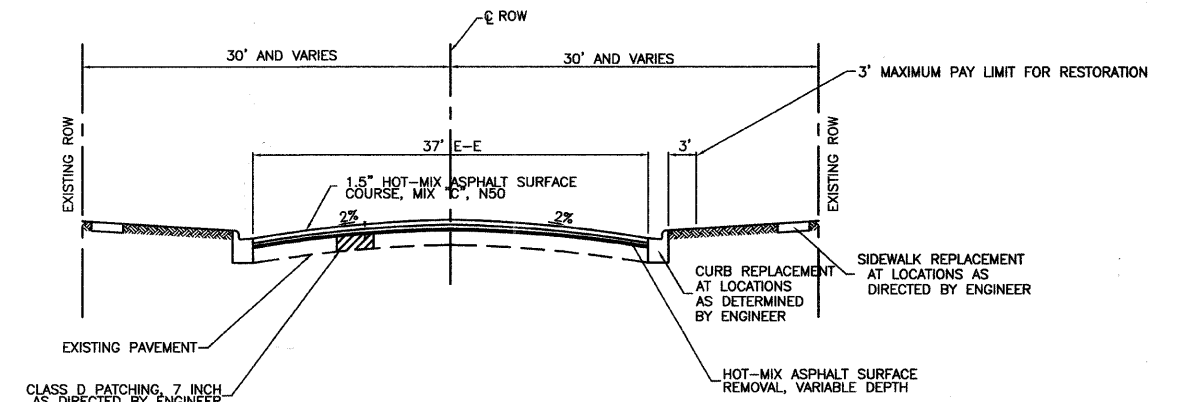
EXISTING TYPICAL CROSS SECTION
 ELM STREET: FROM THE WEST RADIUS RETURN AT 8TH STREET TO THE PAVEMENT JOINT 1645 FEET EAST
 8TH STREET: FROM THE SOUTH RADIUS RETURN AT EAST OAK STREET TO THE SOUTH EDGE OF PAVEMENT AT ELM STREET



EXISTING TYPICAL CROSS SECTION
 5TH STREET: FROM NORTH RADIUS RETURN AT WALNUT STREET TO THE SOUTH RADIUS RETURN AT OAK STREET
 5TH STREET: FROM SOUTH RADIUS RETURN AT ASH STREET TO THE SOUTH EDGE OF PAVEMENT AT ELM STREET



PROPOSED TYPICAL CROSS SECTION
 ELM STREET: FROM THE WEST RADIUS RETURN AT 8TH STREET TO THE PAVEMENT JOINT 1645 FEET EAST
 8TH STREET: FROM THE SOUTH RADIUS RETURN AT EAST OAK STREET TO THE SOUTH EDGE OF PAVEMENT AT ELM STREET



PROPOSED TYPICAL CROSS SECTION
 5TH STREET: FROM NORTH RADIUS RETURN AT WALNUT STREET TO THE SOUTH RADIUS RETURN AT OAK STREET
 5TH STREET: FROM SOUTH RADIUS RETURN AT ASH STREET TO THE SOUTH EDGE OF PAVEMENT AT ELM STREET

HOT-MIX ASPHALT MIX DESIGN CHART

	HMA BINDER (PATCHES)	HMA LEVEL BINDER	HMA SURFACE
PG GRADE	PG 64-22	PG 64-22	PG 64-22
DESIGN AIR VOIDS	4% @ N50	4% @ N50	4% @ N50
MIXTURE COMPOSITION	IL 19.0	IL 9.5	IL 12.5 OR IL 9.5
FRICTION AGGREGATE			
DENSITY TEST METHOD	CORES	SATISFACTION OF ENGINEER	CORES

THE UNIT WEIGHT USED TO CALCULATE ALL HMA SURFACE MIXTURE QUANTITIES IS 112 LBS/SQ YD/IN.
 *WHEN RAP EXCEEDS 20%, ASPHALT BINDER IN THE MIX SHALL BE PG 58-22.

SCHEDULE OF QUANTITIES

21101625	TOPSOIL FURNISH AND PLACE, 6"
5TH STREET - ALLEY TO ELM STREET	100 SQ YDS
TOTAL	100 SQ YDS
25200650	SODDING, SALT TOLERANT SPECIAL
5TH STREET - ALLEY TO ELM STREET	100 SQ YDS
TOTAL	100 SQ YDS
40600100	BITUMINOUS MATERIALS (PRIME COAT)
ELM STREET - 8TH STREET TO EAST LIMIT	440 GALLONS
8TH STREET - ELM STREET TO OAK STREET	336 GALLONS
5TH STREET - WALNUT STREET TO OAK STREET	103 GALLONS
5TH STREET - ASH STREET TO ALLEY	69 GALLONS
5TH STREET - ALLEY TO ELM STREET	192 GALLONS
TOTAL	1140 GALLONS
40600300	AGGREGATE (PRIME COAT)
ELM STREET - 8TH STREET TO EAST LIMIT	11 TONS
8TH STREET - ELM STREET TO OAK STREET	9 TONS
5TH STREET - WALNUT STREET TO OAK STREET	3 TONS
5TH STREET - ASH STREET TO ALLEY	2 TONS
5TH STREET - ALLEY TO ELM STREET	5 TONS
TOTAL	30 TONS
40600625	LEVELING BINDER (MACHINE METHOD), N50
ELM STREET - 8TH STREET TO EAST LIMIT	204 TONS
8TH STREET - ELM STREET TO OAK STREET	156 TONS
TOTAL	360 TONS
40600982	HOT-MIX ASPHALT SURFACE REMOVAL - BUTT JOINT
5TH STREET - ASH STREET TO ALLEY	200 SQ YDS
TOTAL	200 SQ YDS
40603310	HOT-MIX ASPHALT SURFACE COURSE, MIX "C", N50
ELM STREET - 8TH STREET TO EAST LIMIT	407 TONS
8TH STREET - ELM STREET TO OAK STREET	312 TONS
5TH STREET - WALNUT STREET TO OAK STREET	95 TONS
5TH STREET - ASH STREET TO ALLEY	62 TONS
5TH STREET - ALLEY TO ELM STREET	178 TONS
TOTAL	1054 TONS
42400800	DETECTABLE WARNINGS
8TH STREET - ELM STREET TO OAK STREET	16 SQ FT
5TH STREET - WALNUT STREET TO OAK STREET	24 SQ FT
5TH STREET - ASH STREET TO ALLEY	48 SQ FT
TOTAL	88 SQ FT
44000155	HOT-MIX ASPHALT SURFACE REMOVAL, 1 1/2"
ELM STREET - 8TH STREET TO EAST LIMIT	4400 SQ YD
8TH STREET - ELM STREET TO OAK STREET	3358 SQ YD
5TH STREET - WALNUT STREET TO OAK STREET	1028 SQ YD
5TH STREET - ASH STREET TO ALLEY	684 SQ YD
5TH STREET - ALLEY TO ELM STREET	1921 SQ YD
TOTAL	11391 SQ YD

44001700	COMBINATION CONCRETE CURB AND GUTTER REMOVAL AND REPLACEMENT
5TH STREET - ASH STREET TO ALLEY	35 FEET
5TH STREET - ALLEY TO ELM STREET	300 FEET
TOTAL	335 FEET
44201729	CLASS D PATCHES, TYPE II, 7 INCH
ELM STREET - 8TH STREET TO EAST LIMIT	10 SQ YD
8TH STREET - ELM STREET TO OAK STREET	12 SQ YD
5TH STREET - ASH STREET TO ALLEY	11 SQ YD
5TH STREET - ALLEY TO ELM STREET	16 SQ YD
TOTAL	49 SQ YD
44201733	CLASS D PATCHES, TYPE III, 7 INCH
ELM STREET - 8TH STREET TO EAST LIMIT	20 SQ YD
8TH STREET - ELM STREET TO OAK STREET	25 SQ YD
5TH STREET - ASH STREET TO ALLEY	22 SQ YD
5TH STREET - ALLEY TO ELM STREET	33 SQ YD
TOTAL	100 SQ YD
44201735	CLASS D PATCHES, TYPE IV, 7 INCH
ELM STREET - 8TH STREET TO EAST LIMIT	40 SQ YD
8TH STREET - ELM STREET TO OAK STREET	50 SQ YD
5TH STREET - ASH STREET TO ALLEY	45 SQ YD
5TH STREET - ALLEY TO ELM STREET	67 SQ YD
TOTAL	202 SQ YD
48102100	AGGREGATE WEDGE SHOULDER, TYPE B
ELM STREET - 8TH STREET TO EAST LIMIT	120 TONS
8TH STREET - ELM STREET TO OAK STREET	100 TONS
TOTAL	220 TONS
60250200	CATCH BASINS TO BE ADJUSTED
ELM STREET - 8TH STREET TO EAST LIMIT	1 EACH
5TH STREET - ASH STREET TO ALLEY	2 EACH
TOTAL	3 EACH
60250400	CATCH BASINS TO BE ADJUSTED WITH NEW TYPE 1 FRAME, OPEN LID
5TH STREET - ASH STREET TO ALLEY	1 EACH
TOTAL	1 EACH
60255500	MANHOLES TO BE ADJUSTED
ELM STREET - 8TH STREET TO EAST LIMIT	2 EACH
8TH STREET - ELM STREET TO OAK STREET	1 EACH
5TH STREET - ASH STREET TO ALLEY	3 EACH
TOTAL	6 EACH
60266600	VALVE BOXES TO BE ADJUSTED
ELM STREET - 8TH STREET TO EAST LIMIT	1 EACH
8TH STREET - ELM STREET TO OAK STREET	1 EACH
5TH STREET - ASH STREET TO ALLEY	2 EACH
TOTAL	4 EACH
XX001306	SIDEWALK REMOVAL AND REPLACEMENT
8TH STREET - ELM STREET TO OAK STREET	50 SQ FT
5TH STREET - WALNUT STREET TO OAK STREET	75 SQ FT
5TH STREET - ASH STREET TO ALLEY	150 SQ FT
5TH STREET - ALLEY TO ELM STREET	24 SQ FT
TOTAL	299 SQ FT