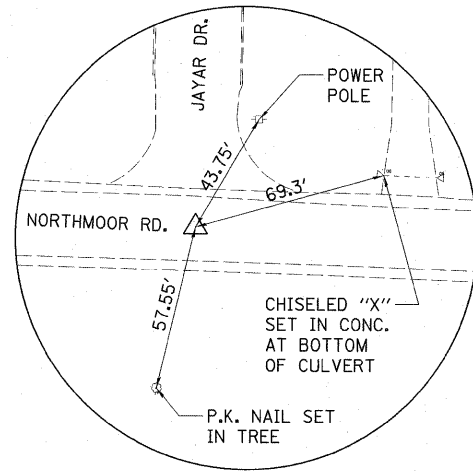
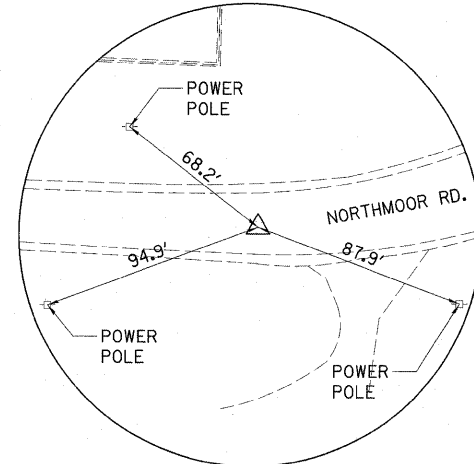


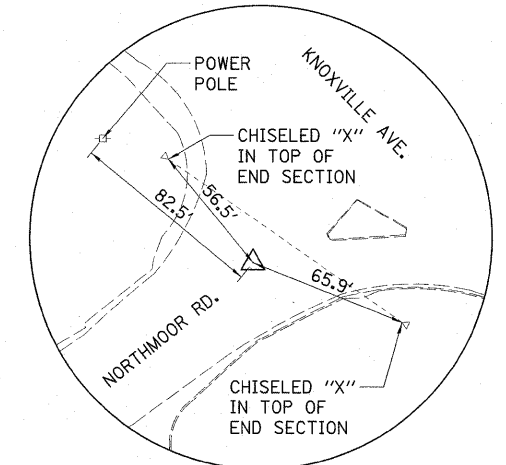
RECOVERY TIE - ϕ STA. 90+72.42
P.K. NAIL IN PAVEMENT



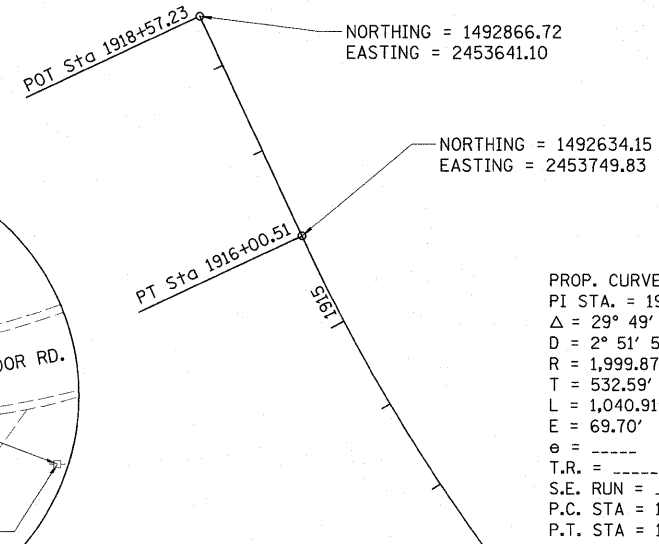
RECOVERY TIE - ϕ STA. 95+77.04
P.K. NAIL IN PAVEMENT



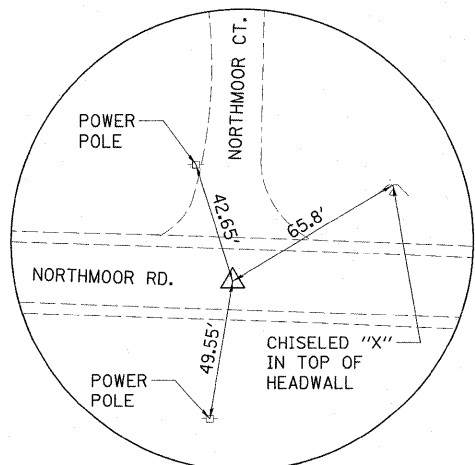
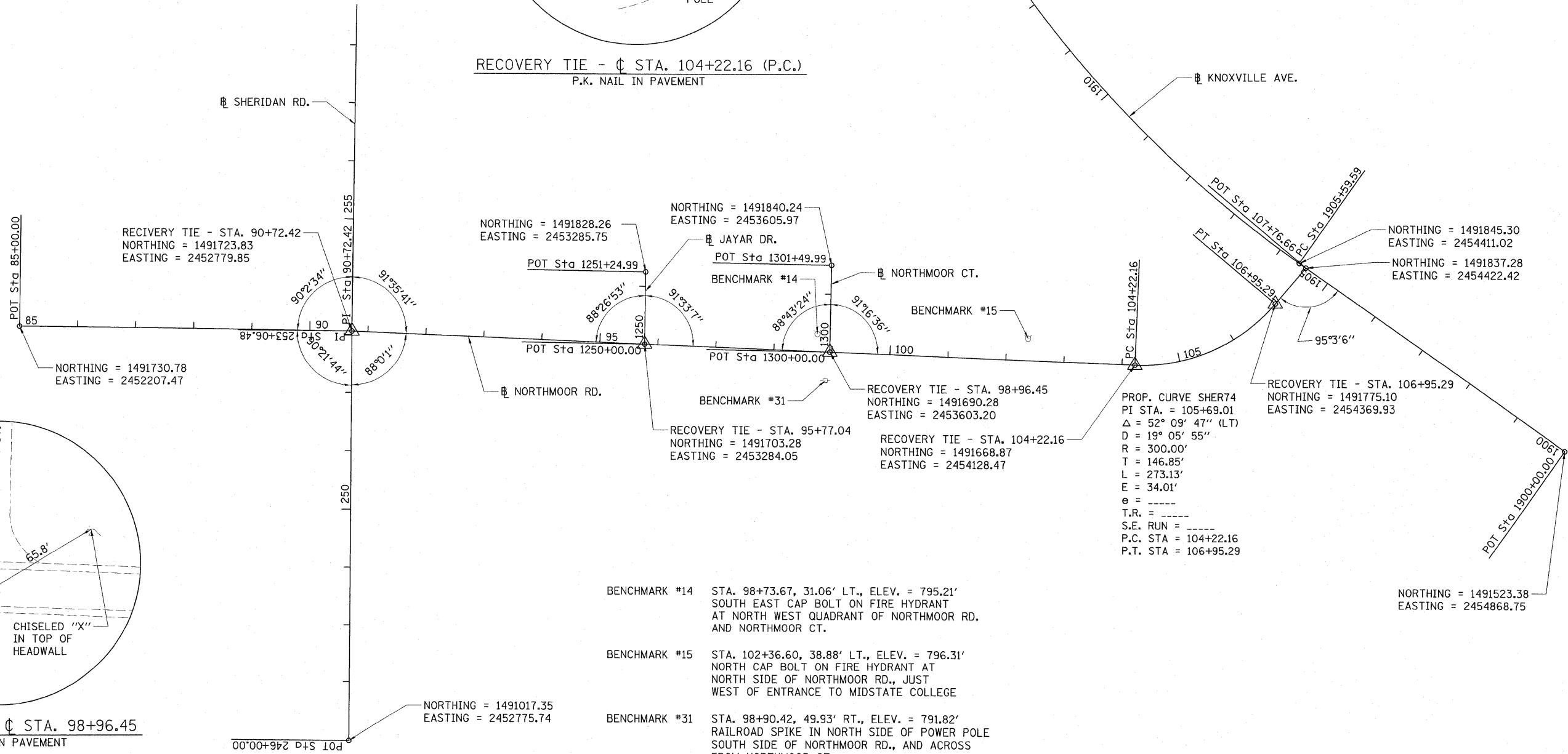
RECOVERY TIE - ϕ STA. 104+22.16 (P.C.)
P.K. NAIL IN PAVEMENT



RECOVERY TIE - ϕ STA. 106+95.29 (P.T.)
P.K. NAIL IN PAVEMENT



PROP. CURVE KNOCC01-1
PI STA. = 1910+92.19
 Δ = 29° 49' 30" (RT)
D = 2° 51' 55"
R = 1,999.87'
T = 532.59'
L = 1,040.91'
E = 69.70'
e = -----
T.R. = -----
S.E. RUN = -----
P.C. STA = 1905+59.59
P.T. STA = 1916+00.51



RECOVERY TIE - ϕ STA. 98+96.45
P.K. NAIL IN PAVEMENT

- BENCHMARK #14 STA. 98+73.67, 31.06' LT., ELEV. = 795.21'
SOUTH EAST CAP BOLT ON FIRE HYDRANT
AT NORTH WEST QUADRANT OF NORTHMOOR RD.
AND NORTHMOOR CT.
- BENCHMARK #15 STA. 102+36.60, 38.88' LT., ELEV. = 796.31'
NORTH CAP BOLT ON FIRE HYDRANT AT
NORTH SIDE OF NORTHMOOR RD., JUST
WEST OF ENTRANCE TO MIDSTATE COLLEGE
- BENCHMARK #31 STA. 98+90.42, 49.93' RT., ELEV. = 791.82'
RAILROAD SPIKE IN NORTH SIDE OF POWER POLE
SOUTH SIDE OF NORTHMOOR RD., AND ACROSS
FROM NORTHMOOR CT.

FILE NAME = I:\09\Jobs\09L00278\CADD\Road\Sheet\0-10\0-10.dwg	USER NAME = Ander-00846	DESIGNED - RLA	REVISED -	STATE OF ILLINOIS DEPARTMENT OF TRANSPORTATION	ALIGNMENT, BENCHMARK, AND TIES PLAN	F.A.U. RTE.	SECTION	COUNTY	TOTAL SHEETS	SHEET NO.
PLDT SCALE = 100.0000' / 1" =	DRAWN - RLA	REVISED -	6647			08-00302-00-PV	PEORIA	85	8	
PLDT DATE = 11/05/2009	CHECKED - CAL	REVISED -	CONTRACT NO. 89526							
DATE = 10/16/2009	DATE = 10/16/2009	REVISED -	FED. ROAD DIST. NO. ILLINOIS FED. AID PROJECT ARA-M-5093(139)							