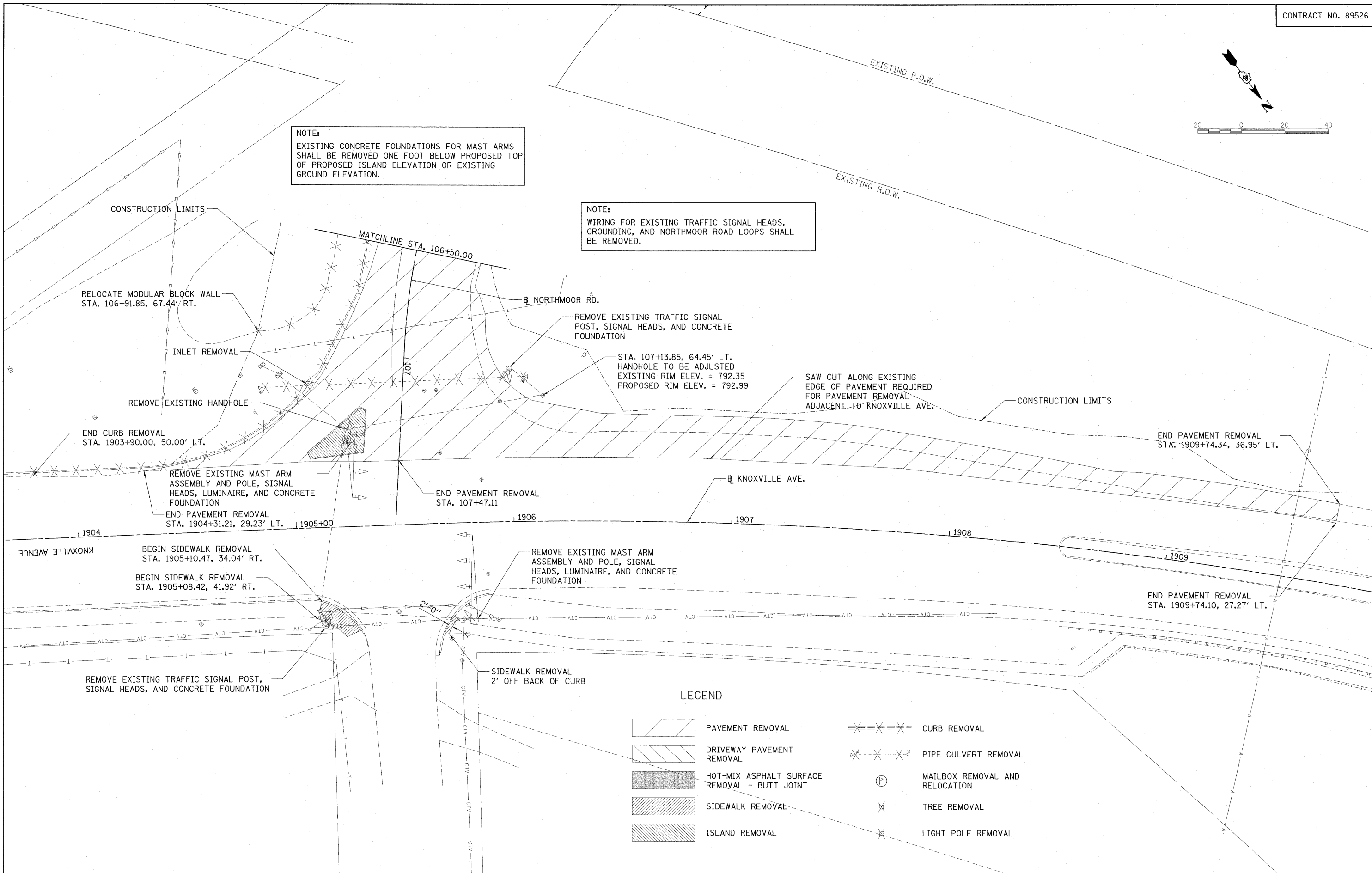


NOTE:  
EXISTING CONCRETE FOUNDATIONS FOR MAST ARMS SHALL BE REMOVED ONE FOOT BELOW PROPOSED TOP OF PROPOSED ISLAND ELEVATION OR EXISTING GROUND ELEVATION.

NOTE:  
WIRING FOR EXISTING TRAFFIC SIGNAL HEADS, GROUNDING, AND NORTHMOOR ROAD LOOPS SHALL BE REMOVED.



© Copyright Hanson Professional Services Inc. 2009  
**HANSON**  
Hanson Professional Services Inc.

**LEGEND**

- |  |  |  |                                |
|--|--|--|--------------------------------|
|  | PAVEMENT REMOVAL                             |  | CURB REMOVAL                   |
|  | DRIVEWAY PAVEMENT REMOVAL                    |  | PIPE CULVERT REMOVAL           |
|  | HOT-MIX ASPHALT SURFACE REMOVAL - BUTT JOINT |  | MAILBOX REMOVAL AND RELOCATION |
|  | SIDEWALK REMOVAL                             |  | TREE REMOVAL                   |
|  | ISLAND REMOVAL                               |  | LIGHT POLE REMOVAL             |

FILE NAME =	USER NAME = Ander08846	DESIGNED - RLA	REVISED -
I:\29\Jobs\09\10027B\CADD\Road\Sheet\0-10.dwg		DRAWN - RLA	REVISED -
PLOT SCALE = 20.0000' / 1"		CHECKED - CAL	REVISED -
PLOT DATE = 11/17/2009		DATE - 10/16/2009	REVISED -

**STATE OF ILLINOIS  
DEPARTMENT OF TRANSPORTATION**

<b>NORTHMOOR RD. REMOVAL PLAN</b>			
SCALE: 1"=20'	SHEET NO. OF SHEETS	STA. 106+50.00 TO STA. 107+76.66	

F.A.U. RTE.	SECTION	COUNTY	TOTAL SHEETS	SHEET NO.
6647	08-00302-00-PV	PEORIA	85	17
	09-00047-01-PV			
FED. ROAD DIST. NO.	ILLINOIS FED. AID PROJECT	ARA-M-5093(139)	CONTRACT NO. 89526	