

LEGEND - DRIVEWAYS

- PORTLAND CEMENT CONCRETE DRIVEWAY PAVEMENT, 6"
- PORTLAND CEMENT CONCRETE DRIVEWAY PAVEMENT, 8"
- INCIDENTAL HOT-MIX ASPHALT SURFACING
- AGGREGATE SURFACE COURSE, TYPE A
- DETECTABLE WARNING

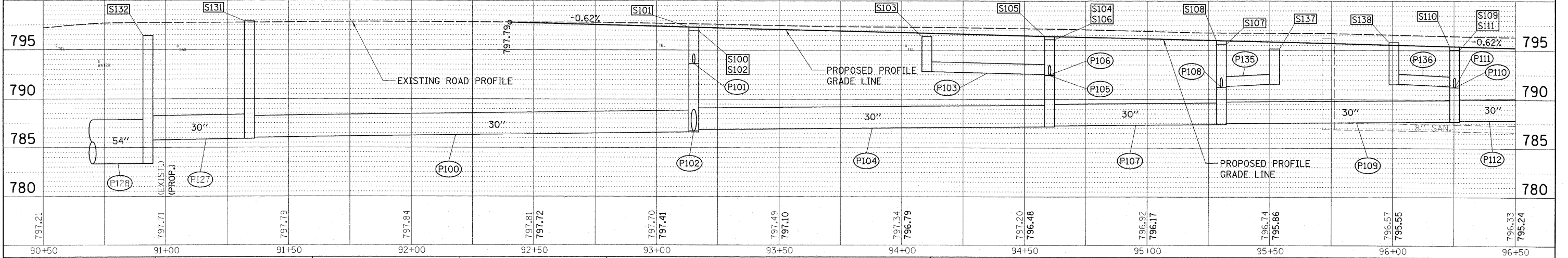
LEGEND

- S100 STORM STRUCTURE
- P100 STORM SEWER



STRUCTURE NUMBER	STATION	OFFSET	TYPE	RIM ELEVATION				INVERT ELEVATIONS					
				ELEVATION	N	S	E	N	S	E	W		
S100	93+15.00	19.25	LT. INLETS, TYPE G-1	796.96		793.38							
S101	93+15.00	0.00	MANHOLES, TYPE A, 5-DIAMETER, TYPE 1 FRAME, CLOSED LID	797.32	793.19	786.76	786.86						
S102	93+15.00	19.25	RT. CATCH BASINS, TYPE G-1 (SEE SPECIAL PROVISION)	796.96	786.72		786.62						
S103	94+10.00	18.25	LT. INLETS, TYPE G-1	796.39			792.81						
S104	94+60.00	18.25	LT. INLETS, TYPE G-1	796.08			792.45			792.55			
S105	94+60.00	0.00	MANHOLES, TYPE A, 4-DIAMETER, TYPE 1 FRAME, CLOSED LID	796.42	792.30	790.19	787.25	787.15					
S106	94+60.00	18.25	RT. INLETS, TYPE G-1	796.08	790.39								
S107	95+30.00	18.25	LT. INLETS, TYPE G-1	795.64			791.33						
S108	95+30.00	0.00	MANHOLES, TYPE A, 4-DIAMETER, TYPE 1 FRAME, CLOSED LID	795.98	791.08		787.49	787.39					
S109	96+25.00	18.25	LT. INLETS, TYPE G-1	795.05			791.24			791.34			
S110	96+25.00	0.00	MANHOLES, TYPE A, 4-DIAMETER, TYPE 1 FRAME, CLOSED LID	795.39	791.09	789.54	787.78	787.68					
S111	96+25.00	18.25	RT. INLETS, TYPE G-1	795.05	789.73								
S131	91+33.82	27.59	RT. INLET-MANHOLE, TYPE G-1, 4' DIAMETER	796.37	796.00		786.00	785.90					
S132	252+50.00	28.14	RT. INLET-MANHOLE, TYPE G-1, 4' DIAMETER	796.42	785.75	783.35							
S137	95+51.70	27.58	LT. INLETS, TYPE G-1	795.15			791.57						
S138	96+00.31	27.00	LT. INLETS, TYPE G-1	795.18				791.60					

PIPE NUMBER	FROM STRUCTURE	U/S INVERT	TO STRUCTURE	D/S INVERT	CLASS/TYPE	DIAMETER	LENGTH	SLOPE	TRENCH BACKFILL
P100	S102	786.62	S131	786.00	STORM SEWER (WATER MAIN REQUIREMENTS)	30"	177.0'	0.35%	339.7'
P101	S100	793.38	S101	793.19	STORM SEWERS, TYPE 2, REINFORCED CONCRETE CULVERT, STORM DRAIN, AND SEWER PIPE, CLASS III	12"	15.5'	1.23%	5.0'
P102	S101	786.76	S102	786.72	STORM SEWER (WATER MAIN REQUIREMENTS)	30"	14.5'	0.28%	27.9'
P103	S103	792.81	S104	792.55	STORM SEWERS, TYPE 1, REINFORCED CONCRETE CULVERT, STORM DRAIN, AND SEWER PIPE, CLASS IV	12"	47.0'	0.55%	14.1'
P104	S105	787.15	S101	786.86	STORM SEWERS, TYPE 2, REINFORCED CONCRETE CULVERT, STORM DRAIN, AND SEWER PIPE, CLASS III	30"	140.5'	0.21%	251.2'
P105	S104	792.45	S105	792.30	STORM SEWERS, TYPE 2, REINFORCED CONCRETE CULVERT, STORM DRAIN, AND SEWER PIPE, CLASS III	12"	15.0'	1.00%	4.8'
P106	S106	790.39	S105	790.19	STORM SEWER (WATER MAIN REQUIREMENTS)	12"	15.0'	1.33%	12.8'
P107	S108	787.39	S105	787.25	STORM SEWERS, TYPE 2, REINFORCED CONCRETE CULVERT, STORM DRAIN, AND SEWER PIPE, CLASS III	30"	66.0'	0.21%	103.2'
P108	S107	791.23	S108	791.08	STORM SEWERS, TYPE 2, REINFORCED CONCRETE CULVERT, STORM DRAIN, AND SEWER PIPE, CLASS III	12"	15.0'	1.00%	9.5'
P109	S110	787.68	S108	787.49	STORM SEWERS, TYPE 2, REINFORCED CONCRETE CULVERT, STORM DRAIN, AND SEWER PIPE, CLASS III	30"	91.0'	0.21%	129.9'
P110	S109	791.24	S110	791.09	STORM SEWERS, TYPE 2, REINFORCED CONCRETE CULVERT, STORM DRAIN, AND SEWER PIPE, CLASS III	12"	15.0'	1.00%	5.1'
P111	S111	789.73	S110	789.54	STORM SEWER (WATER MAIN REQUIREMENTS)	12"	15.0'	1.27%	11.9'
P112	S113	788.04	S110	787.78	STORM SEWERS, TYPE 2, REINFORCED CONCRETE CULVERT, STORM DRAIN, AND SEWER PIPE, CLASS III	30"	126.0'	0.21%	145.8'
P127	S131	785.90	S132	785.75	STORM SEWERS, TYPE 2, REINFORCED CONCRETE CULVERT, STORM DRAIN, AND SEWER PIPE, CLASS III	30"	37.5'	0.40%	77.2'
P128	S132	783.35	S133	783.27	STORM SEWERS, TYPE 2, REINFORCED CONCRETE CULVERT, STORM DRAIN, AND SEWER PIPE, CLASS III	54"	76.5'	0.10%	223.8'
P135	S137	791.57	S107	791.33	STORM SEWERS, TYPE 2, REINFORCED CONCRETE CULVERT, STORM DRAIN, AND SEWER PIPE, CLASS III	12"	20.5'	1.17%	7.0'
P136	S138	791.60	S109	791.34	STORM SEWERS, TYPE 1, REINFORCED CONCRETE CULVERT, STORM DRAIN, AND SEWER PIPE, CLASS IV	12"	23.0'	1.13%	6.9'
P145	CAP	793.14	S103	792.91	STORM SEWERS, TYPE 2, REINFORCED CONCRETE CULVERT, STORM DRAIN, AND SEWER PIPE, CLASS III	12"	23.0'	1.00%	7.8'



DATE: _____ BY: _____
 PLAN NO. _____
 CHECKED BY: _____
 DATE: _____

HANSON
 Hanson Professional Services Inc.

DATE: _____ BY: _____
 PROFILE NO. _____
 CHECKED BY: _____
 DATE: _____