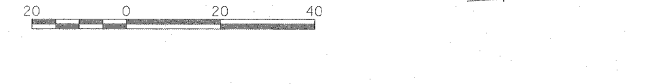


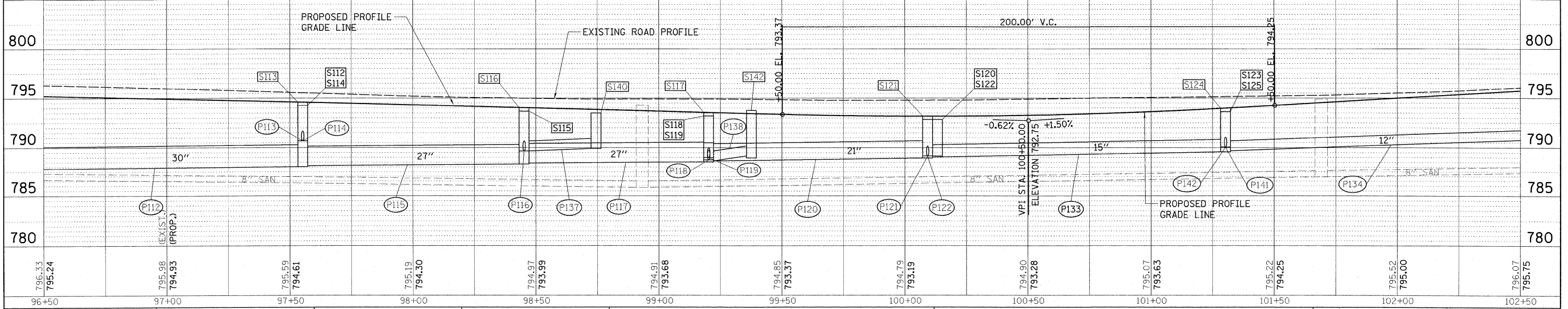
**LEGEND**  
 S100 STORM STRUCTURE  
 P100 STORM SEWER



**LEGEND - DRIVEWAYS**  
 PORTLAND CEMENT CONCRETE DRIVEWAY PAVEMENT, 6"  
 PORTLAND CEMENT CONCRETE DRIVEWAY PAVEMENT, 8"  
 INCIDENTAL HOT-MIX ASPHALT SURFACING  
 AGGREGATE SURFACE COURSE, TYPE A  
 DETECTABLE WARNING

PIPE NUMBER	FROM STRUCTURE	U/S INVERT	TO STRUCTURE	D/S INVERT	CLASS/TYPE	DIAMETER	LENGTH	SLOPE	TRENCH BACKFILL
P112	S113	788.04	S110	787.78	STORM SEWERS, TYPE 2, REINFORCED CONCRETE CULVERT, STORM DRAIN, AND SEWER PIPE, CLASS III	30	126.0	0.21%	145.8
P113	S112	790.66	S113	790.47	STORM SEWERS, TYPE 2, REINFORCED CONCRETE CULVERT, STORM DRAIN, AND SEWER PIPE, CLASS III	12	15.0	1.27%	4.8
P114	S114	788.74	S113	788.55	STORM SEWER (WATER MAIN REQUIREMENTS)	12	15.0	1.27%	12.4
P115	S116	788.32	S113	788.14	STORM SEWERS, TYPE 2, REINFORCED CONCRETE CULVERT, STORM DRAIN, AND SEWER PIPE, CLASS III	27	86.0	0.21%	80.2
P116	S115	789.66	S116	789.51	STORM SEWERS, TYPE 2, REINFORCED CONCRETE CULVERT, STORM DRAIN, AND SEWER PIPE, CLASS III	12	15.0	1.00%	5.4
P117	S117	788.57	S116	788.42	STORM SEWERS, TYPE 2, REINFORCED CONCRETE CULVERT, STORM DRAIN, AND SEWER PIPE, CLASS III	27	71.0	0.21%	57.0
P118	S118	788.77	S117	788.67	STORM SEWER (WATER MAIN REQUIREMENTS)	12	15.0	0.67%	9.5
P119	S119	789.00	S118	788.87	STORM SEWERS, TYPE 2, REINFORCED CONCRETE CULVERT, STORM DRAIN, AND SEWER PIPE, CLASS III	12	24.0	0.54%	5.7
P120	S121	788.95	S117	788.67	STORM SEWERS, TYPE 2, REINFORCED CONCRETE CULVERT, STORM DRAIN, AND SEWER PIPE, CLASS III	21	85.0	0.33%	55.0
P121	S120	789.14	S121	788.98	STORM SEWERS, TYPE 1, REINFORCED CONCRETE CULVERT, STORM DRAIN, AND SEWER PIPE, CLASS IV	15	15.5	1.03%	5.5
P122	S122	789.14	S121	789.05	STORM SEWER (WATER MAIN REQUIREMENTS)	12	15.5	0.58%	5.3
P123	S139	791.00	S115	790.72	STORM SEWERS, TYPE 1, REINFORCED CONCRETE CULVERT, STORM DRAIN, AND SEWER PIPE, CLASS IV	12	26.0	1.08%	4.0
P133	S124	789.58	S121	789.05	STORM SEWERS, TYPE 2, REINFORCED CONCRETE CULVERT, STORM DRAIN, AND SEWER PIPE, CLASS III	15	117.0	0.45%	43.9
P134	S127	791.49	S124	789.68	STORM SEWERS, TYPE 2, REINFORCED CONCRETE CULVERT, STORM DRAIN, AND SEWER PIPE, CLASS III	12	196.0	0.92%	123.9
P137	S140	789.92	S115	789.76	STORM SEWERS, TYPE 1, REINFORCED CONCRETE CULVERT, STORM DRAIN, AND SEWER PIPE, CLASS IV	12	27.5	0.58%	8.8
P138	S142	788.97	S117	788.67	STORM SEWERS, TYPE 2, REINFORCED CONCRETE CULVERT, STORM DRAIN, AND SEWER PIPE, CLASS III	12	26.5	1.13%	9.0
P139	CULVERT	790.84	S142	789.17	STORM SEWERS, CLASS B, TYPE 2"	10	23.5	7.11%	4.1
P140	S141	790.30	S142	789.17	STORM SEWERS, TYPE 2, REINFORCED CONCRETE CULVERT, STORM DRAIN, AND SEWER PIPE, CLASS III	12	21.0	5.38%	5.0
P141	S123	790.05	S124	789.90	STORM SEWERS, TYPE 2, REINFORCED CONCRETE CULVERT, STORM DRAIN, AND SEWER PIPE, CLASS III	12	15.0	1.00%	4.8
P142	S125	790.05	S124	789.90	STORM SEWER (WATER MAIN REQUIREMENTS)	12	15.0	1.00%	4.8

STRUCTURE NUMBER	STATION	OFFSET	TYPE	RIM ELEVATION	INVERT ELEVATIONS				
					N	S	E	W	EGL
S112	97+55.00	18.25	LT. INLETS, TYPE G-1	794.24		790.66			790.99
S113	97+55.00	0.00	MANHOLES, TYPE A, 4-DIAMETER, TYPE 1 FRAME, CLOSED LID	794.58	790.47	788.55	788.14	788.04	789.94
S114	97+55.00	18.25	RT. INLETS, TYPE G-1	794.24		788.74			789.65
S115	98+45.00	18.25	LT. INLETS, TYPE G-1	793.68		790.72	789.66	789.76	790.60
S116	98+45.00	0.00	MANHOLES, TYPE A, 4-DIAMETER, TYPE 1 FRAME, CLOSED LID	794.02	789.51		788.42	788.32	790.27
S117	99+20.00	0.00	CATCH BASINS, TYPE G-1 (SEE SPECIAL PROVISION)	793.56	788.67	788.67	788.67	788.57	790.36
S118	99+20.00	18.25	RT. INLETS, TYPE G-1	793.22		788.77			790.34
S119	99+20.00	44.25	RT. INLETS, TYPE A, TYPE 8 GRATE	791.11		789.00			790.37
S120	100+13.00	18.25	LT. INLETS, TYPE G-1, DOUBLE	792.84		789.14	789.24		790.71
S121	100+09.00	0.00	MANHOLES, TYPE A, 4-DIAMETER, TYPE 1 FRAME, CLOSED LID	793.18	788.98	789.05	789.05	788.95	790.56
S122	100+13.00	18.25	RT. INLETS, TYPE G-1, DOUBLE	792.84		789.14	789.24		790.33
S123	101+30.00	18.25	LT. INLETS, TYPE G-1	793.63		790.05			790.47
S124	101+30.00	0.00	MANHOLES, TYPE A, 4-DIAMETER, TYPE 1 FRAME, CLOSED LID	793.97	789.90	789.68	789.58	789.52	790.62
S125	101+30.00	18.25	RT. INLETS, TYPE G-1	793.63		790.05			790.47
S139	98+45.00	46.32	LT. INLETS, TYPE A, TYPE 8 GRATE	792.50		791.00			791.82
S140	98+74.24	27.09	LT. INLETS, TYPE G-1	793.25				789.92	790.32
S141	99+20.68	42.20	LT. INLETS, TYPE A, TYPE 8 GRATE	791.80		790.30			790.49
S142	99+37.36	24.91	LT. MANHOLES, TYPE A, 4-DIAMETER, TYPE 1 FRAME, CLOSED LID	793.77		788.97	789.17		790.17



DATE: \_\_\_\_\_  
 BY: \_\_\_\_\_  
 CHECKED: \_\_\_\_\_  
 DESIGNED: \_\_\_\_\_  
 DRAWN: \_\_\_\_\_  
 PLOT SCALE = 1"=20'  
 PLOT DATE = 11/05/2009

**HANSON**  
 Professional Services Inc.

DATE: \_\_\_\_\_  
 BY: \_\_\_\_\_  
 CHECKED: \_\_\_\_\_  
 DESIGNED: \_\_\_\_\_  
 DRAWN: \_\_\_\_\_  
 PLOT SCALE = 1"=20'  
 PLOT DATE = 11/05/2009

**STATE OF ILLINOIS**  
**DEPARTMENT OF TRANSPORTATION**

**NORTHMOOR RD. PLAN AND PROFILE**

F.A.U. RTE. 6647	SECTION 08-00302-00-PV	COUNTY PEORIA	TOTAL SHEETS 85	SHEET NO. 20
09-00047-01-PV		CONTRACT NO. 89526		
FED. ROAD DIST. NO. ILLINOIS		FED. AID PROJECT ARA-M-5093(139)		

SCALE: 1"=20' SHEET NO. OF SHEETS STA. 96+50.00 TO STA. 102+50.00