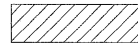
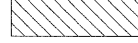

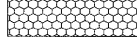

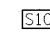

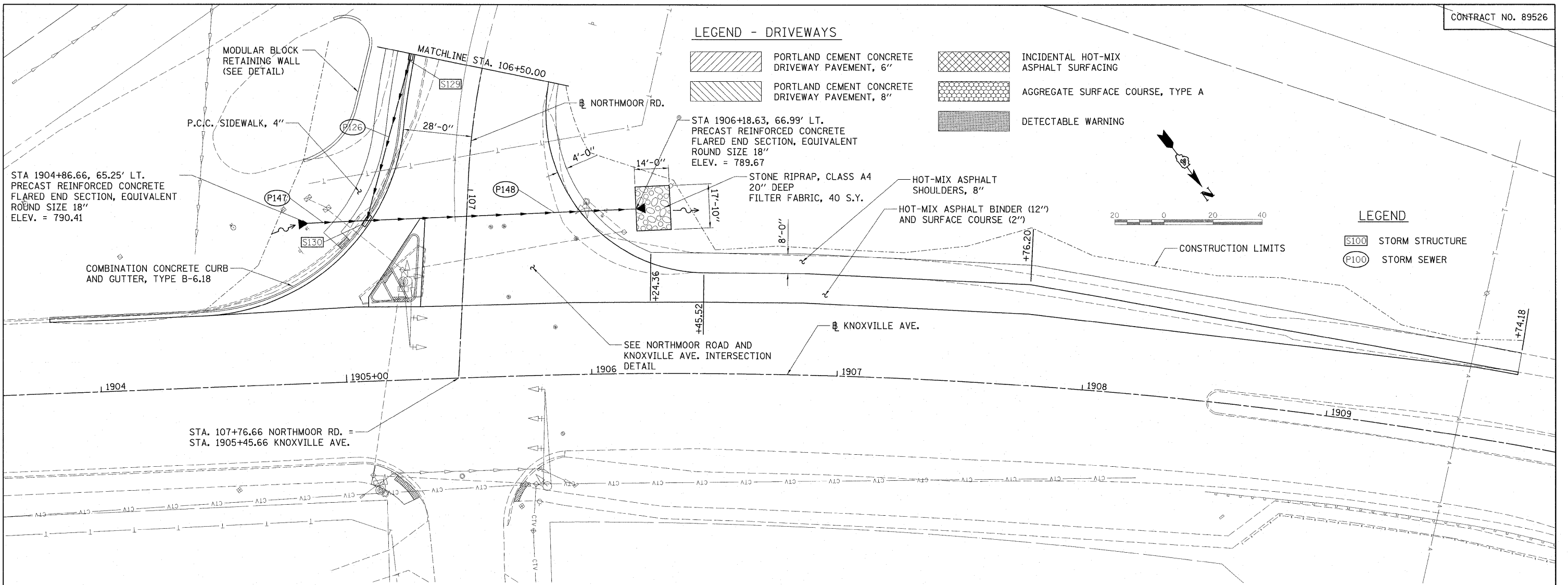


LEGEND - DRIVEWAYS

-  PORTLAND CEMENT CONCRETE DRIVEWAY PAVEMENT, 6"
-  PORTLAND CEMENT CONCRETE DRIVEWAY PAVEMENT, 8"
-  INCIDENTAL HOT-MIX ASPHALT SURFACING
-  AGGREGATE SURFACE COURSE, TYPE A
-  DETECTABLE WARNING

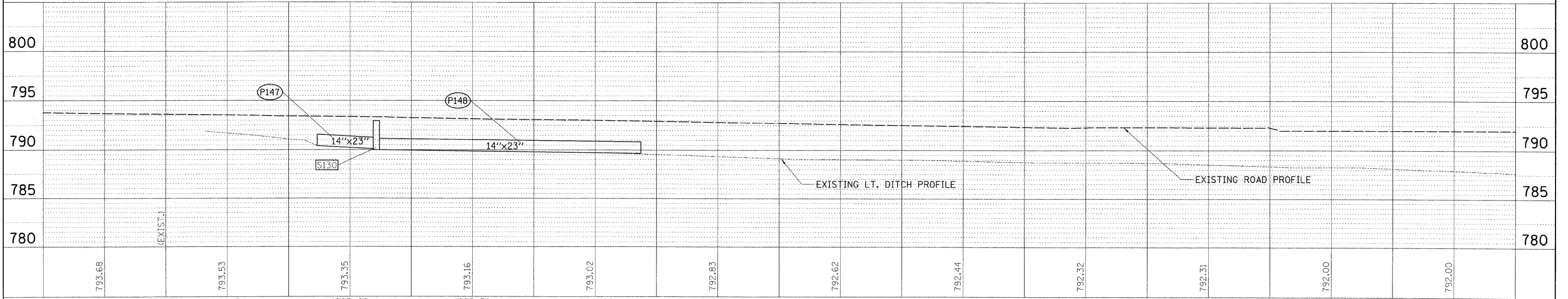
LEGEND

-  S100 STORM STRUCTURE
-  P100 STORM SEWER



STRUCTURE NUMBER	STATION	OFFSET	TYPE	RIM ELEVATION	INVERT ELEVATIONS			
					N	S	E	W
S129	106+50.00	29.25	RT.	794.90			791.11	
S130	107+14.57	40.28	RT.	792.96	790.00	789.90	790.00	

PIPE NUMBER	FROM STRUCTURE	U/S INVERT	TO STRUCTURE	D/S INVERT	CLASS/TYPE	DIAMETER	LENGTH	SLOPE	TRENCH BACKFILL
P147	CULVERT	790.41	S130	790.10	STORM SEWERS, TYPE 1, REINFORCED CONCRETE ELLIPTICAL PIPE, SPAN 23, RISE 14	14x23	22.5	1.37%	1.6
P148	S130	790.00	OUTLET	789.67	STORM SEWERS, TYPE 2, REINFORCED CONCRETE ELLIPTICAL PIPE, SPAN 23, RISE 14	14x23	108.5	0.30%	28.6



DATE: _____
 BY: _____
 SURVEYED: _____
 ALIGNED: _____
 CHECKED: _____
 PLAN: _____
 NO. _____

© Copyright Hanson Professional Services Inc. 2009
HANSON
 Hanson Professional Services Inc.

DATE: _____
 BY: _____
 SURVEYED: _____
 GRADES CHECKED: _____
 PROFILE: _____
 NO. _____