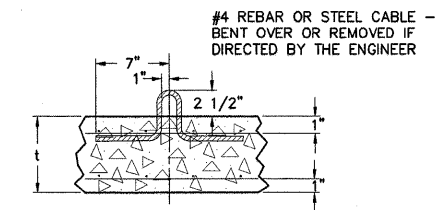
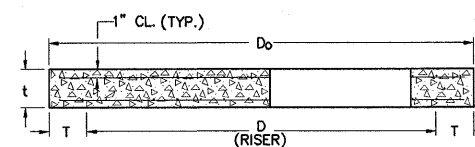


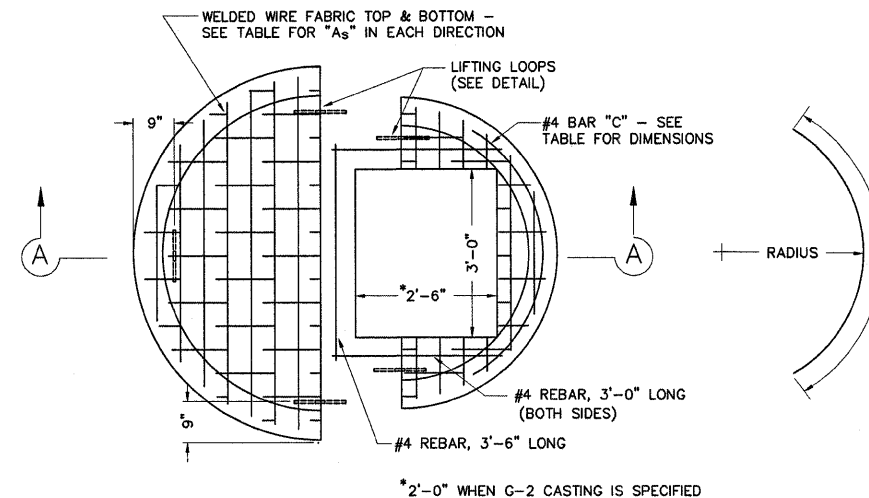
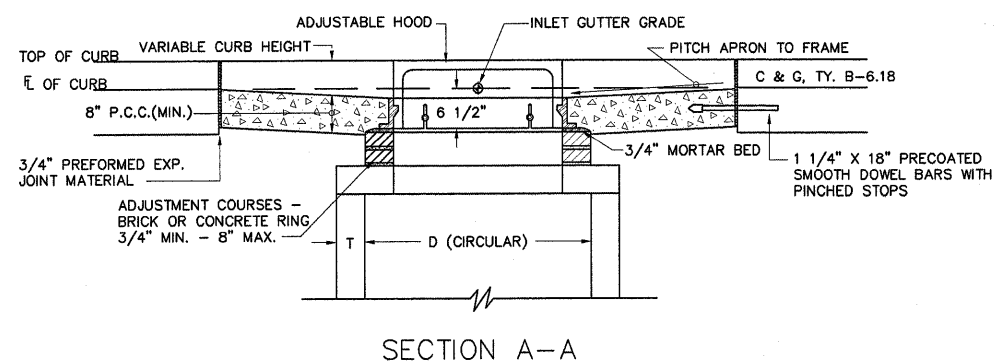
D	T	D ₀	t	REINFORCEMENT		BAR "C"	
				A _s W W F E.A. DIRECTION	LENGTH	RADIUS	
4'-0"	5"	4'-10"	6"	.70 SQ. IN./LIN. FT.	4'-6"	2'-2"	
5'-0"	6"	6'-0"	8"	.70 SQ. IN./LIN. FT.	5'-0"	2'-8"	
6'-0"	6"	7'-0"	8"	1.06 SQ. IN./LIN. FT.	6'-0"	3'-2"	



DIMENSION TABLE

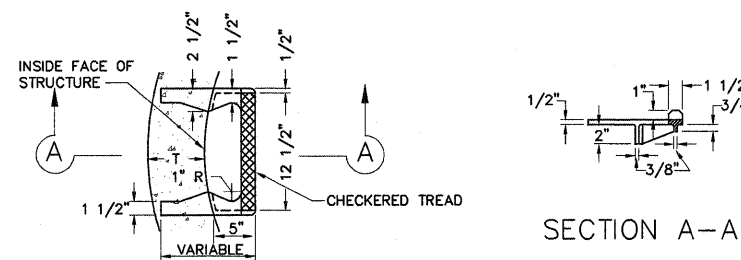
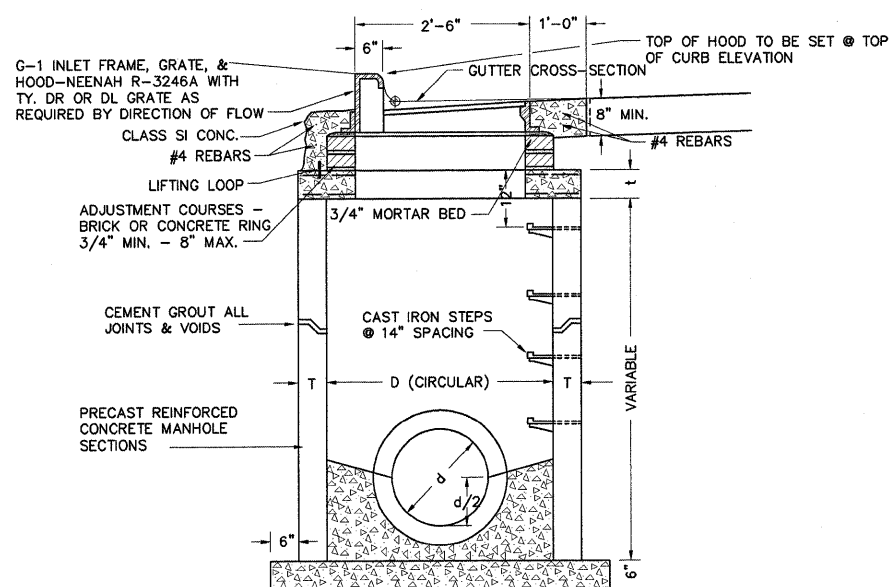
SECTION A-A

LIFTING LOOP DETAIL



SECTION A-A

PRECAST REINFORCED CONCRETE
FLAT SLAB TOP (4', 5' & 6' DIA.)



SECTION B-B

CAST IRON STEPS SHALL BE GRAY IRON CONFORMING TO THE REQUIREMENTS OF ARTICLE 706.14 OF THE STANDARD SPECIFICATIONS.

CAST IRON STEPS

GENERAL NOTES

ALL CONCRETE USED FOR CONSTRUCTION OF THE INLET-MANHOLE SHALL BE CLASS SI CONCRETE.
 THIS ITEM SHALL INCLUDE THE INLET-MANHOLE (4', 5' OR 6' DIA.), COMPLETE IN PLACE AS INDICATED HEREIN, INCLUDING INLET CASTINGS, PRECAST REINFORCED CONCRETE MANHOLE RINGS, REINFORCING BARS, STEPS, ADJUSTING COURSES, CLASS SI CONCRETE, GUTTER APRON, TRENCH BACKFILL AND ALL NECESSARY EXCAVATION.
 ARTICLE 602.15 OF THE SPECIFICATIONS SHALL NOT APPLY, THIS ITEM SHALL BE PAID FOR AT THE CONTRACT UNIT PRICE FOR INLET-MANHOLE (4', 5' OR 6' DIA.), AS SPECIFIED, WHICH SHALL BE PAYMENT IN FULL FOR ALL LABOR, MATERIALS, TOOLS AND EQUIPMENT NECESSARY TO CONSTRUCT THIS ITEM AS INDICATED.

CITY STANDARD INLET-MANHOLE, TYPE G-1
(4', 5' & 6' DIAMETERS)

© Copyright Hanson Professional Services Inc. 2009
HANSON
 Hanson Professional Services Inc.

FILE NAME = I:\09\Jobs\09L0027B\CADD\Road\Sheet\c-504det.dgn	USER NAME = Ander00846	DESIGNED - MPB	REVISED -	STATE OF ILLINOIS DEPARTMENT OF TRANSPORTATION	DRAINAGE DETAILS	F.A.U. RTE. 6647	SECTION 08-00302-00-PV	COUNTY PEORIA	TOTAL SHEETS 85	SHEET NO. 57	
PLOT SCALE = 5.0000' / 1"	CHECKED - CAL	DATE - 10/16/2009	REVISED -			SCALE: N.T.S	SHEET NO. OF SHEETS STA. TO STA.	FED. ROAD DIST. NO. ILLINOIS	FED. AID PROJECT ARA-M-50931391	CONTRACT NO. 89526	