

FOR INDEX OF SHEETS SEE SHEET NO. 2  
 FOR LIST OF STANDARDS, SEE SHEET NO. 2  
 SEE TYPICAL SECTIONS FOR STRUCTURAL PAVEMENT INFORMATION

F.A.U. RTE.	SECTION	COUNTY	TOTAL SHEETS	SHEET NO.
6548	09-00008-00-RS	PEORIA	12	1
FED. ROAD DIST. NO. 4 ILLINOIS		CONTRACT NO. 89548		

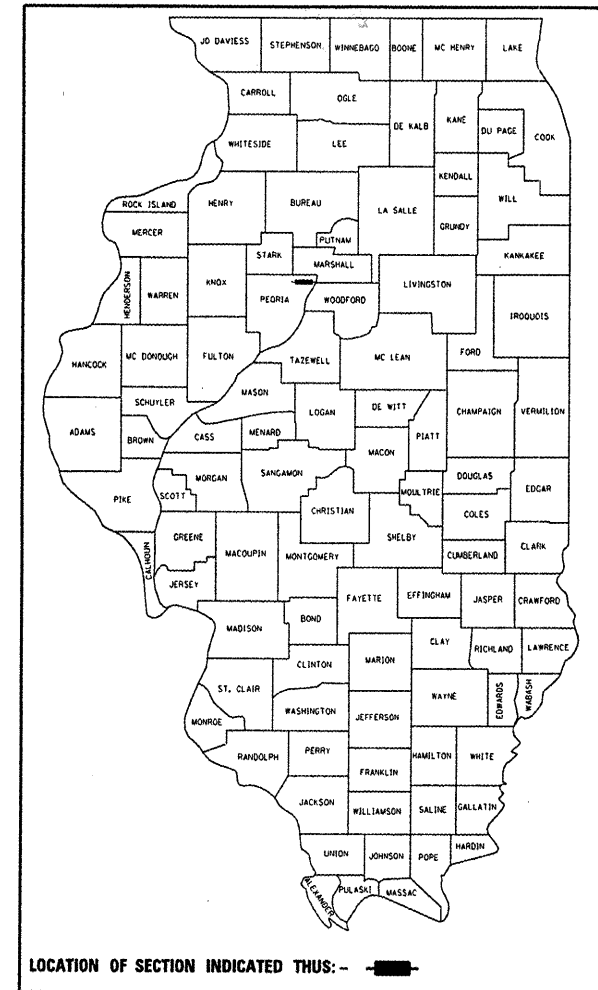
**STATE OF ILLINOIS**  
**DEPARTMENT OF TRANSPORTATION**  
**DIVISION OF HIGHWAYS**  
**PLANS FOR PROPOSED**  
**AMERICAN RECOVERY**  
**AND REINVESTMENT ACT**

**PROJECT ARA-5093 (149)**  
**SECTION 09-00008-00-RS**  
**PEORIA COUNTY**  
**CITY OF CHILlicothe - TRUITT STREET**  
**PATCHING, MILLING AND RESURFACING**

C-94-136-09

**DESIGN DESIGNATION**

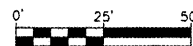
TRUITT AVENUE  
 ADT 4000 (08) MINOR ARTERIAL (MODIFIED AASHTO-20)



**FUNCTIONAL CLASSIFICATION: MINOR ARTERIAL**  
**DESIGN SPEED: 30 MPH**  
**DESIGN TRAFFIC: 5,400 ADT (2029)**  
**DESIGN GUIDELINES: URBAN**

**DRAWING SCALES**

PLAN: 1" = 50'

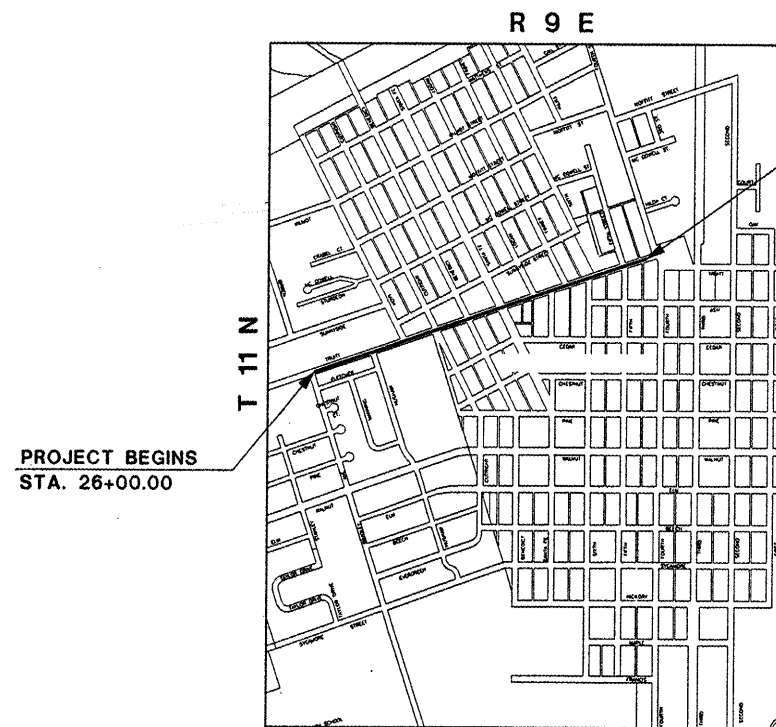


FULL SIZE PLANS HAVE BEEN PREPARED USING STANDARD ENGINEERING SCALES. REDUCED SIZED PLANS WILL NOT CONFORM TO STANDARD SCALES. IN MAKING MEASUREMENTS ON REDUCED PLANS, THE ABOVE SCALES MAY BE USED.

**J.U.L.I.E.**  
**JOINT UTILITY LOCATION INFORMATION FOR EXCAVATION**  
 1-800-892-0123  
 OR 811



**CALL JULIE**  
**BEFORE YOU DIG**



PROJECT BEGINS  
 STA. 26+00.00

PROJECT ENDS  
 STA. 65+00.00

3rd P.M.  
**LOCATION MAP**  
 0' 1250' 2500'



*Kenn Coulter* 10-1-09  
 KENNETH M. COULTER DATE

ILLINOIS REGISTERED PROFESSIONAL ENGINEER  
 No. 062-038839  
 EXPIRATION DATE 11/30/09  
 TRANSPORTATION  
 AECOM USA, Inc.  
 111 NE JEFFERSON, AVE.  
 PEORIA, IL 61602  
 T 309.676.8464 F 309.876.5445  
 IL Design Firm Reg. No. 184-001518

**AECOM**  
 www.aecom.com

APPROVED 10-07-09, 2009  
*Richard Underwood*  
 MAYOR, CITY OF CHILlicothe

PASSED 10/15, 2009  
*David Casella*  
 DISTRICT FOUR ENGINEER OF LOCAL ROADS & STREETS

RELEASING FOR BID BASED ON LIMITED REVIEW 10/15, 2009  
*Joseph E. Crowe*  
 DEPUTY DIRECTOR OF HIGHWAYS, REGION THREE ENGINEER  
 STATE OF ILLINOIS  
 DEPARTMENT OF TRANSPORTATION

**PRINTED BY THE AUTHORITY OF THE STATE OF ILLINOIS**

**CONTRACT NO. 89548**  
**CAT NO. 034291-00**

GROSS LENGTH OF IMPROVEMENT = 3,900.00 FEET = 0.738 MILES  
 NET LENGTH OF IMPROVEMENT = 3,900.00 FEET = 0.738 MILES

L:\CHILCO001\PLANS-XREFS\COVER.DGN

**INDEX OF SHEETS**

- 1 COVER
- 2 INDEX OF SHEETS, GENERAL NOTES AND SUMMARY OF QUANTITIES
- 3 TYPICAL SECTIONS
- 4 SCHEDULE OF QUANTITIES
- 5 PATCHING PLAN
- 6 PATCHING, MILLING, AND OVERLAY PLAN
- DISTRICT 4 STANDARDS**
- 7-9 406101-D4 BUTT JOINTS
- 10 440001-D4 HOT MIX ASPHALT SURFACE REMOVAL (COLD MILLING)
- 11-12 780001-D4 TYPICAL PAVEMENT MARKINGS

**HIGHWAY STANDARDS**

- 280001-05 701311-03
- 701501-05
- 442101-07 701701-06
- 442201-03 701901-01
- 760001-02

**COMMITMENTS**

No Commitments have been made for this Project

**JOB SPECIFIC NOTES**

Manhole Covers and Water Valve Lids to be adjusted by the CITY OF CHILLICOTHE.

**UTILITY COMPANY REPRESENTATIVES**

<b>WATER AND SEWER:</b>	<b>ELECTRIC AND GAS:</b>	<b>TELEPHONE:</b>
CITY OF CHILLICOTHE	AMEREN/CILCO	VERIZON
908 N. SECOND	8420 N. UNIVERSITY	
CHILLICOTHE, IL 61523	PEORIA, IL 61615	

**GENERAL NOTES**

**PROPERTY OWNER ACCESS REQUIREMENT**

Access must be maintained to all existing properties during construction per Article 107.09 unless arrangements are made in writing by the Contractor with the property owners with a copy to the Engineer for short-term closures.

**HOT-MIX ASPHALT MIXTURE REQUIREMENTS**

Mixture Use(s):	SURFACE	LEVELING BINDER (HM)
RAP % (Max)**:	10%	25%
AC/PG:	SBR or SBS 76-22	PG 64-22
Design Air Voids:	4.0% @ N = 70	4.2% @ N = 30
Mixture Composition (Gradation Mixture):	IL 9.5 OR IL 12.5	IL 9.5 OR IL 12.5
Friction Aggregate:	MIX "D"	MIX "C"
Mixture Weight:	112#/SQ YD/IN	112#/SQ YD/IN

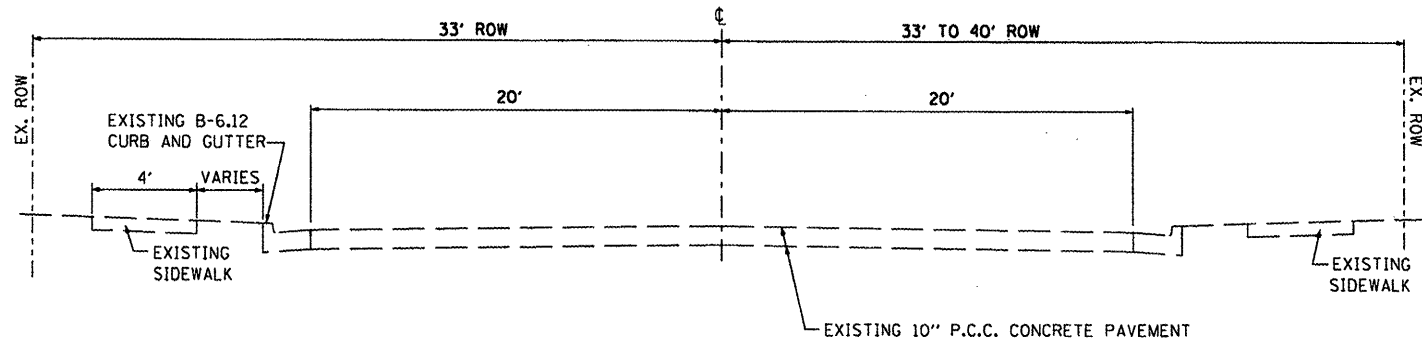
\*\*If the RAP option is selected, the asphalt cement grade may need to be adjusted; This will be determined by the Engineer.

**SUMMARY OF QUANTITIES**

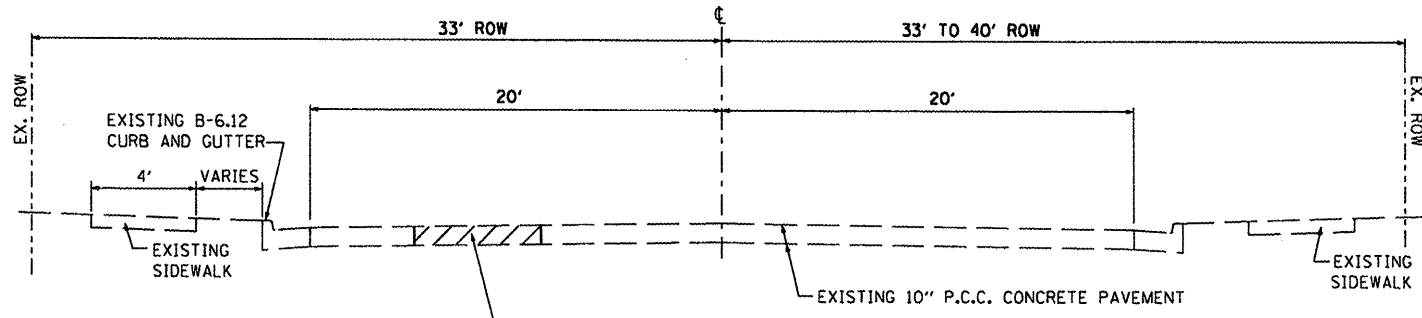
SUMMARY OF QUANTITIES				PEORIA COUNTY 100% FEDERAL CONSTRUCTION TYPE CODE
				ROADWAY URBAN
				0000
				(BIT.)
CODE NO.	PAY ITEM	UNIT	TOTAL QUANTITY	
40800115	POLYMERIZED BITUMINOUS MATERIALS (PRIME COAT)	GAL	990	990
40800300	AGGREGATE (PRIME COAT)	TON	12	12
40800400	MIXTURE FOR CRACKS, JOINTS, AND FLANGWAYS	TON	8	8
40800515	LEVELING BINDER (HAND METHOD) N90	TON	8	8
40800895	CONSTRUCTING TEST STRIP	EACH	1	1
40800985	PORTLAND CEMENT CONCRETE SURFACE REMOVAL - BUTT JOINT	SQ YD	267	267
40800980	TEMPORARY RAMP	SQ YD	44	44
40803540	POLYMERIZED HOT-MIX ASPHALT SURFACE COURSE, MIX "D", N70	TON	1,106	1,106
44000198	HOT-MIX ASPHALT SURFACE REMOVAL, VARIABLE DEPTH	SQ YD	343	343
44201284	CLASS B PATCH EXPANSION JOINT	FOOT	160	160
44201286	DEFORMED BARS - EXPANSION JOINT	EACH	32	32
44201349	CLASS C PATCHES TYPE I, 10 INCH	SQ YD	6	6
44213200	SAW CUTS	FOOT	1,842	1,842
67100100	MOBILIZATION	L SUM	1	1
70101700	TRAFFIC CONTROL AND PROTECTION	L SUM	1	1
70103815	TRAFFIC CONTROL SURVEILLANCE	CAL DA	11	11
* 78000200	THERMOPLASTIC PAVEMENT MARKING - LINE 4"	FOOT	458	458
* 78000650	THERMOPLASTIC PAVEMENT MARKING - LINE 24"	FOOT	80	80
X0321020	PORTLAND CEMENT CONCRETE SURFACE REMOVAL (COLD MILLING) VARIABLE DEPTH	SQ YD	2,474	2,474
XX005136	CLASS B PATCHES (SPECIAL)	SQ YD	236	236
Z0013798	CONSTRUCTION LAYOUT	L SUM	1	1
Z0017202	DOWEL BARS 1 1/2"	EACH	165	165
Z0075310	TIE BARS 3/4"	EACH	47	47

\* SPECIALTY ITEMS

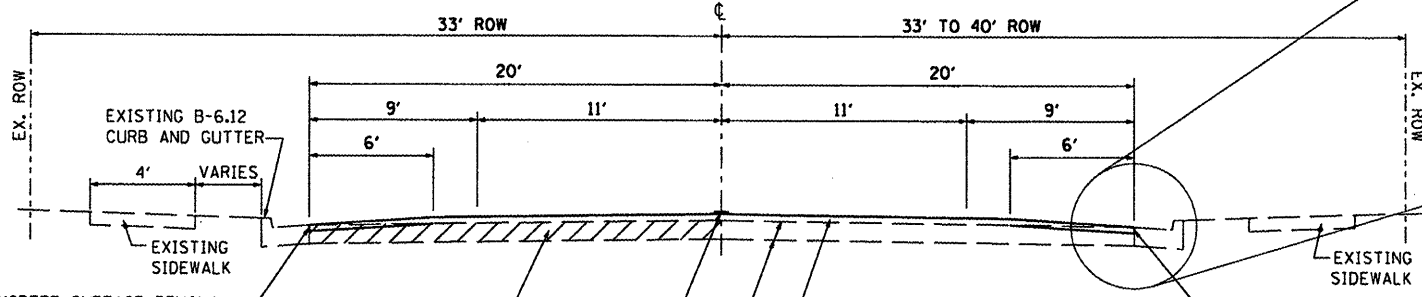
10/15/2009 11:33:04 AM L:\CHIL0001\Truitt Ave 2009\Plans-Xrefs\02-INDEX NOTES S00.dgn



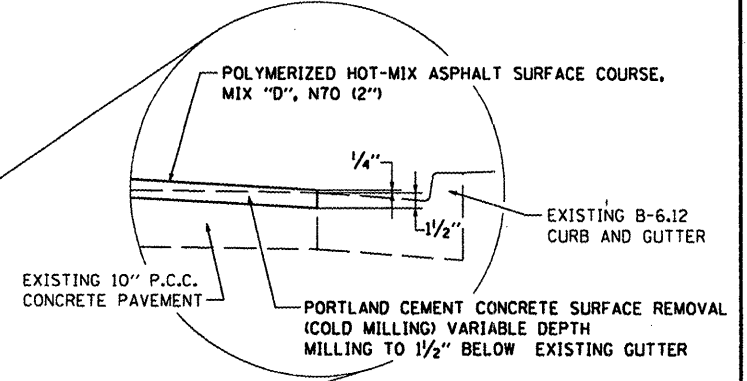
**EXISTING SECTION TRUITT AVENUE**  
 4TH STREET TO BRADLEY AVENUE  
 STA. 26+00 TO STA. 65+00



**PROPOSED PATCHING SECTION TRUITT AVENUE**  
 BRADLEY AVENUE TO SANTA FE  
 STA. 26+00 TO STA. 46+70



**PROPOSED PATCHING, MILLING, AND OVERLAY SECTION TRUITT AVENUE**  
 SANTA FE TO 4TH STREET  
 STA. 46+70 TO STA. 65+00



FILE NAME = L:\CHIL0001\PLANS-XREFS\ 03-TYPICAL SECTIONS.DGN	USER NAME =	DESIGNED -	REVISED -	<b>STATE OF ILLINOIS DEPARTMENT OF TRANSPORTATION</b>	<b>CITY OF CHILICOTHE - TRUITT AVENUE TYPICAL SECTIONS</b>			F.A.U. RTE.	SECTION	COUNTY	TOTAL SHEETS	SHEET NO.
	PLOT SCALE =	CHECKED -	REVISED -					6548	09-00008-00-RS	PEORIA	12	3
	PLOT DATE = 10-01-09	DATE -	REVISED -					CONTRACT NO. 89548				
					SCALE: NONE	SHEET NO.	OF SHEETS	STA.	TO STA.	ILLINOIS FED. AID PROJECT		

**SCHEDULE OF QUANTITIES**

PAVEMENT REMOVAL SCHEDULE				PORTLAND CEMENT CONCRETE SURFACE REMOVAL - BUTT JOINT	HOT-MIX ASPHALT SURFACE REMOVAL, VARIABLE DEPTH	PORTLAND CEMENT CONCRETE SURFACE REMOVAL (COLD MILLING), VARIABLE DEPTH
LOCATION				SQ YD	SQ YD	SQ YD
STA. 46+70.00		TO	STA. 47+00.00	133.5		
STA. 47+00.00		TO	STA. 64+70.00			2,474.0
SANTA FE	LT				45.6	
SANTA FE	RT				70.0	
LOGAN	LT				35.3	
SEVENTH	RT				36.8	
FINNEY	LT				35.3	
SIXTH	RT				39.7	
FIFTH	LT				35.4	
FIFTH	RT				44.7	
STA. 64+70.00		TO	STA. 65+00.00	133.5		
<b>TOTAL</b>				<b>267</b>	<b>343</b>	<b>2,474</b>

MOBILIZATION	
LOCATION	L. SUM
ENTIRE PROJECT	1
<b>TOTAL</b>	<b>1</b>

TRAFFIC CONTROL AND PROTECTION	
LOCATION	L. SUM
ENTIRE PROJECT	1
<b>TOTAL</b>	<b>1</b>

ROAD SURFACE SCHEDULE								
LOCATION			AREA FOR INFORMATION ONLY	POLYMERIZED BITUMINOUS MATERIALS (PRIME COAT)	AGGREGATE (PRIME COAT)	MIXTURE FOR CRACKS, JOINTS, AND FLANGEWAYS	LEVELING BINDER (HAND METHOD) N30	POLYMERIZED HMA SURFACE COURSE MIX D, N70
			SQ YD	TON	TON	TON	TON	TON
STA. 46+70.00	TO	STA. 65+00.00	8,133.0	814.0	9.87			910.9
SANTA FE (NORTH)			291.0	29.0	0.35			32.6
SANTA FE (SOUTH)			412.0	42.0	0.50			46.1
LOGAN			154.0	16.0	0.19			17.2
SEVENTH			192.0	19.0	0.23			21.5
FINNEY			152.0	15.0	0.18			17.0
SIXTH			209.0	21.0	0.25			23.4
FIFTH (NORTH)			135.0	14.0	0.17			15.1
FIFTH (SOUTH)			195.0	20.0	0.24			21.8
VARIOUS LOCATIONS						8.0	8.0	
<b>TOTAL</b>			<b>9,873.0</b>	<b>980.0</b>	<b>12.0</b>	<b>8.0</b>	<b>8.0</b>	<b>1,106</b>

TRAFFIC CONTROL SURVEILLANCE	
LOCATION	CAL DA
ENTIRE PROJECT	11
<b>TOTAL</b>	<b>11</b>

CONSTRUCTING TEST STRIP	
LOCATION	EACH
ENTIRE PROJECT	1
<b>TOTAL</b>	<b>1</b>

THERMOPLASTIC PAVEMENT MARKING SCHEDULE					
PAVEMENT MARKING - LINE 4"					PAVEMENT MARKING - LINE 24"
YELLOW SKIP DASH					WHITE
FOOT					FOOT
STA. 46+70	TO	STA. 65+00	CL	458	
SANTA FE		NORTH			26
SANTA FE		SOUTH			32
TRUITT		WEST			11
TRUITT		EAST			11
<b>TOTAL</b>					<b>80</b>

CONSTRUCTION LAYOUT	
LOCATION	L. SUM
ENTIRE PROJECT	1
<b>TOTAL</b>	<b>1</b>

TEMPORARY RAMP	
LOCATION	SQ YD
STA. 47+00	22.0
STA. 64+70	22.0
<b>TOTAL</b>	<b>44.0</b>

FILE NAME = L:\CHIL\000\PLANS-XREFS\04-SCHED QTY.DGN

USER NAME =	DESIGNED -	REVISED -
PLOT SCALE =	DRAWN -	REVISED -
PLOT DATE = 10-01-09	CHECKED -	REVISED -
	DATE -	REVISED -

**STATE OF ILLINOIS  
DEPARTMENT OF TRANSPORTATION**

**CITY OF CHILlicothe - TRUITT AVENUE  
SCHEDULE OF QUANTITIES**

SCALE: NONE SHEET NO. OF SHEETS STA. TO STA.

F.A.J. RTE.	SECTION	COUNTY	TOTAL SHEETS	SHEET NO.
6548	09-00008-00-RS	PEORIA	12	4
<b>CONTRACT NO. 89548</b>				

ILLINOIS FED. AID PROJECT

**PATCHING SCHEDULE**

PATCH	STATION	CLASS EASTBOUND		C		B (SPECIAL)		DOWELL BARS 1 1/2"	TIE BARS 3/4"	SAW CUTS	CLASS B PATCH EXPANSION JOINT	DEFORMED BARS - EXPANSION JOINT
		WIDTH FOOT	LENGTH FOOT	AREA SQ YD	AREA SQ YD	TYPE I	TYPE II					
		FOOT	FOOT	EA	EA	EA	EA					
1	RT. 27+10	20	4	-	8.9	4	2	72	20	4		
2	RT. 30+50	4	4	1.8	-	-	-	-	-	-		
3	RT. 31+50	20	4	-	8.9	4	2	72	20	4		
4	RT. 39+90	20	4	-	8.9	8	2	72	-	-		
5	RT. 41+10	20	4	-	8.9	4	2	72	20	4		
SUB-TOTAL				1.8	35.6	20	8	288	60	12		

NOTE: STATION SHOWN IS APPROXIMATE.

PATCH	STATION	CLASS WESTBOUND		C		B (SPECIAL)		DOWELL BARS 1 1/2"	TIE BARS 3/4"	SAW CUTS	CLASS B PATCH EXPANSION JOINT	DEFORMED BARS - EXPANSION JOINT
		WIDTH FOOT	LENGTH FOOT	AREA SQ YD	AREA SQ YD	TYPE I	TYPE II					
		FOOT	FOOT	EA	EA	EA	EA					
16	LT. 27+10	20	4	-	8.9	4	1	72	20	4		
17	LT. 31+50	20	4	-	8.9	4	1	72	20	4		
18	LT. 31+90	20	4	-	8.9	8	2	72	-	-		
19	LT. 39+90	20	4	-	8.9	8	1	72	-	-		
20	LT. 41+10	20	4	-	8.9	4	1	72	20	4		
TOTAL (THIS SHEET)				1.8	80.1	48	14	648	120	24		

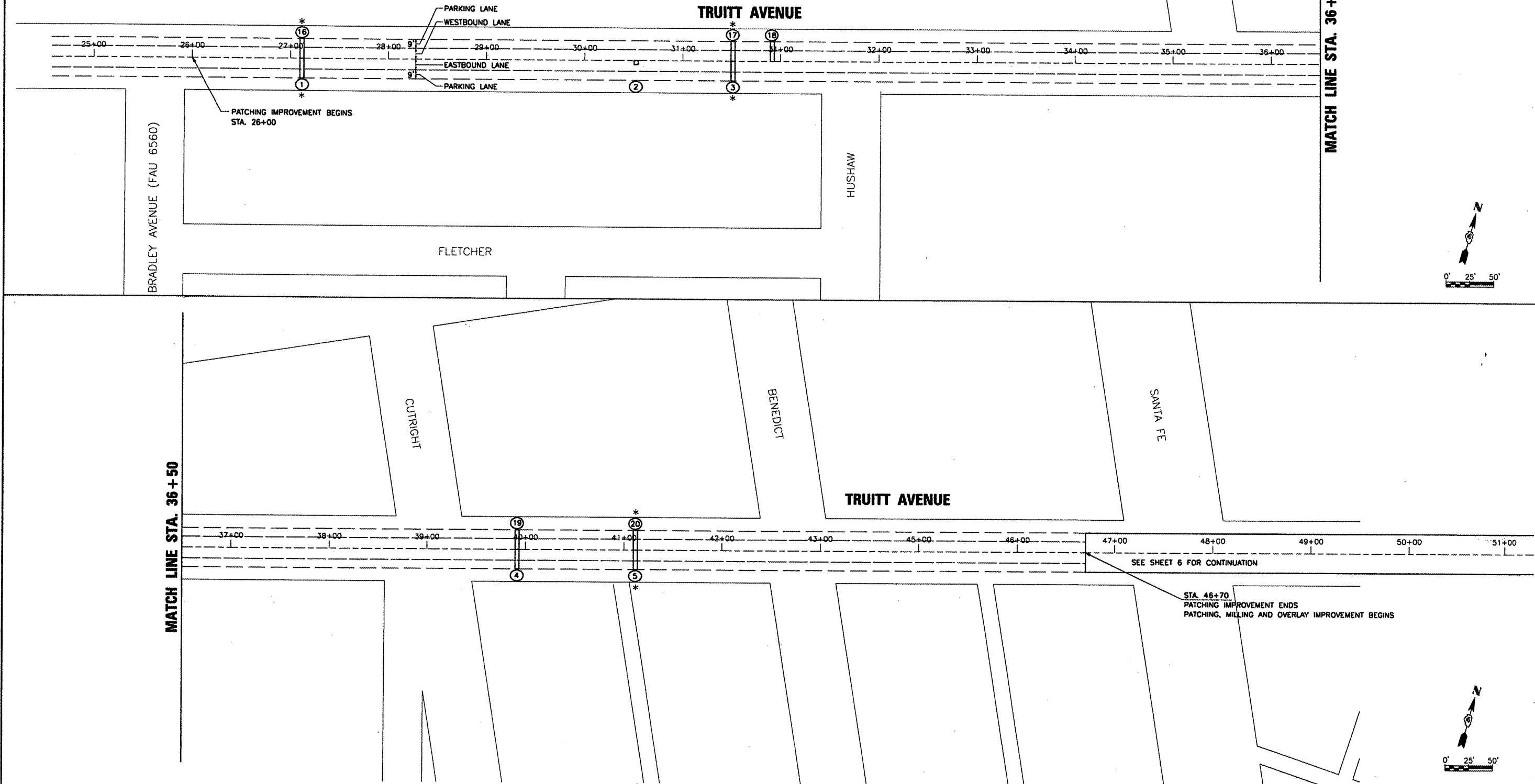
**PATCHING LEGEND**



INDICATES PATCH LOCATION W/IDENTIFICATION NUMBER



INDICATES PATCH REQUIRES EXPANSION JOINT



FILE NAME = L:\CHILCO\PLANS-XREFS\05-PATCHING PLAN.DGN

USER NAME = #USER#	DESIGNED -	REVISED -
PLOT SCALE = #SCALE#	DRAWN -	REVISED -
PLOT DATE = #DATE#	CHECKED -	REVISED -
	DATE -	REVISED -

**STATE OF ILLINOIS  
DEPARTMENT OF TRANSPORTATION**

**CITY OF CHILICOTHE - TRUITT AVENUE  
PATCHING PLAN**

SCALE: AS SHOWN SHEET NO. OF SHEETS STA. TO STA.

F.A.I.L. RTE. 6548	SECTION 09-00008-00-RS	COUNTY PEORIA	TOTAL SHEETS 12	SHEET NO. 5
CONTRACT NO. 89548				
ILLINOIS FED. AID PROJECT				

**PATCHING SCHEDULE**

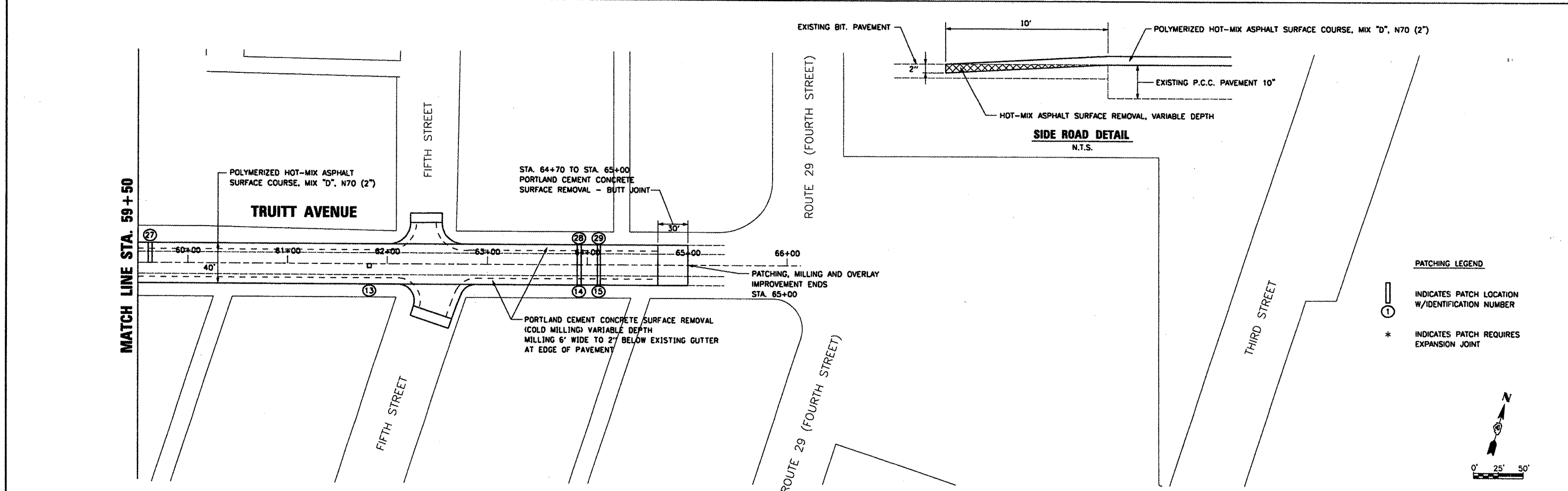
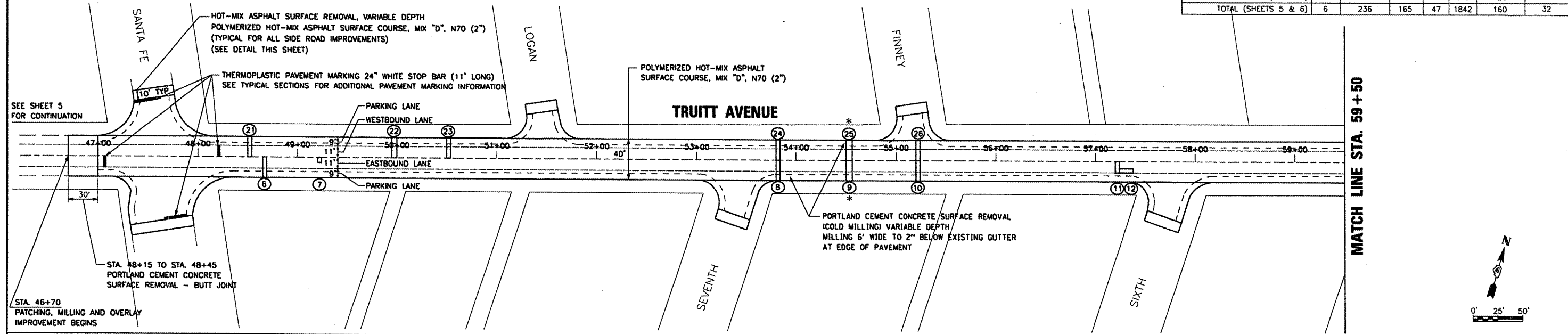
CLASS	C		B (SPECIAL)		DOWELL BARS 1 1/2"	TIE BARS 3/4"	SAW CUTS	CLASS B PATCH EXPANSION JOINT	DEFORMED BARS - EXPANSION JOINT
	TYPE I	TYPE II	AREA SQ YD	AREA SQ YD					
6 RT. 48+65	20	4	8.9	8	2	72	-	-	
7 RT. 49+20	5	4	2.2	-	-	-	-	-	
8 RT. 53+80	20	4	8.9	8	2	72	-	-	
9 RT. 54+50	20	6	13.4	4	2	78	20	4	
10 RT. 55+20	20	4	8.9	8	2	72	-	-	
SUB-TOTAL	2.2	40.1	28	8	294	20	4		

CLASS	C		B (SPECIAL)		DOWELL BARS 1 1/2"	TIE BARS 3/4"	SAW CUTS	CLASS B PATCH EXPANSION JOINT	DEFORMED BARS - EXPANSION JOINT
	TYPE I	TYPE II	AREA SQ YD	AREA SQ YD					
11 RT. 57+20	11	4	5.0	3	2	45	-	-	
12 RT. 57+24	4	14	6.2	2	6	54	-	-	
13 RT. 61+80	4	4	1.8	-	-	-	-	-	
14 RT. 63+90	20	4	8.9	8	2	72	-	-	
15 RT. 64+10	20	4	8.9	8	2	72	-	-	
SUB-TOTAL	4.0	69.1	49	20	537	20	4		

CLASS	C		B (SPECIAL)		DOWELL BARS 1 1/2"	TIE BARS 3/4"	SAW CUTS	CLASS B PATCH EXPANSION JOINT	DEFORMED BARS - EXPANSION JOINT
	TYPE I	TYPE II	AREA SQ YD	AREA SQ YD					
21 LT. 48+50	20	4	8.9	8	2	72	-	-	
22 LT. 49+95	20	5	11.1	8	2	75	-	-	
23 LT. 50+50	20	4	8.9	8	2	72	-	-	
24 LT. 53+80	20	4	8.9	8	1	72	-	-	
25 LT. 54+50	20	6	13.4	4	1	78	20	4	
SUB-TOTAL	4.0	120.3	85	28	906	40	8		

CLASS	C		B (SPECIAL)		DOWELL BARS 1 1/2"	TIE BARS 3/4"	SAW CUTS	CLASS B PATCH EXPANSION JOINT	DEFORMED BARS - EXPANSION JOINT
	TYPE I	TYPE II	AREA SQ YD	AREA SQ YD					
26 LT. 55+20	20	4	8.9	8	1	72	-	-	
27 LT. 59+60	20	4	8.9	8	2	72	-	-	
28 LT. 63+90	20	4	8.9	8	1	72	-	-	
29 LT. 64+10	20	4	8.9	8	1	72	-	-	
SUB-TOTAL (THIS SHEET)	4.0	155.9	117	33	1194	40	8		
SUB-TOTAL (SHEET 5)	1.8	80.1	48	14	648	120	24		
TOTAL (SHEETS 5 & 6)	6	236	165	47	1842	160	32		

NOTE: STATION SHOWN IS APPROXIMATE.



FILE NAME = L:\CHILCO\PLANS-XREFS\06-OVERLAY PLAN.DGN

USER NAME = #USER#  
 DESIGNED -  
 DRAWN -  
 PLOT SCALE = #SCALE#  
 PLOT DATE = #DATE#

REVISED -  
 REVISED -  
 REVISED -  
 REVISED -

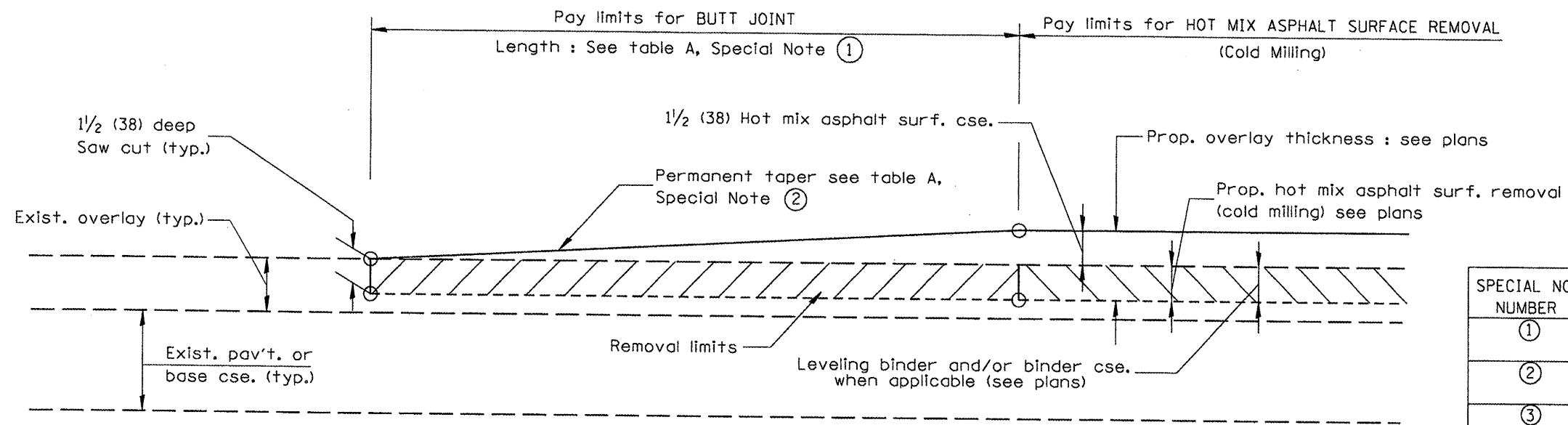
**STATE OF ILLINOIS**  
**DEPARTMENT OF TRANSPORTATION**

**CITY OF CHILICOTHE - TRUITT AVENUE**  
**PATCHING, MILLING AND OVERLAY PLAN**

F.A.U. RTE. 6548	SECTION 09-0008-00-RS	COUNTY PEORIA	TOTAL SHEETS 12	SHEET NO. 6
CONTRACT NO. 89548				
ILLINOIS FED. AID PROJECT				

SCALE: AS SHOWN SHEET NO. OF SHEETS STA. TO STA.

DESIGNER NOTES:  
 1. Include District Special Provision for Butt Joints & for Hot Mix Asphalt Removal (Cold Milling).  
 2. The butt joints pay item includes the saw cut & temporary ramp. Payment for the Butt Joint applies whether or not the project features Hot Mix Asphalt Removal (Cold Milling).



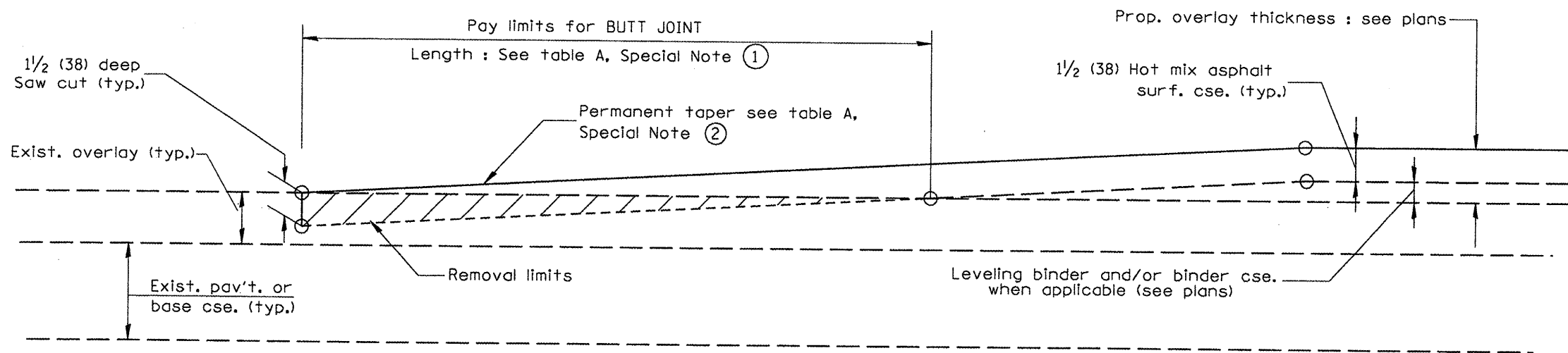
**CASE 1 : WITH HOT MIX ASPHALT SURFACE REMOVAL (COLD MILLING)**

**TABLE A**  
(LENGTHS AND TAPER RATES)

SPECIAL NOTE NUMBER	ELEMENT	MAINLINE INTERSTATES & 4-LANE EXPRESSWAYS	ALL OTHERS
①	LENGTH OF BUTT JOINT	60'(18.0 m)	30'(9.0 m)
②	PERMANENT TAPER RATE	1:480	1:240
③	TEMPORARY RAMP TAPER RATE	1:80	1:40
④	TEMPORARY RAMP LENGTH	10'(3.0 m)	5'(1.5 m)
⑤	LENGTH OF BUTT JOINT	10'(3.0 m)	10'(3.0 m)

**GENERAL NOTES**

- The work shall be done in accordance with Article 406.08 and the Special Provision for Butt Joints.
- The pavement surface to be removed may be either bituminous or P.C. concrete. The work shall be performed in accordance with Article 440.04 and the Special Provisions for Butt Joints.
- The saw cut joints shall be primed just prior to the placing of bituminous material. The work will be in accordance with the applicable portions of Article 406.05.



**CASE 2 : NO HOT MIX ASPHALT SURFACE REMOVAL (COLD MILLING)**

All dimensions are in inches (millimeters) unless otherwise noted.

01-01-97	RENUM. C-23.01. NEW REVISION BOX	T.P.			
04-01-97	CORRECTION TO DEPTH	J.A.			
09-15-05	REVISED DESIGNER NOTE	M.M.A.			
10-16-06	REVISED TO 2007 SPEC.	M.A.			

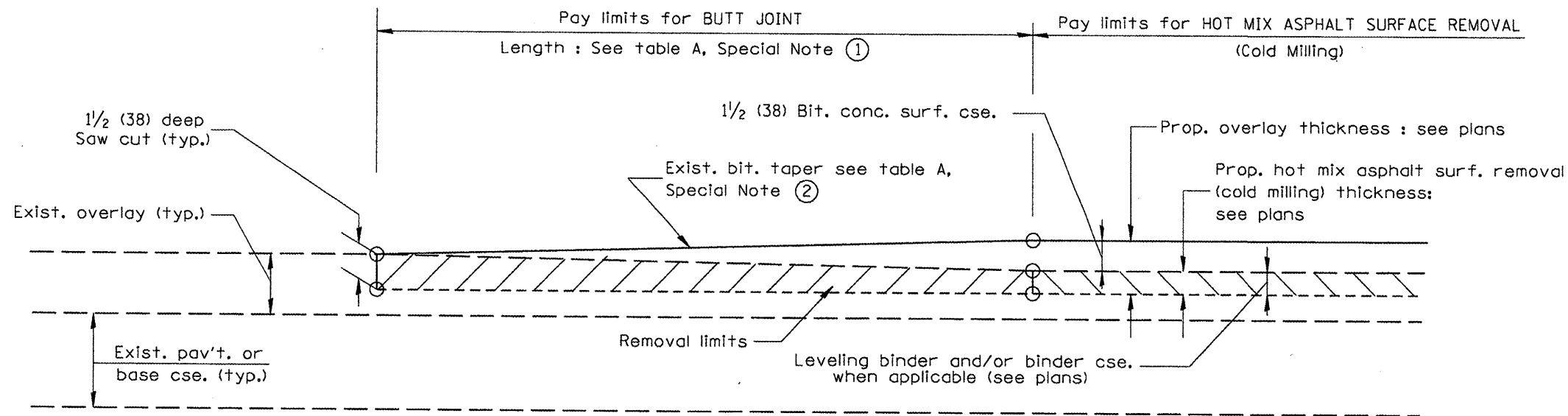
**STATE OF ILLINOIS**  
**DEPARTMENT OF TRANSPORTATION**

**BUTT JOINTS**

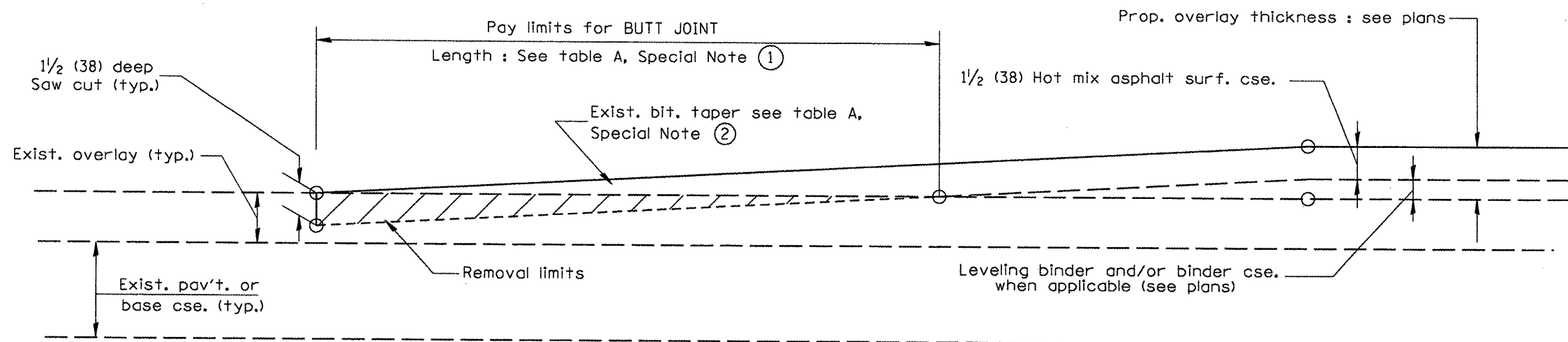
NOT TO SCALE

SHT. 1 OF 3  
CADD STD. 406101-D4

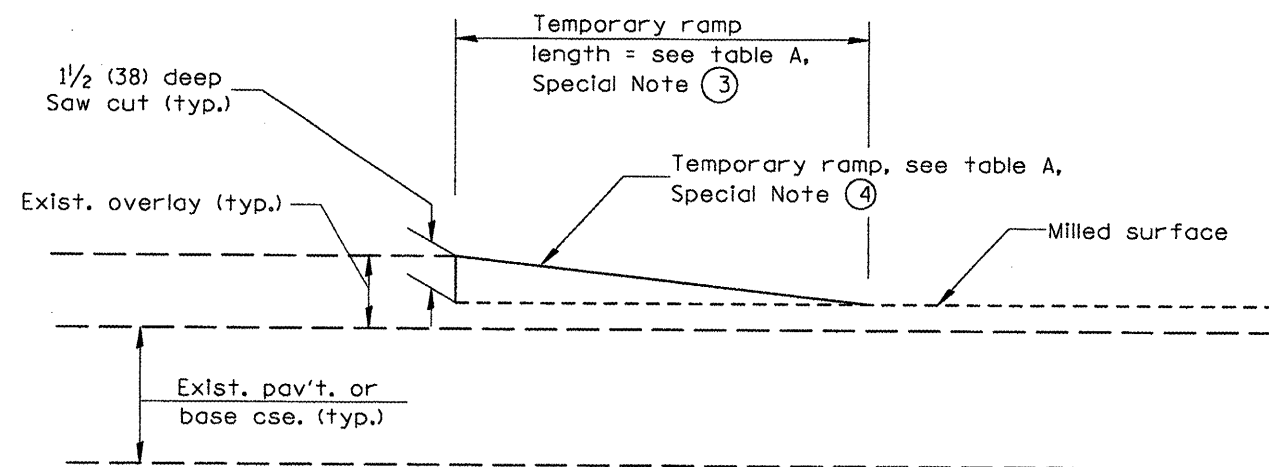
F.A.U. RTE.	SECTION	COUNTY	TOTAL SHEETS	SHEET NO.
6548	09-00008-00-R5	PEORIA	12	7
FED. ROAD DIST. NO. 4 ILLINOIS FED. AID PROJECT			CONTRACT NO. 89548	



**CASE 3 : WITH HOT MIX ASPHALT SURFACE REMOVAL (COLD MILLING)  
TIE-IN TO EXISTING BITUMINOUS TAPER**



**CASE 4 : NO HOT MIX ASPHALT SURFACE REMOVAL (COLD MILLING)  
TIE-IN TO EXISTING BITUMINOUS TAPER**



**DETAIL TEMPORARY RAMP**

All dimensions are in inches (millimeters) unless otherwise noted.


STATE OF ILLINOIS  
DEPARTMENT OF TRANSPORTATION

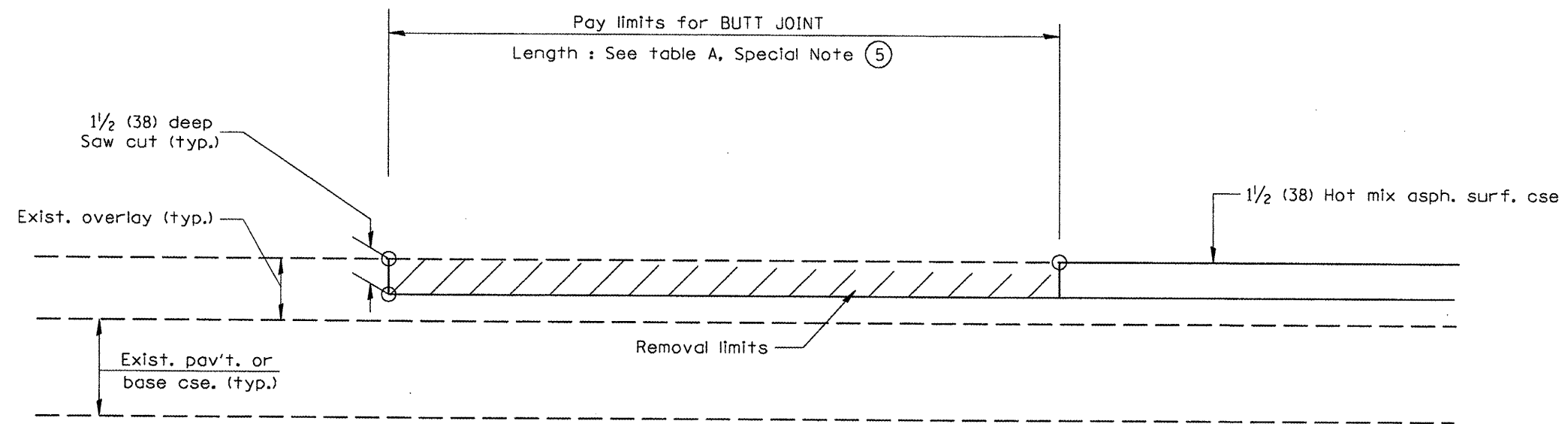
BUTT JOINTS

NOT TO SCALE

SHT. 2 OF 3  
CADD STD. 406101-D4

F.A.U. RTE.	SECTION	COUNTY	TOTAL SHEETS	SHEET NO.
6548	09-00008-00-RS	PEORIA	12	8
CONTRACT NO. 89548			FED. ROAD DIST. NO. 4 ILLINOIS FED. AID PROJECT	





CASE 5 : WITH HOT MIX ASPHALT SURFACE REMOVAL (COLD MILLING)  
TIE-IN TO EXISTING BITUMINOUS TAPER

All dimensions are in inches (millimeters) unless otherwise noted.


STATE OF ILLINOIS  
 DEPARTMENT OF TRANSPORTATION

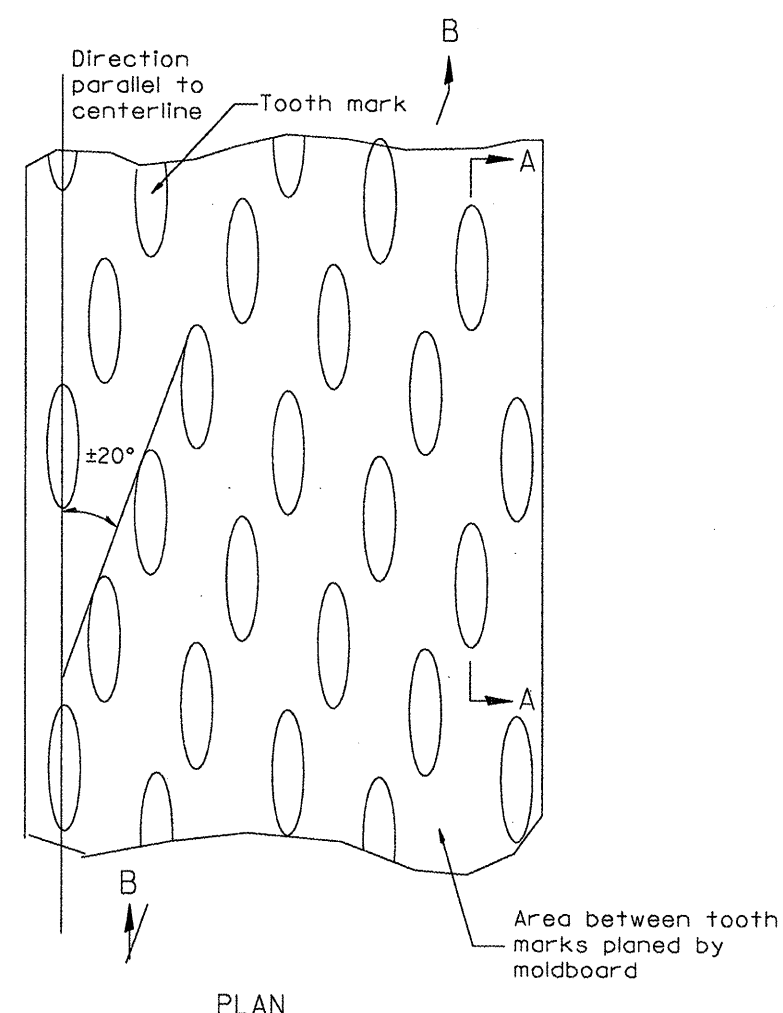
NOT TO SCALE

BUTT JOINTS

SHT. 3 OF 3  
 CADD STD. 406101-04

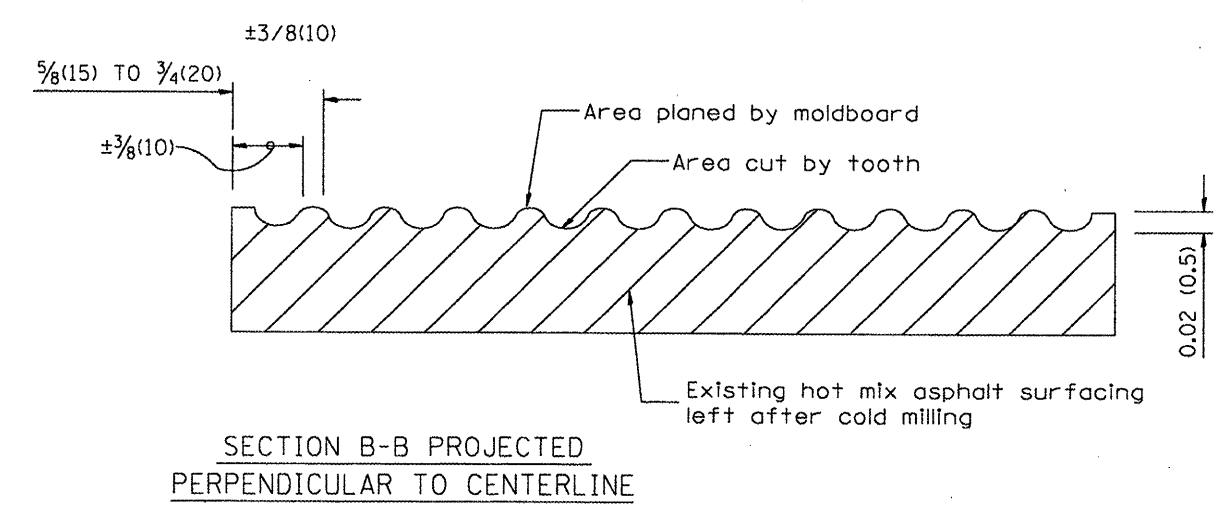
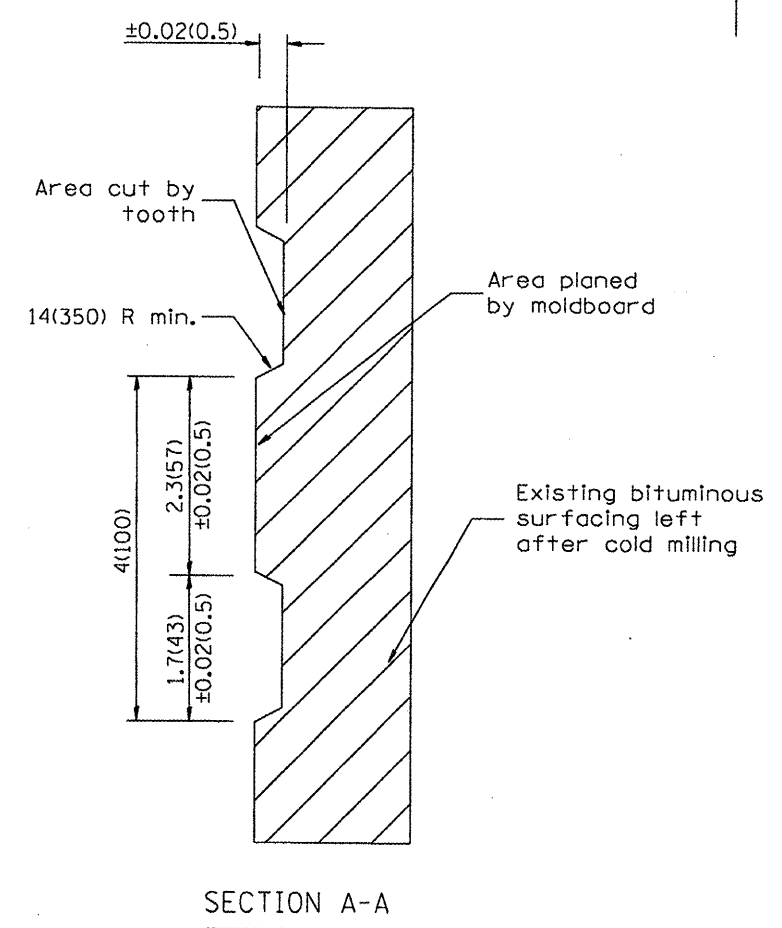
F.A.U. RTE.	SECTION	COUNTY	TOTAL SHEETS	SHEET NO.
6548	09-00008-00-RS	PEORIA	12	9
FED. ROAD DIST. NO. 4 (ILLINOIS) FED. AID PROJECT			CONTRACT NO. 89548	

DESIGNER NOTES:  
1. INCLUDE DISTRICT SPECIAL PROVISION, IF APPLICABLE.



General notes:

1. Coldmilling shall consist of two processes: Cutting with carbide teeth mounted on a rotating drum, and planing with a moldboard mounted immediately behind the cutting drum.
2. Other similar patterns will be acceptable if they consist of a smooth, flat, planed surface interspersed with a pattern of discontinuous longitudinal striations.



All dimensions are in inches (millimeters) unless otherwise noted.

01-01-97	RENUM. C-104.01, NEW REVISION BOX	T.P.
04-20-98	REMOVED MILLING DETAIL FROM STANDARD	J.A.
09-08-98	CORRECT NOTE LEADER PLACEMENT	R.W.
10-16-06	REVISED TO 2007 SPEC.	M.A.

**STATE OF ILLINOIS  
DEPARTMENT OF TRANSPORTATION**

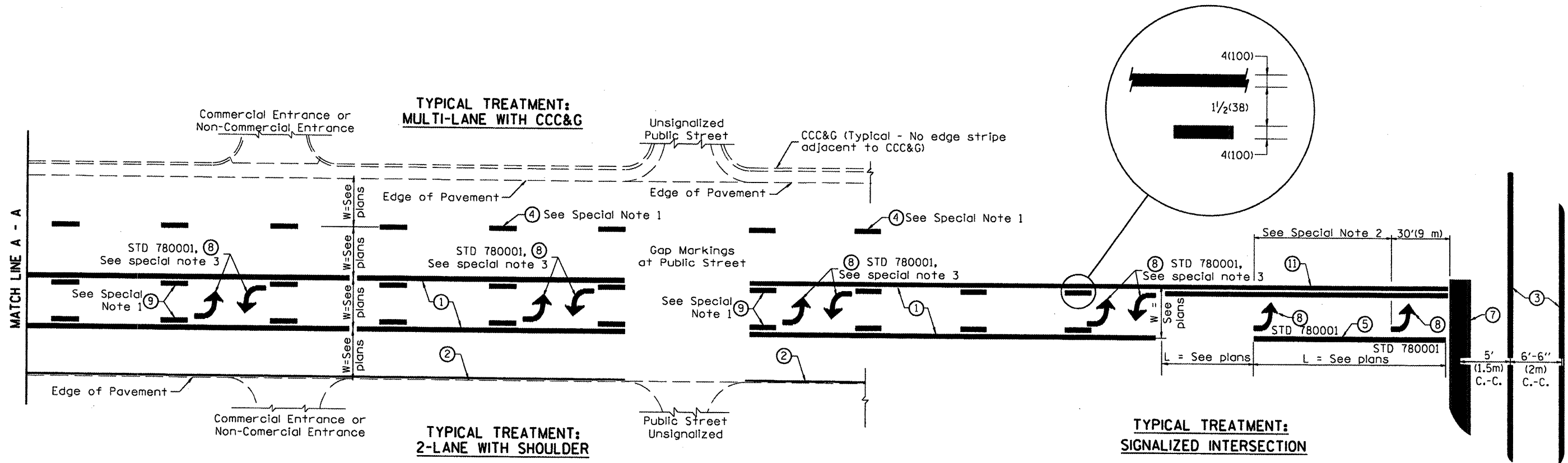
**HOT MIX ASPHALT SURFACE REMOVAL (COLD MILLING)**

NOT TO SCALE

CADD STD. 440001-D4

F.A.U. RTE.	SECTION	COUNTY	TOTAL SHEETS	SHEET NO.
6548	09-00008-00-RS	PEORIA	12	10
CONTRACT NO. 89548				

FED. ROAD DIST. NO. 4 ILLINOIS FED. AID PROJECT



**FLUSH PAVED MEDIAN: TWO-WAY LEFT TURN LANE WITH ONE-WAY LEFT TURN LANE AT SIGNALIZED INTERSECTION**

**TYPICAL PAVEMENT MARKING LEGEND**

(Note: This is a District Standard Legend. Some elements may not apply to specific project.)

- ① 4(100) Solid (Yellow)
- ② 4(100) Solid (White)
- ③ 2-6(150) Crosswalk @ 6'-6" (2m) min C.-C. (White)  
2-8(200) Crosswalk @ 6'-6" (2m) min C.-C. (White) (When traffic signals are present.)
- ④ 6(150) Skip-Dash (White) (See Special Note 1)
- ⑤ 8(200) Solid (White)
- ⑥ 12(300) Diagonal (White) (Item ⑥ is shown on Std. 780001)
- ⑦ 24(600) Stop Bar (White)
- ⑧ Letters & Arrows (See Std. 780001 and Special Notes 2 & 3)
- ⑨ 4(100) Skip-Dash (Yellow) (See Special Note 1)
- ⑩ 12(300) Diagonal (Yellow) (See Table A) ⑩
- ⑪ 4(100) Double Solid (Yellow) ⑪

**SPECIAL NOTES**

1. Skip-Dash markings will be centered between both ends of city blocks and shall be placed in alignment transversely across the pavement.
2. The following shall apply to arrows located in one-way left turn lanes:
  - A. A minimum of two (2) arrows is required.
  - B. The maximum spacing between arrows is 80' (24 m).
  - C. Arrows shall be evenly spaced if three (3) or more are required.
3. The following shall apply to arrow pairs located in two-way left turn lanes:
  - A. A minimum of two (2) arrow pairs is required.
  - B. The maximum spacing between arrow pairs is 200' (61 m).
  - C. Arrow pairs shall be evenly spaced if three (3) or more are required.
  - D. The spacing between Bi Directional Left Turn Arrows is 33' (10 m).

**GENERAL NOTES**

1. Refer to State Standard 780001 for additional Pavement Markings including letters & arrows.
2. See Plans for Pavement Markings adjacent to curbed islands and medians, and through lane reductions.

DESIGNER NOTES:  
1. Include State Standard 780001 (Typical Pavement Markings)

01-01-97	RENUM. F-8.03, NEW REVISION BOX	T.P.	10-16-06	REVISED TO 2007 SPEC.
02-07-97	ADD BI DIRECTIONAL DIMENSION	J.A.		
10-97	CORRECT BI DIRECTIONAL DIMENSION	J.A.		
08-02	ADD CROSSWALK DMNS. WITH T.S.	M.A.		

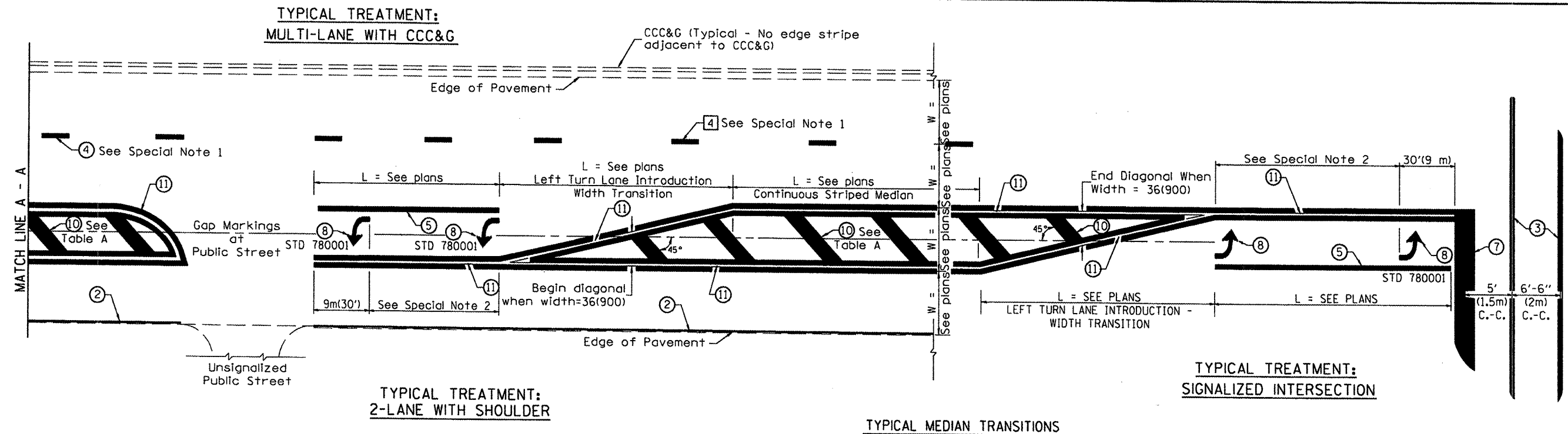
**STATE OF ILLINOIS  
DEPARTMENT OF TRANSPORTATION**

**TYPICAL PAVEMENT MARKINGS**

NOT TO SCALE

F.A.U. RTE.	SECTION	COUNTY	TOTAL SHEETS	SHEET NO.
6548	09-00008-00-RS	PEORIA	12	11
FED. ROAD DIST. NO.		ILLINOIS FED. AID PROJECT		
		CONTRACT NO. 89548		

SHT. 1 OF 2  
CADD STD. 780001-D4



TYPICAL TREATMENT:  
2-LANE WITH SHOULDER

TYPICAL MEDIAN TRANSITIONS

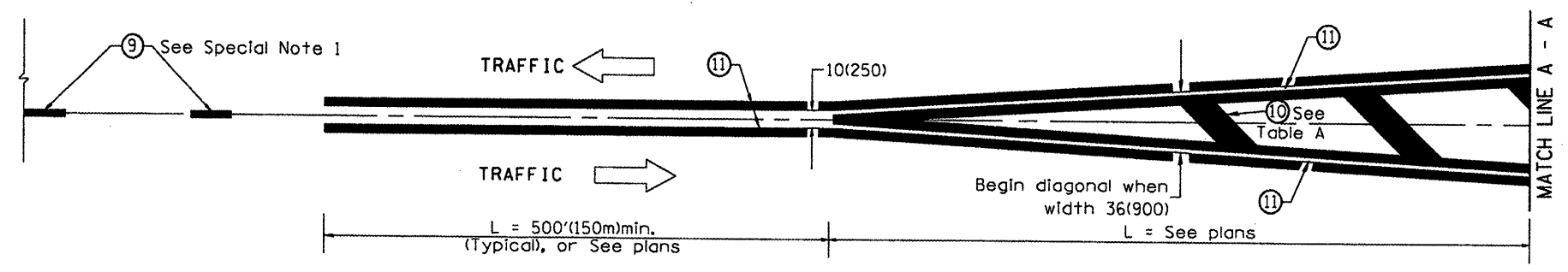
TYPICAL TREATMENT:  
SIGNALIZED INTERSECTION

FLUSH PAVED MEDIAN: RESTRICTED LEFT TURN LANE

TABLE A

RECOMMENDED SPACING BETWEEN DIAGONAL LINES

SPEED LIMIT RANGE	CONTINUOUS	INTERSECTION CHANNELIZATION
		(Includes Width Transitions for Median and Left Turn Lane Introductions)
Less Than 30 mph (50 km/h)	50' (15m)	15' (5m)
30 - 45 mph (50 - 70 km/h)	75' (23m)	20' (6m)
Over 45 mph (70 km/h)	150' (46m)	30' (9m)



MEDIAN INTRODUCTION - WIDTH TRANSITIONS

All dimensions are in inches (millimeters) unless otherwise noted.