

RIGHT OF WAY PLAT

SW 1/4, SECTION 23, T2N, R1E, 4th P.M.

PARCEL 1
VILLAGE OF BROWNING

PROP. R. O. W. 0.5815 AC.
EXIST. R. O. W. 0.3207 AC.
NET R. O. W. 0.2608 AC.

PARCEL 4
VIRGIL & MARSHA HAMM

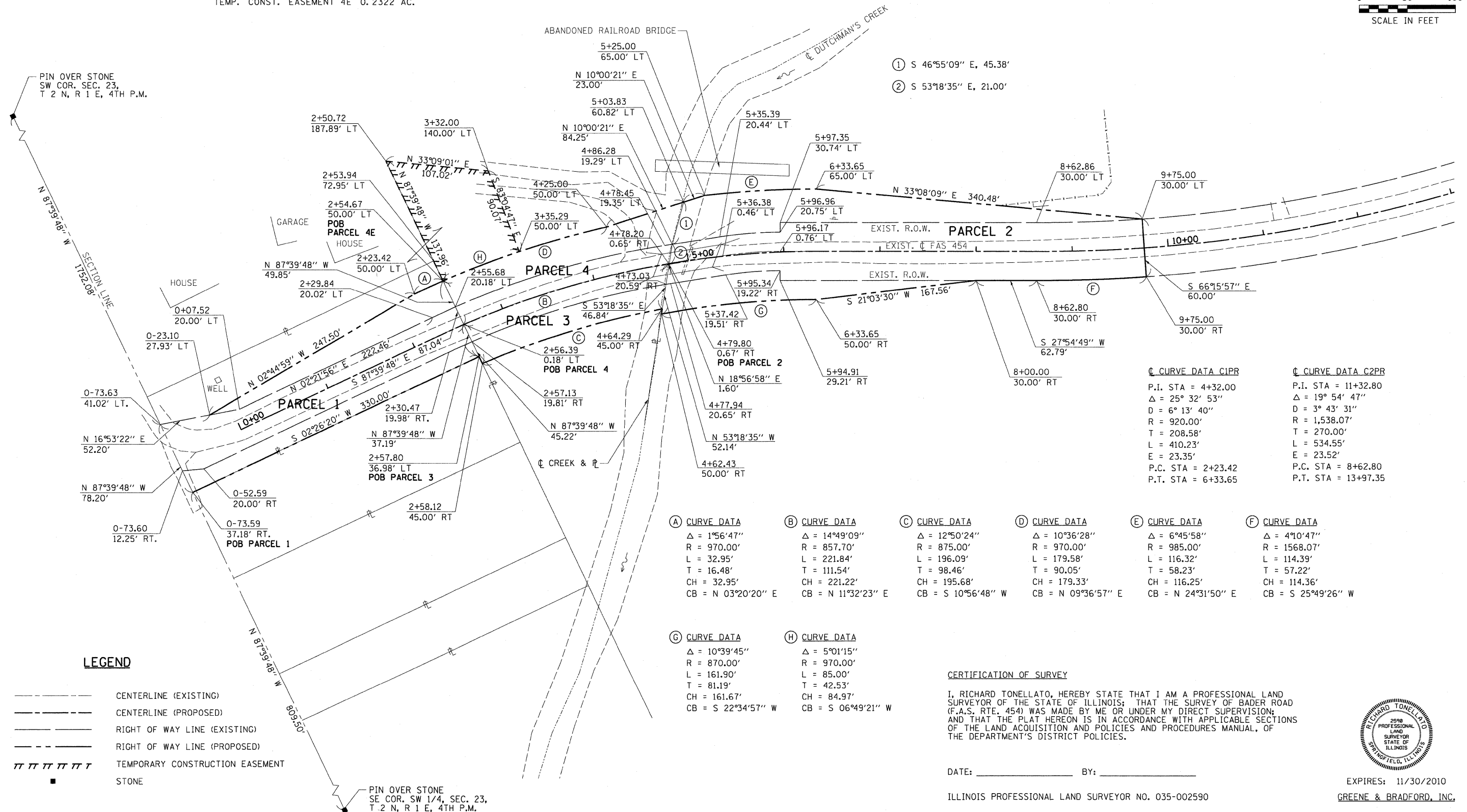
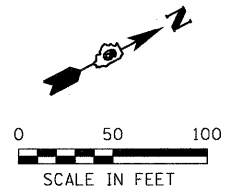
PROP. R. O. W. 0.2837 AC.
EXIST. R. O. W. 0.1054 AC.
NET R. O. W. 0.1783 AC.
TEMP. CONST. EASEMENT 4E 0.2322 AC.

PARCEL 3
VIRGIL & MARSHA HAMM

PROP. R. O. W. 0.2173 AC.
EXIST. R. O. W. 0.0998 AC.
NET R. O. W. 0.1175 AC.

PARCEL 2
BURTON FARMS INC.

PROP. R. O. W. 1.0551 AC.
EXIST. R. O. W. 0.6185 AC.
NET R. O. W. 0.4366 AC.



① CURVE DATA C1PR
P.I. STA = 4+32.00
Δ = 25° 32' 53"
D = 6° 13' 40"
R = 920.00'
T = 208.58'
L = 410.23'
E = 23.35'
P.C. STA = 2+23.42
P.T. STA = 6+33.65

② CURVE DATA C2PR
P.I. STA = 11+32.80
Δ = 19° 54' 47"
D = 3° 43' 31"
R = 1,538.07'
T = 270.00'
L = 534.55'
E = 23.52'
P.C. STA = 8+62.80
P.T. STA = 13+97.35

(A) CURVE DATA
Δ = 1° 56' 47"
R = 970.00'
L = 32.95'
T = 16.48'
CH = 32.95'
CB = N 03° 20' 20" E

(B) CURVE DATA
Δ = 14° 49' 09"
R = 857.70'
L = 221.84'
T = 111.54'
CH = 221.22'
CB = N 11° 32' 23" E

(C) CURVE DATA
Δ = 12° 50' 24"
R = 875.00'
L = 196.09'
T = 98.46'
CH = 195.68'
CB = S 10° 56' 48" W

(D) CURVE DATA
Δ = 10° 36' 28"
R = 970.00'
L = 179.58'
T = 90.05'
CH = 179.33'
CB = N 09° 36' 57" E

(E) CURVE DATA
Δ = 6° 45' 58"
R = 985.00'
L = 116.32'
T = 58.23'
CH = 116.25'
CB = N 24° 31' 50" E

(F) CURVE DATA
Δ = 4° 10' 47"
R = 1568.07'
L = 114.39'
T = 57.22'
CH = 114.36'
CB = S 25° 49' 26" W

(G) CURVE DATA
Δ = 10° 39' 45"
R = 870.00'
L = 161.90'
T = 81.19'
CH = 161.67'
CB = S 22° 34' 57" W

(H) CURVE DATA
Δ = 5° 01' 15"
R = 970.00'
L = 85.00'
T = 42.53'
CH = 84.97'
CB = S 06° 49' 21" W

CERTIFICATION OF SURVEY

I, RICHARD TONELLATO, HEREBY STATE THAT I AM A PROFESSIONAL LAND SURVEYOR OF THE STATE OF ILLINOIS; THAT THE SURVEY OF BADER ROAD (F.A.S. RTE. 454) WAS MADE BY ME OR UNDER MY DIRECT SUPERVISION; AND THAT THE PLAT HEREON IS IN ACCORDANCE WITH APPLICABLE SECTIONS OF THE LAND ACQUISITION AND POLICIES AND PROCEDURES MANUAL, OF THE DEPARTMENT'S DISTRICT POLICIES.

DATE: _____ BY: _____

ILLINOIS PROFESSIONAL LAND SURVEYOR NO. 035-002590



EXPIRES: 11/30/2010
GREENE & BRADFORD, INC.

LEGEND

-----	CENTERLINE (EXISTING)
-----	CENTERLINE (PROPOSED)
-----	RIGHT OF WAY LINE (EXISTING)
-----	RIGHT OF WAY LINE (PROPOSED)
	TEMPORARY CONSTRUCTION EASEMENT
■	STONE

GREENE & BRADFORD, INC.
OF SPRINGFIELD
SURVEYING & ENGINEERING
1000 N. UNIVERSITY AVENUE
SPRINGFIELD, ILLINOIS 62761
TEL: 217-223-1100
FAX: 217-223-1101
WWW.GRENE-AND-BRADFORD.COM

FILE NAME J:\07258\CADD\CAD\Drawings\07258-sht-rows\m.dgn	USER NAME = frankv	DESIGNED - DG	REVISED -	RIGHT OF WAY PLANS	F.A.S. RTE. 454	SECTION 04-00070-00-BR	COUNTY SCHUYLER	TOTAL SHEETS 30	SHEET NO. 7	
G&B PROJECT: 07258	PLOT SCALE = 50.0000' / in. PLOT DATE = 9/18/2009	CHECKED - RT	DATE - 7/06/09	STATE OF ILLINOIS DEPARTMENT OF TRANSPORTATION	PROJECT BRS-0454(103)	JOB NO.	SCALE: 1"=50'	SHEET NO. 1 OF 2 SHEETS	STA. 0-73.63 TO STA. 9+75.00	CONTRACT NO. 93499
PLOT DRIVER = V81.TDS700.PS.LOCAL.IDOT.plt				FED. ROAD DIST. NO. ILLINOIS FED. AID PROJECT BRS-0454(103)						