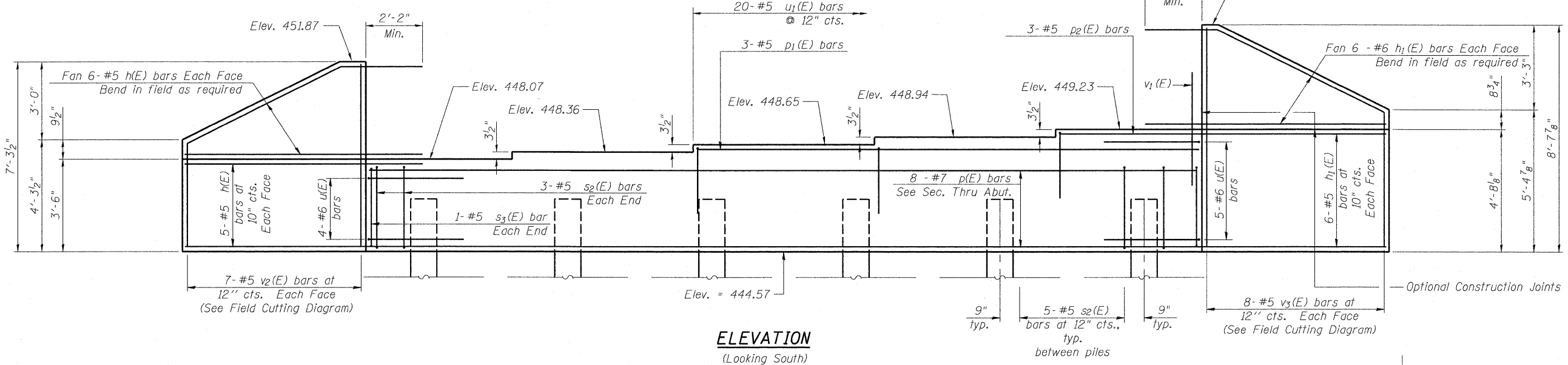
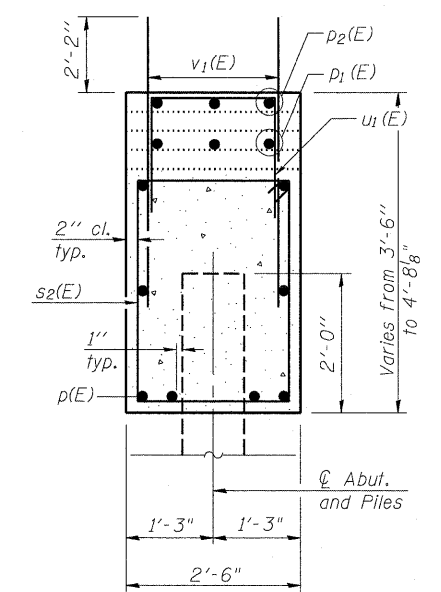


**STATE OF ILLINOIS  
DEPARTMENT OF TRANSPORTATION**

Notes:  
Pour steps monolithically with cap.



**ELEVATION**  
(Looking South)



**SEC. THRU ABUT.**  
**BILL OF MATERIAL**

Bar	No.	Size	Length	Shape
h(E)	22	#5	9'-2"	▬
h1(E)	24	#5	9'-8"	▬
p(E)	8	#7	31'-7"	▬
p1(E)	3	#5	19'-0"	▬
p2(E)	3	#5	4'-9"	▬
s2(E)	31	#5	11'-5"	▬
s3(E)	2	#5	11'-9"	▬
u(E)	9	#6	10'-2"	▬
u1(E)	20	#5	7'-2"	▬
v1(E)	63	#5	4'-4"	▬
v2(E)	7	#5	10'-10"	▬
v3(E)	8	#5	13'-5"	▬
Structure Excavation		Cu. Yd.	59	
Concrete Structures		Cu. Yd.	15.6	
Reinforcement Bars, Epoxy Coated		Pound	2,200	
Furnishing - Metal Shell Piles, 12" ø x 0.25"		Foot	200	
Driving Piles		Foot	200	
Test Pile, Metal Shells		Each	1	

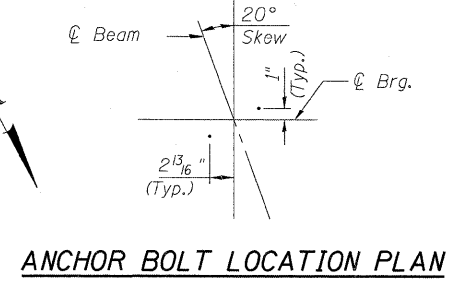
For details of piles see sheet 13 of 17.

**PILE DATA**

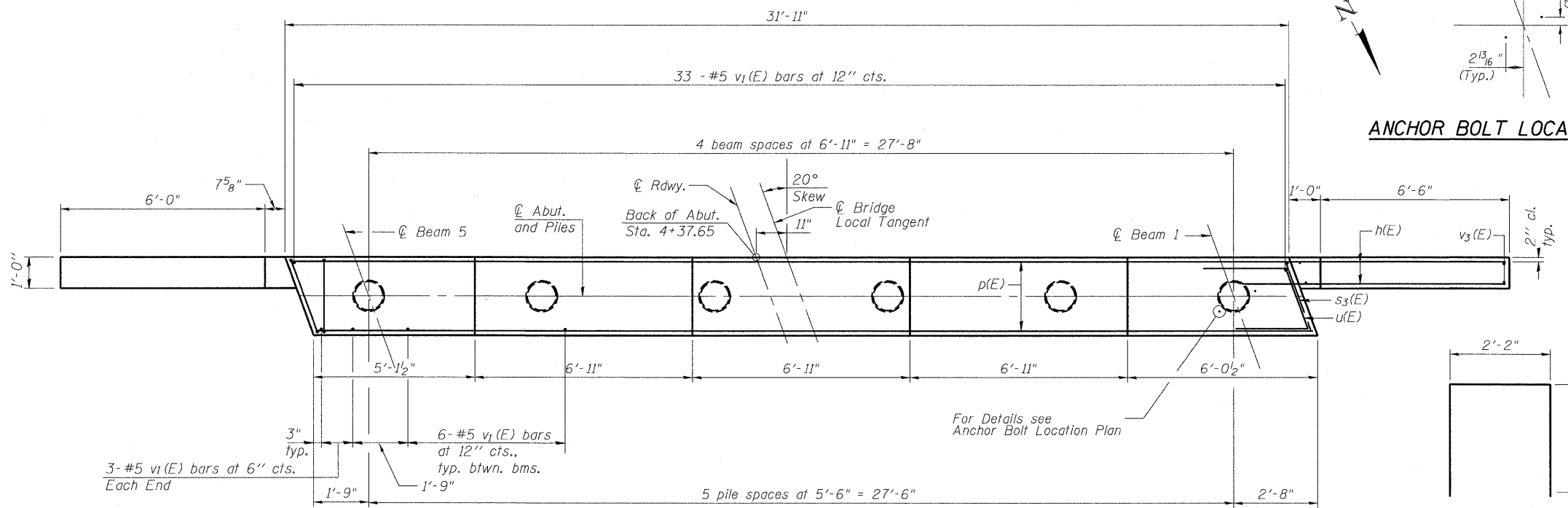
Type: Metal Shell - 12" Dia. x 0.25" wall  
Nominal Required Bearing: 321 Kips  
Factored Resistance Available: 161 Kips  
Est. Length: 40'  
No. Production Piles: 5  
No. Test Piles: 1

DESIGNED	NIEWINSKI
CHECKED	TRELLO
DRAWN	VERENSKI
CHECKED	TRELLO

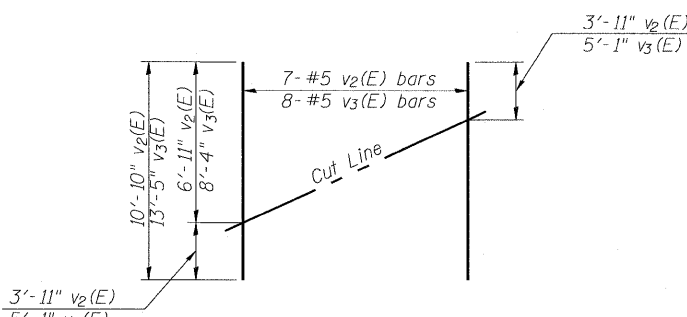
G&B PROJECT: PLOT DRIVER = VB1.TDS700.PS.LOCAL.IDOT.pltcfp  
FILE NAME = J:\07258\CADD\CADShets\SN 085-3055\085-07258-Sht-SAbutment.dgn  
PLOT DATE = 9/18/2009 PLOT SCALE = 2:2 1/4 1/4" = 1' in. USER NAME = frankw



**ANCHOR BOLT LOCATION PLAN**

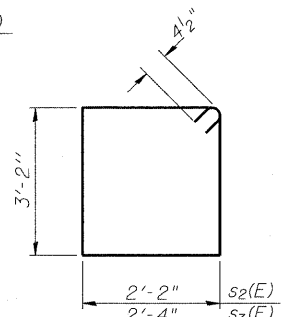


**PLAN**

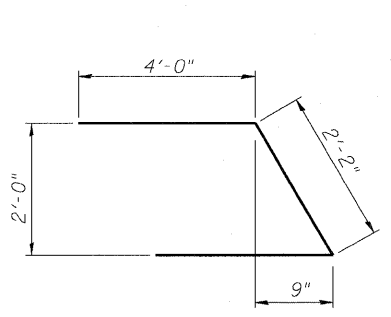


**FIELD CUTTING DIAGRAM**

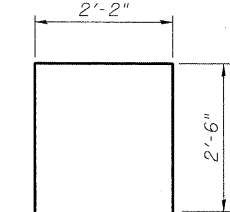
Order v2(E) and v3(E) full length. Cut as shown and use remainder of bars in opposite face.



**BARS s2(E) & s3(E)**



**BAR u(E)**



**BAR u1(E)**

SHEET NO. 10 17 SHEETS	F.A.S. RTE. 454	SECTION 04-0070-00-BR	COUNTY SCHUYLER	TOTAL SHEETS 30	SHEET NO. 18
	CONTRACT NO. 93499				
	FED. ROAD DIST. NO. ILLINOIS FED. AID PROJECT				

**SOUTH ABUTMENT  
F.A.S. ROUTE 454  
SECTION 04-0070-00-BR  
SCHUYLER COUNTY  
STATION 4+79.00  
S.N. 085-3055**