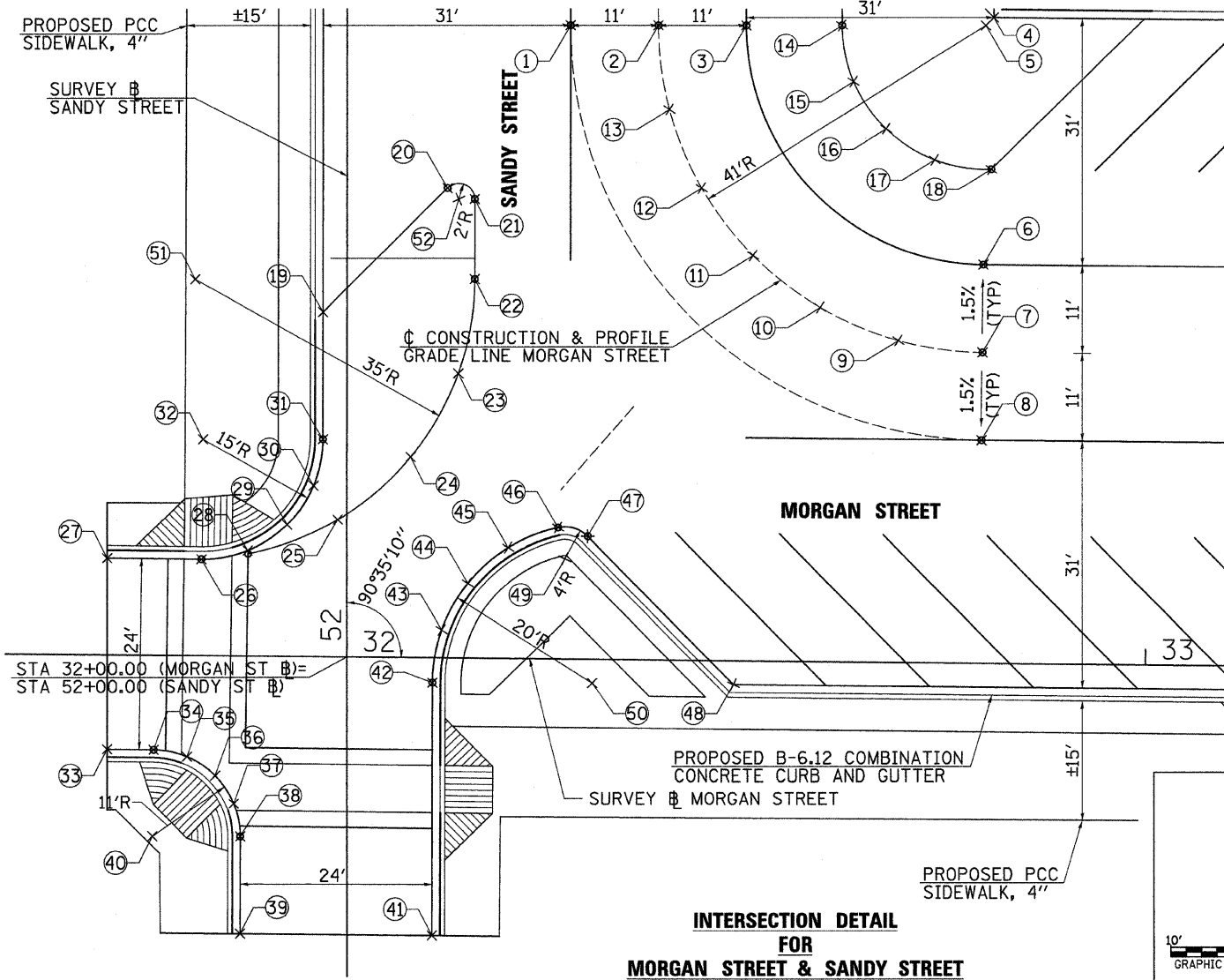


PT	MORGAN #	SANDY #	ELEVATION
1	32+27.20, 79.47' LT	52+79.20, 28.00' RT	615.56
2	32+38.20, 79.58' LT	52+79.20, 39.00' RT	615.73
3	32+49.20, 79.69' LT	52+79.20, 50.00' RT	615.56
4	32+80.19, 81.00' LT	52+80.19, 81.00' RT	614.32
5	32+79.20, 80.00' LT	52+79.20, 80.00' RT	-
6	32+79.20, 50.00' LT	52+49.20, 79.69' RT	615.08
7	32+79.20, 39.00' LT	52+38.20, 79.58' RT	615.25
8	32+79.20, 28.00' LT	52+27.20, 79.47' RT	615.08
9	32+68.65, 4.038' LT	52+39.68, 69.05' RT	615.36
10	32+58.82, 44.42' LT	52+43.83, 59.26' RT	615.47
11	32+50.35, 50.86' LT	52+50.35, 50.86' RT	615.56
12	32+43.83, 59.26' LT	52+58.82, 44.23' RT	615.63
13	32+39.69, 69.05' LT	52+68.65, 40.38' RT	615.68
14	32+61.20, 79.82' LT	52+79.20, 62.00' RT	615.08
15	32+62.71, 72.79' LT	52+72.15, 63.44' RT	615.04
16	32+66.84, 66.91' LT	52+66.23, 67.52' RT	614.98
17	32+72.95, 63.12' LT	52+62.38, 73.59' RT	614.89
18	32+80.06, 62.02' LT	52+61.21, 80.68' RT	614.79
19	31+96.57, 43.20' LT	52+43.24, 3.00' LT	614.81
20	32+11.99, 58.94' LT	52+58.83, 12.59' RT	615.15
21	32+15.42, 57.56' LT	52+57.41, 16.00' RT	615.20
22	32+15.53, 47.51' LT	52+47.36, 16.00' RT	615.15
23	32+13.58, 35.65' LT	52+35.52, 13.94' RT	615.07
24	32+07.74, 25.15' LT	52+25.08, 7.99' RT	614.88
25	31+98.70, 17.24' LT	52+17.26, 1.14' LT	614.58
26	31+81.69, 12.12' LT	52+12.31, 18.20' LT	614.20

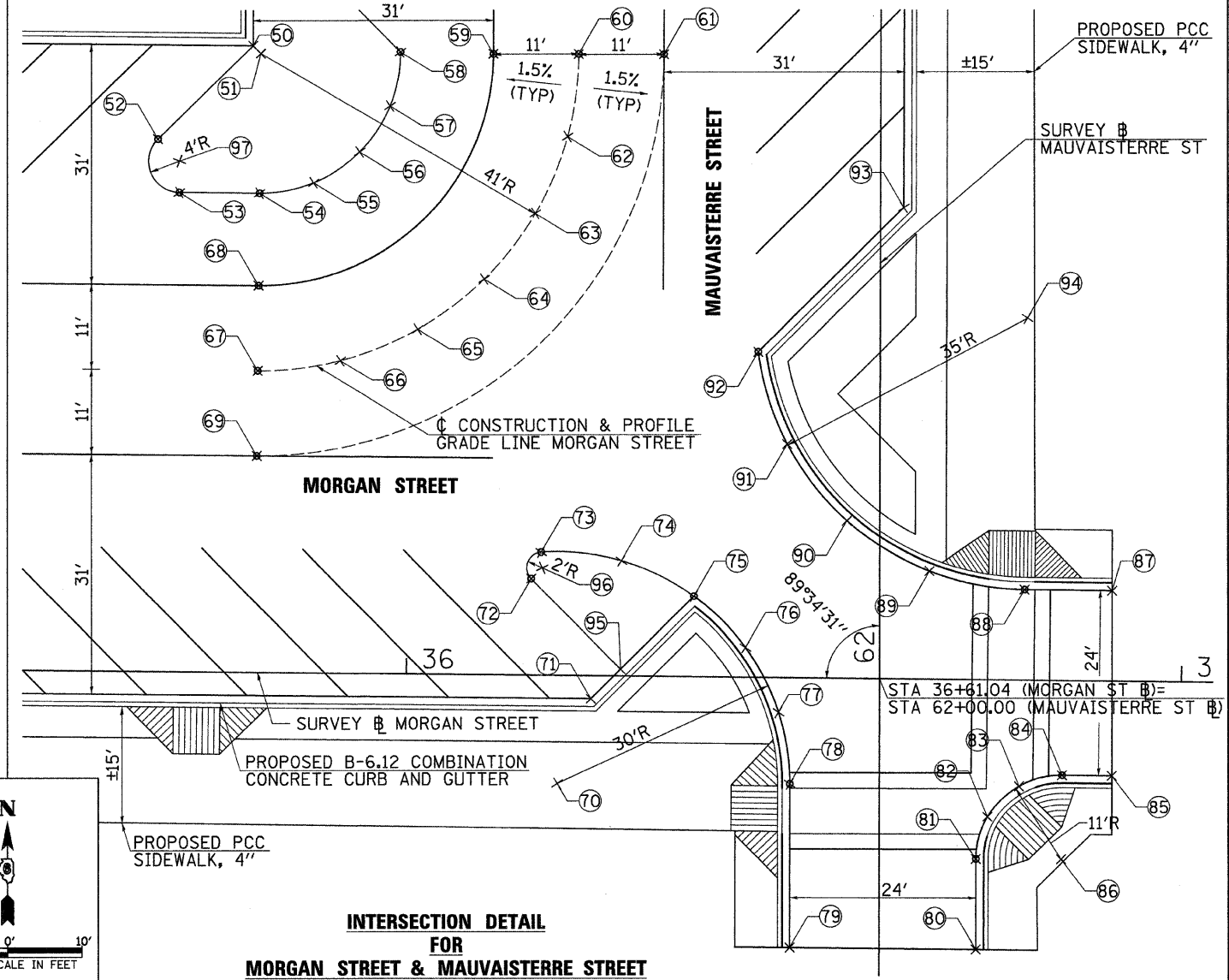
PT	MORGAN #	SANDY #	ELEVATION
27	31+69.88, 12.15' LT	52+12.47, 30.00' LT	614.16(E)
28	31+87.48, 13.26' LT	52+13.40, 12.40' LT	614.22
29	31+92.38, 16.55' LT	52+16.63, 7.46' LT	614.40
30	31+95.63, 21.47' LT	52+21.52, 4.16' LT	614.63
31	31+96.73, 27.27' LT	52+27.31, 3.00' LT	614.76
32	31+81.73, 27.12' LT	52+27.31, 18.00' LT	-
33	31+70.13, 11.85' RT	51+88.47, 30.00' LT	614.17(E)
34	31+75.95, 11.87' RT	51+88.39, 24.19' LT	614.20
35	31+80.13, 12.71' RT	51+87.51, 20.01' LT	614.18
36	31+83.67, 15.07' RT	51+85.11, 16.49' LT	614.09
37	31+86.05, 18.61' RT	51+81.55, 14.15' LT	613.98
38	31+86.91, 22.78' RT	51+77.36, 13.33' LT	613.86
39	31+87.01, 35.00' RT	51+65.15, 13.36' LT	613.48
40	31+75.91, 22.87' RT	51+77.39, 24.33' LT	-
41	32+11.01, 35.00' RT	51+64.90, 10.64' RT	613.40
42	32+10.76, 3.15' RT	51+96.75, 10.72' RT	614.15
43	32+11.85, 3.50' RT	52+03.35, 11.87' RT	614.31
44	32+15.08, 9.41' RT	52+09.26, 15.16' RT	614.47
45	32+20.09, 13.91' RT	52+13.72, 20.22' RT	614.62
46	32+26.31, 16.50' RT	52+16.24, 26.26' RT	614.70
47	32+30.03, 15.43' RT	52+15.13, 30.17' RT	614.61
48	32+48.45, 3.00' RT	51+96.51, 48.41' RT	613.72
49	32+27.20, 12.60' LT	52+12.33, 27.32' RT	-
50	32+30.76, 3.00' RT	51+96.70, 30.72' RT	-
51	31+80.53, 47.15' LT	52+47.36, 19.00' LT	-
52	32+31.42, 57.54' LT	52+57.41, 14.00' RT	-

PT	MORGAN #	MAUVAISTERRE #	ELEVATION
50	35+79.43, 81.00' LT	62+81.61, 81.00' LT	611.72
51	35+80.44, 80.00' LT	62+80.60, 80.00' LT	-
52	35+67.26, 68.83' LT	62+69.53, 93.26' LT	612.12
53	35+70.09, 62.00' LT	62+62.68, 90.48' LT	612.24
54	38+80.44, 62.00' LT	62+62.60, 80.13' LT	612.15
55	35+87.41, 63.41' LT	62+63.95, 73.15' LT	612.04
56	35+93.30, 67.40' LT	62+67.91, 67.24' LT	612.00
57	35+97.17, 73.36' LT	62+73.84, 63.32' LT	612.02
58	35+98.44, 80.36' LT	62+80.83, 62.00' LT	612.10
59	36+10.44, 80.22' LT	62+80.60, 50.00' LT	612.34
60	36+21.44, 80.30' LT	62+80.60, 39.00' LT	612.50
61	36+32.44, 80.39' LT	62+80.60, 28.00' LT	612.34
62	36+20.11, 69.63' LT	62+69.94, 40.41' LT	612.41
63	36+16.05, 59.68' LT	62+60.01, 44.54' LT	612.34
64	36+09.54, 51.12' LT	62+51.50, 51.12' LT	612.33
65	36+01.03, 44.54' LT	62+44.99, 59.68' LT	612.37
66	35+91.10, 40.41' LT	62+40.93, 69.63' LT	612.46
67	35+80.44, 39.00' LT	62+39.60, 80.30' LT	612.58
68	35+80.44, 50.00' LT	62+50.60, 80.22' LT	612.42
69	35+80.44, 28.00' LT	62+28.60, 80.39' LT	612.42
70	36+19.61, 14.00' RT	61+86.31, 41.53' LT	-
71	36+23.84, 3.00' RT	61+97.28, 37.22' LT	611.10
72	36+16.00' 12.50' LT	62+12.84, 44.95' LT	611.54

PT	MORGAN #	MAUVAISTERRE #	ELEVATION
73	36+17.25, 15.91' LT	62+16.24, 43.66' LT	611.64
74	36+27.61, 14.91' LT	62+15.17, 33.32' LT	611.55
75	36+37.00, 10.44' LT	62+10.63, 23.96' LT	611.41
76	36+43.71, 3.86' LT	62+04.00, 17.29' LT	611.31
77	36+48.06, 4.48' RT	61+95.62, 13.01' LT	611.18
78	36+49.61, 13.75' RT	61+86.34, 11.53' LT	611.00
79	36+49.78, 35.00' RT	61+65.09, 11.51' LT	610.58
80	36+73.78, 35.00' RT	61+64.91, 12.49' RT	610.54
81	36+73.69, 23.34' RT	61+76.57, 12.48' RT	610.80
82	36+75.13, 17.80' RT	61+82.10, 13.96' RT	610.90
83	36+79.17, 13.73' RT	61+86.14, 18.03' RT	610.91
84	36+84.70, 12.25' RT	61+87.58, 23.57' RT	610.85
85	36+91.13, 12.58' RT	61+87.52, 30.00' RT	610.74
86	36+84.69, 23.25' RT	61+76.58, 23.48' RT	-
87	36+90.95, 11.74' LT	62+11.53, 30.00' RT	610.77
88	36+79.65, 11.76' LT	62+11.62, 18.70' RT	610.86
89	36+67.36, 14.00' LT	62+13.96, 6.43' RT	611.08
90	36+56.64, 20.42' LT	62+20.46' 4.25' LT	611.30
91	36+48.86, 30.19' LT	62+30.29, 11.95' LT	611.45
92	36+45.01, 42.07' LT	62+42.20, 15.72' LT	611.60
93	36+63.58, 60.93' LT	62+60.92, 3.00' RT	611.40
94	36+79.69, 46.76' LT	62+46.62, 19.00' RT	-
95	36+27.63, 0.87' LT	62+01.12, 33.40' LT	611.19
96	36+17.41, 13.91' LT	62+14.24, 43.52' LT	-
97	35+70.09, 66.00' LT	62+66.68, 90.45' LT	-



**INTERSECTION DETAIL
FOR
MORGAN STREET & SANDY STREET**



**INTERSECTION DETAIL
FOR
MORGAN STREET & MAUVAISTERRE STREET**

FILE NAME =
VA\2522\Plaza Plans\2522\010.dgn

USER NAME = jwhite
PLOT SCALE = 10.0000' / IN.
PLOT DATE = 9/28/2009

DESIGNED - JRB
DRAWN - JMO
CHECKED - JRB
DATE - 09/25/09

REVISED -
REVISED -
REVISED -
REVISED -

**STATE OF ILLINOIS
DEPARTMENT OF TRANSPORTATION**

**CITY OF JACKSONVILLE DOWNTOWN PLAZA STREETS RECONSTRUCTION
MORGAN STREET INTERSECTION DETAILS**

SCALE: 1" = 10' SHEET NO. OF SHEETS STA. TO STA.

F.A.U. RTE.	SECTION	COUNTY	TOTAL SHEETS	SHEET NO.
N/A	05-00121-00-PV	MORGAN	74	34
CONTRACT NO. 93504				
FED. ROAD DIST. NO. 6 ILLINOIS FED. AID PROJECT				