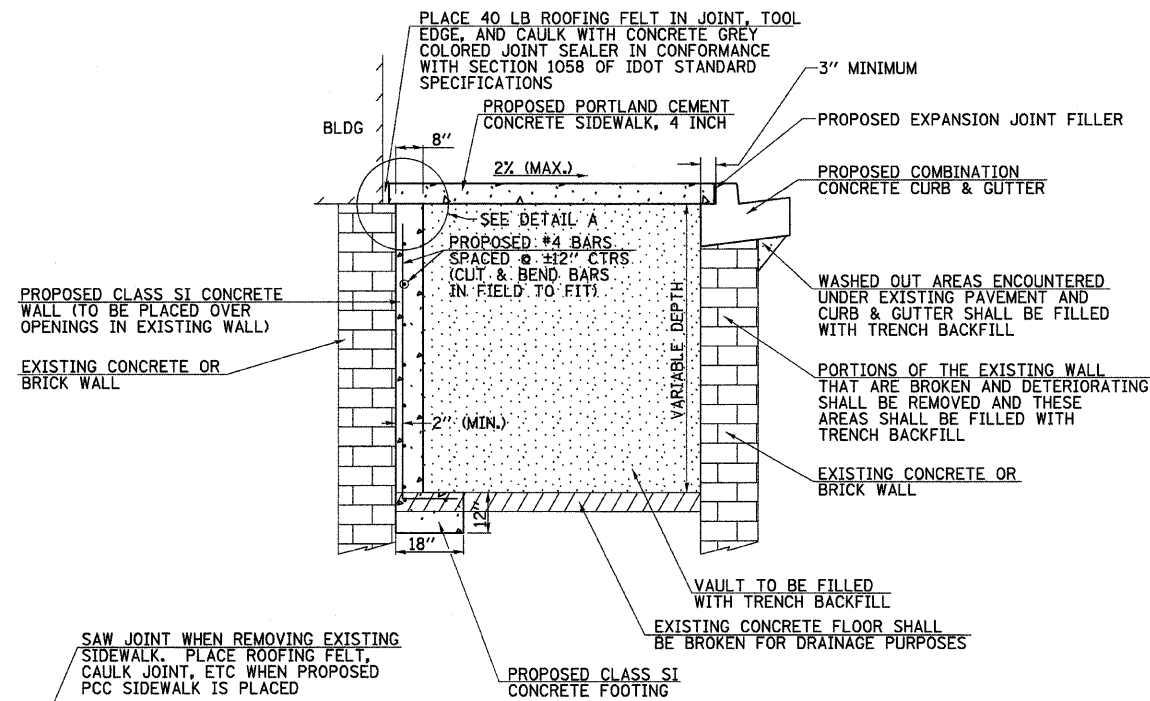
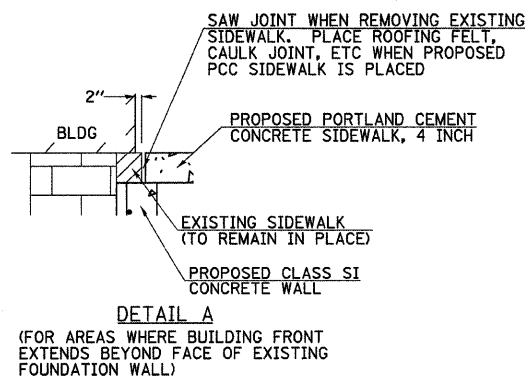


FRONT VIEW



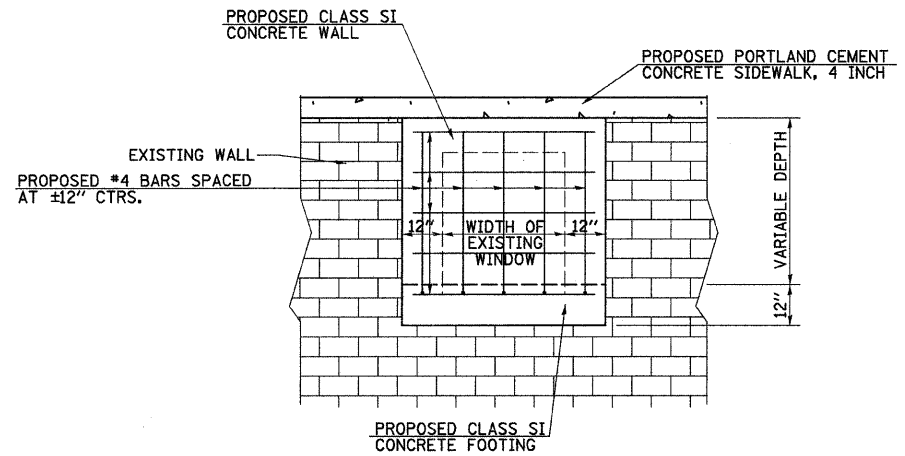
SIDE VIEW



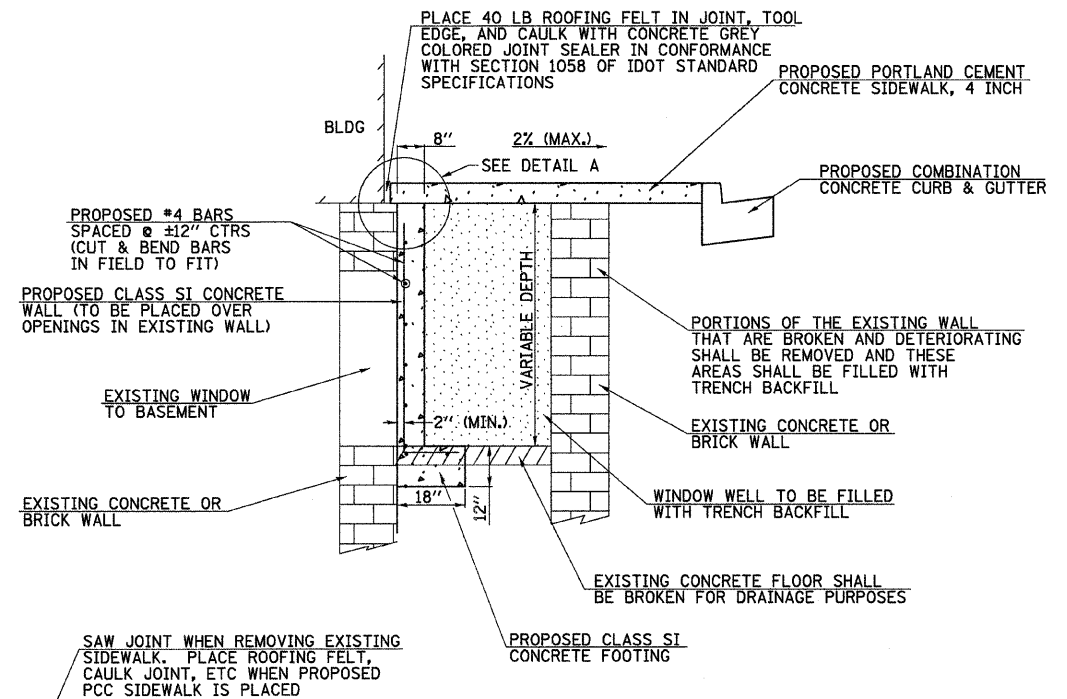
DETAIL A  
(FOR AREAS WHERE BUILDING FRONT EXTENDS BEYOND FACE OF EXISTING FOUNDATION WALL)

NOTES:  
CONCRETE SHALL BE POURED IN SUCH A MANNER THAT NO ADDITIONAL PRESSURE WILL BE EXERTED ON THE EXISTING WALL.  
METAL FORMS SHALL BE BRACED SUFFICIENTLY TO PREVENT DISTORTION AND METAL SNAP TIES SHALL REMAIN UNDISTURBED AFTER THE FORMS ARE REMOVED.

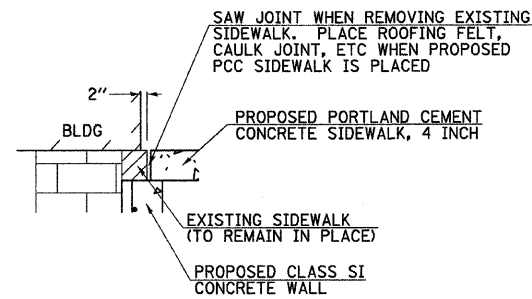
DETAIL OF FILLING EXISTING VAULTS AND BASEMENTS WITHIN RIGHT-OF-WAY



FRONT VIEW



SIDE VIEW



DETAIL A  
(FOR AREAS WHERE BUILDING FRONT EXTENDS BEYOND FACE OF EXISTING FOUNDATION WALL)

NOTES:  
CONCRETE SHALL BE POURED IN SUCH A MANNER THAT NO ADDITIONAL PRESSURE WILL BE EXERTED ON THE EXISTING WALL.  
METAL FORMS SHALL BE BRACED SUFFICIENTLY TO PREVENT DISTORTION AND METAL SNAP TIES SHALL REMAIN UNDISTURBED AFTER THE FORMS ARE REMOVED.

DETAIL OF FILLING EXISTING WINDOW WELLS

FILE NAME = V:\2522\Plaza Plans\2522z085.dgn	USER NAME = jwhite	DESIGNED - JRB	REVISED -	<b>STATE OF ILLINOIS DEPARTMENT OF TRANSPORTATION</b>	<b>CITY OF JACKSONVILLE DOWNTOWN PLAZA STREETS RECONSTRUCTION SPECIAL DETAILS</b>				F.A. RTE. N/A	SECTION 05-00121-00-PV	COUNTY MORGAN	TOTAL SHEETS 74	SHEET NO. 58
PLOT SCALE = 2.0036' / IN.		DRAWN - JCW	REVISED -		SCALE: N/A	SHEET NO. -	OF -	SHEETS	STA. -	TO STA. -	CONTRACT NO. 93504		
PLOT DATE = 9/28/2009		CHECKED -	REVISED -						FED. ROAD DIST. NO.	ILLINOIS FED. AID PROJECT			
DATE - 09/25/09		REVISOR -	REVISED -										