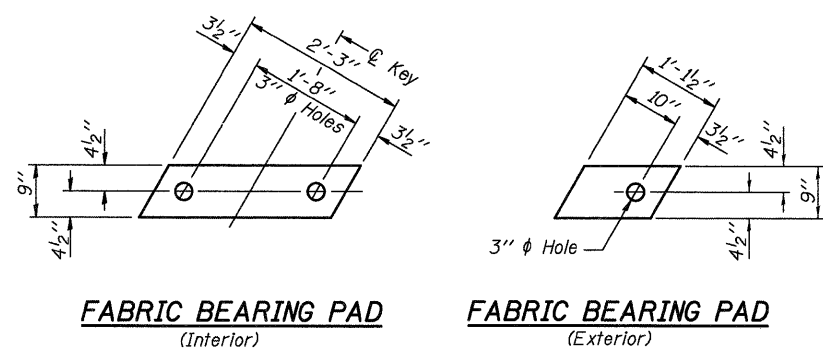


STATE OF ILLINOIS
DEPARTMENT OF TRANSPORTATION

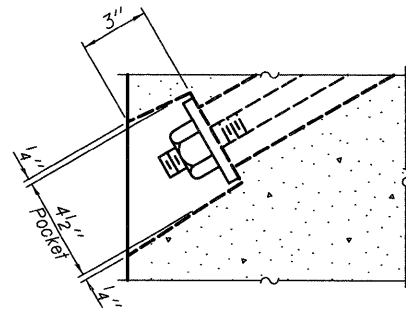


FABRIC BEARING PAD
(Interior)

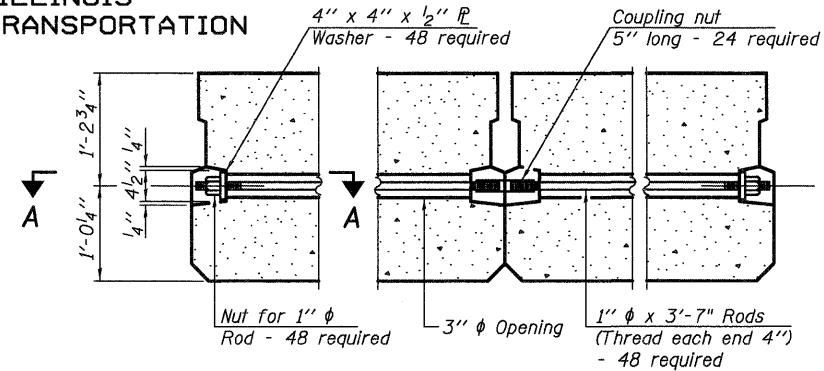
FABRIC BEARING PAD
(Exterior)

FIXED

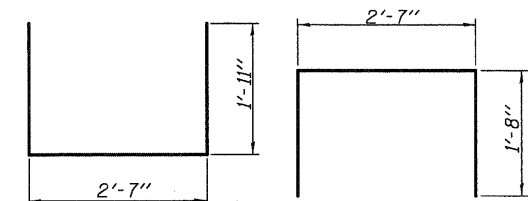
Note: Omit holes when using expansion bearings.



SECTION A-A

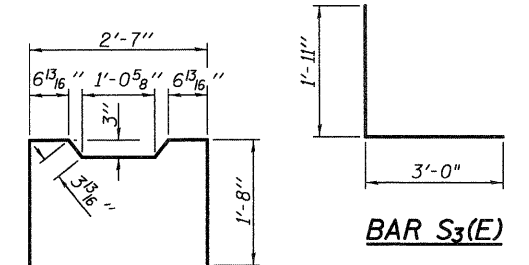


TYPICAL TRANSVERSE TIE ASSEMBLY



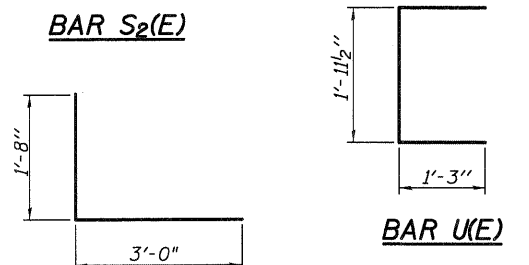
BAR S(E)

BAR S1(E)



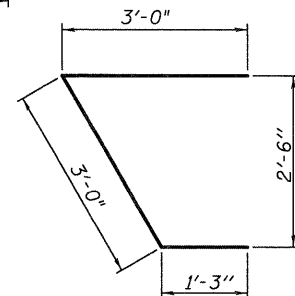
BAR S2(E)

BAR S3(E)

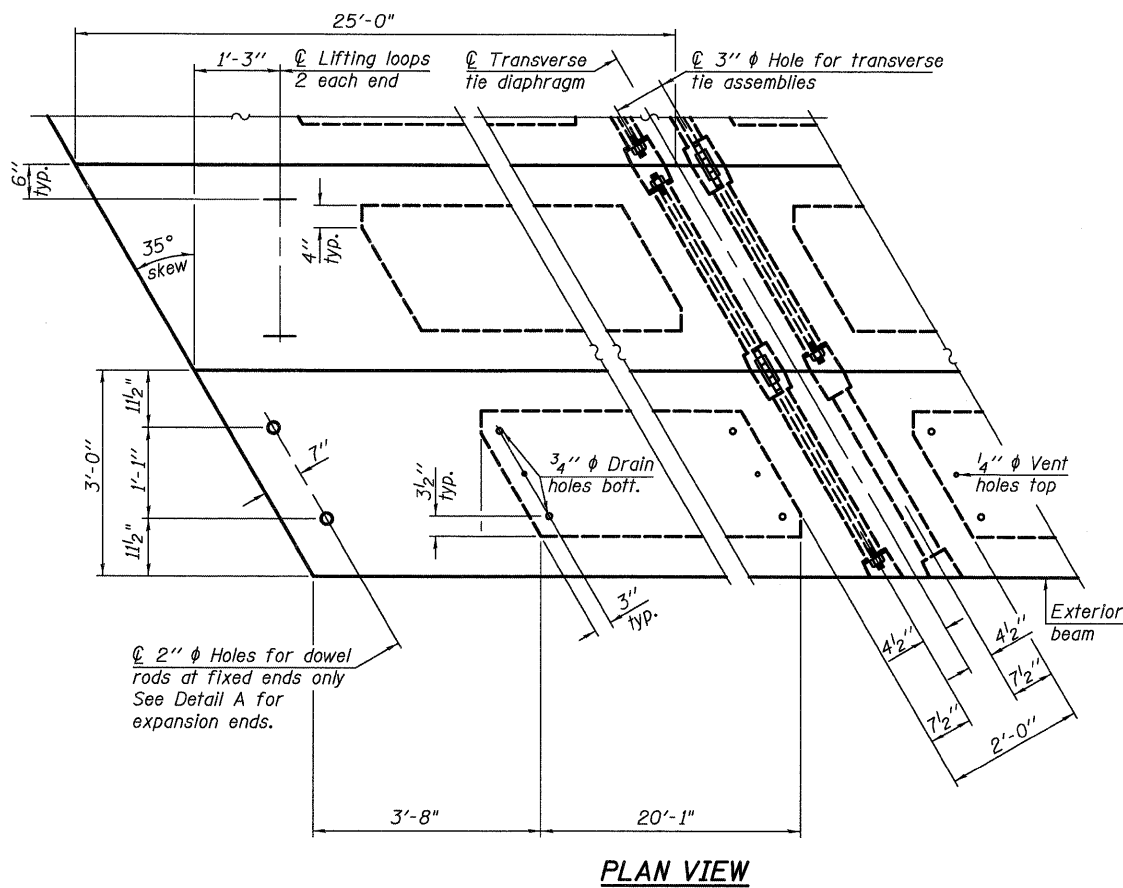


BAR S4(E)

BAR U(E)



BAR U1(E)

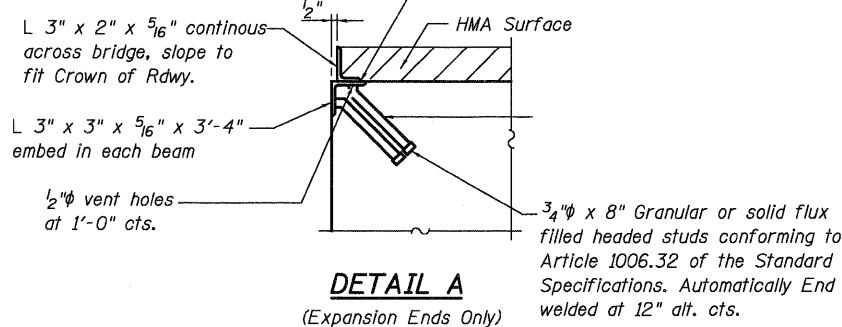


PLAN VIEW

Note: Connect beams in pairs with the transverse tie configuration shown.

DESIGNED - CMV
CHECKED - SDS
DRAWN - DLH
CHECKED - CMV

WHKS & CO. ENGINEERING
7018 KINGSMILL CT., SPRINGFIELD, IL (217) 483-9457 DESIGN FIRM #184001036

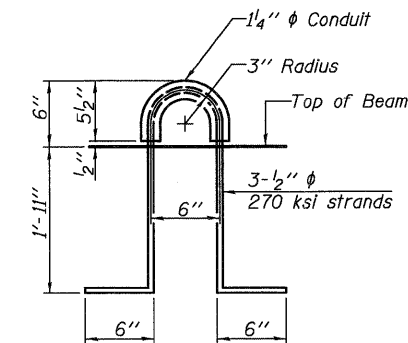


DETAIL A
(Expansion Ends Only)

Note: After fabrication all surfaces of the steel L's shall be given one shop coat of paint. Cost included with PPC Deck Beams.

NOTES

Prestressing steel shall be uncoated high strength, low relaxation 7-wire strand, Grade 270. The nominal diameter shall be 1/2" and the nominal cross-sectional area shall be 0.153 sq. in. The 1" rods in the transverse tie assembly shall be tightened to a snug fit and the threads set. Pockets on exterior faces of bridge shall be filled with grout after transverse tie assembly is in place. Reinforcement bars shall conform to ASTM A 706, Grade 60. (See Special Provisions). Two 1/2" fabric adjusting shims of the dimensions of the exterior bearing pad shall be provided for each bearing pad location. A minimum 2 1/2" lifting pin shall be used to engage the lifting loops during handling. Corrosion Inhibitor, per Article 1020.05(b)(12) and 1021.06 of the Standard Specifications, shall be used in the concrete for precast prestressed concrete deck beams. Compressive strength of prestressed concrete, f'c, shall be 6000 psi. Compressive strength of prestressed concrete at release, f'cl, shall be 5000 psi.



LIFTING LOOP DETAIL

BILL OF MATERIAL

Precast Prestressed Conc. Deck Bms. (27" depth)	Sq. Ft.	4,050
---	---------	-------

**27" X 36" PPC DECK BEAM DETAILS
PAWNEE ROAD (FAS 1622)
OVER BRUSH CREEK**

SHEET NO. 3	F.A.S. RTE. 1622	SECTION 07-00100-00-BR	COUNTY SANGAMON	TOTAL SHEETS 16	SHEET NO. 7
12 SHEETS	S.N. 084-3037		CONTRACT NO. 93506		
FED. ROAD DIST. NO. - ILLINOIS FED. AID PROJECT					