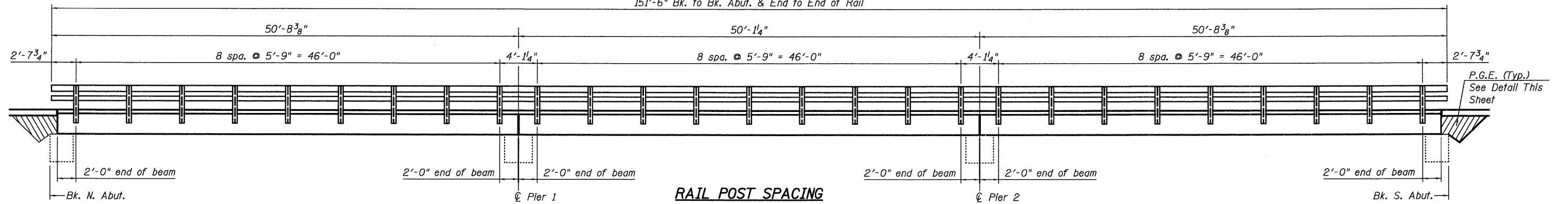
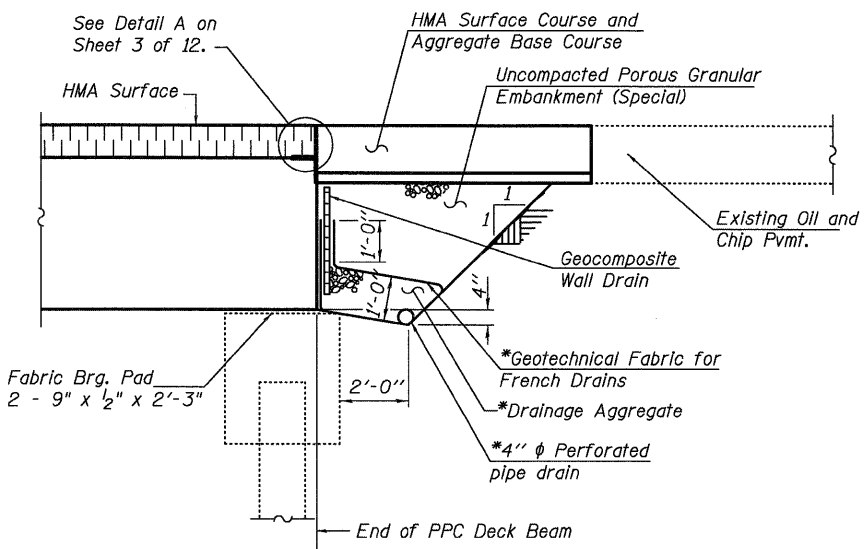


STATE OF ILLINOIS
DEPARTMENT OF TRANSPORTATION
151'-6" Bk. to Bk. Abut. & End to End of Rail

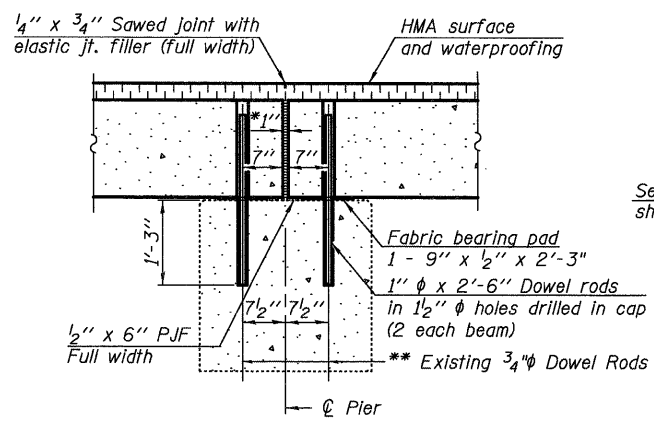


RAIL POST SPACING



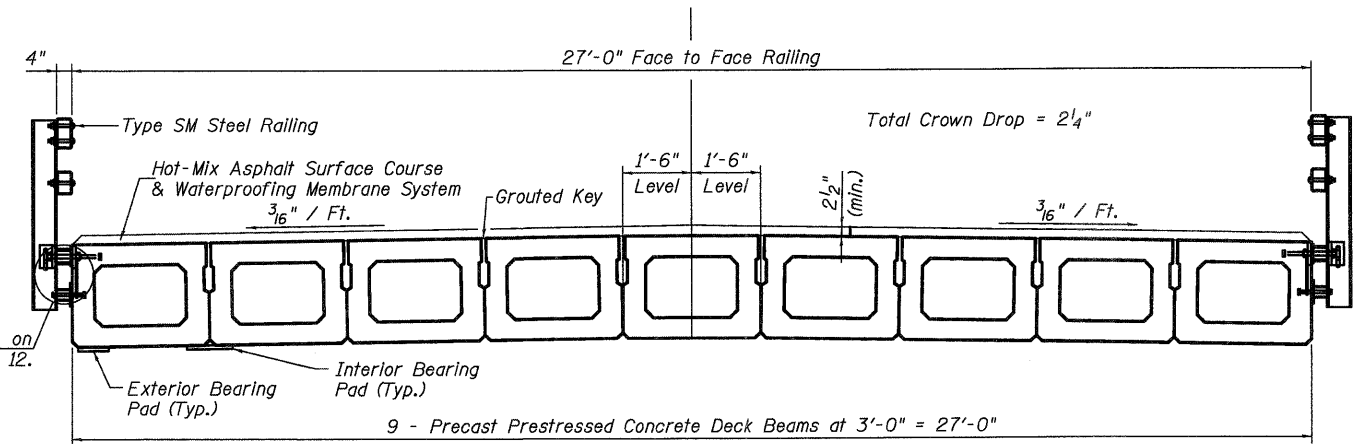
SECTION THRU ABUTMENT
(Horiz. dim. @ Rt. L's)

*Included in the cost of Pipe Underdrains for Structures.
Note:
All drainage system components shall extend to 2'-0" from the end of each wingwall except an outlet pipe shall extend until intersecting with the side slopes. The pipes shall drain into concrete headwalls.



SECTION THRU FIXED PIER

* 1" Jt. shall be filled with non-shrink grout. 1" dimension may vary to accommodate tolerance in beam lengths.
** Existing 3/4" dowel rods extending from pier cap shall be cut off flush with top of bearing seat and covered with a layer of epoxy grout. Cost included with Precast Prestressed Concrete Deck Beams (27" Depth).



PROPOSED CROSS SECTION

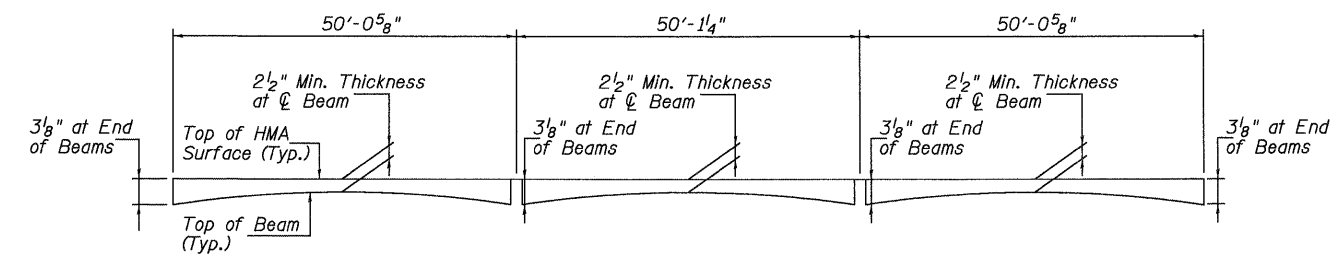
Notes:
After beams have been erected, holes shall be drilled into substructure and anchor dowels placed. Dowel holes shall be filled with non-shrink grout to top of beam and allowed to cure min. 24 hrs. prior to grouting the shear keys.
Porous Granular Embankment, Geocomposite Wall Drain, Geotechnical Fabric and Perforated Pipe Drain shall be constructed after the beams are in place.
All horizontal dimensions are along ϕ roadway.
See sheet 3 of 12 for bearing pad details.

TOTAL BILL OF MATERIAL

ITEM	UNIT	QUANTITY
Structure Excavation	Cu. Yd.	39
Geocomposite Wall Drain	Sq. Yd.	20
Porous Granular Embankment (Special)	Cu. Yd.	33
Pipe Underdrains for Structures, 4"	Foot	80

DESIGNED - CMV
CHECKED - SDS
DRAWN - DLH
CHECKED - CMV

WHKS & CO.
ENGINEERING
7018 KINGSMILL CT.,
SPRINGFIELD, IL
(217) 483-9457
DESIGN FIRM #184001036



HOT-MIX ASPHALT SURFACE PROFILE
Includes Waterproofing Membrane System

SUPERSTRUCTURE DETAILS
PAWNEE ROAD (FAS 1622)
OVER BRUSH CREEK

SHEET NO. 4 12 SHEETS	F.A.S. RTE.	SECTION	COUNTY	TOTAL SHEETS	SHEET NO.
	1622	07-00100-00-BR	SANGAMON	16	8
S.N. 084-3037			CONTRACT NO. 93506		
FED. ROAD DIST. NO. - ILLINOIS FED. AID PROJECT					