

STATE OF ILLINOIS
DEPARTMENT OF TRANSPORTATION

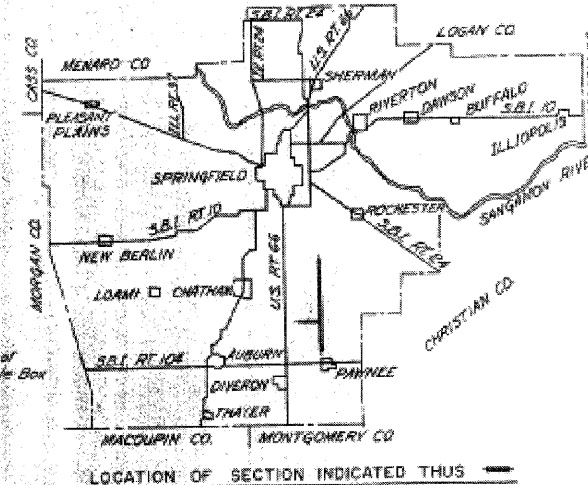
STATE OF ILLINOIS
DEPARTMENT OF PUBLIC WORKS AND BUILDINGS
DIVISION OF HIGHWAYS
PLANS FOR PROPOSED
FEDERAL-AID SECONDARY PROJECT

PROJECT NO.	SECTION	SHEET NO.
1622	07-00100-00-BR	19

INDEX OF SHEETS

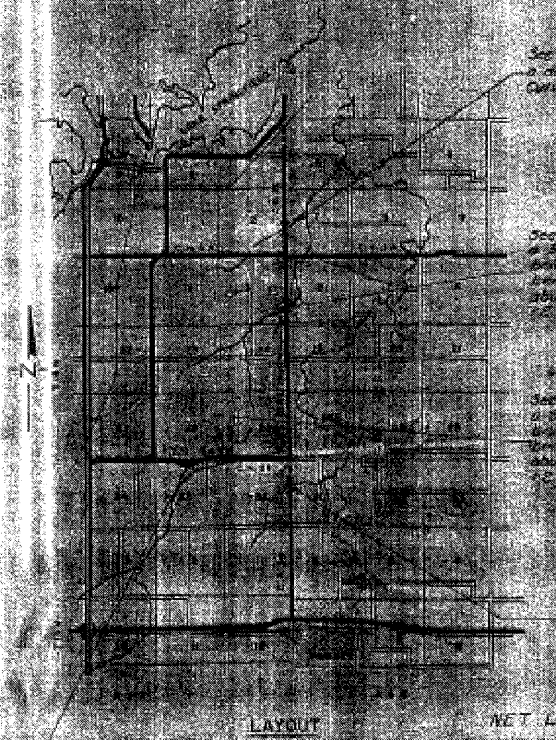
- 1 COVER SHEET
- 2-6 PLAN & PROFILE SHEETS
- 7 CULVERT DETAILS STA. 86+75
- 8-11 BRIDGE PLANS STA. 144+20
- 12 CULVERT DETAILS STA. 290+25
- 13 CULVERT DETAILS STA. 33+79
- 14-17 BRIDGE PLANS STA. 58+75
- 18 STANDARD 213
- 19 STANDARDS 1971-3, 1972-1, 2126-1, S.L.R. #2-F

F.A.S. ROUTE 1622
1643 SECTION 100-B SANGAMON COUNTY
PROJECT S-1642-1(I)
S-1643-1(I)



QUANTITIES

S-1642-1(I)	S-1643-1(I)	Section 100-B	UNIT OF MEASURE	PAY ITEM	CODE NUMBER
2,570	2,540	4,810	CYDS.	EARTH EXCAVATION	011001
1,710	6,750	9,060	CYDS.	CHANNEL EXCAVATION	012001
44	43	87	TON	BITUMINOUS CONCRETE SURFACE COURSE, SUBCLASS 1-11	048007
2	1	3	EACH	REMOVAL OF EXISTING STRUCTURES	049001
-	16	16	EACH	EXPANSION BOLTS (3/4 INCH)	049008
4,050	3,769	8,019	SQ. FT.	PRECAST PRESTRESSED CONCRETE BRIDGE DECK	051010
508.7	89.1	597.8	CYDS.	CLASS X CONCRETE	052003
85447	8420	93867	LBS.	REINFORCEMENT BARS	059001
288	312	600	LIN. FT.	FURNISHING CREOSOTED PILES, 20" x 36"	060005
312	-	312	LIN. FT.	FURNISHING CREOSOTED PILES, OVER 36"	060006
1	1	2	EACH	TEST PILES (TIMBER)	060007
600	312	1,112	LIN. FT.	DRIVING TIMBER PILES	060008
507	453	960	LIN. FT.	FURNISHING PRECAST CONCRETE PILES, 14"	060010
1	1	2	EACH	TEST PILES (PRECAST CONCRETE)	060012
507	453	960	LIN. FT.	DRIVING PRECAST CONCRETE PILES	060013
3	1	4	EACH	NAME PLATES	061001
284	278	562	LIN. FT.	ALUMINUM HANDRAIL	200004



See 100-B includes the construction of a double 12' x 8' Reinforced Concrete Box Culvert, Shew 301 @ Sta. 86+75

See 100-B includes the construction of a 4' x 30' precast prestressed concrete bridge deck, precast concrete pile bent piers and creosoted pile bent abutts, spans 3' x 30' @ Sta. 290+25, 24' x 30' @ Sta. 33+79

See 100-B includes the construction of a 4' x 30' precast prestressed concrete bridge deck, precast concrete pile bent piers and creosoted pile bent abutts, spans 3' x 30' @ Sta. 290+25, 24' x 30' @ Sta. 33+79

See 100-B includes the construction of a double 10' x 7' Reinforced Concrete Box Culvert, Shew 451 @ Sta. 290+25

DESIGNED JULY 7, 1961
H. B. B...
ENGINEER IN CHARGE OF BRIDGE & TRAFFIC STRUCTURES

ILLINOIS STRUCTURAL NO. 2134

NET LENGTH PROJ. S-1642-1(I) = 212.64 FT = 0.040 MILES
NET LENGTH PROJ. S-1643-1(I) = 154.50 FT = 0.029 MILES

PLANS SUBMITTED BY Lewis A. Lush
LEWIS A. LUSH
COUNTY SUPERINTENDENT OF HIGHWAYS

STATE OF ILLINOIS
DEPARTMENT OF PUBLIC WORKS AND BUILDINGS
DIVISION OF HIGHWAYS

SUBMITTED BY [Signature]
CHECKED BY [Signature]
APPROVED BY [Signature]
[Signature]
[Signature]

JOB NO. 21276

DESIGNED - CMV
CHECKED - SDS
DRAWN - DLH
CHECKED - CMV

WHKS & CO.
ENGINEERING

7018 KINGSMILL CT.
SPRINGFIELD, IL
(217) 483-9457
DESIGN FIRM #184001036

EXISTING PLANS
PAWNEE ROAD (FAS 1622)
OVER BRUSH CREEK

SHEET NO. 7	F.A.S. RTE.	SECTION	COUNTY	TOTAL SHEETS	SHEET NO.
	1622	07-00100-00-BR	SANGAMON	16	11
12 SHEETS	S.N. 084-3037		CONTRACT NO. 93506		
	FED. ROAD DIST. NO. - ILLINOIS FED. AID PROJECT				