

STATE OF ILLINOIS
DEPARTMENT OF TRANSPORTATION

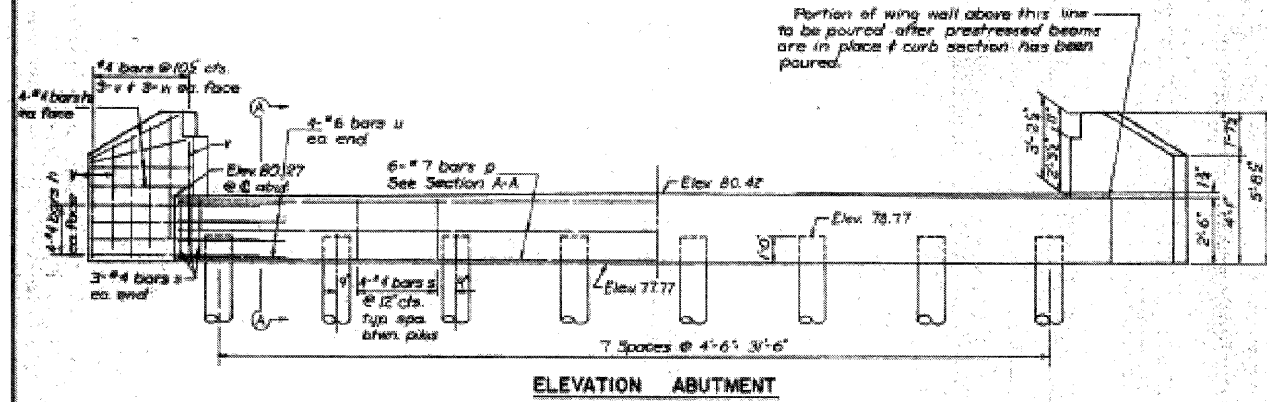
PROJECT NO.	1662	SECTION	07-00100-00-BR	SHEET NO.	16
DATE	10/28	CONTRACT	144-20	TOTAL SHEETS	16
DESIGNED BY	CMV	DRAWN BY	DLH	CONTRACT NO.	93506
CHECKED BY	SDS	DATE	11/12	FED. ROAD DIST. NO.	ILLINOIS
DRAWN BY	DLH	SCALE	AS SHOWN	FED. AID PROJECT	
CHECKED BY	CMV	PROJECT NO.	1662		

SHEET 4 OF 4

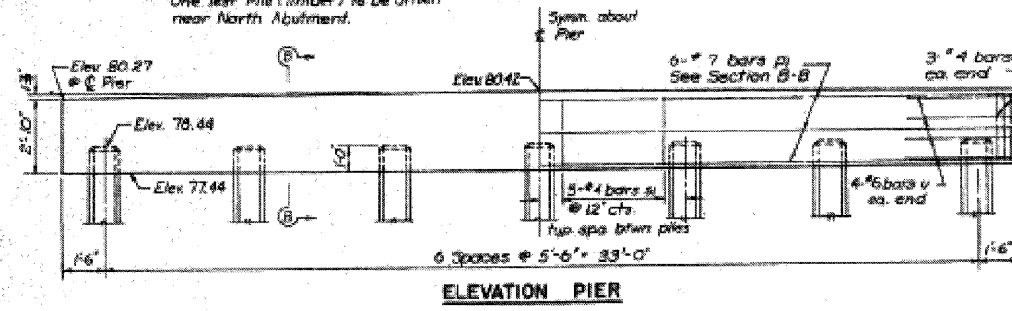
PILE DATA

Type	No. Abut. Created	Class Concrete	So. Abut. Created
No. Req'd	8	14"	8
Min Capacity	20T	35T	20T
Est. Length	29'	39'	36'

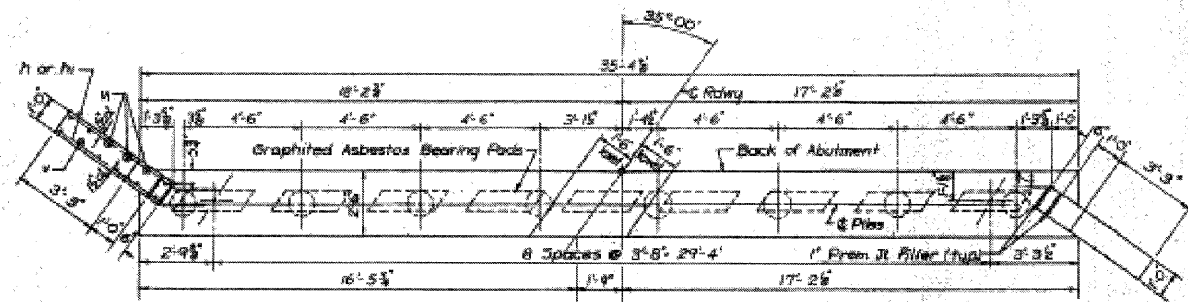
* Includes one Test Pile (Concrete) to be driven in Pier # 2
One Test Pile (Timber) to be driven near North Abutment.



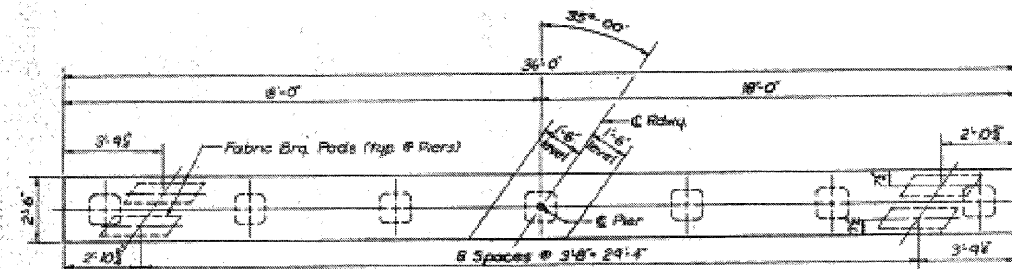
ELEVATION ABUTMENT



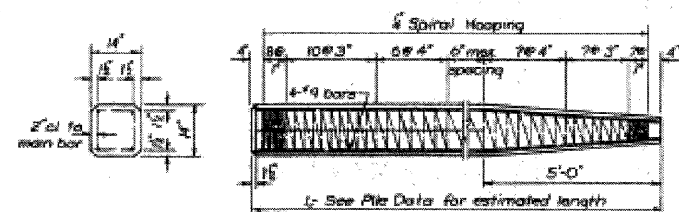
ELEVATION PIER



PLAN ABUTMENT

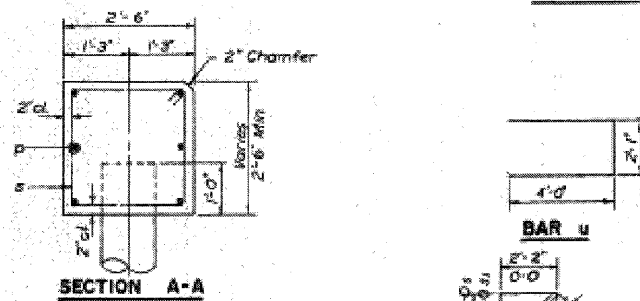


PLAN PIER

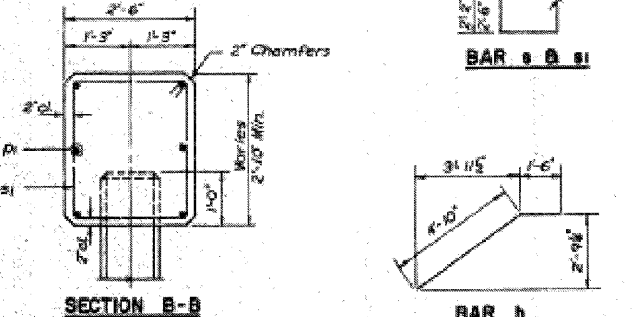


DETAIL OF PRECAST CONCRETE PILES

Note to Contractor:
For pile lengths up to 45' use two slings placed at a distance of 0.21 L from each end. On piles longer than 45' use three slings placed at .12 L from each end and at mid-point of pile.



SECTION A-A



SECTION B-B

BAR u

BAR s & s1

BAR h

BILL OF MATERIAL
2-PIERS 2-ABUTS

Bar	No.	Size	Length	Shape
h	32	#4	6'-4"	
h	32	#4	4'-4"	
p	12	#7	35'-0"	
p	12	#7	35'-8"	
s	64	#4	9'-8"	□
s	72	#4	10'-1"	□
u	32	#6	10'-1"	□
v	24	#4	3'-10"	
w	24	#4	4'-7"	

Class 3 Concrete Cu Rk 38.5
Reinforcement Bars (lbs) 3470
Created Piles (Lin Ft) 600
Test Piles (Timber) Ea. 1
Precast Concrete Piles (Lin Ft) 507
Test Piles (Concrete) Ea. 1

ABUTMENTS & PIERS

F.A.S. RT. 1642 (CH. RT. 28) SEC. 100 B

SANGAMON COUNTY

STATION 144+20

HANSON, COLLINS & RICE

CONSULTING ENGINEERS

DATE: 11/12
BY: LLM
SCALE: AS SHOWN
PROJECT NO.: 1662
SHEET NO.: 8-59-10

DESIGNED - CMV
CHECKED - SDS
DRAWN - DLH
CHECKED - CMV

WHKS & CO.
ENGINEERING
7018 KINGSMILL CT.,
SPRINGFIELD, IL
(217) 483-9457
DESIGN FIRM #184001036

EXISTING PLANS
PAWNEE ROAD (FAS 1622)
OVER BRUSH CREEK

SHEET NO. 12	F.A.S. RTE. 1622	SECTION 07-00100-00-BR	COUNTY SANGAMON	TOTAL SHEETS 16	SHEET NO. 16
12 SHEETS	S.N. 084-3037	CONTRACT NO. 93506		FED. ROAD DIST. NO. - ILLINOIS FED. AID PROJECT	