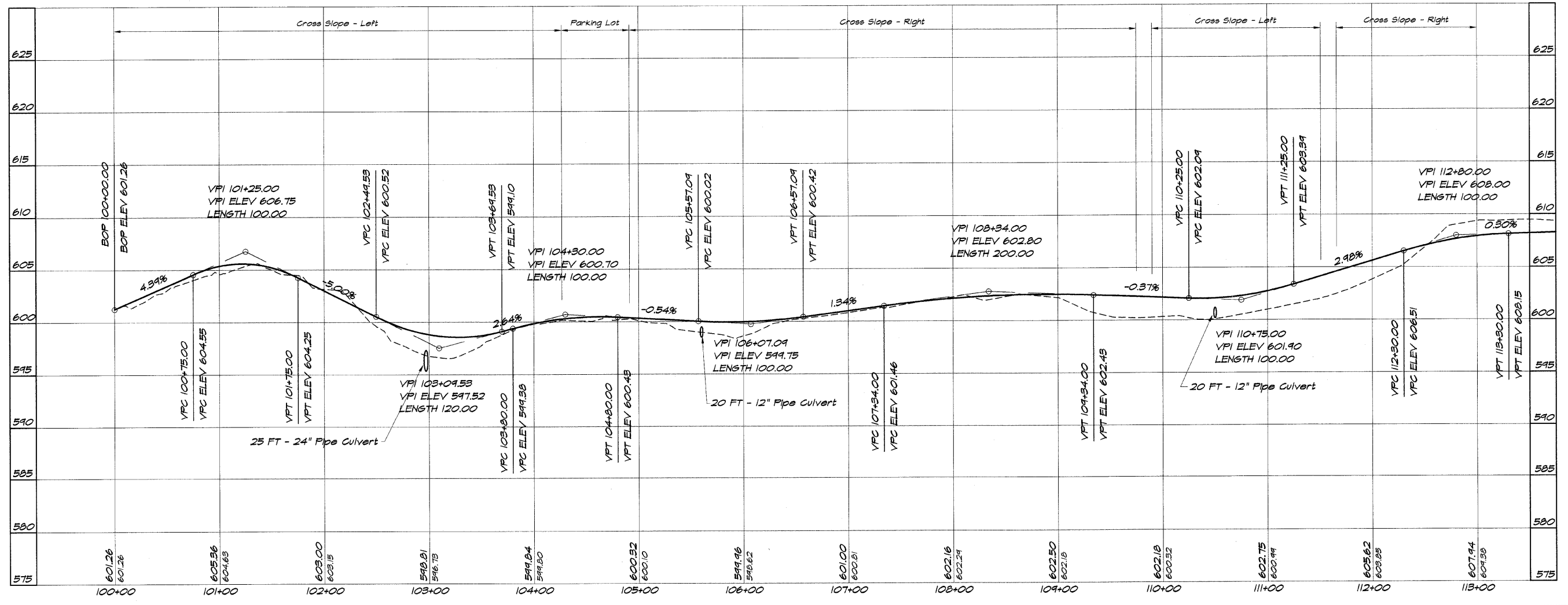
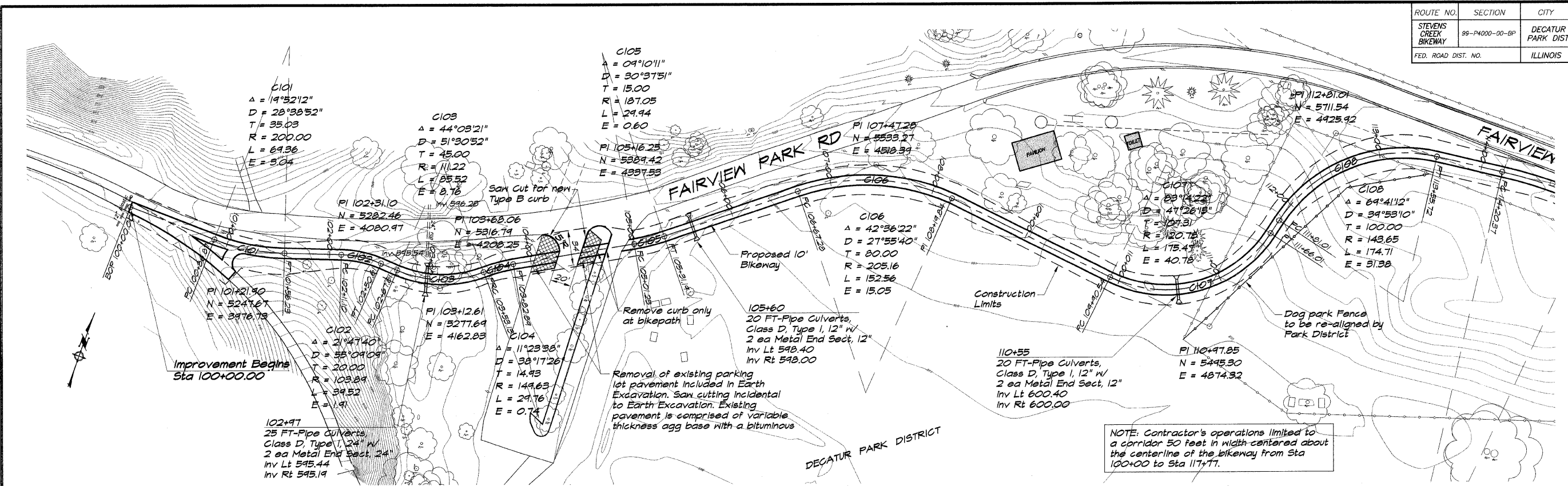


ROUTE NO.	SECTION	CITY	TOTAL SHEETS	SHEET NO.
STEVENS CREEK BIKEWAY	95-P4000-00-BP	DECATUR PARK DIST	145	6
FED. ROAD DIST. NO.	ILLINOIS	PROJECT	TE-0007(27)	



BATHURDE & ASSOCIATES, INC.
 Consulting Engineers
 1870 SOUTH TAYLORVILLE ROAD
 DECATUR, ILLINOIS
 60155-1000

DESIGNED	DRAWN	SCALE	DATE	JOB NO.	FIELD BOOK
DJM	P	1" = 50'	May 2002	95099	XXX

DECATUR PARK DISTRICT
STEVENS CREEK BIKEWAY - PHASE I
PLAN AND PROFILE
 STATION 100+00 TO 113+00