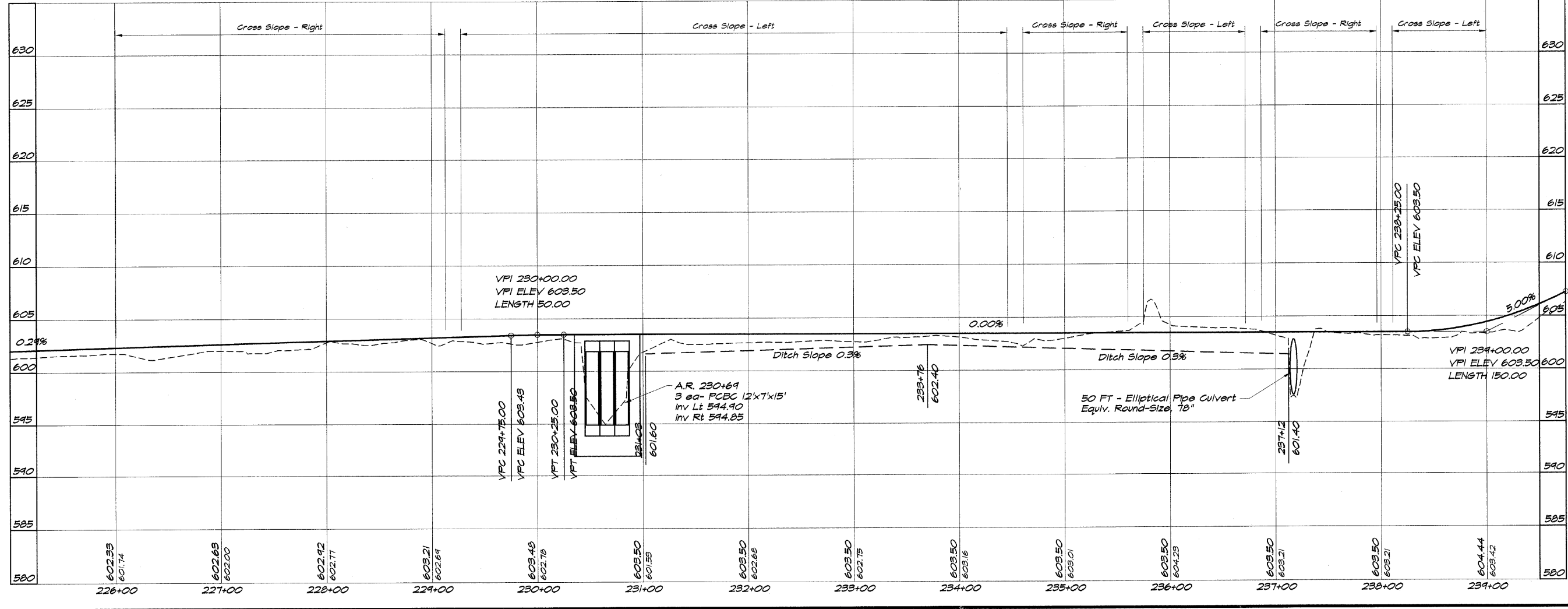
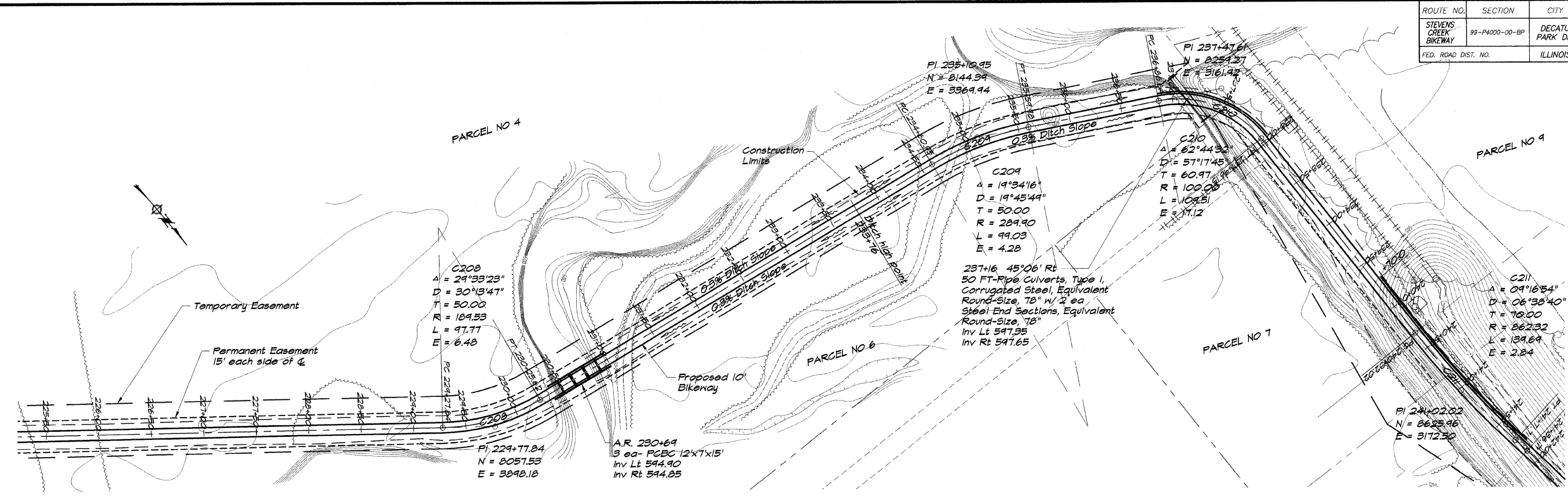


ROUTE NO.	SECTION	CITY	TOTAL SHEETS	SHEET NO.
STEVENS CREEK BIKEWAY	88-P4000-00-BP	DECATUR PARK DIST	145	11
FED. ROAD DIST. NO.	ILLINOIS		PROJECT TE-0007(27)	



BAINBRIDGE & ASSOCIATES, INC.
 Consulting Engineers
GEB MILANSKI
 1870 SOUTH TAYLORVILLE ROAD
 DECATUR, ILLINOIS 62521
 PHONE: 314-251-1400

DESIGNED	SCALE	DATE	JOB NO.
DLM	1" = 50'	May 2002	9909
DRAWN	FIELD BOOK	DATE	NO.
P mls	XXX	9909	

DECATUR PARK DISTRICT
STEVENS CREEK BIKEWAY - PHASE I
PLAN AND PROFILE
 STATION 226+00.00 TO 239+00.00