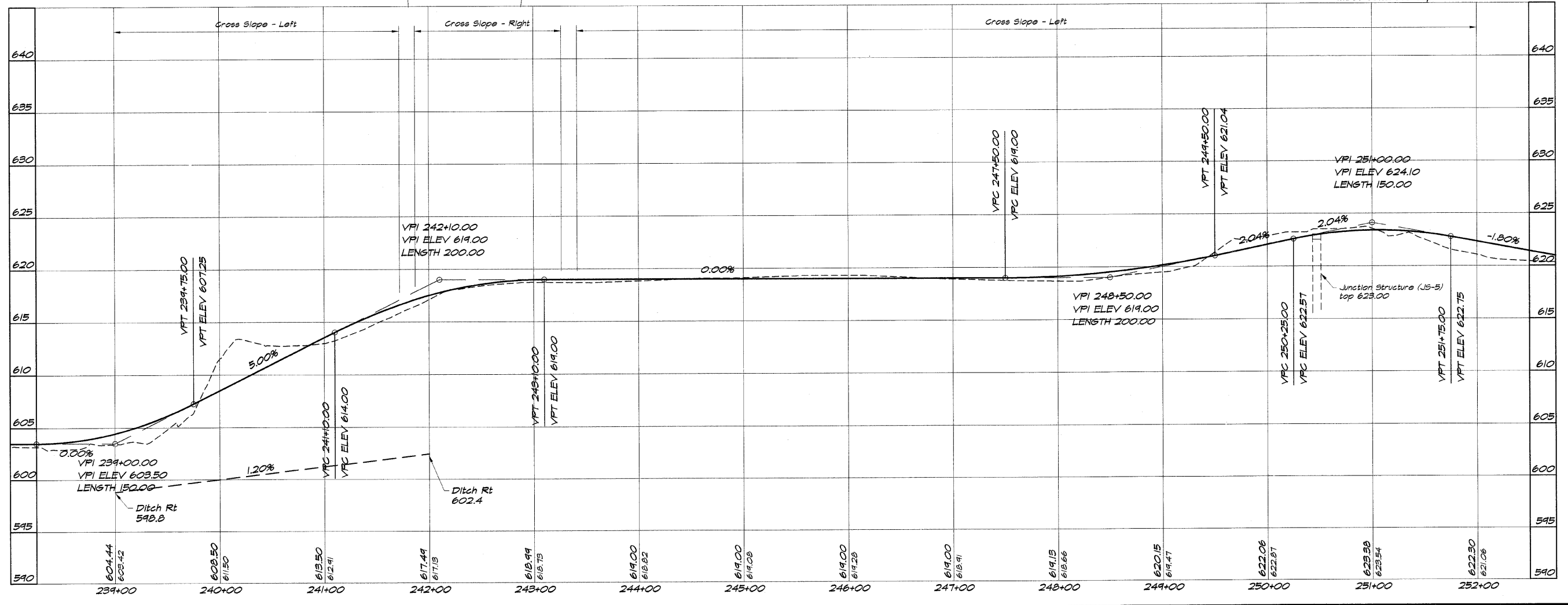
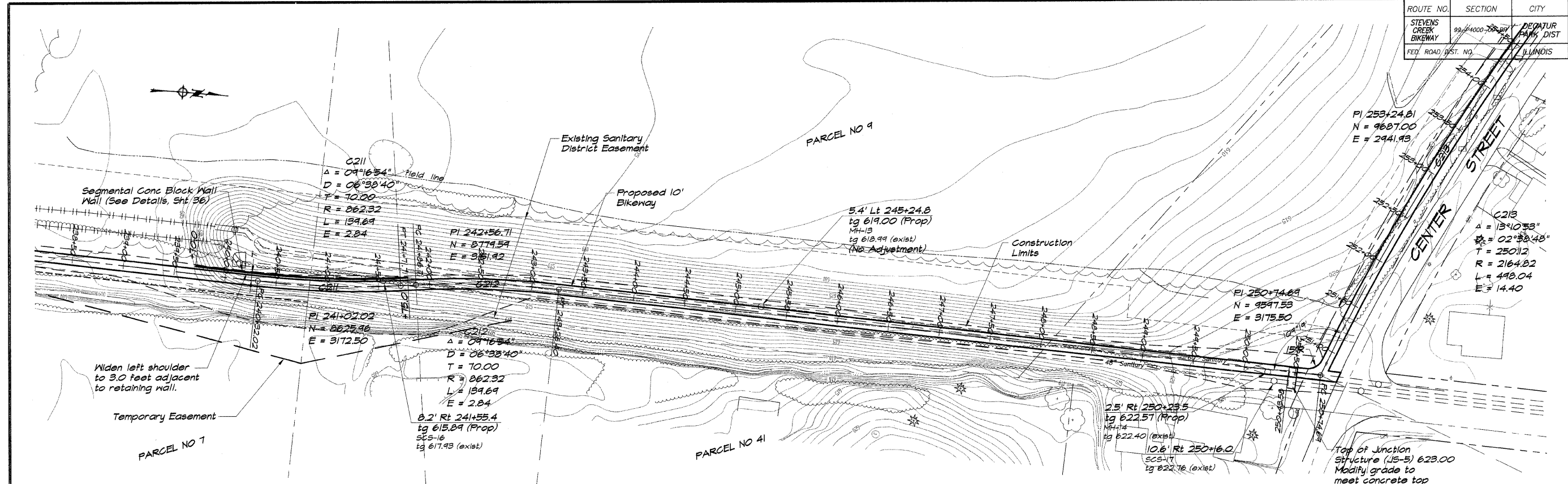


ROUTE NO.	SECTION	CITY	TOTAL SHEETS	SHEET NO.
STEVENS CREEK BIKEWAY	99.24000-75.821	DECATUR PARK DIST	145	12
FED. ROAD DIST. NO.	ILLINOIS	PROJECT	TE-0007(27)	



**BATBRIDGE & ASSOCIATES, INC.**  
**GEE MILAWSKI**  
 Consulting Engineers  
 1870 SOUTH TAYLORVILLE ROAD  
 DECATUR, ILLINOIS 62521  
 PHONE: 217.288.1100 FAX: 217.288.1101

DESIGNED	SCALE	DATE	JOB NO.
DJM	1" = 50'	May 2002	95099
DRAWN	FIELD BOOK	DATE	XXX
P millis			

**DECATUR PARK DISTRICT**  
**STEVENS CREEK BIKEWAY - PHASE I**  
**PLAN AND PROFILE**  
 STATION 239+00.00 TO 252+00.00