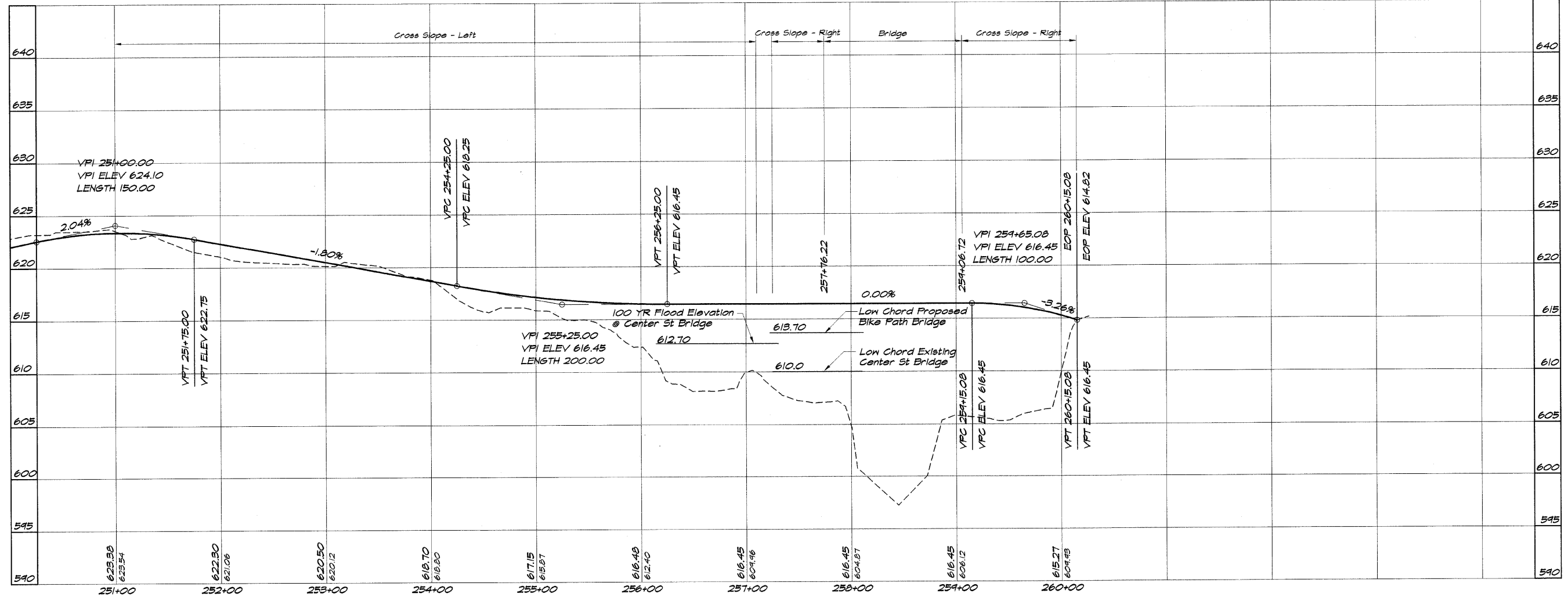
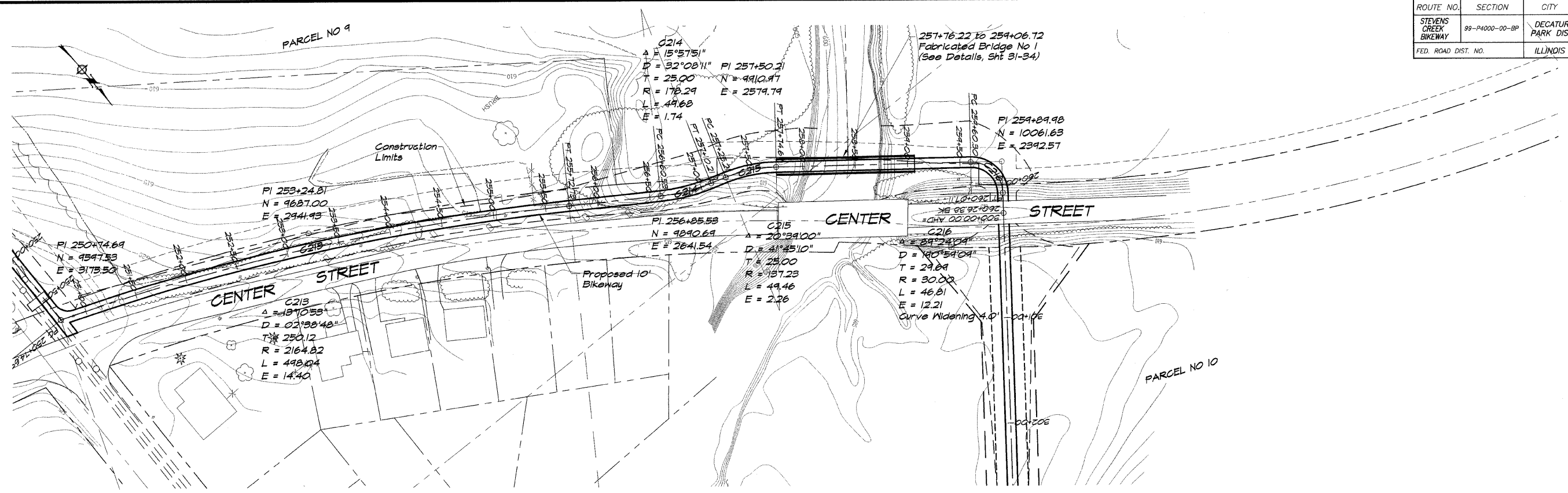


ROUTE NO.	SECTION	CITY	TOTAL SHEETS	SHEET NO.
STEVENS CREEK BIKEWAY	99-P4000-00-BP	DECATUR PARK DIST	145	13
FED. ROAD DIST. NO.		ILLINOIS	PROJECT TE-0007(27)	



BATHURIDGE & ASSOCIATES, INC.
 Consulting Engineers
 1875 SOUTH TAYLORVILLE ROAD
 DECATUR, ILLINOIS
 PHONE: 314-248-1400

DESIGNED	SCALE	REVISIONS
MHP	1" = 50'	NO. BY DATE
PM	DATE	
FIELD BOOK	May 2002	
XXX	JOB NO. 99099	

DECATUR PARK DISTRICT
STEVENS CREEK BIKEWAY - PHASE I
PLAN AND PROFILE
 STATION 251+00.00 TO 260+15.08