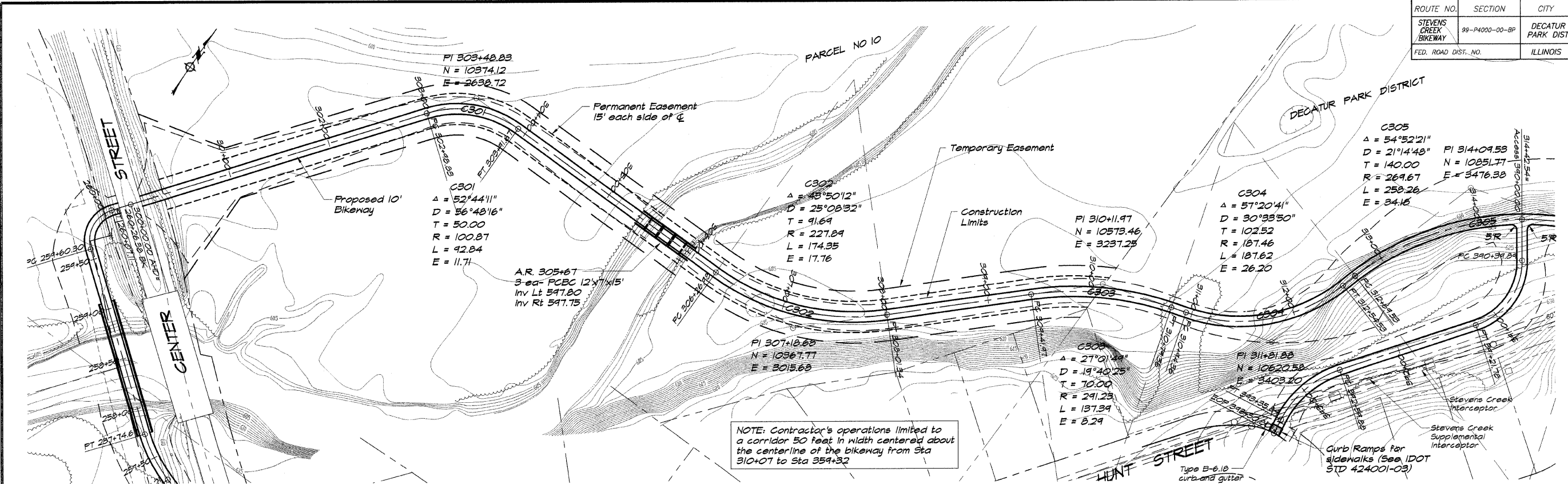
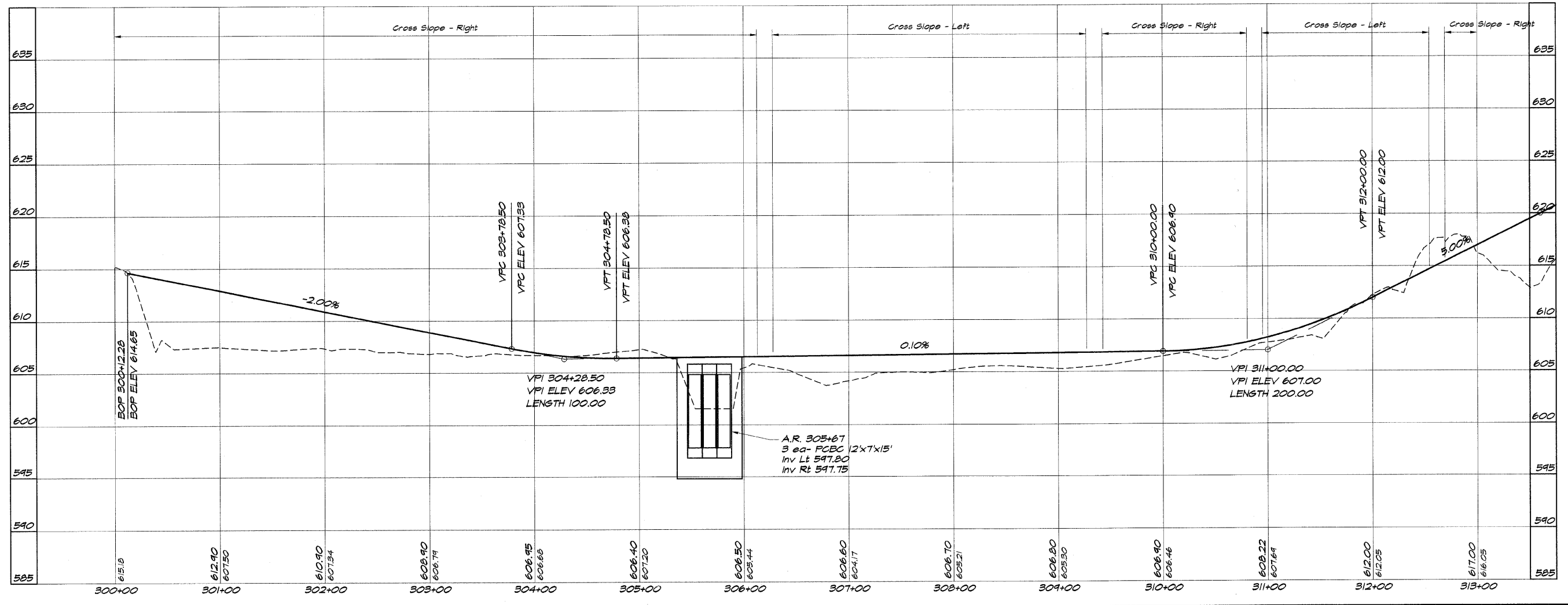


ROUTE NO.	SECTION	CITY	TOTAL SHEETS	SHEET NO.
STEVENS CREEK BIKEWAY	95-P4000-00-BP	DECATUR PARK DIST	145	14
FED. ROAD DIST. NO.		ILLINOIS	PROJECT TE-0007(27)	



NOTE: Contractor's operations limited to a corridor 50 feet in width centered about the centerline of the bikeway from Sta 310+07 to Sta 359+32



BATNRIDGE & ASSOCIATES, INC.
Consulting Engineers
GEE MILANSKI
1670 SOUTH TAYLORVILLE ROAD
DECATUR, ILLINOIS
3140 LEXINGTON TRAIL

REVISIONS	NO.	BY	DATE
SCALE	1" = 50'		
DESIGNED	DJL		
DRAWN	P		
FIELD BOOK	96099		
DATE	May 2002		
JOB NO.	96099		
FIELD BOOK	XXX		

DECATUR PARK DISTRICT
STEVENS CREEK BIKEWAY - PHASE I
PLAN AND PROFILE
STATION 300+00.00 TO 313+00.00