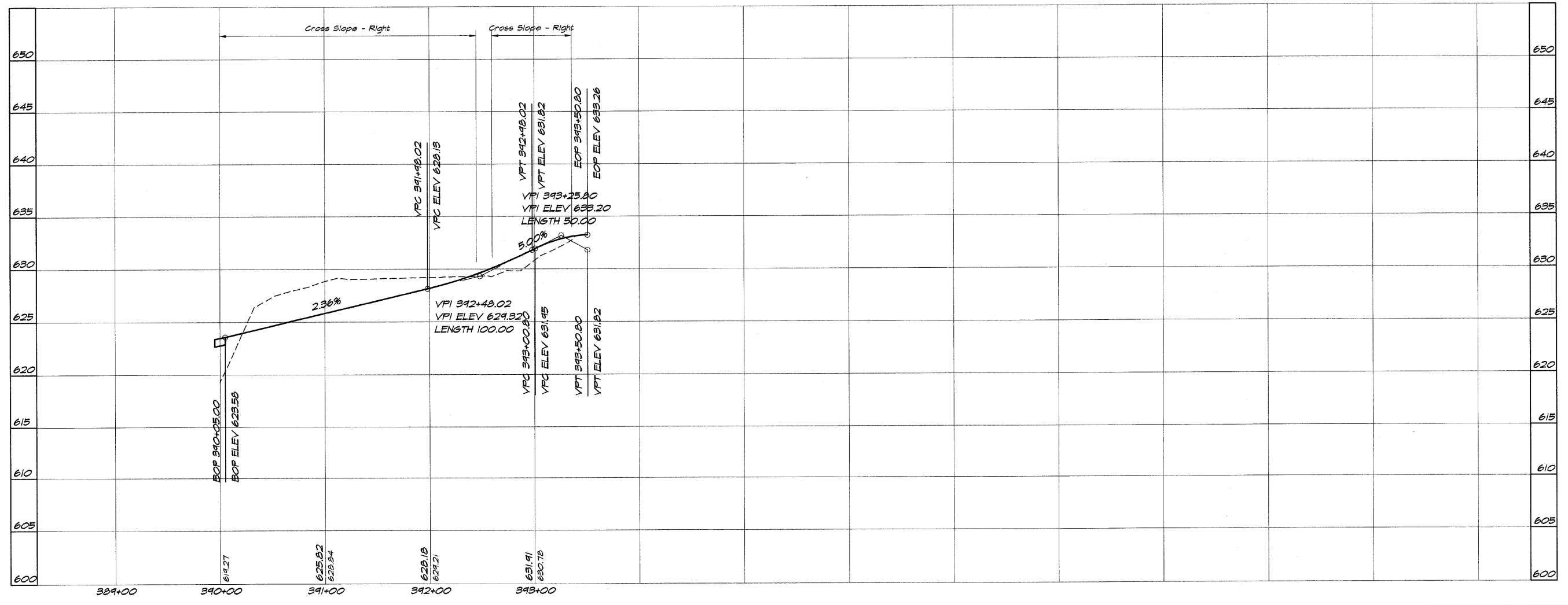
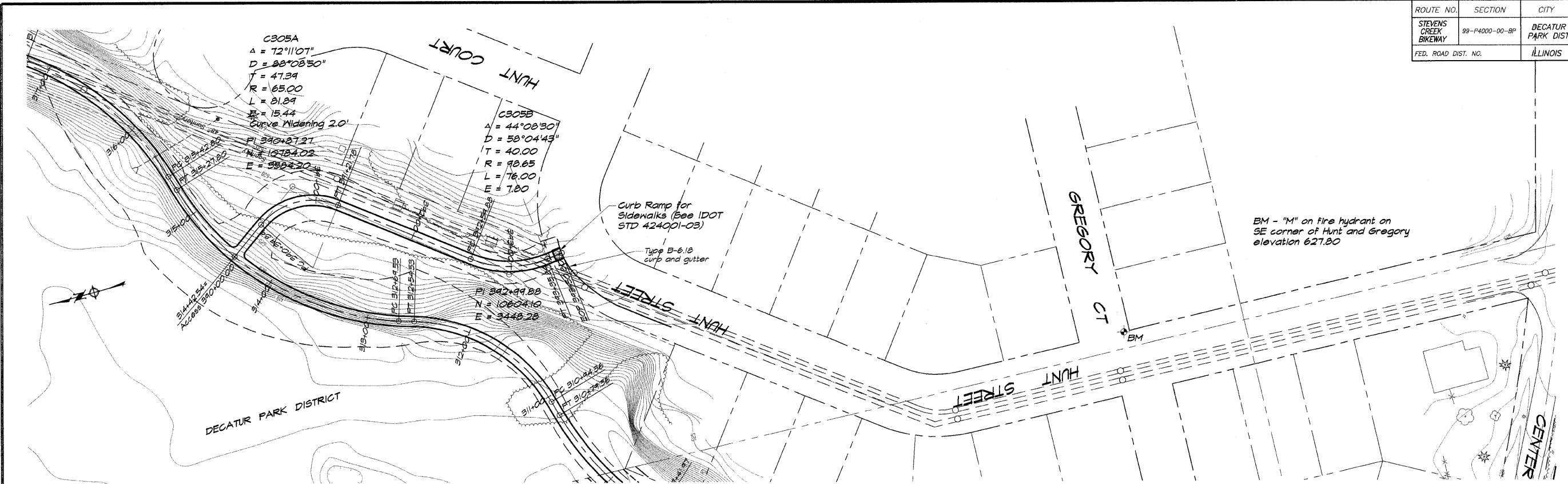


ROUTE NO.	SECTION	CITY	TOTAL SHEETS	SHEET NO.
STEVENS CREEK BIKEWAY	99-P4000-00-BP	DECATUR PARK DIST	145	15
FED. ROAD DIST. NO.	ILLINOIS		PROJECT TE-0007(27)	



BATHBRIDGE & ASSOCIATES, INC.
 Consulting Engineers
GEB MLANSKI
 1870 SOUTH TAYLORVILLE ROAD
 DECATUR, ILLINOIS 62526
 Phone: 314-399-1800

DESIGNED	SCALE	REVISIONS
DJL/K	1" = 50'	NO.
P. Mills	DATE	BY
FIELD BOOK	May 2002	DATE
XXX	JOB NO.	
	99099	

DECATUR PARK DISTRICT
 STEVENS CREEK BIKEWAY - PHASE I
PLAN AND PROFILE
 STATION 390+00.00 TO 393+50.80