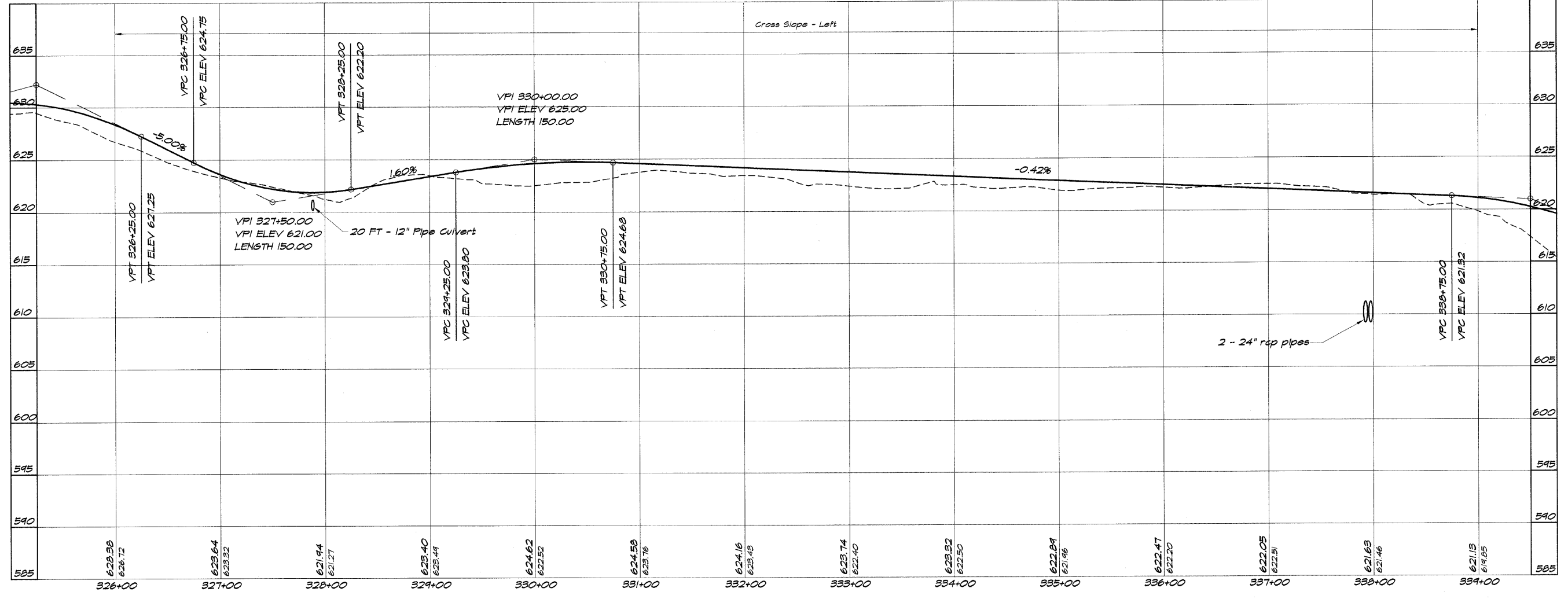
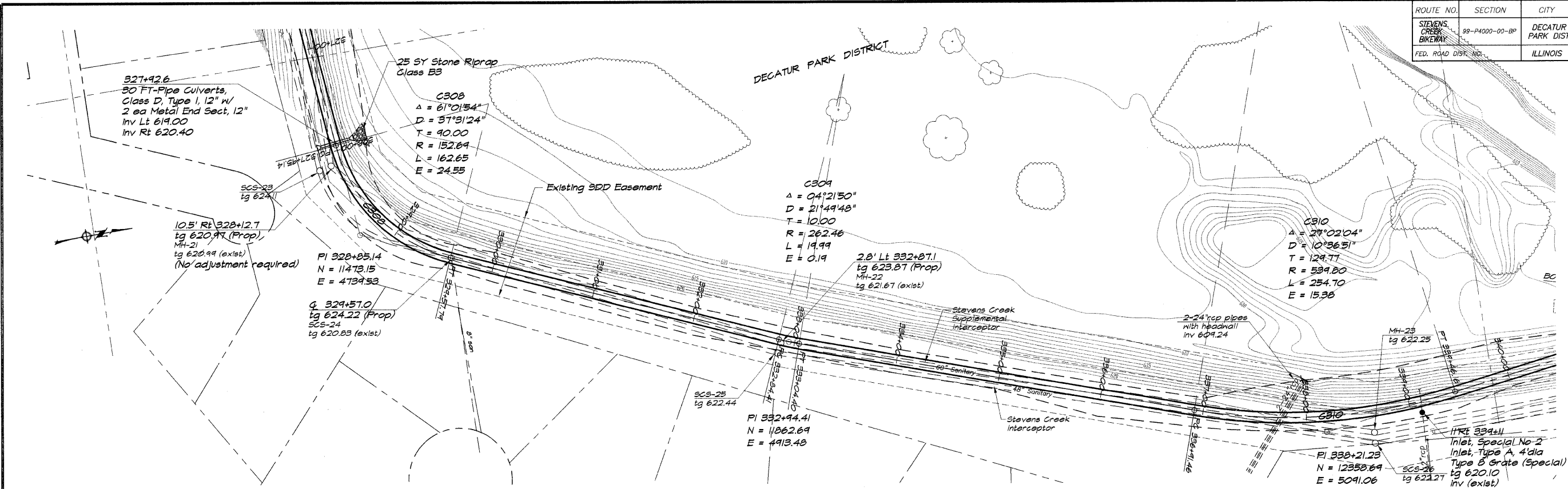


ROUTE NO.	SECTION	CITY	TOTAL SHEETS	SHEET NO.
STEVENS CREEK BIKEWAY	89-P4000-00-BP	DECATUR PARK DIST	145	17
FED. ROAD DIST. NO.		ILLINOIS	PROJECT TE-0007(27)	



BAINBRIDGE & ASSOCIATES, INC.
 Consulting Engineers
GEB
MILLANSKI
 1670 SOUTH TAYLORVILLE ROAD
 DECATUR, ILLINOIS 60155
 Phone: (312) 291-0200

DESIGNED	SCALE	REVISIONS
DLW	1" = 50'	NO.
PM	DATE	BY
XXX	May 2002	DATE
	Job No. 99094	NO.
	Field Book	DATE
	XXX	NO.

DECATUR PARK DISTRICT
STEVENS CREEK BIKEWAY - PHASE I
PLAN AND PROFILE
 STATION 326+00.00 TO 339+00.00