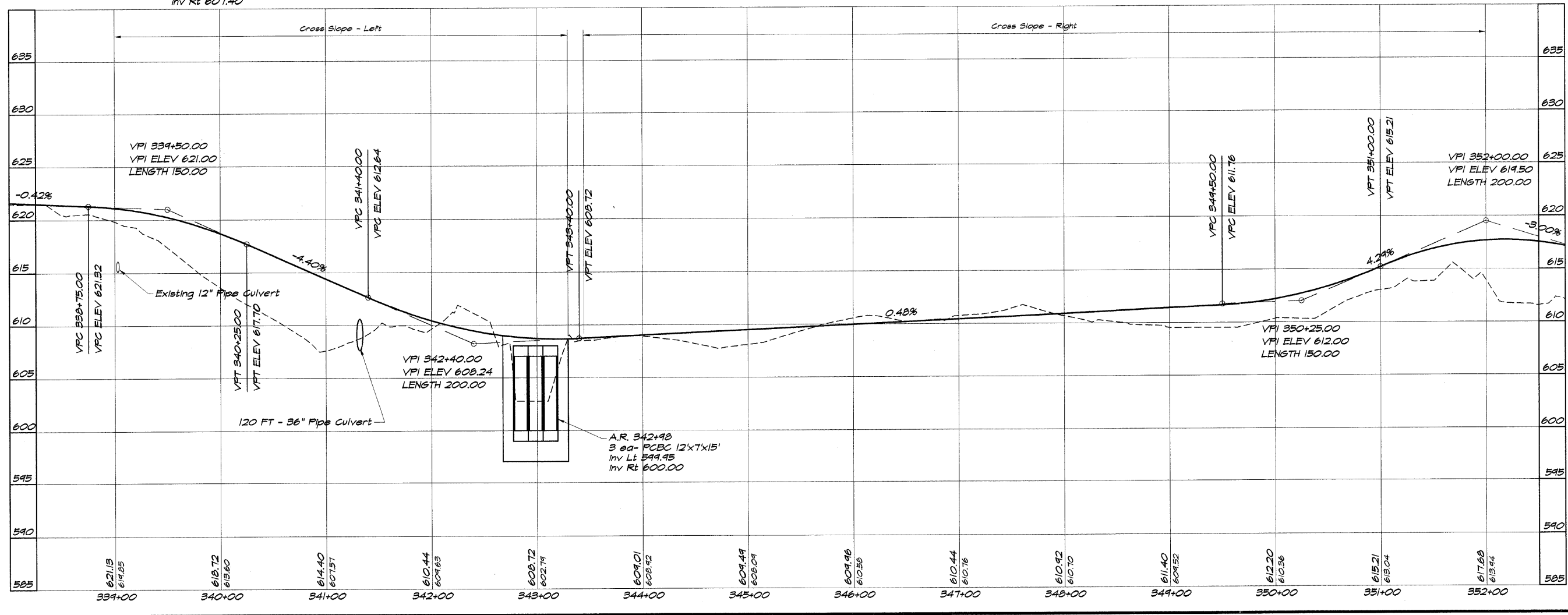
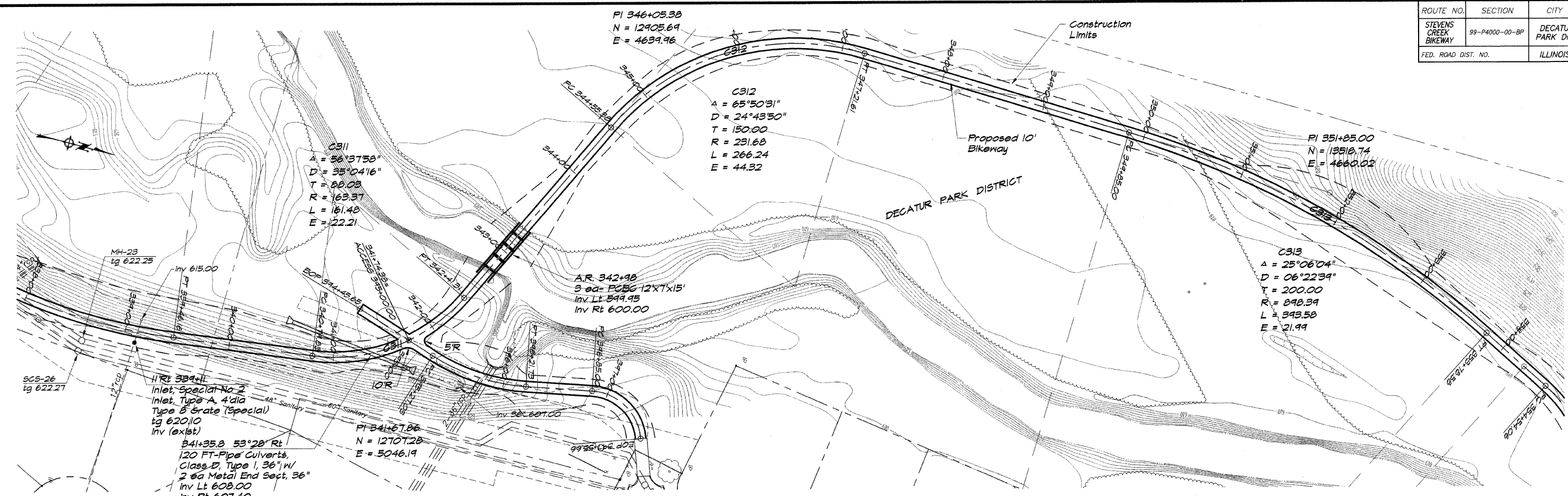


ROUTE NO.	SECTION	CITY	TOTAL SHEETS	SHEET NO.
STEVENS CREEK BIKEWAY	99-P4000-00-BP	DECATUR PARK DIST	145	18
FED. ROAD DIST. NO.	ILLINOIS		PROJECT TE-0007(27)	



BAINBRIDGE & ASSOCIATES, INC.
 Consulting Engineers
 1470 SOUTH TAYLORVILLE ROAD
 DECATUR, ILLINOIS 62526
 ILL. LICENSE 194-001298

DESIGNED	SCALE	NO.	BY	DATE
DJM	1" = 50'			
PM				
FIELD BOOK				
XXX				

DECATUR PARK DISTRICT
 STEVENS CREEK BIKEWAY - PHASE I
 PLAN AND PROFILE
 STATION 339+00.00 TO 352+00.00