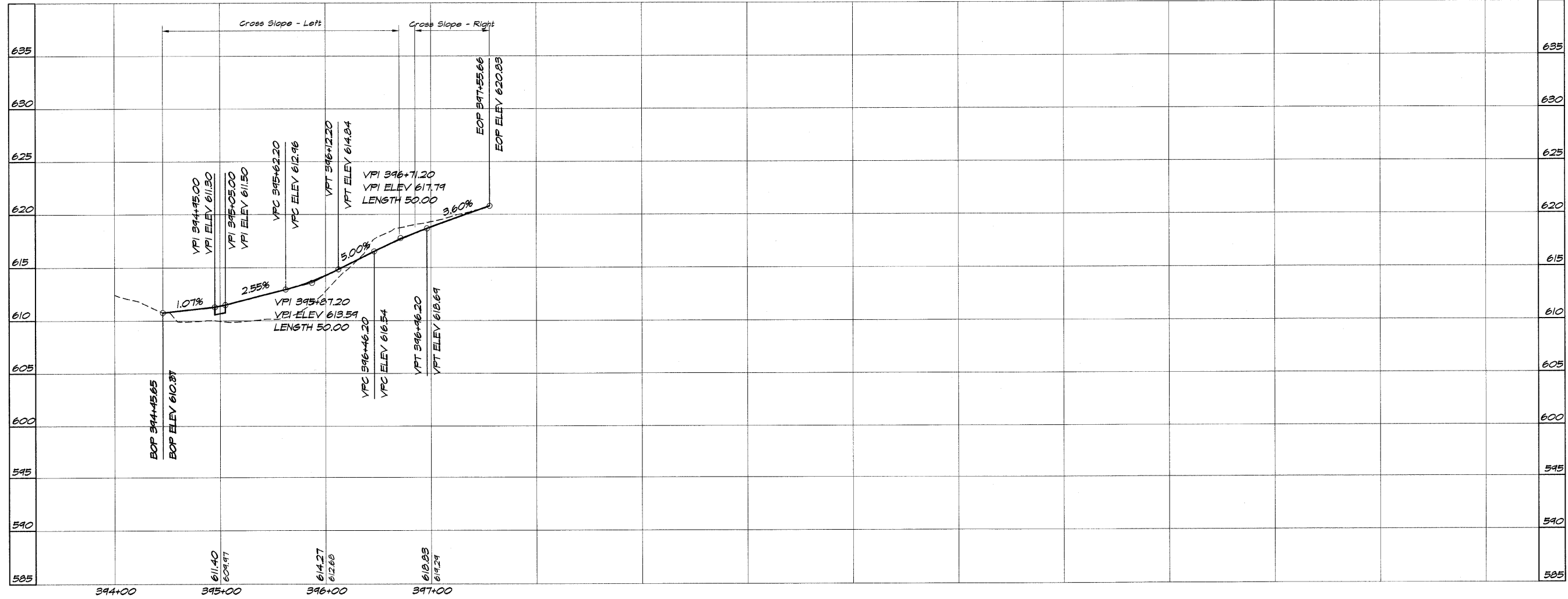
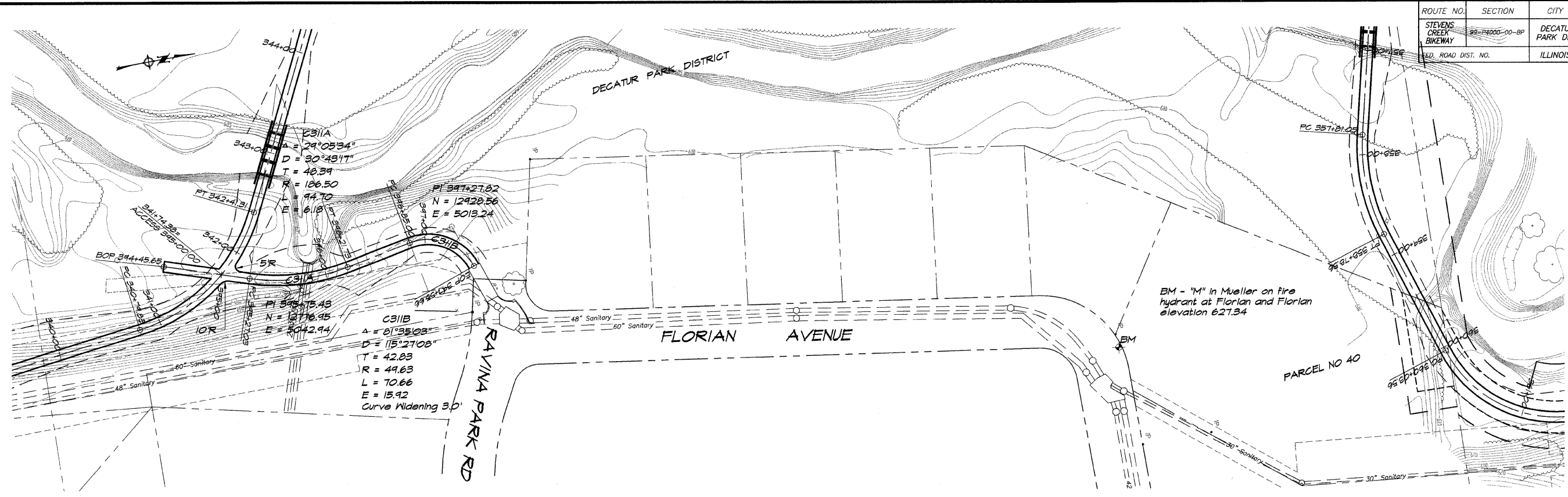


ROUTE NO.	SECTION	CITY	TOTAL SHEETS	SHEET NO.
STEVENS CREEK BIKEWAY	82-P4000-00-BP	DECATUR PARK DIST	145	19
ED. ROAD DIST. NO.	ILLINOIS		PROJECT TE-0007(27)	



BAINBRIDGE & ASSOCIATES, INC.
 Consulting Engineers
GPE
MILANSKI
 1875 SOUTH TAYLORVILLE ROAD
 DECATUR, ILLINOIS 62521
 PHONE: 248-1200

DESIGNED	SCALE	NO.	BY	DATE
DLW	1" = 50'			
DRAWN	DATE			
P	May 2002			
FIELD BOOK	JOB NO.			
XXX	99099			

DECATUR PARK DISTRICT
STEVENS CREEK BIKEWAY - PHASE I
PLAN AND PROFILE
 STATION 394+45.65 TO 397+55.66