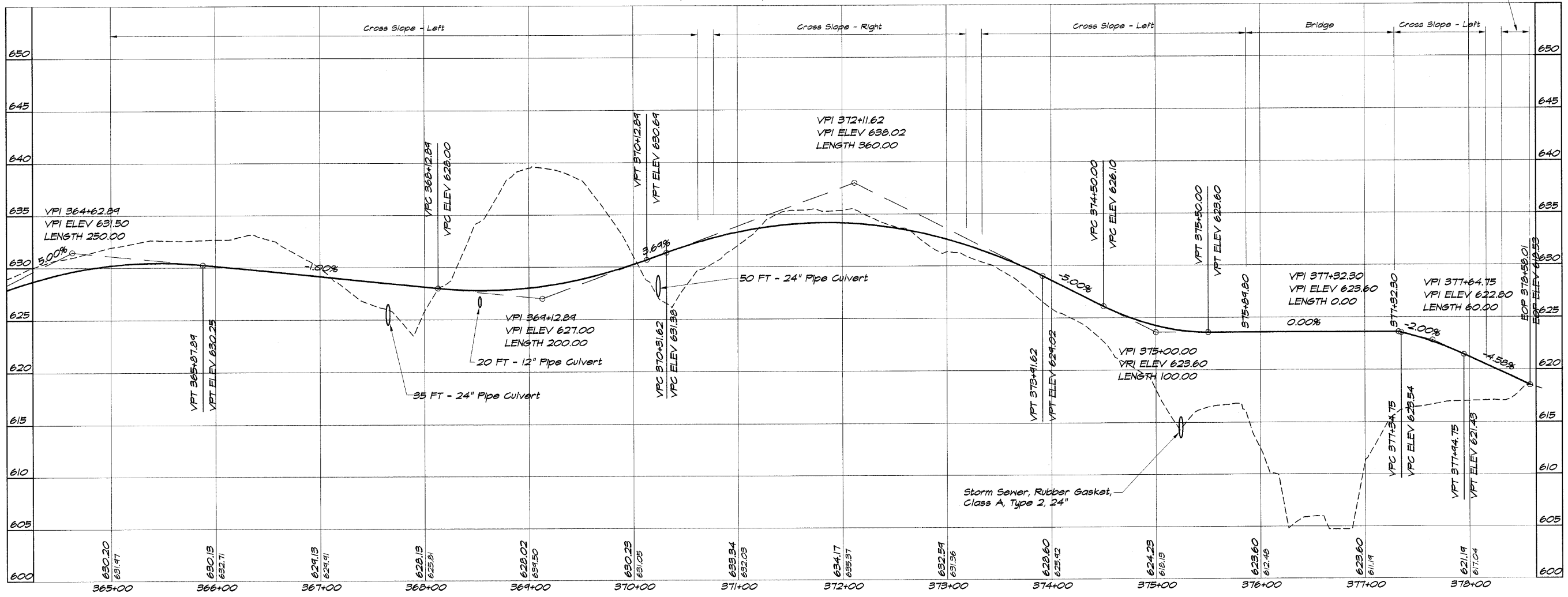
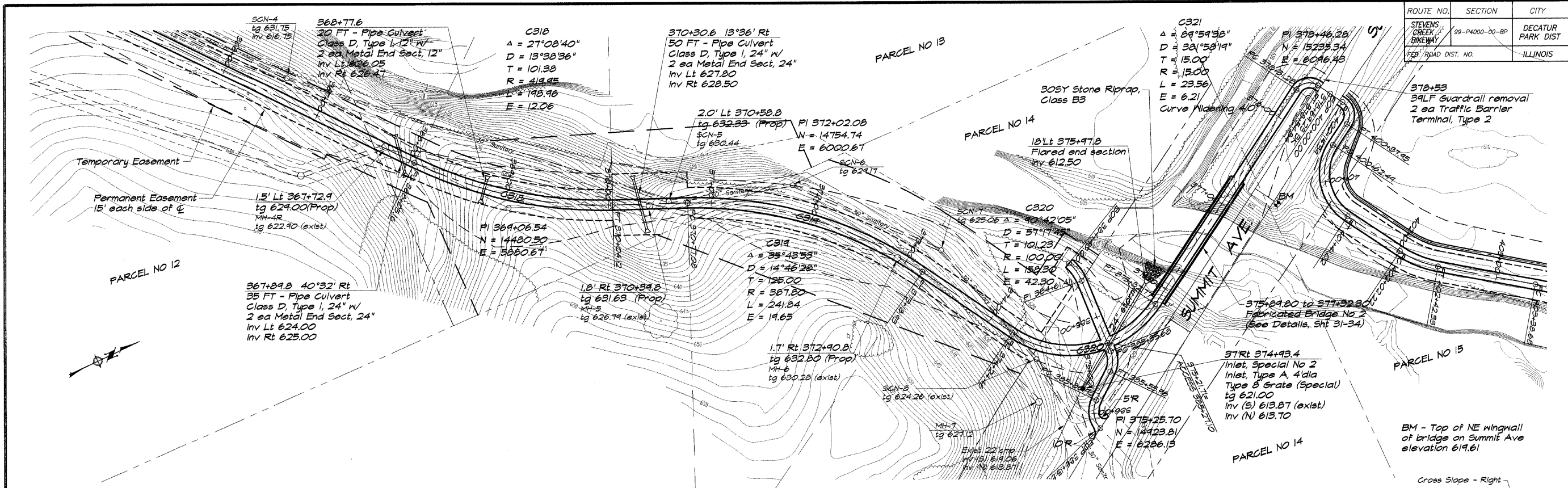


ROUTE NO.	SECTION	CITY	TOTAL SHEETS	SHEET NO.
STEVENS CREEK BIKEWAY	95-P4000-00-BP	DECATUR PARK DIST	145	21
FEB. ROAD DIST. NO. ILLINOIS			PROJECT TE-0007(27)	



BATNBRIDGE & ASSOCIATES, INC.
 Consulting Engineers
 1870 SOUTH TAYLORVILLE ROAD
 DECATUR, ILLINOIS 62526
 Phone: (618) 426-1400

REVISIONS		SCALE	DATE	JOB NO.
NO.	BY	1" = 50'	May 2002	96099

DECATUR PARK DISTRICT
STEVENS CREEK BIKEWAY - PHASE I
PLAN AND PROFILE
 STATION 365+00.00 TO 378+58.01