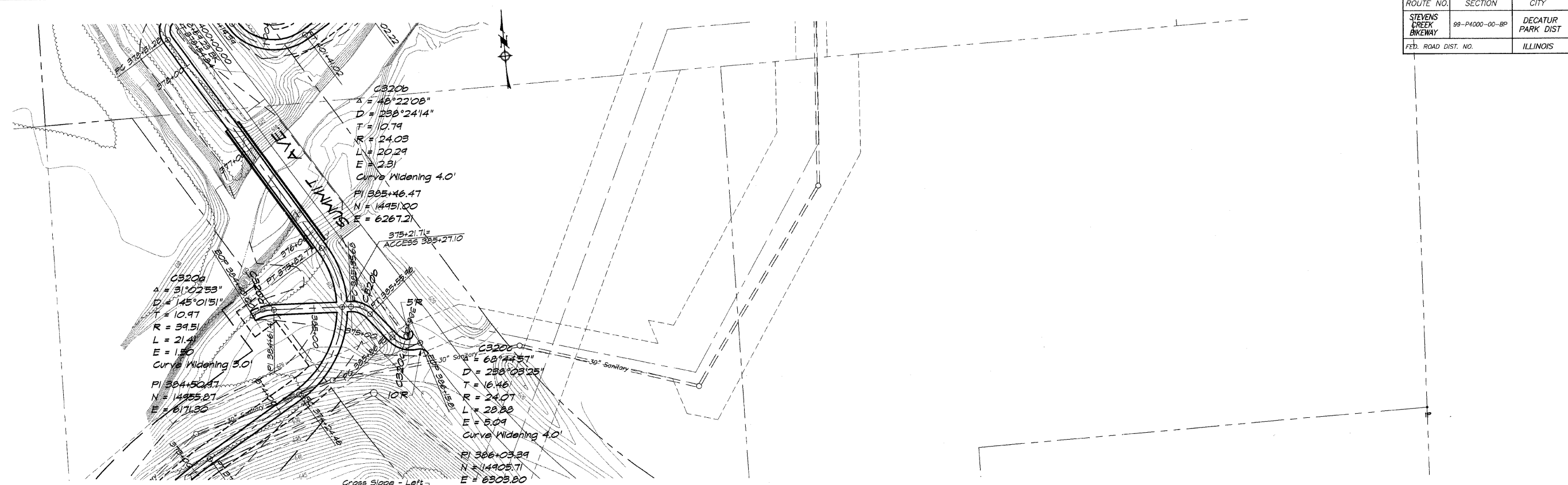


ROUTE NO.	SECTION	CITY	TOTAL SHEETS	SHEET NO.
STEVENS CREEK BIKEWAY	99-P4000-00-BP	DECATUR PARK DIST	145	22
FED. ROAD DIST. NO.		ILLINOIS	PROJECT TE-0007(27)	



**BAINBRIDGE & ASSOCIATES, INC.**  
 Consulting Engineers  
 1870 SOUTH TAYLORVILLE ROAD  
 DECATUR, ILLINOIS 62526  
 Phone: 312-406-1800

DESIGNED	SCALE	REVISIONS
MHP	1" = 50'	NO. BY DATE
DRWN	DATE	
P. mls	May 2002	
FIELD BOOK	JOB NO.	
XXX	46099	

**DECATUR PARK DISTRICT**  
 STEVENS CREEK BIKEWAY - PHASE I  
 PLAN AND PROFILE  
 STATION 384+40.30 TO 386+15.81