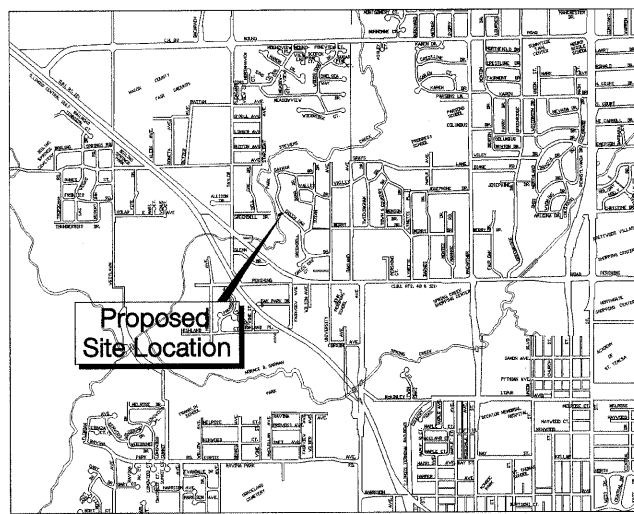


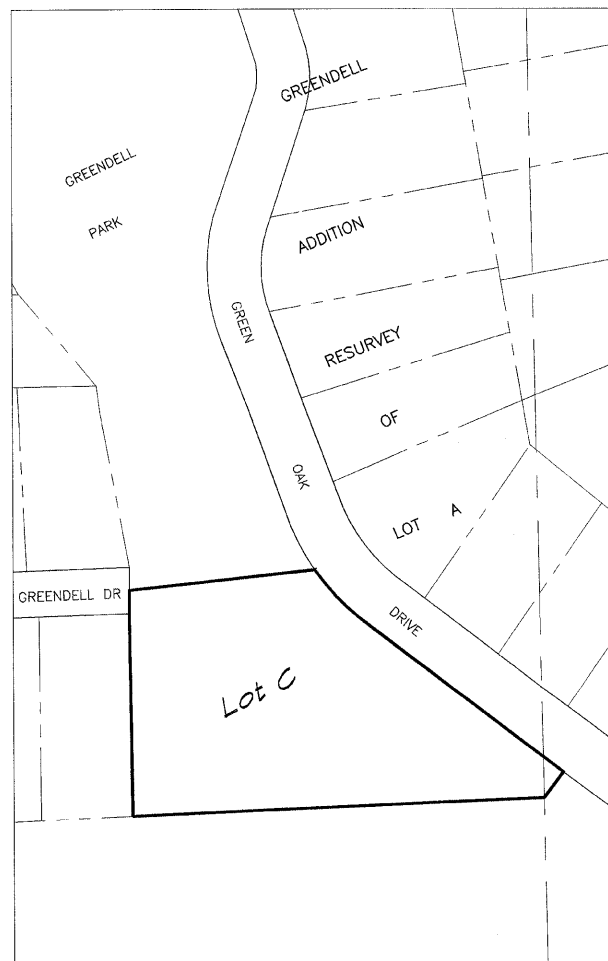
ROUTE NO.	SECTION	CITY	TOTAL SHEETS	SHEET NO.
STEVENS CREEK BIKEWAY	88-P4000-00-BP	DECATUR PARK DIST	145	29
FED. ROAD DIST. NO.		ILLINOIS	PROJECT TE-0007(27)	



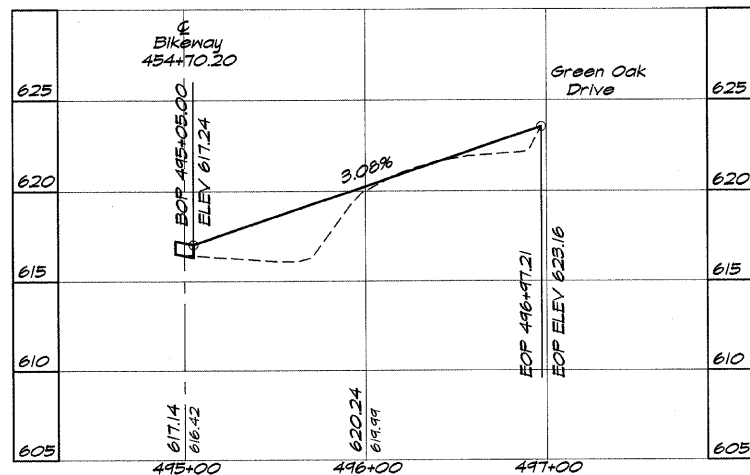
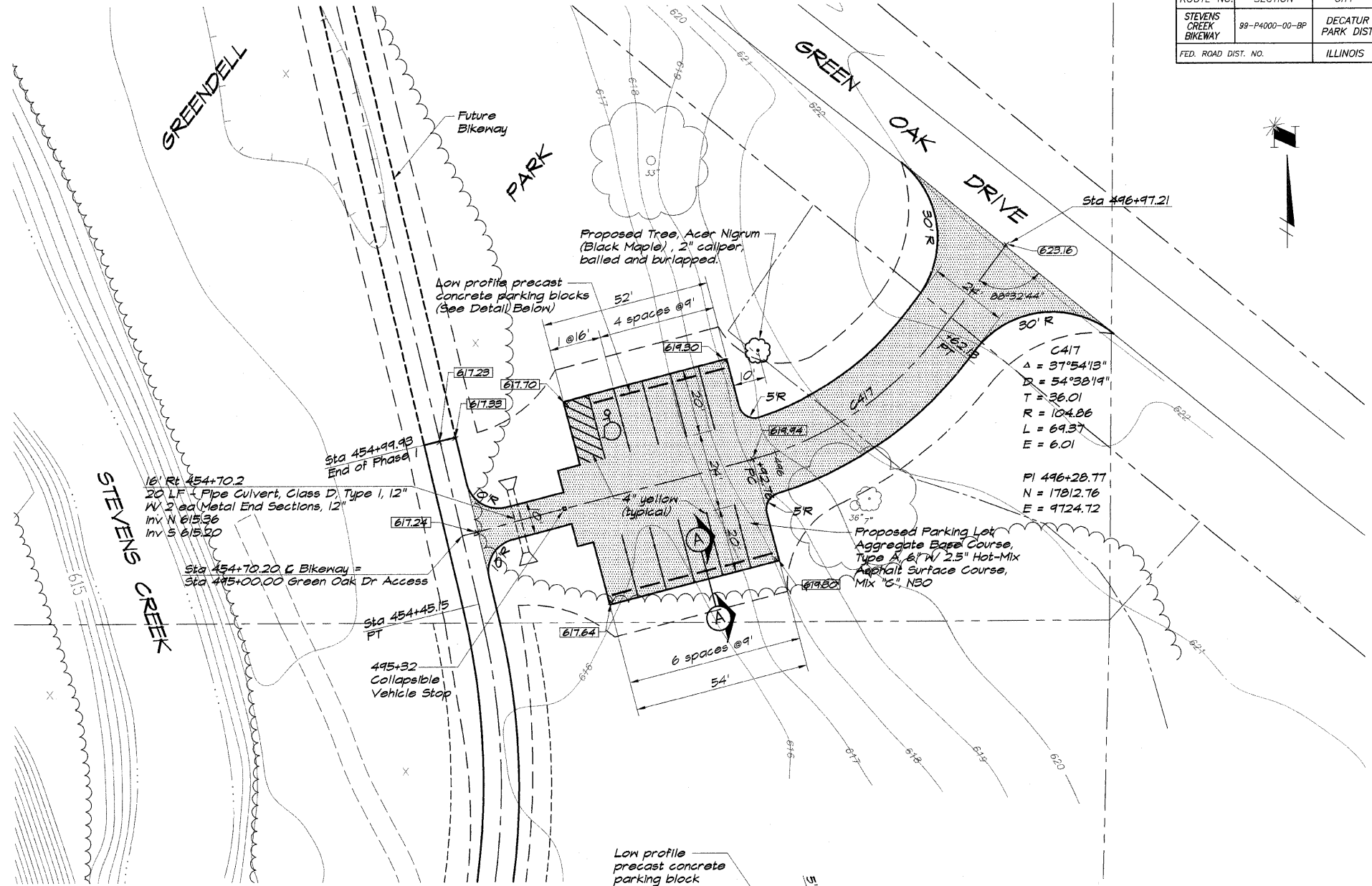
LOCATION MAP  
1" = 2000'

LEGAL DESCRIPTION

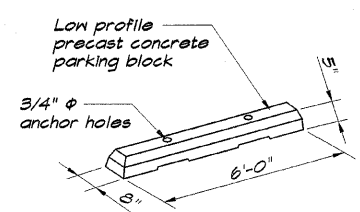
Lot C of Greendell Addition Resurvey of Lot A as per plat recorded in Book 300 on page 266 of the records in the Recorder's Office of Macon County, Illinois.



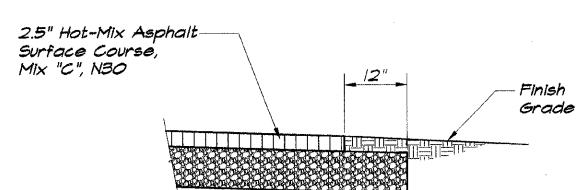
PROPERTY SITE  
1" = 100'



PROFILE  
HORZ 1" = 50'  
VERT 1" = 5'



PARKING BLOCK



SECTION (A)

NOTES

- Construction and materials shall conform to IDOT "Standard Specifications for Road and Bridge Construction", January 2007.
- Accessible Parking Signs shall conform with the U.S. Department of Transportation standard RT-8 accompanied with "200 Fine" Sign.
- Parking lot shall be 2.5" Hot-Mix Asphalt Surface Course, Mix "C", NSO with Aggregate Base Course, Type A, 6".
- Grade site to drain as shown.
- The erosion control specified in the Storm Water Pollution Prevention Plan (SWPPP) shall be in accordance with applicable IDOT Standards.
- The proposed parking lot has 11 spaces. The Zoning Ordinance requires 1.5 points per space.  $11 \times 1.5 = 16.5$ . Therefore 17 landscaping points are required. The parking lot has less than 20 spaces, so the landscaping can be located within 10' of the perimeter of the parking lot. One Black Maple trees with point value of 18 is proposed to be planted next to the parking lot as shown.  $1 \times 18 = 18$ .
- Landscaping shall meet the requirements of Section XXVIII of the City of Decatur's Zoning Ordinance.

BATNBRIDGE & ASSOCIATES, INC.  
Civil Engineering  
1670 SOUTH TAYLORVILLE ROAD  
DECATUR, ILLINOIS 62526  
Phone: 248-1800 Fax: 248-1802

DESIGNED	SCALE	NO.	BY	DATE
MMP	1" = 20'			
DRAWN	DATE	NO.	BY	DATE
P Mills	Dec 2003			
FIELD BOOK	JOB NO.	NO.	BY	DATE
XXX	95099			

DECATUR PARK DISTRICT  
STEVENS CREEK BIKEWAY - PHASE I  
GREENDELL PARK PARKING LOT  
000 GREEN OAK DRIVE