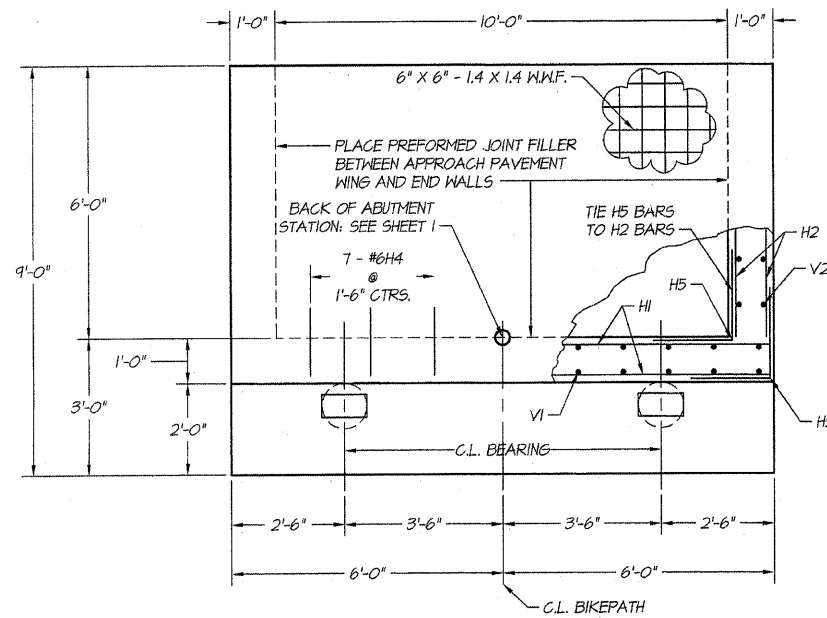
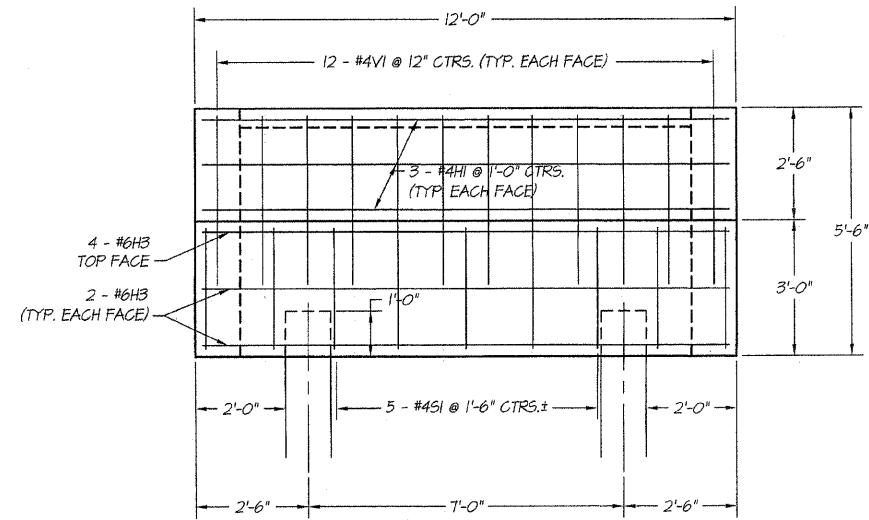


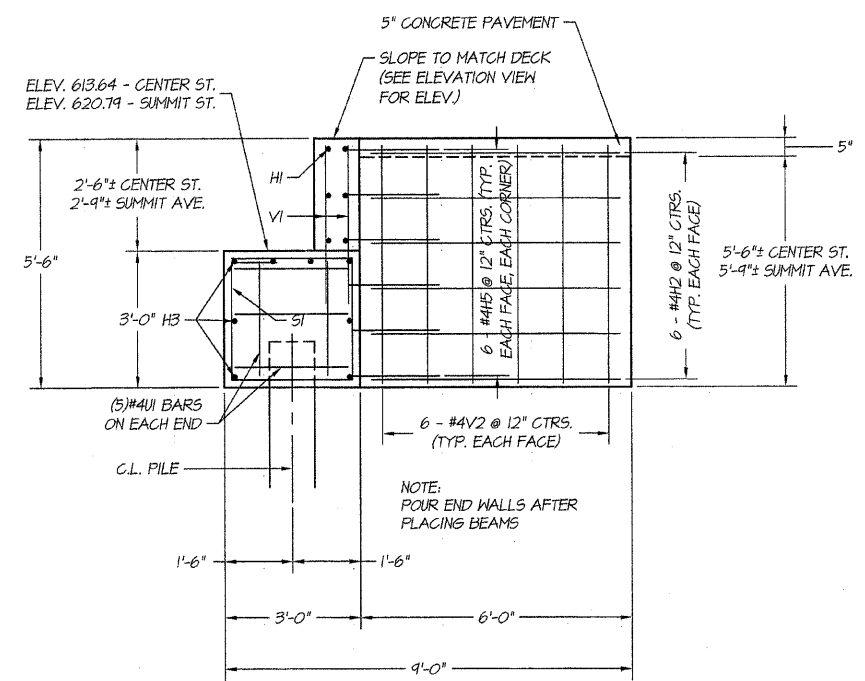
ROUTE NO.	SECTION	CITY	TOTAL SHEETS	SHEET NO.
STEVENS CREEK BIKEWAY	88-P4000-00-BP	DECATUR PARK DIST	145	33
FED. ROAD DIST. NO.	ILLINOIS	PROJECT	TE-0007(27)	



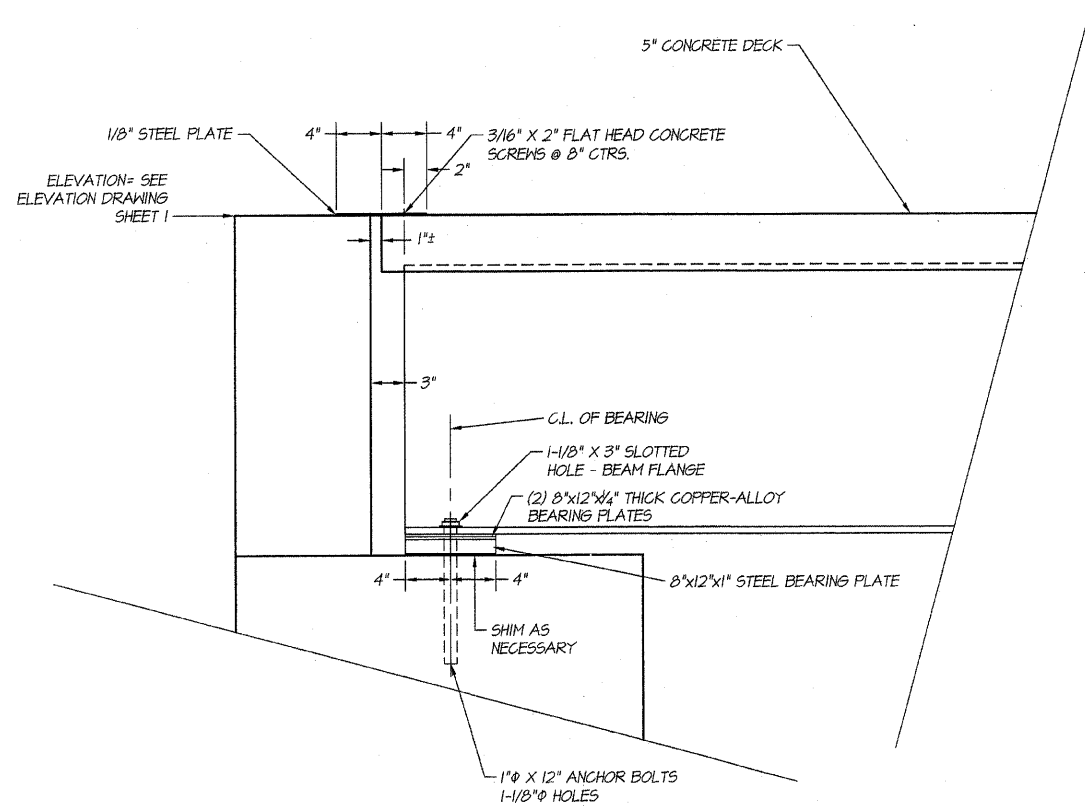
PLAN VIEW - ABUTMENT
SCALE: 1/2" = 1'



ELEVATION - ABUTMENT
SCALE: 1/2" = 1'

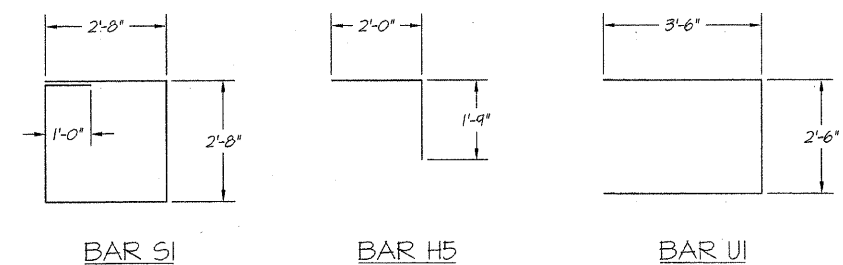


SECTION - ABUTMENT
SCALE: 1/2" = 1'

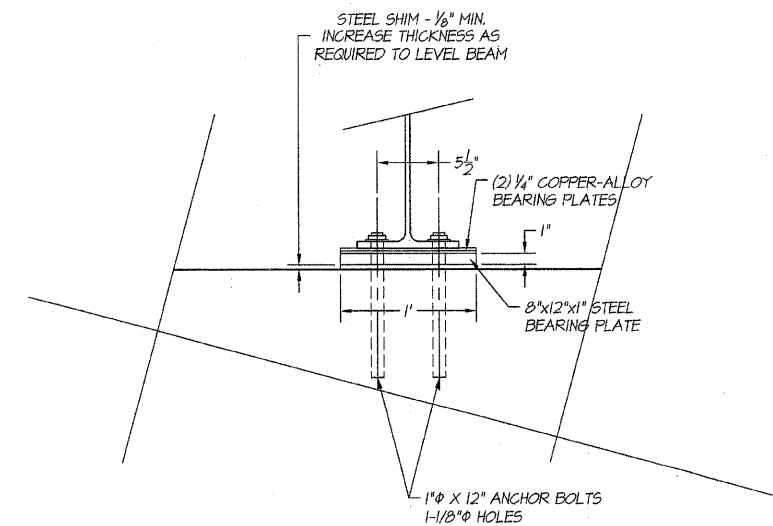


ELEVATION - BEARING DETAIL
SCALE: 1-1/2" = 1'

BILL OF MATERIALS (1 ABUTMENT)				
BAR SIZE	NUMBER	LENGTH	SHAPE	WEIGHT
#4H1	6	11'-9"	---	47
#4H2	24	5'-6"	---	88
#6H3	8	11'-9"	---	141
#6H4	7	1'-6"	---	16
#4H5	24	3'-9"	SEE DETAIL	60
#4S1	11	11'-8"	SEE DETAIL	86
#4U1	10	9'-6"	SEE DETAIL	63
#4V1	24	3'-6"	---	56
#4V2	24	5'-3"	---	84
TOTAL WEIGHT OF REINFORCEMENT = 641 LBS.				
CONCRETE QUANTITY = 8.7 CU. YDS.				
CENTER ST. - 12" CONCRETE PILES = 70 LIN. FT.				
SUMMIT AVE. - 12" CONCRETE PILES = 71 LIN. FT.				



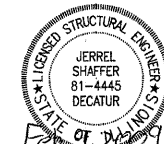
BAR S1 BAR H5 BAR U1



SECTION - BEARING DETAIL
SCALE: 1-1/2" = 1'

I certify that to the best of my knowledge, information and belief, this bridge design is structurally adequate for the design loading shown on the plans. The design is an economical one for the style of structure and complies with requirements for the current "AASHTO Standard Specifications for Highway Bridges."

Jerrel L. Shaffer
JERREL L. SHAFFER
ILLINOIS STRUCTURAL ENGINEER NO. 01-4445



LICENSE EXPIRES: 11/30/2010

BATTENBROCK & ASSOCIATES, INC.
Consulting Engineers
GEB
MILANSKI
100 SOUTH TAYLORVILLE ROAD
DECATUR, ILLINOIS 62521-1015
TEL: 219-403-1015

DESIGNED	SCALE	SOILED	REVISIONS
JLS	As Noted	As Noted	NO. BY DATE
RJZ	April 2004	April 2004	1
XXX	JOB NO. 99099	JOB NO. 99099	2

DECATUR PARK DISTRICT
STEVENS CREEK BIKEWAY - PHASE I
FABRICATED BRIDGE DESIGN
DETAILS

ENGINEERS, INC.
CONSULTING
2000 N. WILSON LUTHER, SUITE 401, DECATUR, ILLINOIS 62521-1015
(217) 403-1015 FAX (217) 877-4415
PROFESSIONAL DESIGN FIRM #18-00101 DEPT. 04/20/2005

SHEET NO.
33
OF
145