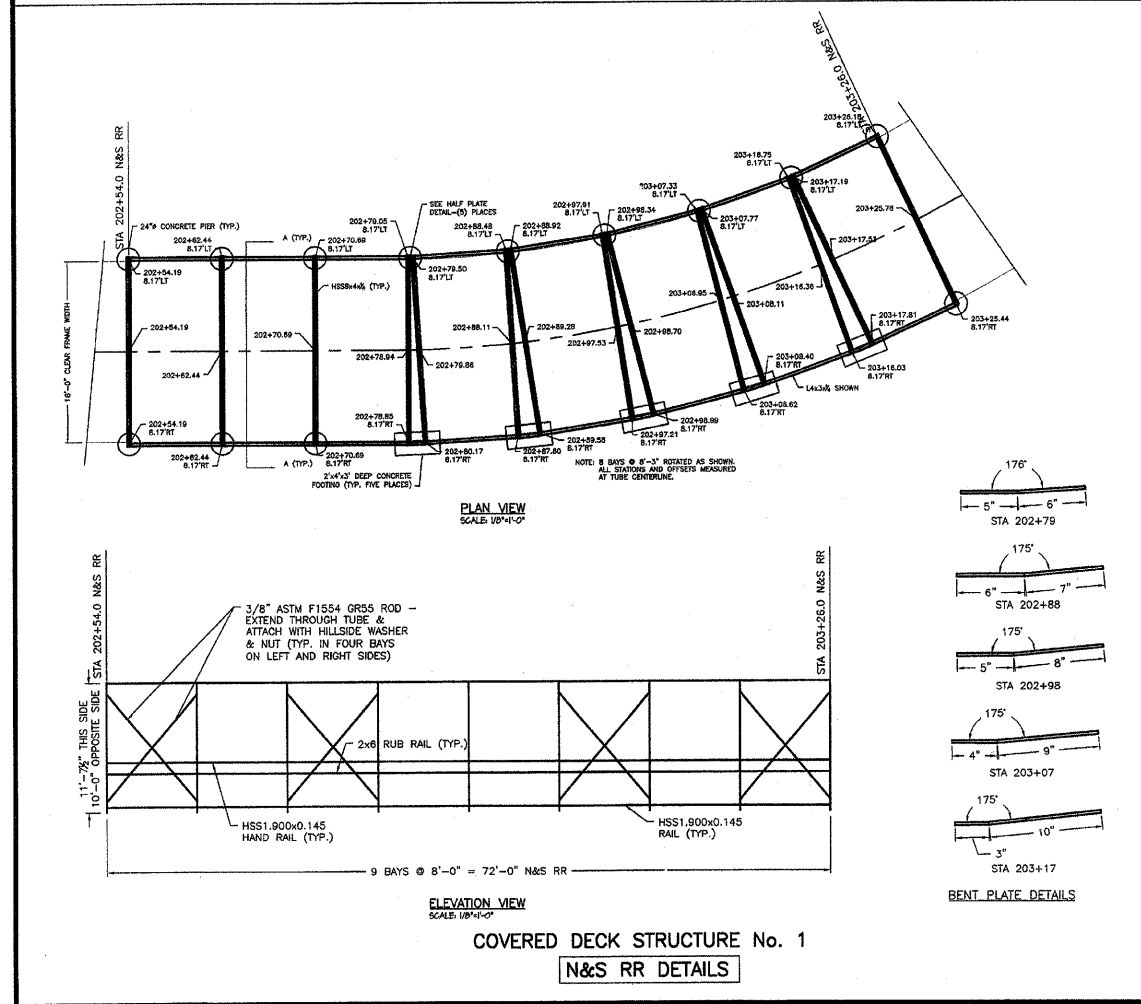
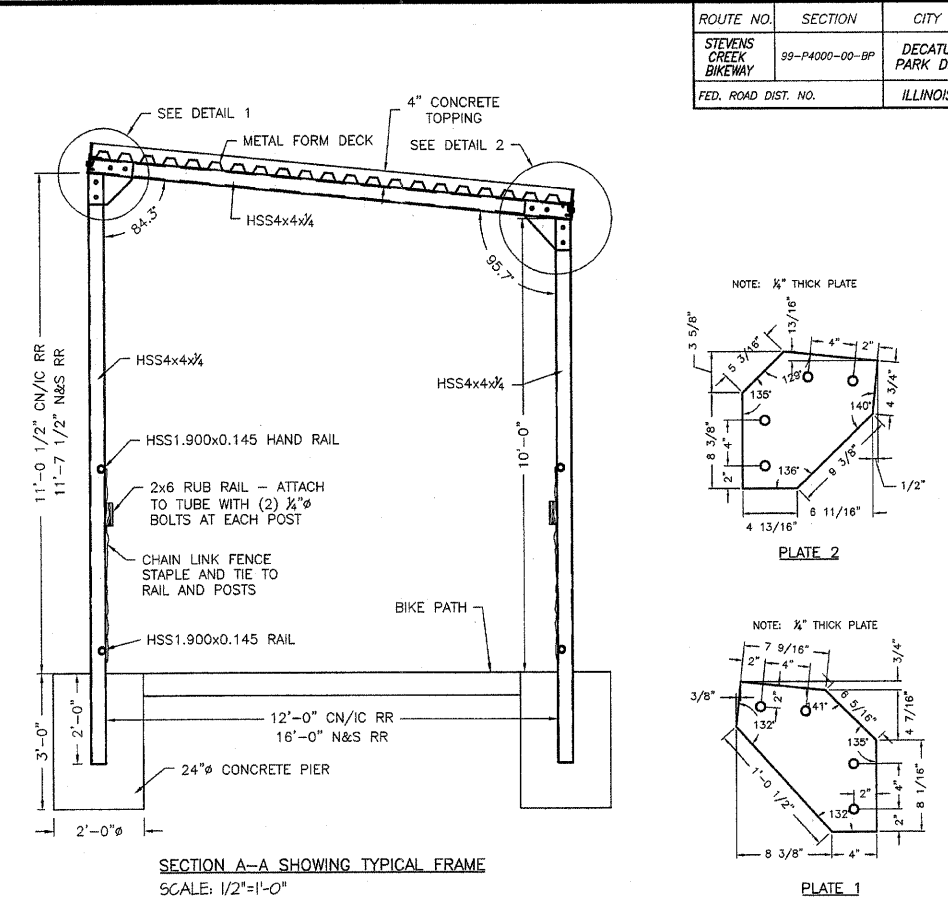
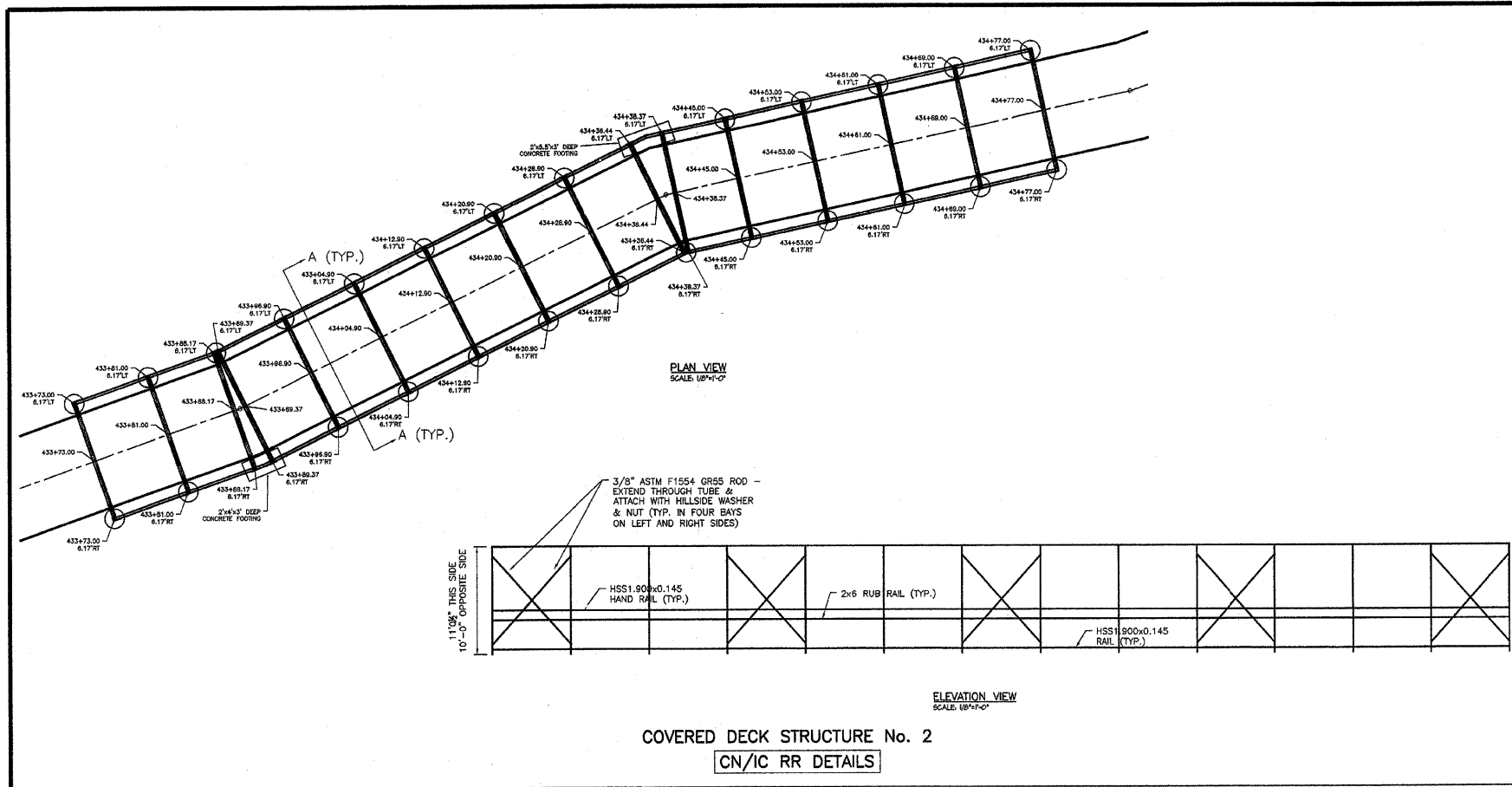
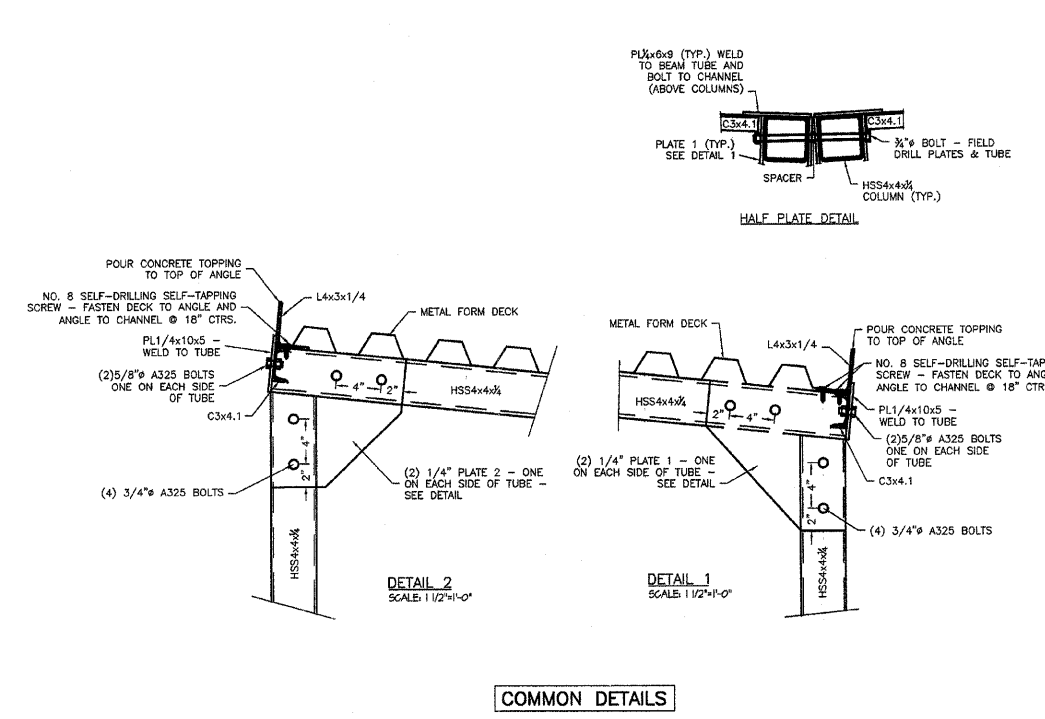


ROUTE NO.	SECTION	CITY	TOTAL SHEETS	SHEET NO.
STEVENS CREEK BIKEWAY	99-P4000-00-BP	DECATUR PARK DIST	145	37
FED. ROAD DIST. NO.		ILLINOIS	PROJECT TE-00D7(27)	



NOTES:
STRUCTURAL STEEL:
 1. ALL DETAILING, FABRICATION, AND ERECTION SHALL CONFORM TO AISC SPECIFICATIONS FOR "DESIGN, FABRICATION, AND ERECTION OF STRUCTURAL STEEL FOR BUILDINGS," AND THE AISC "CODE OF STANDARD PRACTICE FOR STEEL BUILDINGS AND BRIDGES."
 2. WELDING SHALL BE IN ACCORDANCE WITH THE AMERICAN WELDING SOCIETY (AWS D1.1-86).
 3. **MATERIALS:**
 A. STRUCTURAL SHAPES AND PLATES UNLESS NOTED: ASTM A36
 B. HSS (TUBES): ASTM A-500 GRADE B
 C. FIELD BOLTS: ASTM A325, 3/4-INCH DIAMETER UNLESS OTHERWISE NOTED.
 D. ANCHOR BOLTS AND THREADED RODS: ASTM F1554 GRADE 55, SIZES AND EMBEDMENT AS INDICATED ON THE DRAWINGS.
 E. FIELD WELDS: AWS E70xx, LOW HYDROGEN ELECTRODES.
 4. METAL FORM DECK SHALL BE UNITED STEEL DECK, INC. UF2X 24GA FORM DECK.
 5. MINIMUM LENGTH OF METAL FORM DECK SHEETING SHALL BE 24 FEET.
 6. SPOT WELD METAL FORM DECK TO TUBE FRAME AT 18" CTRS.
 7. OVERLAP DECKING AT LEAST FOUR (4) INCHES AT EACH SPLICE.
 8. ALL FASTENERS, STRUCTURAL STEEL AND DECKING SHALL BE GALVANIZED. GALVANIZING SHALL BE DONE IN ACCORDANCE WITH ASTM A123, ASTM A924 OR ASTM A153.
CONCRETE:
 1. CONCRETE SHALL HAVE A MINIMUM STRENGTH OF 3,500 PSI AT 28 DAYS. THE SLUMP OF THE CONCRETE WHEN PLACED SHALL NOT EXCEED 5 INCHES. THE CONCRETE MIXTURE SHALL CONTAIN NOT LESS THAN 5 1/2 BAGS OF CEMENT.
 2. PLACEMENT OF CONCRETE AND REINFORCING STEEL SHALL BE IN ACCORDANCE WITH THE STANDARDS OF THE AMERICAN CONCRETE INSTITUTE.
 3. SCORE CONCRETE SLAB TO A DEPTH OF ONE (1) INCH OVER EACH FRAME. SEAL SCORE CRACK WITH A QUALITY POLYURETHANE JOINT SEALER.



BAINBRIDGE & ASSOCIATES, INC.
 Consulting Engineers
GEB MILANSKI
 100 SOUTH TAYLORVILLE ROAD
 DECATUR, ILLINOIS 62521
 Phone: 314-244-1000

REVISIONS

NO.	BY	DATE
1	JLS	April 2004

SCALE
As Noted

DESIGNED
JLS

DRAWN
M/AS

FIELD BOOK
XCC

JOB NO.
980997

DECATUR PARK DISTRICT
STEVENS CREEK BIKEWAY - PHASE I
COVERED DECK STRUCTURE BENEATH RAIL ROAD
DETAILS

JSE ENGINEERS, INC.
 CONSULTING ENGINEERS
 81-4445
 PROFESSIONAL LICENSE FROM ILL. EXPIRES 12/31/2005

JERREL L. SHAFER
 81-4445
 DECATUR
 ILLINOIS STRUCTURAL ENGINEER NO. 01-4445
 LICENSE EXPIRES: 11/30/2010

SHEET NO. **37** OF **145**