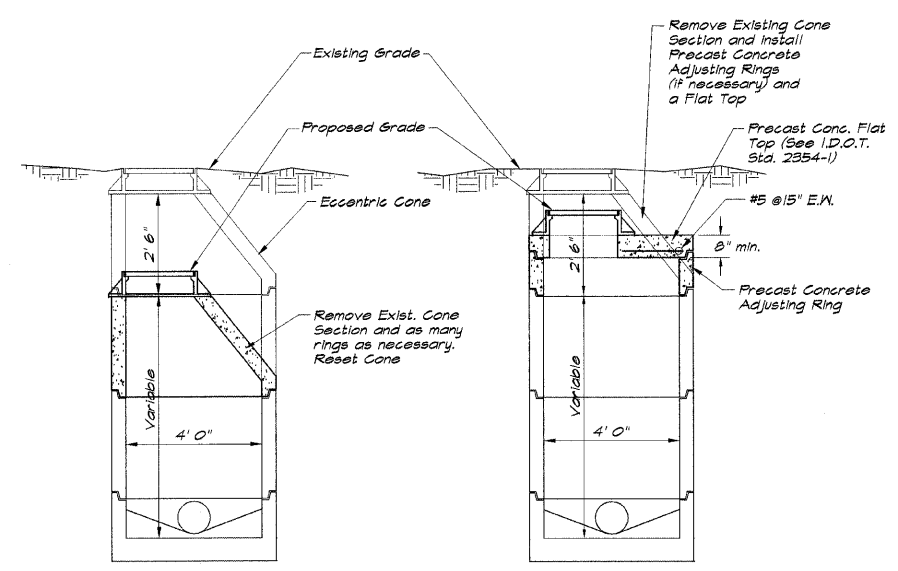


ROUTE NO.	SECTION	CITY	TOTAL SHEETS	SHEET NO.
STEVENS CREEK BIKEWAY	99-P4000-00-BP	DECATUR PARK DIST	145	38
FED. ROAD DIST. NO.	ILLINOIS	PROJECT	TE-0007(27)	

BAINBRIDGE & ASSOCIATES, INC.
 Consulting Engineers
GFB
MILANSKI
 1670 SOUTH PLYMOUTH ROAD
 DECATUR, ILLINOIS 62526
 Phone: (618) 281-1400

REVISIONS	NO.	BY	DATE
DESIGNED	DJW	DATE	May 2002
DRAWN	P ml/s	FIELD BOOK	99099

DECATUR PARK DISTRICT
 STEVENS CREEK BIKEWAY - PHASE I
 STANDARD DETAILS

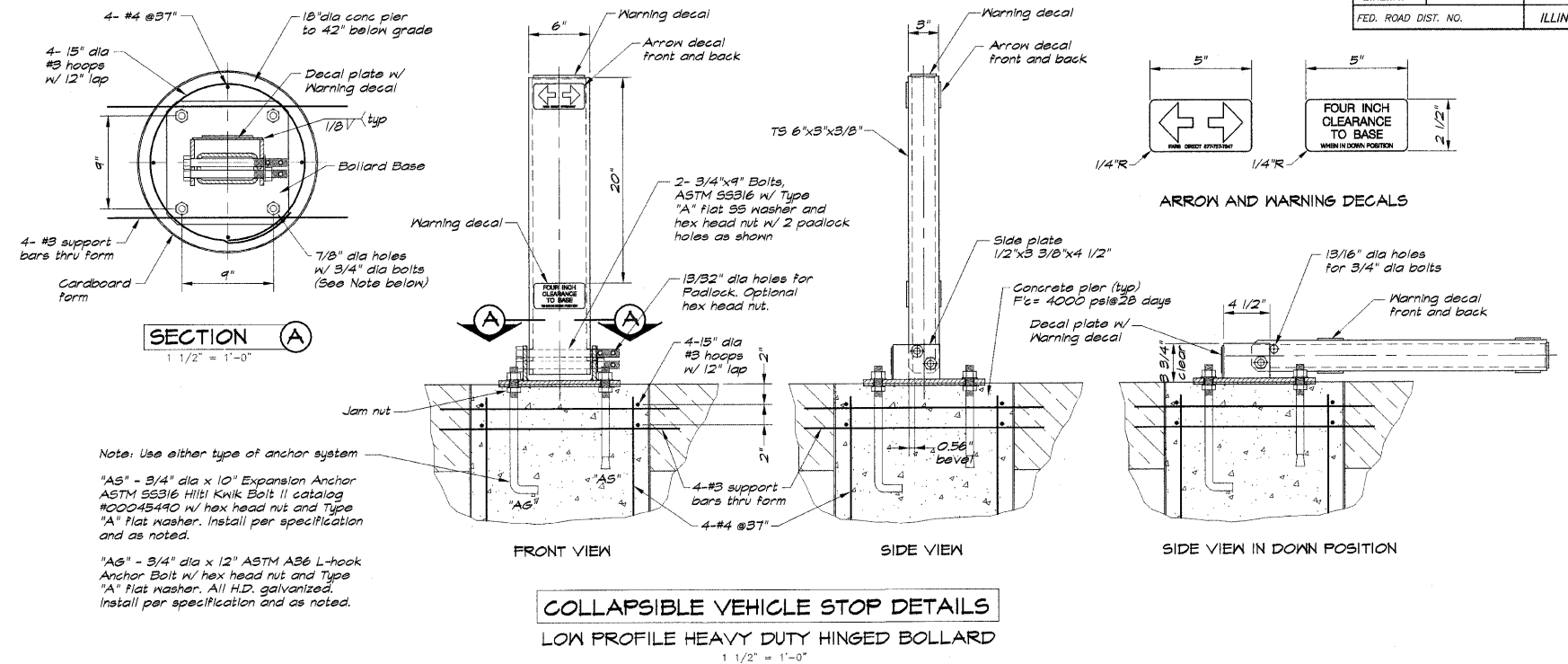


METHOD 'A' **METHOD 'B'**

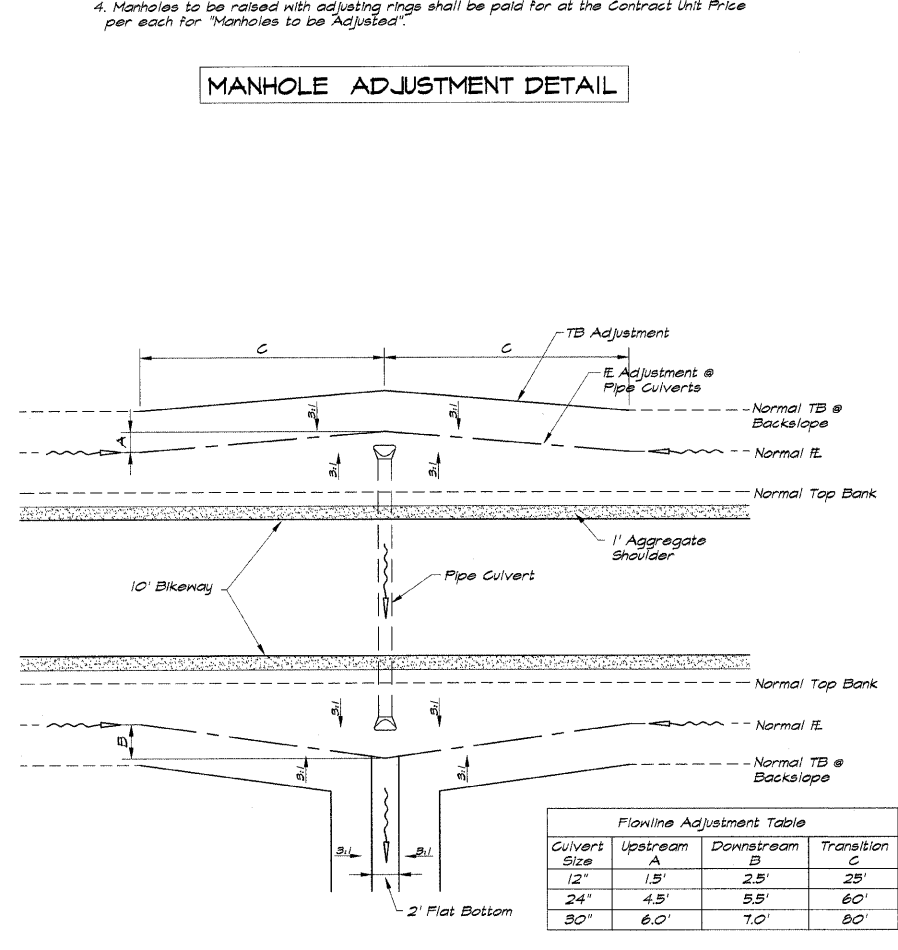
NOTES:

- The contractor has the option of either method A or B for a downward adjustment. Shop Drawings for the Precast Concrete Top shall be submitted to the engineer for his approval prior to the delivery of the Top to the job site. Lowering may also be accomplished by removing existing adjusting rings or brick masonry.
- This work shall be done in accordance with details herein shown and Section 602 of the Standard Specifications.
- This work shall be paid for at the contract unit price each for "Manholes to be Adjusted (Special)" and no additional compensation shall be allowed.
- Manholes to be raised with adjusting rings shall be paid for at the Contract Unit Price per each for "Manholes to be Adjusted".

MANHOLE ADJUSTMENT DETAIL

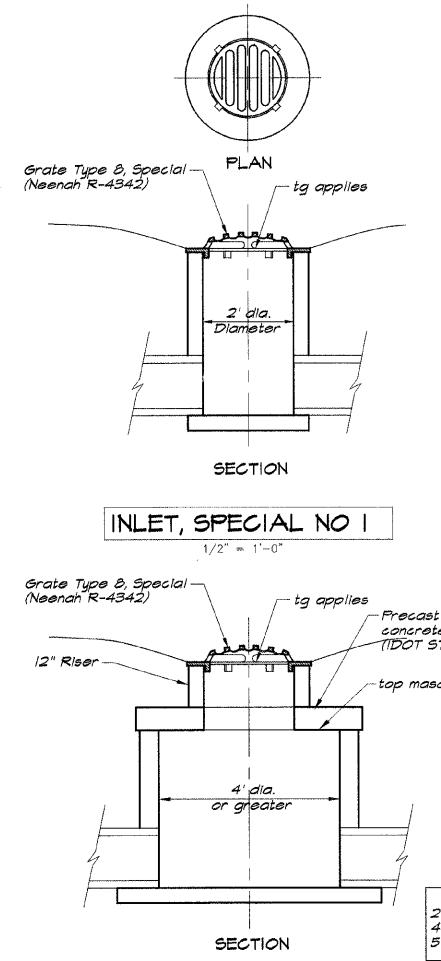


COLLAPSIBLE VEHICLE STOP DETAILS
 LOW PROFILE HEAVY DUTY HINGED BOLLARD



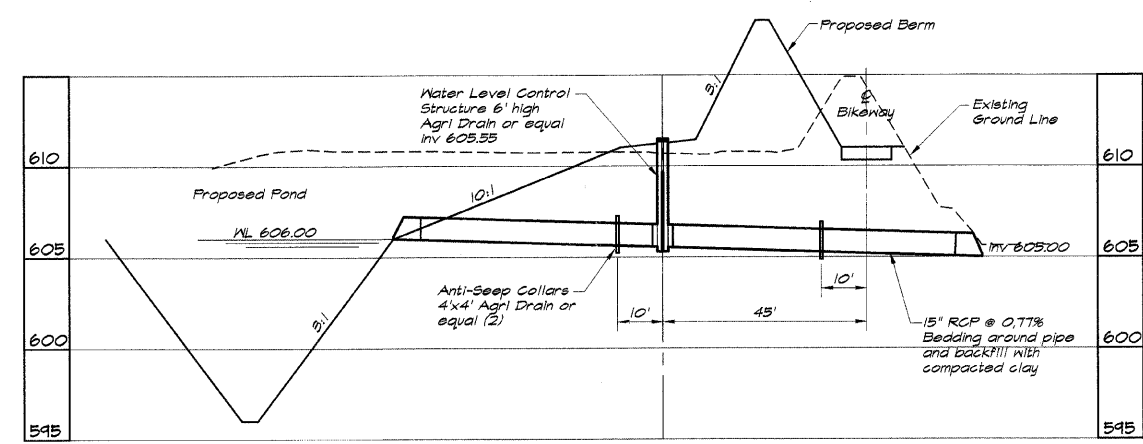
Culvert Size	Upstream A	Downstream B	Transition C
12"	1.5'	2.5'	25'
24"	4.5'	5.5'	60'
30"	6.0'	7.0'	80'

FLOW LINE ADJUSTMENT AT PIPE CULVERTS

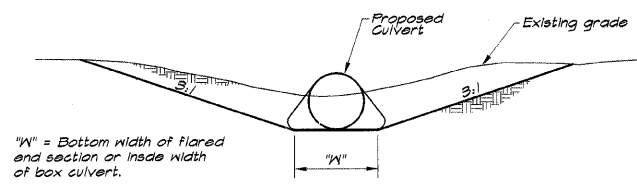


INLET, SPECIAL NO 1
 1/2" = 1'-0"

INLET, SPECIAL NO 2
 1/2" = 1'-0"



WATER LEVEL CONTROL STRUCTURE
 A.R. 407+00
 1" = 20'



Where indicated on the plans and in locations where positive drainage does not exist after the installation of pipe or box culverts, a drainage swale shall be constructed to the nearest natural drainage way. For the Typical Section above and having a minimum TE slope of 0.30%. Required elevation is included in "Earth Excavation".

TYPICAL SWALE TO DRAIN CULVERT