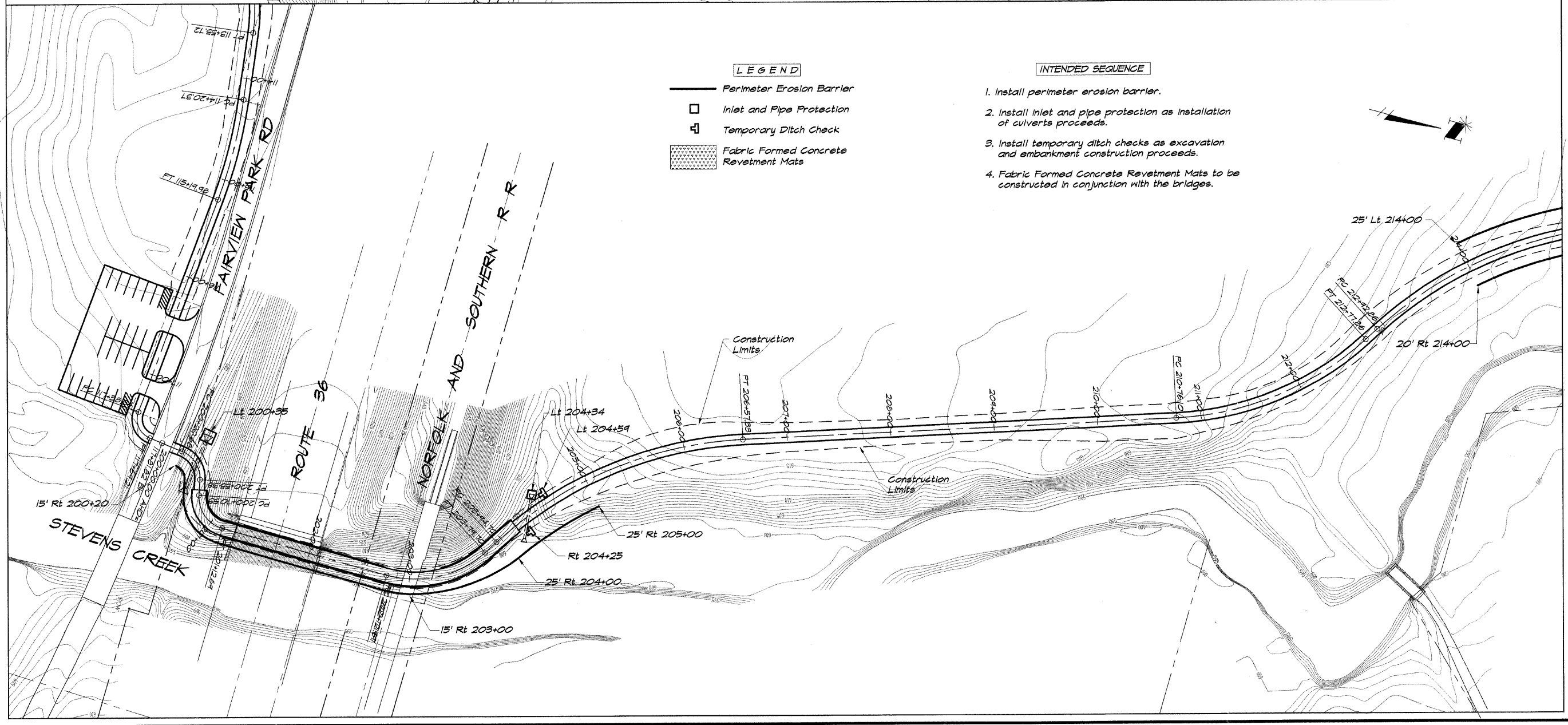
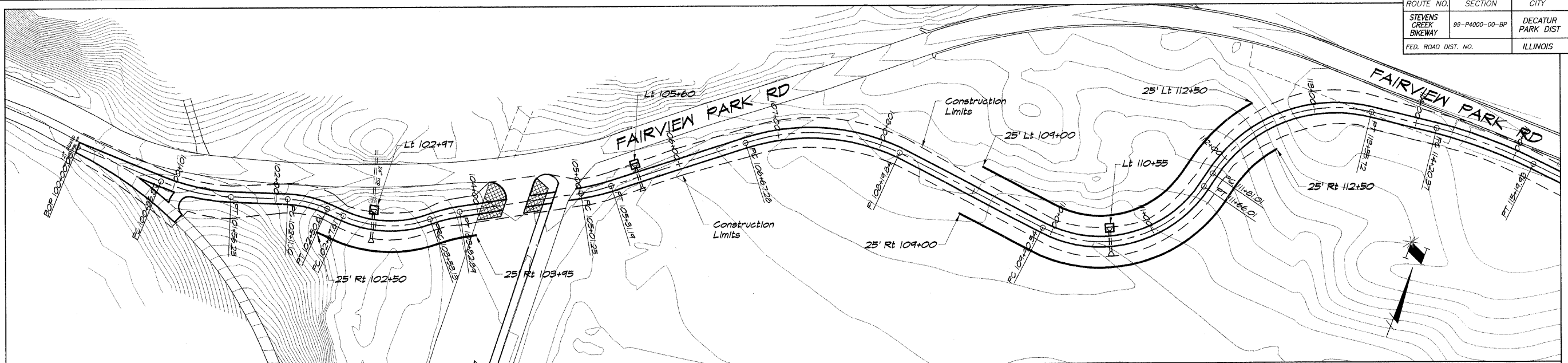


ROUTE NO.	SECTION	CITY	TOTAL SHEETS	SHEET NO.
STEVENS CREEK BIKEWAY	80-P4000-00-BP	DECATUR PARK DIST	145	39
FED. ROAD DIST. NO.	ILLINOIS		PROJECT TE-0007(27)	



**LEGEND**

- Perimeter Erosion Barrier
- Inlet and Pipe Protection
- Temporary Ditch Check
- Fabric Formed Concrete Revetment Mats

**INTENDED SEQUENCE**

1. Install perimeter erosion barrier.
2. Install inlet and pipe protection as installation of culverts proceeds.
3. Install temporary ditch checks as excavation and embankment construction proceeds.
4. Fabric Formed Concrete Revetment Mats to be constructed in conjunction with the bridges.

**BARNBRIDGE & ASSOCIATES, INC.**  
 Consulting Engineers  
**CHIEF MILANSKI**  
 1870 SOUTH TAYLORVILLE ROAD  
 DECATUR, ILLINOIS 62526  
 Phone: 217-285-1400

NO.	BY	DATE

DESIGNED: MHP  
 DRAWN: P mlls  
 FIELD BOOK: XXX  
 SCALE: 1/4" = 50'  
 DATE: May 2002  
 JOB NO.: 99099

**DECATUR PARK DISTRICT**  
 STEVENS CREEK BIKEWAY - PHASE I  
 EROSION CONTROL PLAN