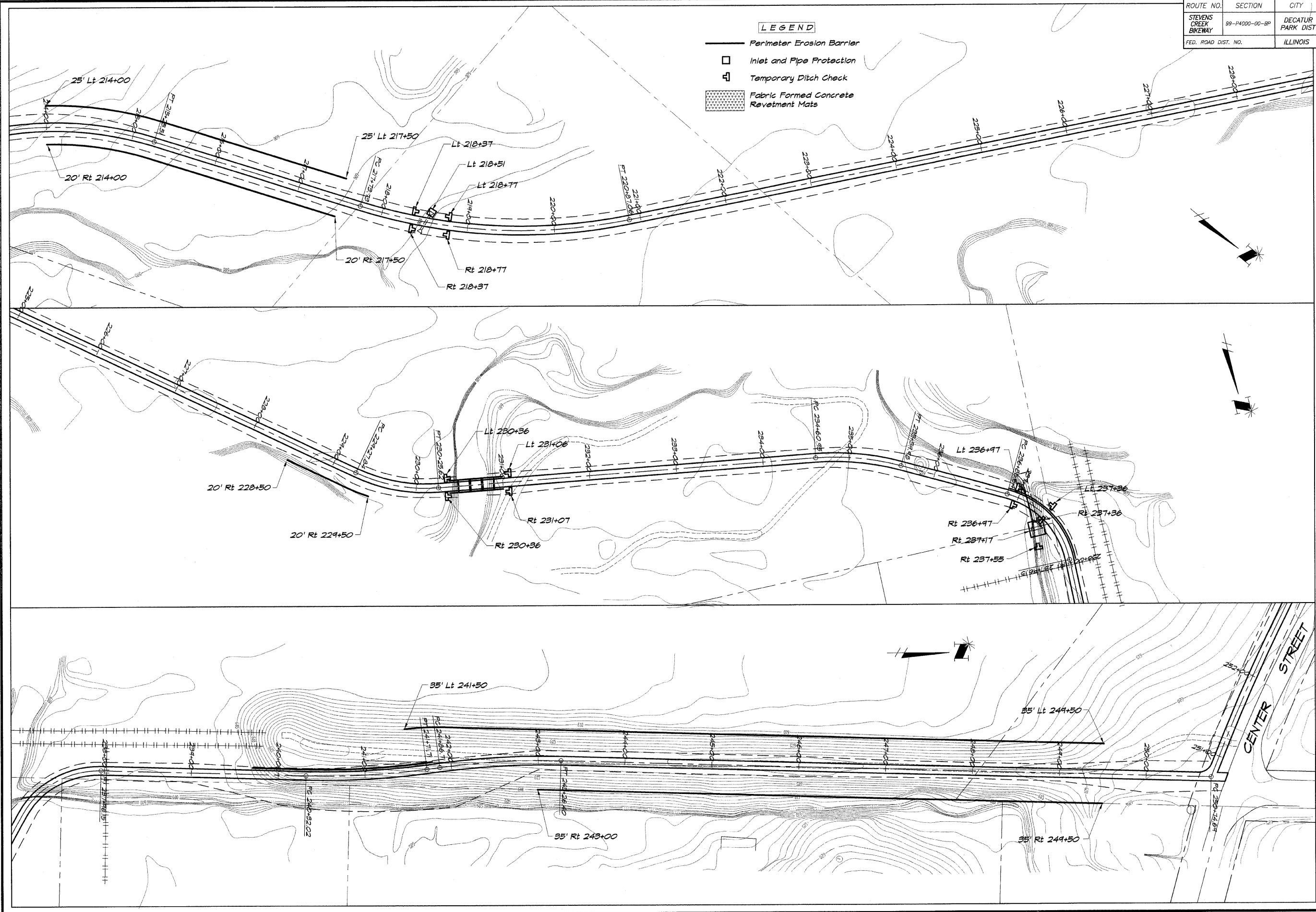


ROUTE NO.	SECTION	CITY	TOTAL SHEETS	SHEET NO.
STEVENS CREEK BIKEWAY	99-P4000-00-BP	DECATUR PARK DIST	145	40
FED. ROAD DIST. NO.	ILLINOIS		PROJECT TE-0007(27)	

LEGEND

- Perimeter Erosion Barrier
- Inlet and Pipe Protection
- Temporary Ditch Check
- Fabric Formed Concrete Revetment Mats



BATNEBRIDOB & ASSOCIATES, INC.
G B B
MILWAUKEE
 1600 SOUTH TAYLORVILLE ROAD
 DECATUR, ILLINOIS 62526
 Professional Engineer
 License No. 184-007285

REVISIONS

NO.	BY	DATE

DESIGNED MHP
DRAWN P. Mills
FIELD BOOK XXXX
SCALE 1" = 50'
DATE May 2002
JOB NO. 95493

DECATUR PARK DISTRICT
 STEVENS CREEK BIKEWAY - PHASE I
 EROSION CONTROL PLAN