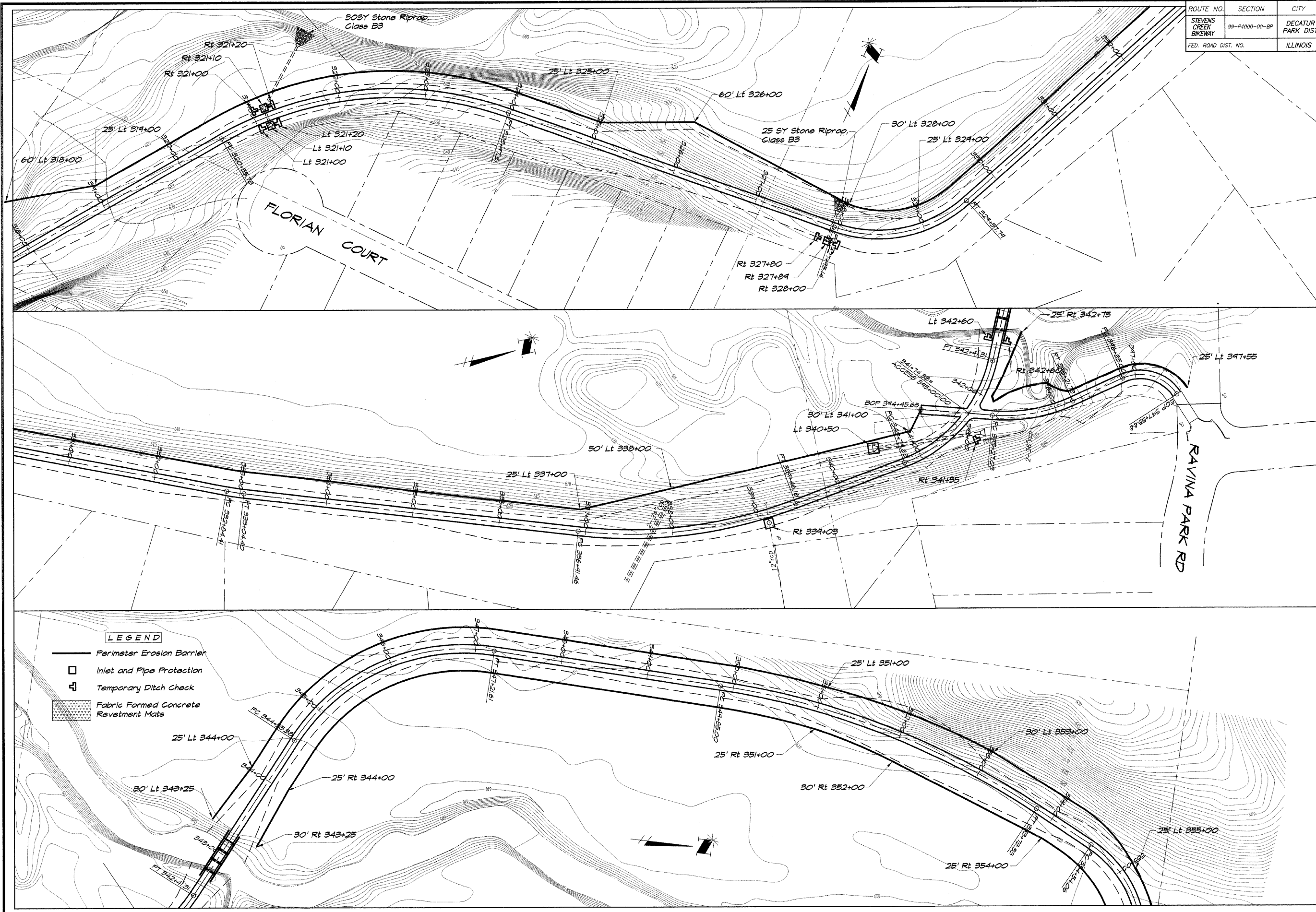


ROUTE NO.	SECTION	CITY	TOTAL SHEETS	SHEET NO.
STEVENS CREEK BIKEWAY	99-P4000-00-BP	DECATUR PARK DIST	145	42
FED. ROAD DIST. NO.	ILLINOIS		PROJECT TE-0007(27)	



BAINBRIDGE G&A ASSOCIATES, INC.
 Consulting Engineers
G&A MILANSKI
 1875 SOUTH WINDYBROOK ROAD
 DECATUR, ILLINOIS 60155

NO.	BY	DATE

DESIGNED	MHP	SCALE	1" = 50'
DRAWN	P Mills	DATE	May 2002
FIELD BOOK	XXX	JOB NO.	99099

DECATUR PARK DISTRICT
 STEVENS CREEK BIKEWAY - PHASE I
 EROSION CONTROL PLAN