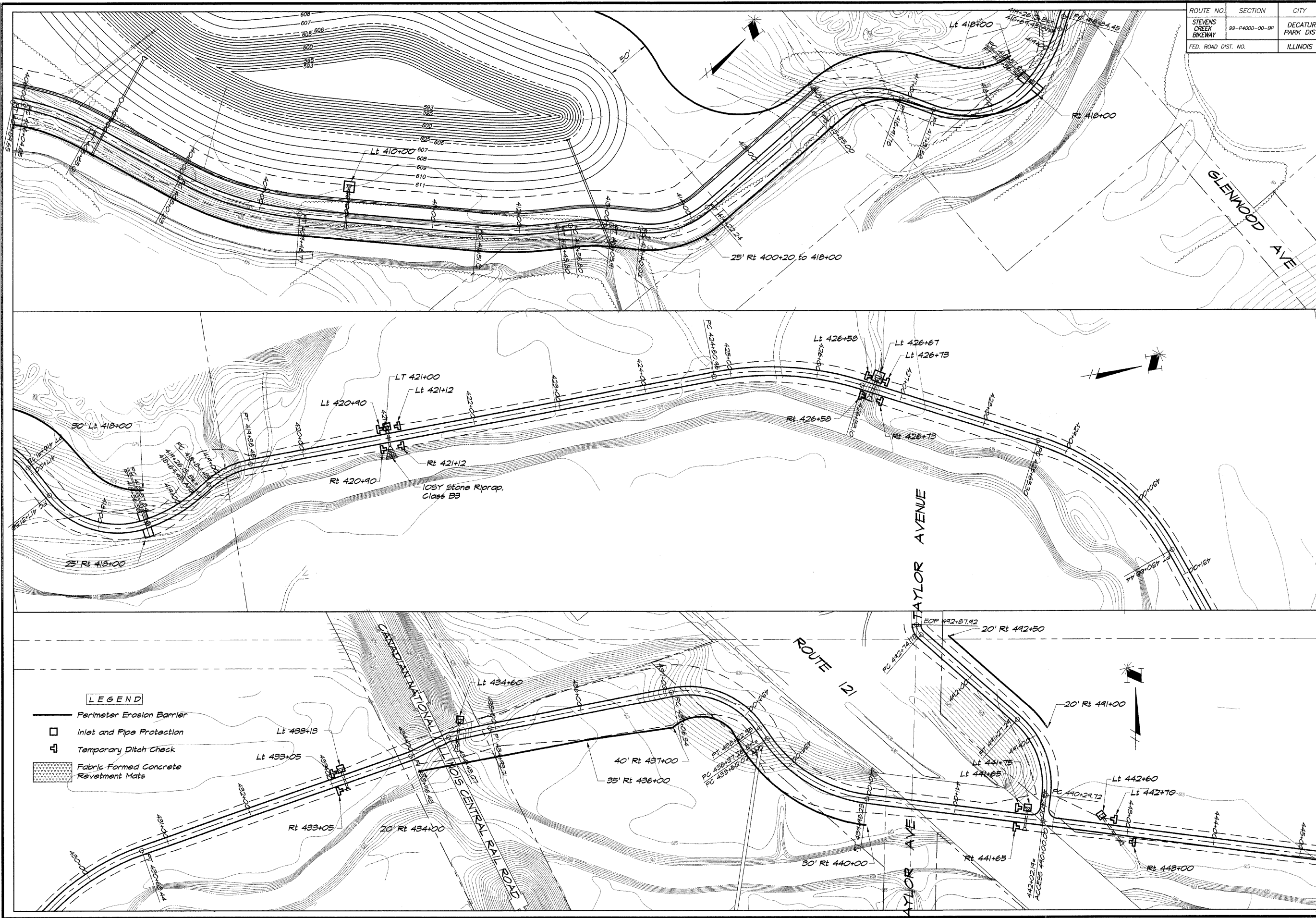


ROUTE NO.	SECTION	CITY	TOTAL SHEETS	SHEET NO.
STEVENS CREEK BIKEWAY	99-P4000-00-BP	DECATUR PARK DIST	145	44
FED. ROAD DIST. NO.	ILLINOIS		PROJECT TE-0007(27)	



BAINBRIDGE & ASSOCIATES, INC.
GFB MILAWSKI
 Consulting Engineers
 1670 SOUTH TAYLORVILLE ROAD
 DECATUR ILLINOIS 62526
 Phone: 217-424-0120

REVISIONS	NO.	BY	DATE

DESIGNED	MMP	SCALE	1" = 50'
DRAWN	P	DATE	May 2002
FIELD BOOK	XXX	JOB NO.	99099

DECATUR PARK DISTRICT
STEVENS CREEK BIKEWAY - PHASE 1
EROSION CONTROL PLAN

44 of 145 - Stevens Creek Bikeway - Phase 1 - Erosion Control Plan - May 2002